



## Economic Bulletin

# KC Fed LMCI Implies the Labor Market Is Closer to a Full Recovery than the Unemployment Rate Alone Suggests

by: Andrew Glover, José Mustre-del-Río and Emily Pollard

October 19, 2021

By consolidating information from a broad range of labor market variables, the Kansas City Fed Labor Market Conditions Indicators (LMCI) provide a consistent gauge of labor market tightness. Adjusting the unemployment rate to incorporate information from the LMCI suggests the labor market is closer to a full recovery than the unemployment rate alone implies.

---

Assessing the tightness of the labor market during the ongoing COVID-19 pandemic has been challenging: some measures (such as wage growth) suggest a tight labor market, while others (such as the labor force participation rate) suggest slack remains.

The Kansas City Fed's Labor Market Conditions Indicators (LMCI) can resolve this tension by consolidating information from 24 labor market variables into two indicators: the level of activity, which reflects the current state of the labor market, and momentum, which reflects the trajectory of the labor market and future conditions.<sup>[1]</sup> Chart 1 shows that the level-of-activity indicator from the LMCI can be a useful proxy for traditional measures of labor market tightness: as the job finding rate (vertical axis) increases, so, too, does the level of activity (horizontal axis).

Chart 1 also shows that the relationship between the level of activity and the job finding rate has been stable over time. For example, comparing the blue, green, and orange dots suggests the relationship between the level of activity and job finding rate was very similar in the 1990s, early 2000s, and the decade following the Great Recession. This stability is remarkable given the substantial changes in the economy over these three decades. Although this relationship broke down somewhat in the early part of the pandemic (yellow dots), it appears to have returned more recently.

Given the consistency of the level-of-activity indicator in gauging labor market tightness, the LMCI may also provide useful information about the unemployment rate, a key measure of labor market health that depends on labor market tightness. Chart 2 shows that adjusting the unemployment rate using the LMCI's level-of-activity and momentum indicators provides a more robust measure of the tightness of the labor market.<sup>[2]</sup> Historically, the official unemployment rate (blue line) and the

LMCI-implied unemployment rate (green line) have tracked each other. However, the LMCI-implied unemployment rate has deviated from the official rate in a few notable ways. For example, prior to both the 2001 recession and the Great Recession of 2007–09, the LMCI-implied unemployment rate began to rise before the official rate, suggesting the former is a timelier indicator of downturns in the labor market. Additionally, following the Great Recession, the LMCI-implied unemployment rate remained above the official rate for several years. This divergence coincides with a period when the labor force participation rate was declining, and many observers noted the unemployment rate was artificially depressed by the lack of participation. By incorporating information from the labor force participation rate and other measures, the LMCI-implied unemployment rate was able to capture this additional slack.

More recently, the LMCI-implied unemployment rate suggests the labor market has improved more than what the official rate suggests. Indeed, while the official unemployment rate currently stands at 4.8 percent, the LMCI-implied unemployment rate is 4.1 percent. However, as the two measures can differ in levels for extended periods of time, comparing relative changes is more useful. In December 2020, the official unemployment rate stood at 6.7 percent, 3.2 percentage points above its pre-pandemic level of 3.5 percent. Thus, based on official estimates, the unemployment rate has closed just under 60 percent of its gap relative to its pre-pandemic level. In contrast, over the same time horizon, the LMCI-implied unemployment rate has closed 91 percent of its gap relative to its pre-pandemic level (3.8 percent). Overall, the LMCI-implied unemployment rate hints at greater improvement in the labor market since December 2020.

By summarizing a wide range of labor market measures, the LMCI can provide a consistent gauge of labor market tightness that accounts for other labor market dynamics not directly captured by the official unemployment rate. Adjusting the unemployment rate to incorporate information from the LMCI yields a more robust and timelier indicator of labor market tightness. In addition, the LMCI-implied unemployment rate has shown greater improvement than the official rate since December 2020, implying that the labor market may be closer to pre-pandemic levels than would be judged by the official unemployment rate alone.

## Endnotes

- [1] Additional details on the Labor Market Conditions Indicators can be found at <https://www.kansascityfed.org/data-and-trends/labor-market-conditions-indicators/>
- [2] More formally, we run a linear regression of the unemployment rate against the level of activity, momentum, and the interaction between activity and momentum. For similar calculations, see Hakkio and Willis (2014) or Gilchrist and Hobijn (2021).

## Authors



### Andrew Glover

#### Research and Policy Advisor

Andrew Glover is a research and policy advisor in the economic research department at the Federal Reserve Bank of Kansas City. His research studies labor and credit markets from a macroeconomic perspective. Prior to joining the Federal Reserve of Kansas City, Mr. Glover was an assistant professor of economics at the University of Texas at Austin. He earned his PhD from the University of Minnesota in 2011.



### José Mustre-del-Río

#### Research and Policy Officer

José Mustre-del-Río is a Research and Policy Officer at the Federal Reserve Bank of Kansas City. He joined the Economic Research Department in August 2011. Prior to joining the department, José received B.S. degrees in economics and applied mathematics from Ohio State University, and M.A. and Ph.D. degrees in economics from the University of Rochester. José's main areas of research are in macroeconomics, labor economics and computational economics.

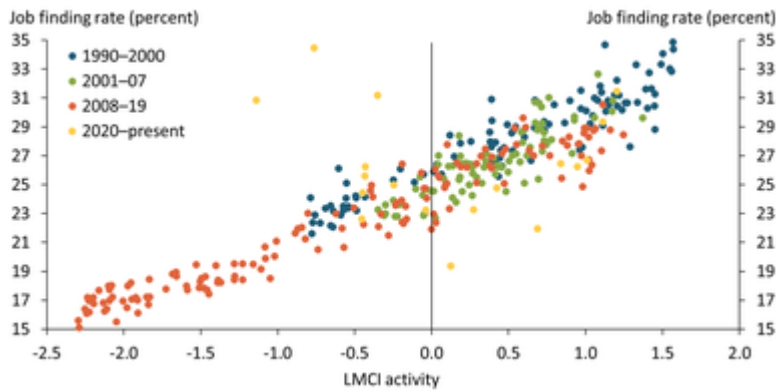


### Emily Pollard

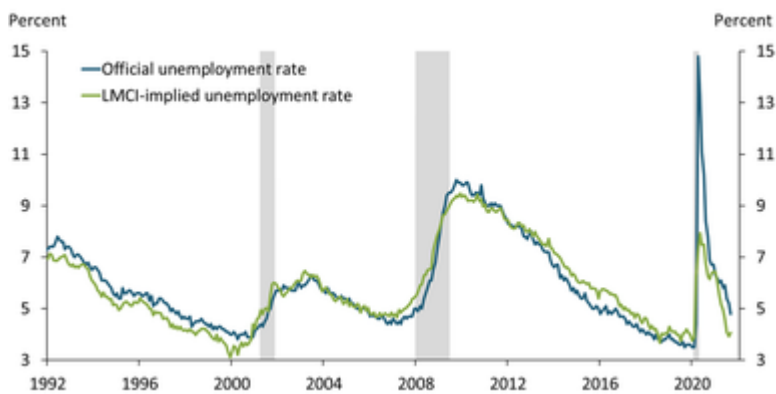
#### Associate Economist

After I graduated from Carleton College in 2016 with a BA in mathematics and economics, I was excited to join the research team at the Federal Reserve Bank of Kansas City. During my time as an RA, I supported [José Mustre-del-Río](#), [Andy Glover](#), [Brent Bundick](#), and [Lee Smith](#). Currently, my main role is to help support the monetary policy briefing process. I also run the Kansas City Fed's Labor Market Conditions Indicators (LMCI) model and collaborate with economists on Bank publications. I really appreciate the variety of work I've gotten to do at the bank and the flexibility given to RAs to explore their interests.

# Media



**Chart 1: Higher Monthly Readings of the Level-of-Activity Indicator Are Systematically Associated with a Higher Job Finding Rate**  
 Sources: Bureau of Labor Statistics (BLS), Federal Reserve Bank of Kansas City's Labor Market Conditions Indicators (LMCI), and authors' calculations.



**Chart 2: The LMCI-Implied Unemployment Rate Signals Greater Improvement in the Labor Market following the Pandemic**  
 Note: Gray shaded areas represent National Bureau of Economic Research (NBER)-defined recessions. Sources: BLS, Federal Reserve Bank of Kansas City's LMCI, NBER, and authors' calculations.

*KC Fed LMCI Implies the Labor Market Is Closer to a Full Recovery than the Unemployment Rate Alone Suggests*  
<https://www.kansascityfed.org/research/economic-bulletin/kc-fed-lmci-implies-the-labor-market-is-closer-to-a-full-recovery-than-the-unemployment-rate-alone-suggests/>