

Hybrid Working, Commuting Time, and the Coming Long-Term Boom in Home Construction

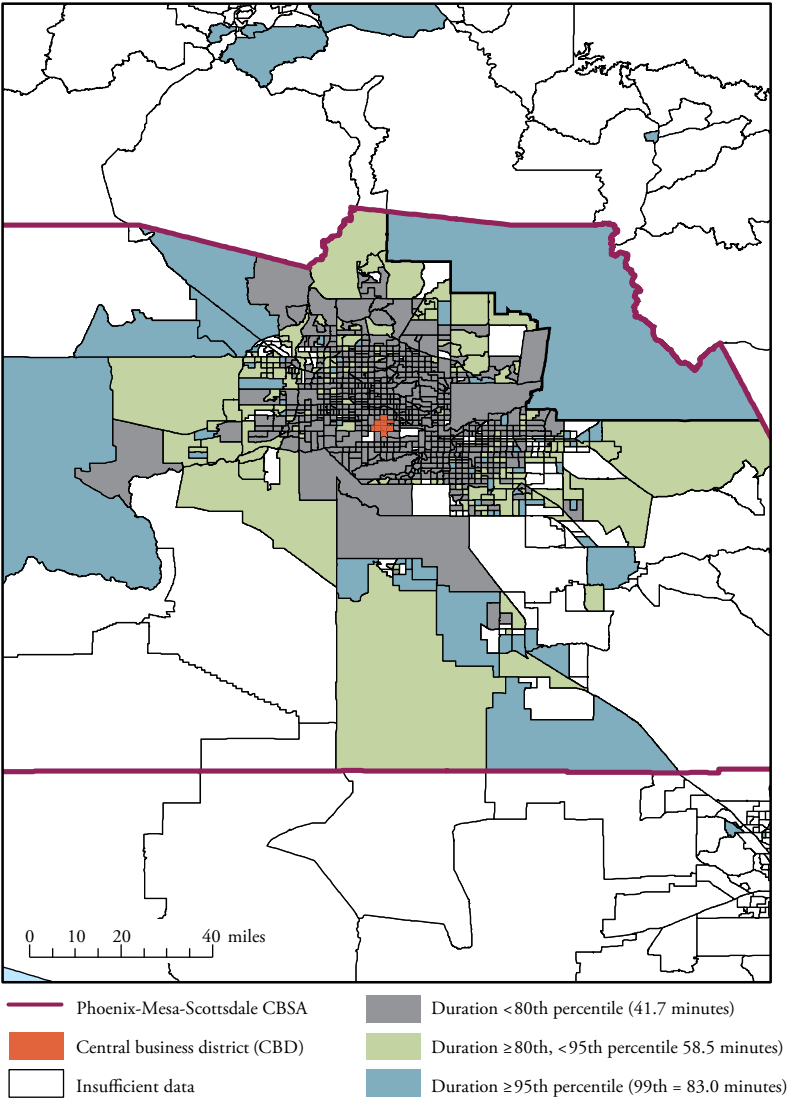
By Jordan Rappaport

Maps, Supplement B:
Largest Metropolitan Areas in the United States (continued)

Metropolitan areas are in descending order of population size in 2020.

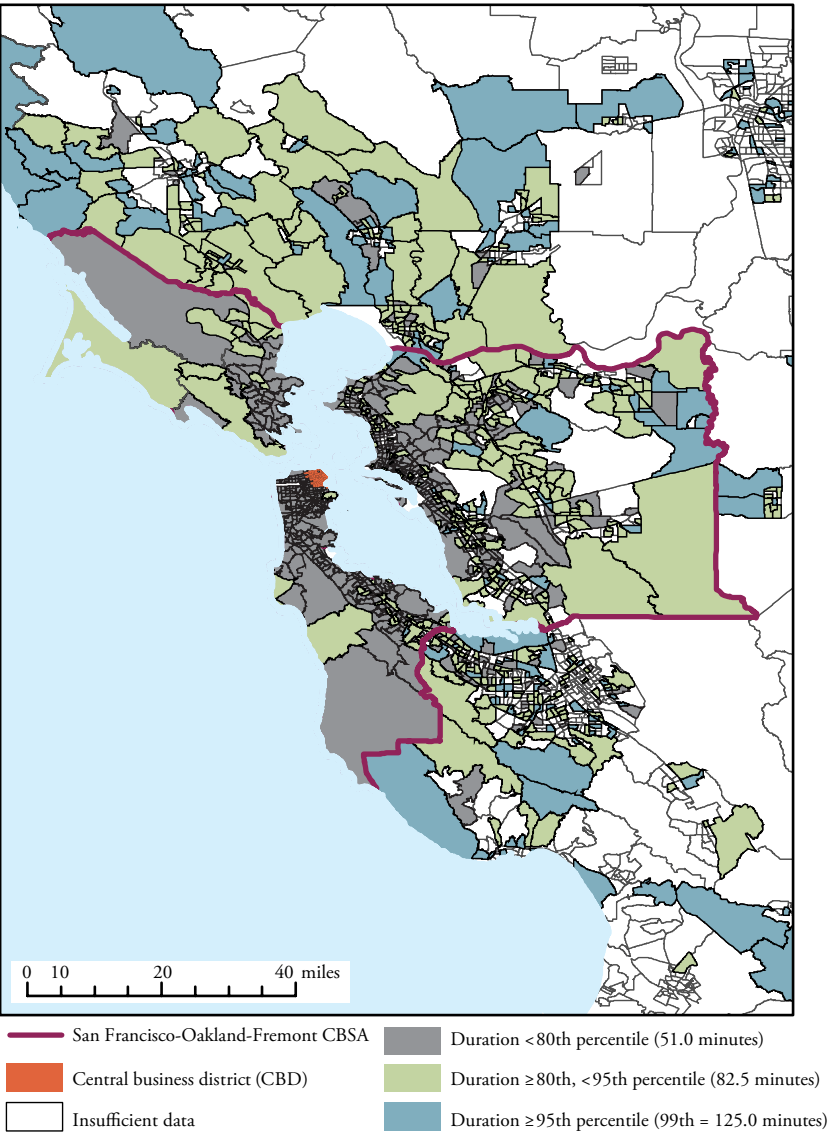
Phoenix-Mesa-Scottsdale, AZ	11
San Francisco-Oakland-Hayward, CA	12
Riverside-San Bernardino-Ontario, CA	13
Detroit-Warren-Dearborn, MI	14
Seattle-Tacoma-Bellevue, WA	15
Minneapolis-St. Paul-Bloomington, MN-WI	16
San Diego-Carlsbad, CA	17
Tampa-St. Petersburg-Clearwater, FL	18
Denver-Aurora-Lakewood, CO	19
Baltimore-Columbia-Towson, MD	20

Commuting Time to Central Business District:
Phoenix-Mesa-Scottsdale



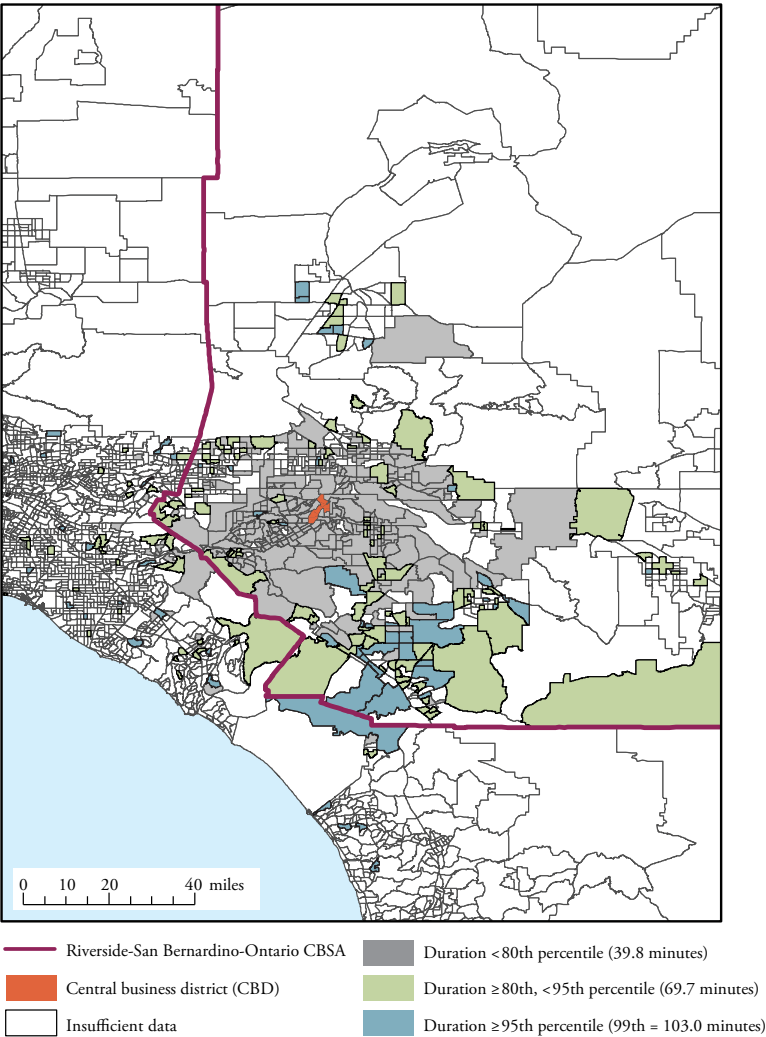
Notes: Map shows percentile commuting times during 2012–16 of workers driving to the CBD of the Phoenix metropolitan area. Census tracts with large land area have low population density.
Sources: U.S. Census Bureau and author's calculations.

Commuting Time to Central Business District:
San Francisco-Oakland-Fremont



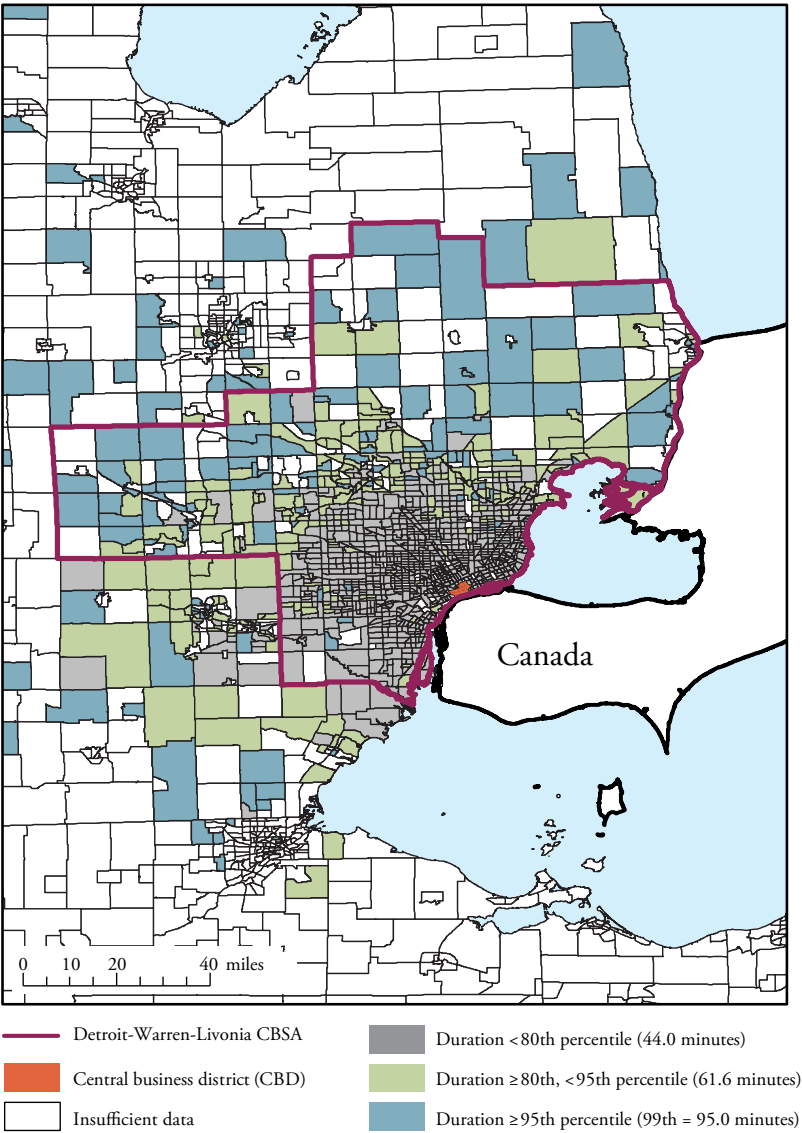
Notes: Map shows percentile commuting times during 2012–16 of workers driving to the CBD of the San Francisco metropolitan area. Census tracts with large land area have low population density.
Sources: U.S. Census Bureau and author's calculations.

Commuting Time to Central Business District:
Riverside-San Bernardino-Ontario



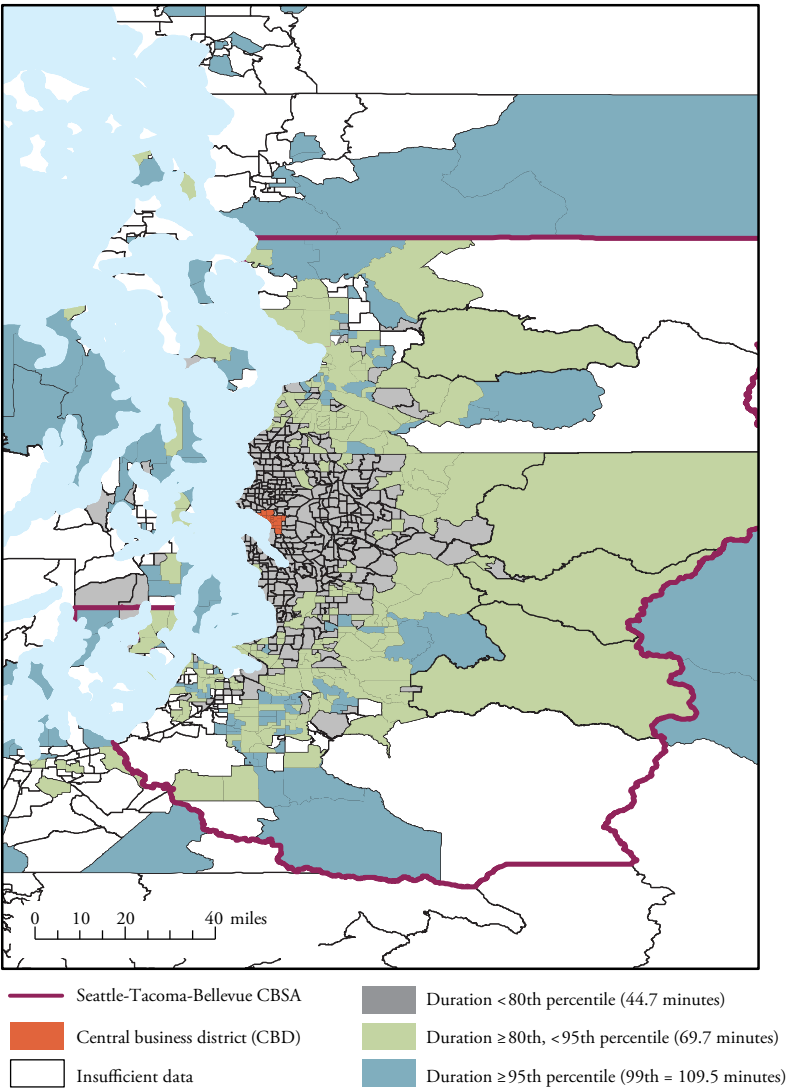
Notes: Map shows percentile commuting times during 2012–16 of workers driving to the CBD of the Riverside metropolitan area. Census tracts with large land area have low population density.
Sources: U.S. Census Bureau and author's calculations.

Commuting Time to Central Business District:
Detroit-Warren-Livonia



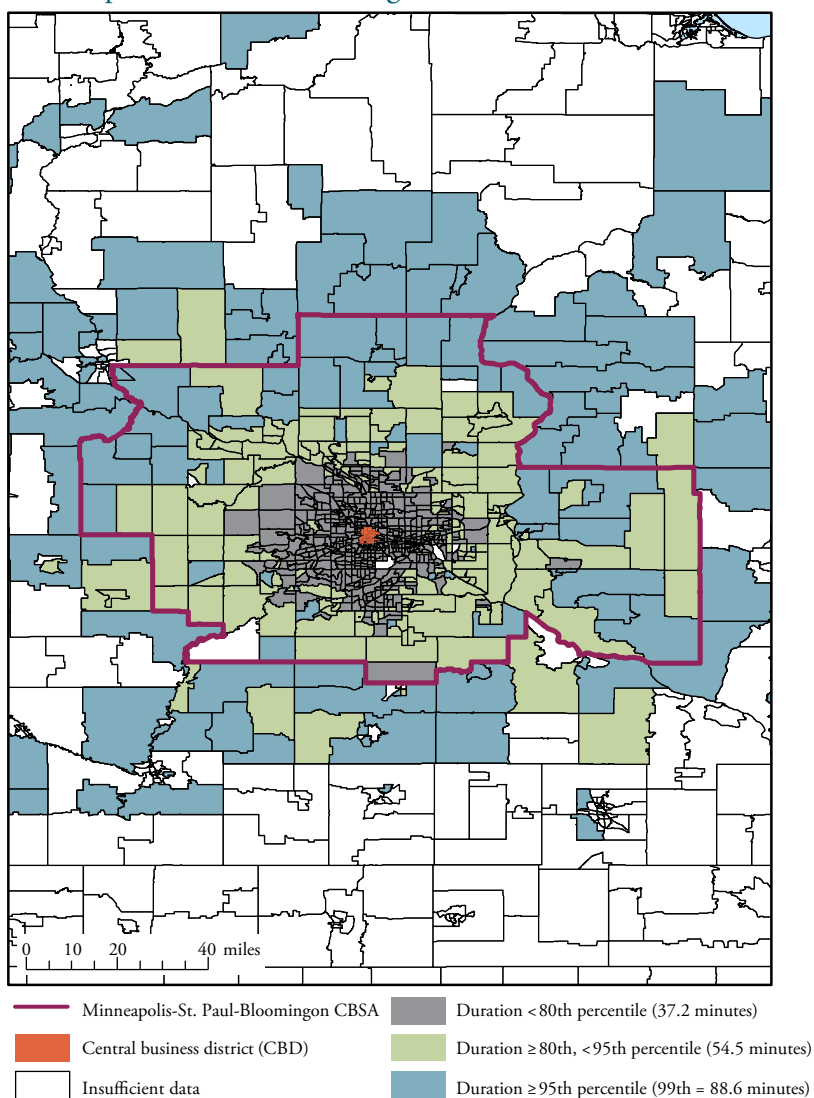
Notes: Map shows percentile commuting times during 2012–16 of workers driving to the CBD of the Detroit metropolitan area. Census tracts with large land area have low population density.
Sources: U.S. Census Bureau and author's calculations.

Commuting Time to Central Business District:
Seattle-Tacoma-Bellevue



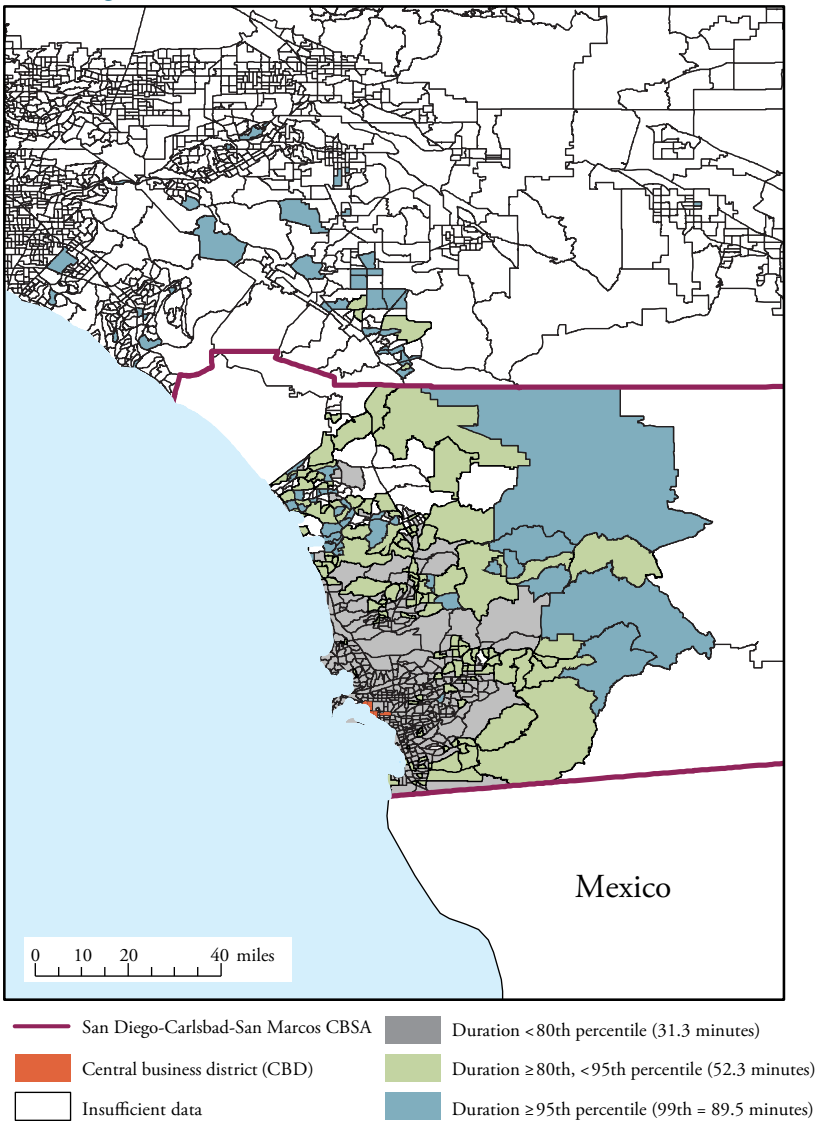
Notes: Map shows percentile commuting times during 2012–16 of workers driving to the CBD of the Seattle metropolitan area. Census tracts with large land area have low population density.
Sources: U.S. Census Bureau and author's calculations.

Commuting Time to Central Business District: Minneapolis-St. Paul-Bloomington



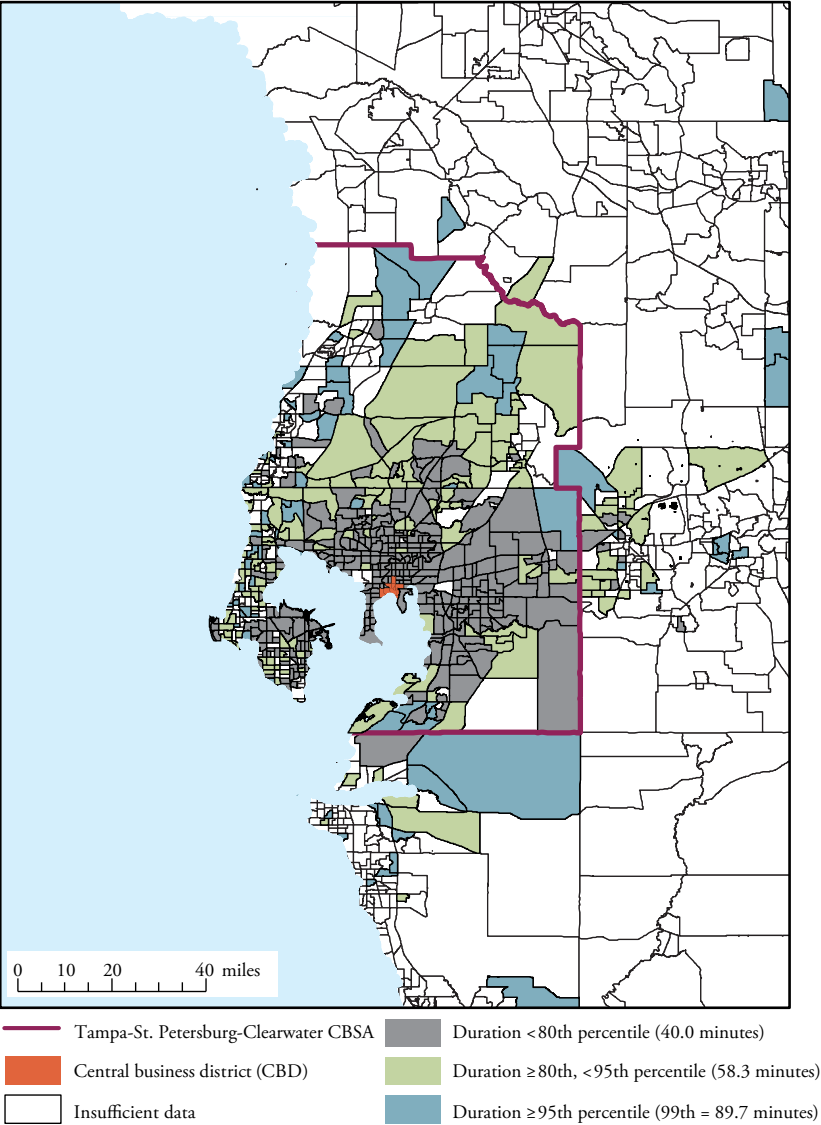
Notes: Map shows percentile commuting times during 2012–16 of workers driving to the CBD of the Minneapolis metropolitan area. Census tracts with large land area have low population density.
Sources: U.S. Census Bureau and author's calculations.

Commuting Time to Central Business District:
San Diego-Carlsbad-San Marcos



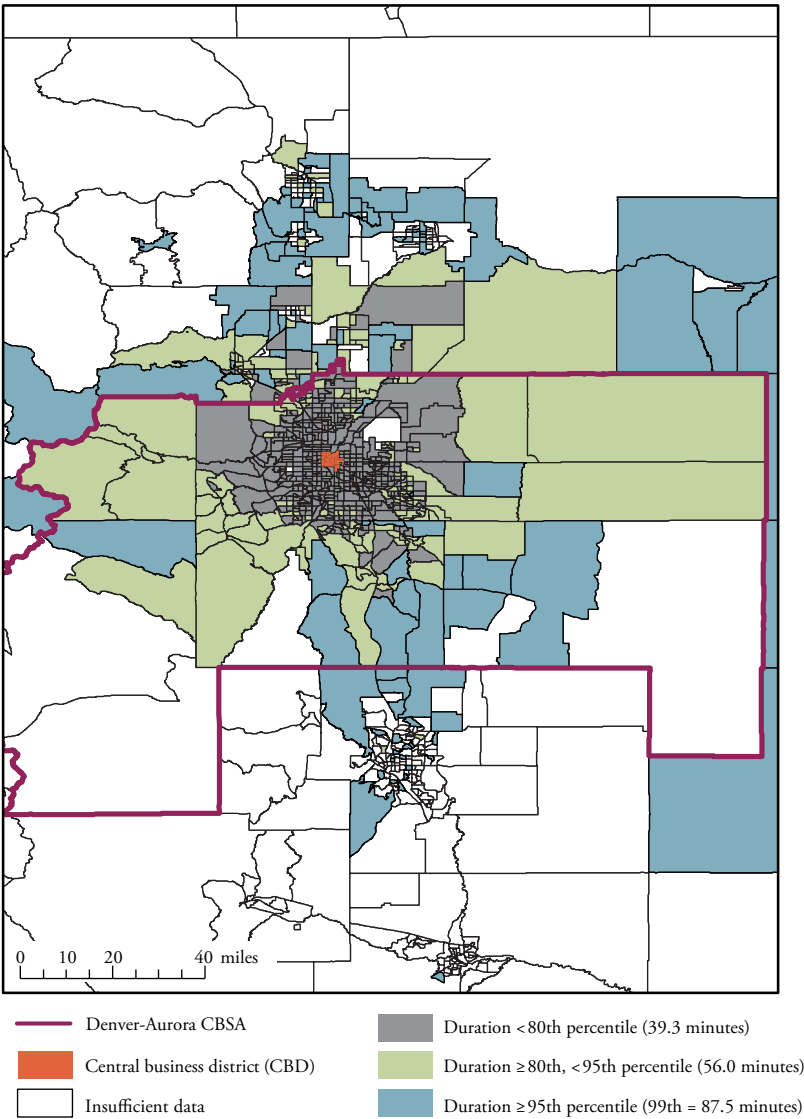
Notes: Map shows percentile commuting times during 2012–16 of workers driving to the CBD of the San Diego metropolitan area. Census tracts with large land area have low population density.
Sources: U.S. Census Bureau and author's calculations.

Commuting Time to Central Business District:
Tampa-St. Petersburg-Clearwater



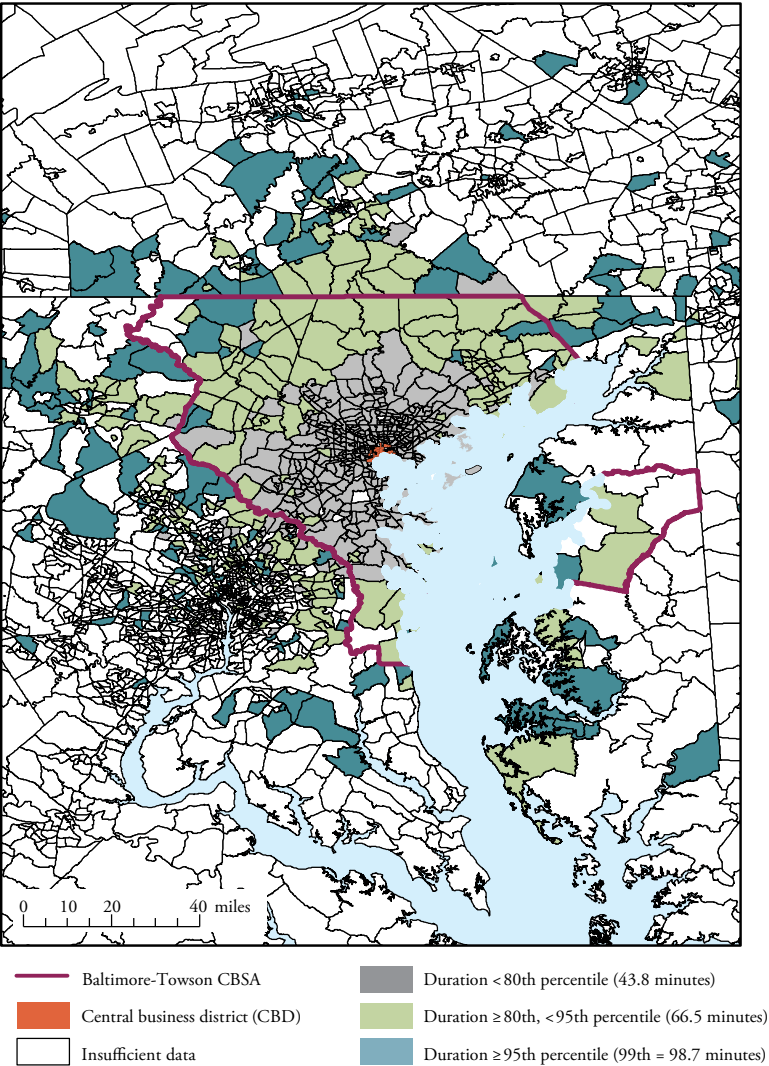
Notes: Map shows percentile commuting times during 2012–16 of workers driving to the CBD of the Tampa metropolitan area. Census tracts with large land area have low population density.
Sources: U.S. Census Bureau and author's calculations.

Commuting Time to Central Business District: Denver-Aurora



Notes: Map shows percentile commuting times during 2012–16 of workers driving to the CBD of the Denver metropolitan area. Census tracts with large land area have low population density.
Sources: U.S. Census Bureau and author's calculations.

Commuting Time to Central Business District: Baltimore-Towson



Notes: Map shows percentile commuting times during 2012–16 of workers driving to the CBD of the Baltimore metropolitan area. Census tracts with large land area have low population density.
Sources: U.S. Census Bureau and author's calculations.