

Hybrid Working, Commuting Time, and the Coming Long-Term Boom in Home Construction

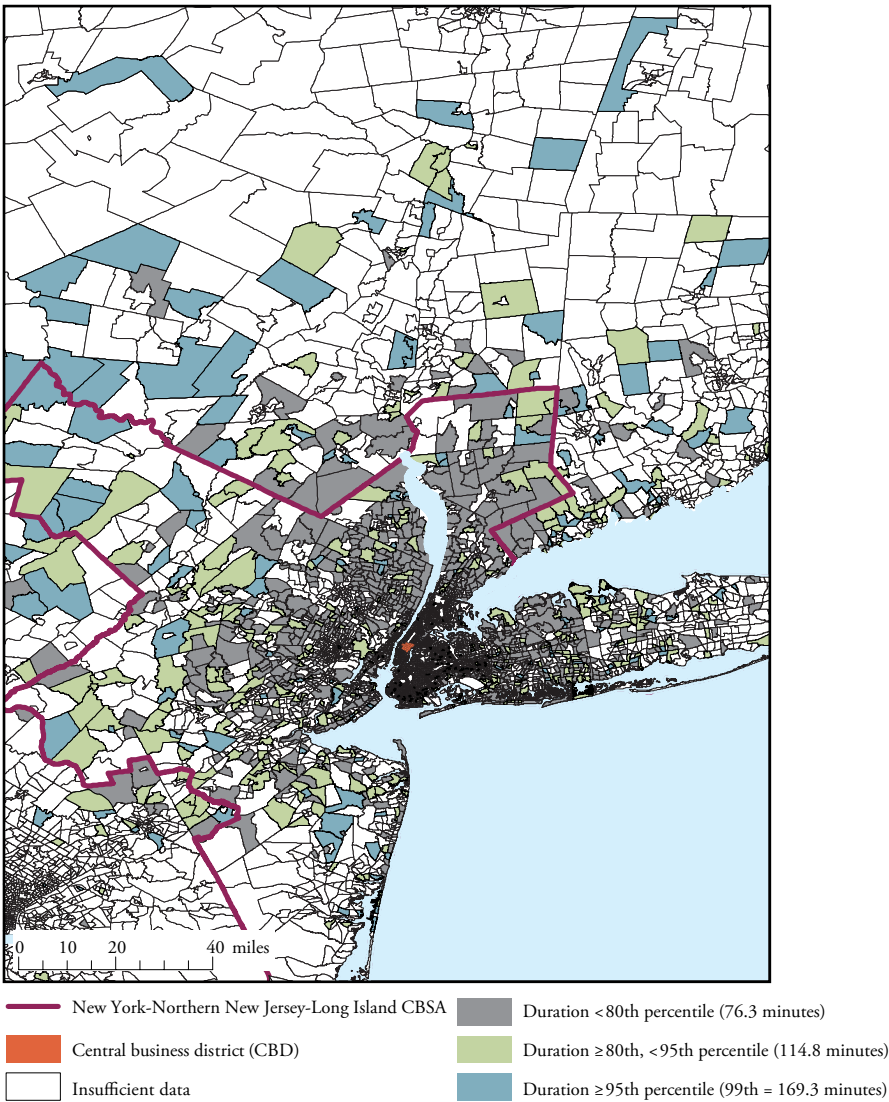
By Jordan Rappaport

**Maps, Supplement A:
Largest Metropolitan Areas in the United States**

Metropolitan areas are in descending order of population size in 2020.

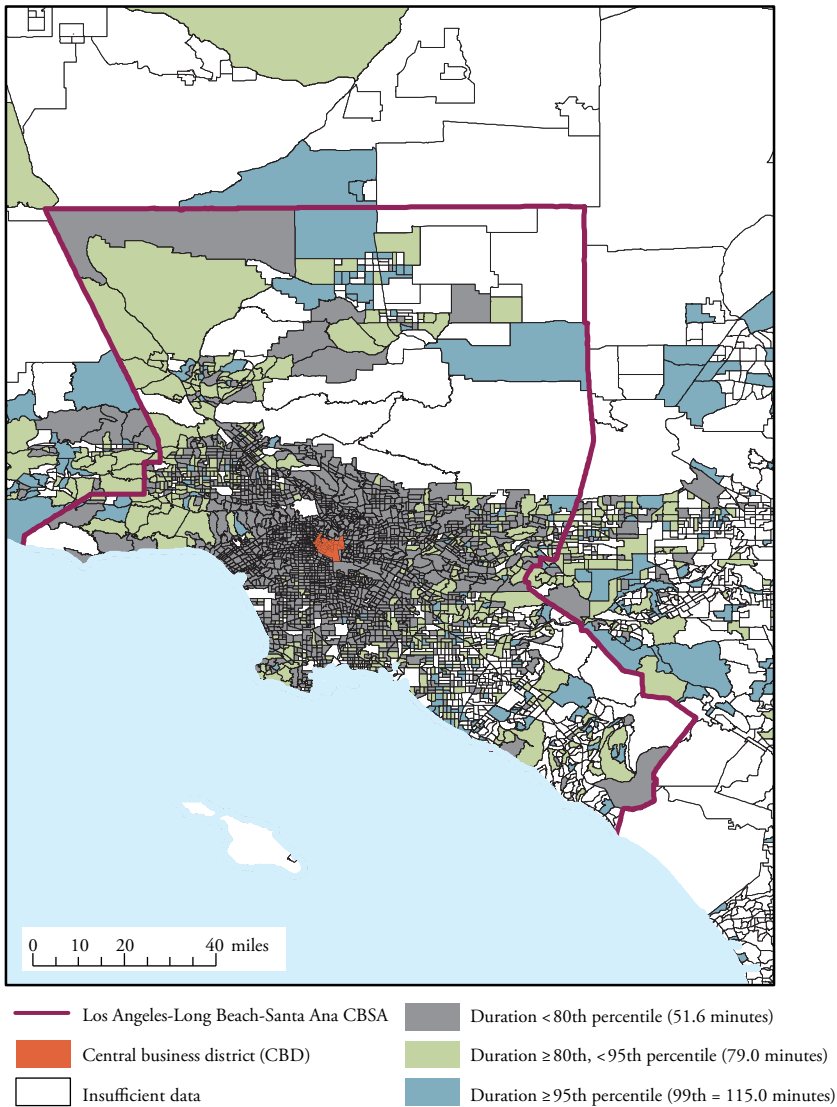
New York-Newark-Jersey City, NY-NJ-PA	1
Los Angeles-Long Beach-Anaheim, CA	2
Chicago-Naperville-Elgin, IL-IN-WI	3
Dallas-Fort Worth-Arlington, TX	4
Houston-The Woodlands-Sugar Land, TX	5
Washington-Arlington-Alexandria, DC-VA-MD-WV	6
Philadelphia-Camden-Wilmington, PA-NJ-DE-MD	7
Miami-Fort Lauderdale-West Palm Beach, FL	8
Atlanta-Sandy Springs-Roswell, GA	9
Boston-Cambridge-Newton, MA-NH	10

Commuting Time to Central Business District:
New York-Northern New Jersey-Long Island



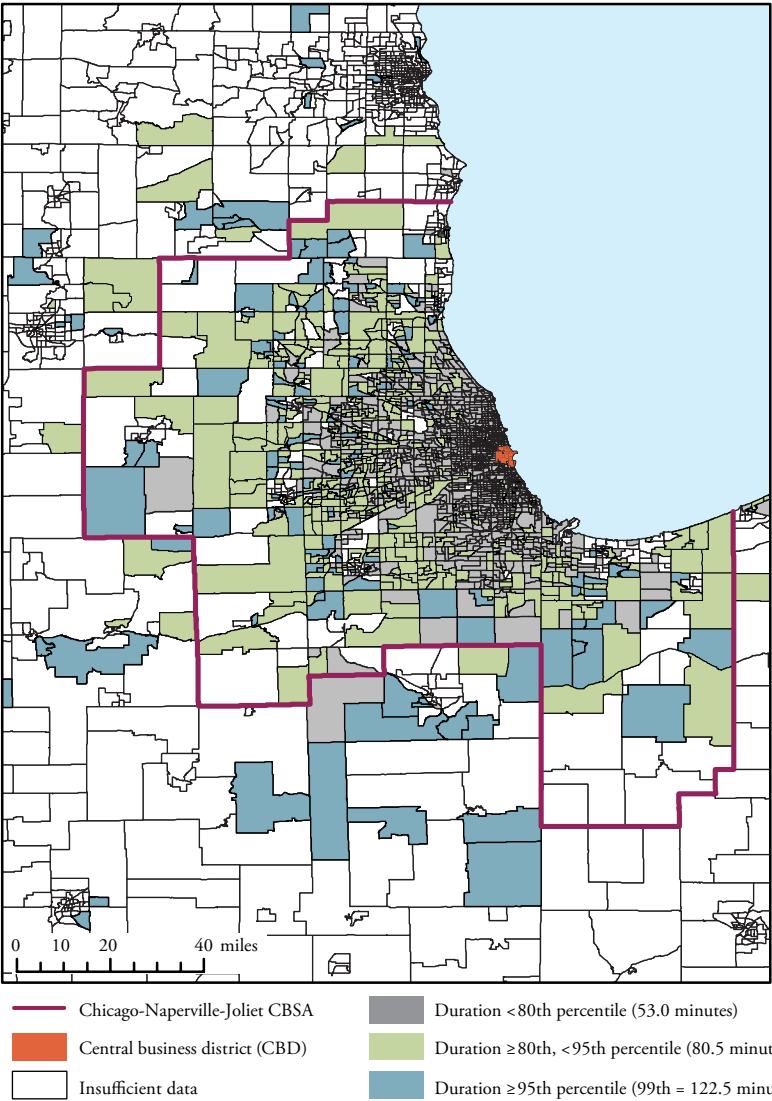
Notes: Map shows percentile commuting times during 2012–16 of workers driving to the CBD of the New York metropolitan area. Census tracts with large land area have low population density.
Sources: U.S. Census Bureau and author's calculations.

Commuting Time to Central Business District:
Los Angeles-Long Beach-Santa Ana



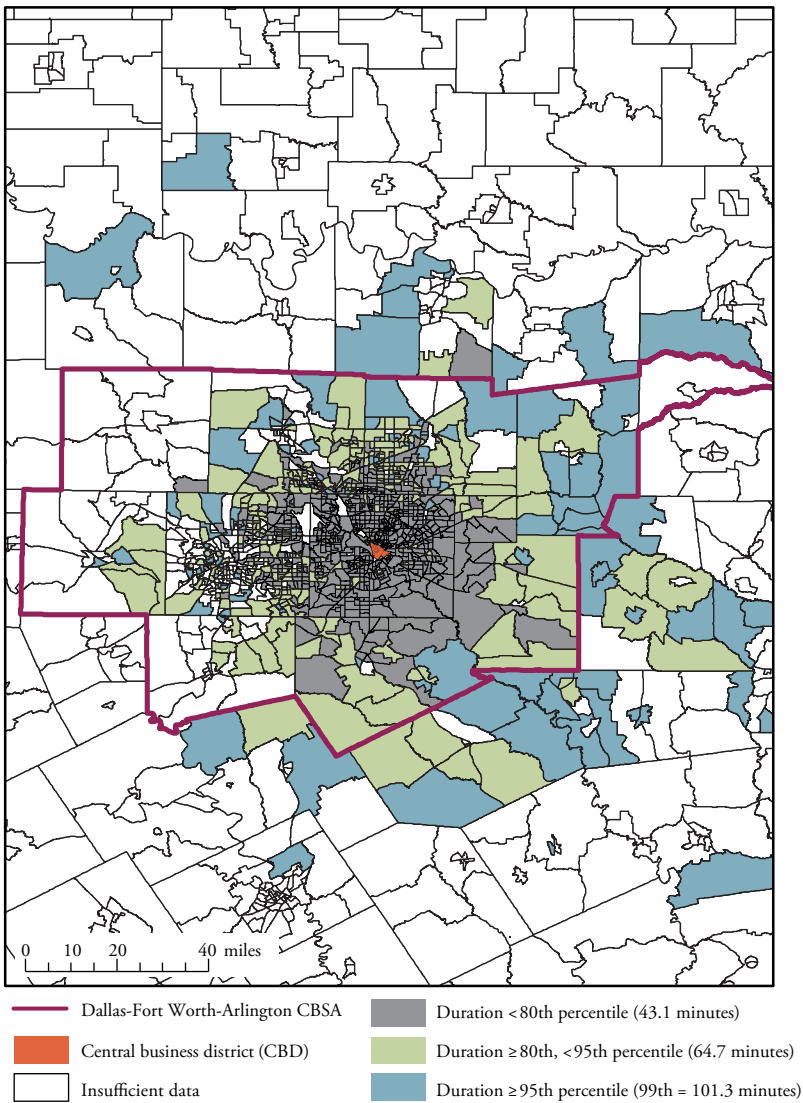
Notes: Map shows percentile commuting times during 2012–16 of workers driving to the CBD of the Los Angeles metropolitan area. Census tracts with large land area have low population density.
Sources: U.S. Census Bureau and author's calculations.

Commuting Time to Central Business District:
Chicago-Naperville-Joliet



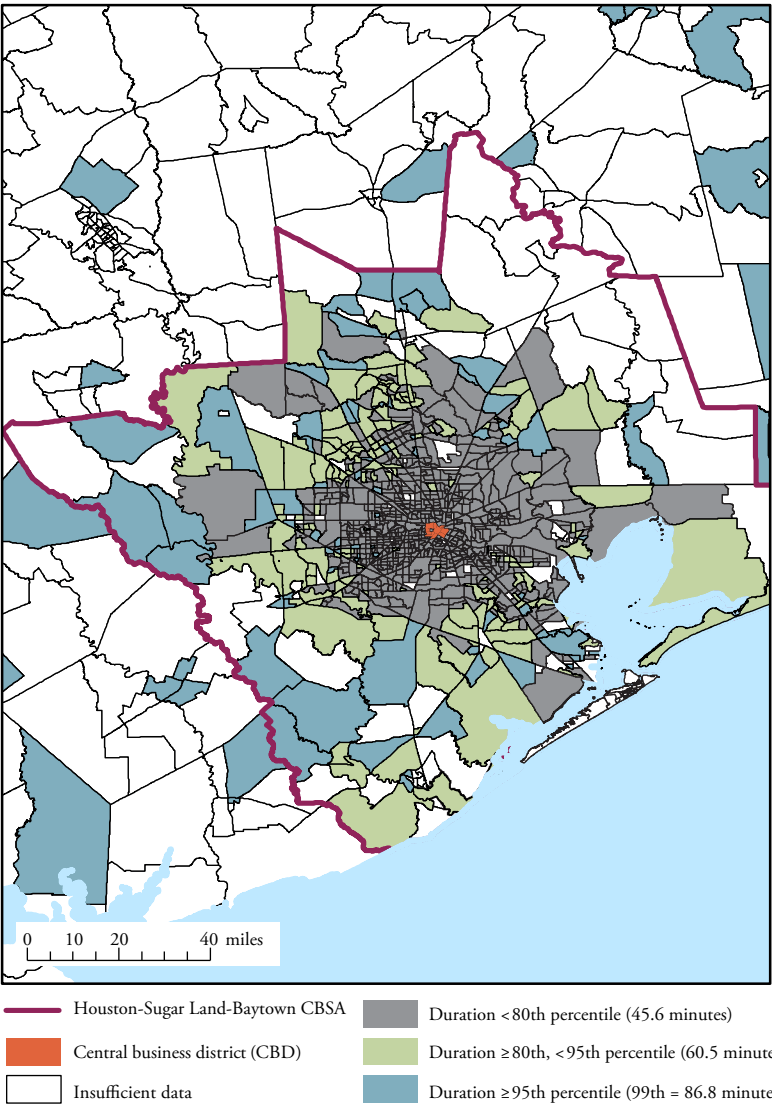
Notes: Map shows percentile commuting times during 2012–16 of workers driving to the CBD of the Chicago metropolitan area. Census tracts with large land area have low population density.
Sources: U.S. Census Bureau and author's calculations.

Commuting Time to Central Business District:
Dallas-Fort Worth-Arlington



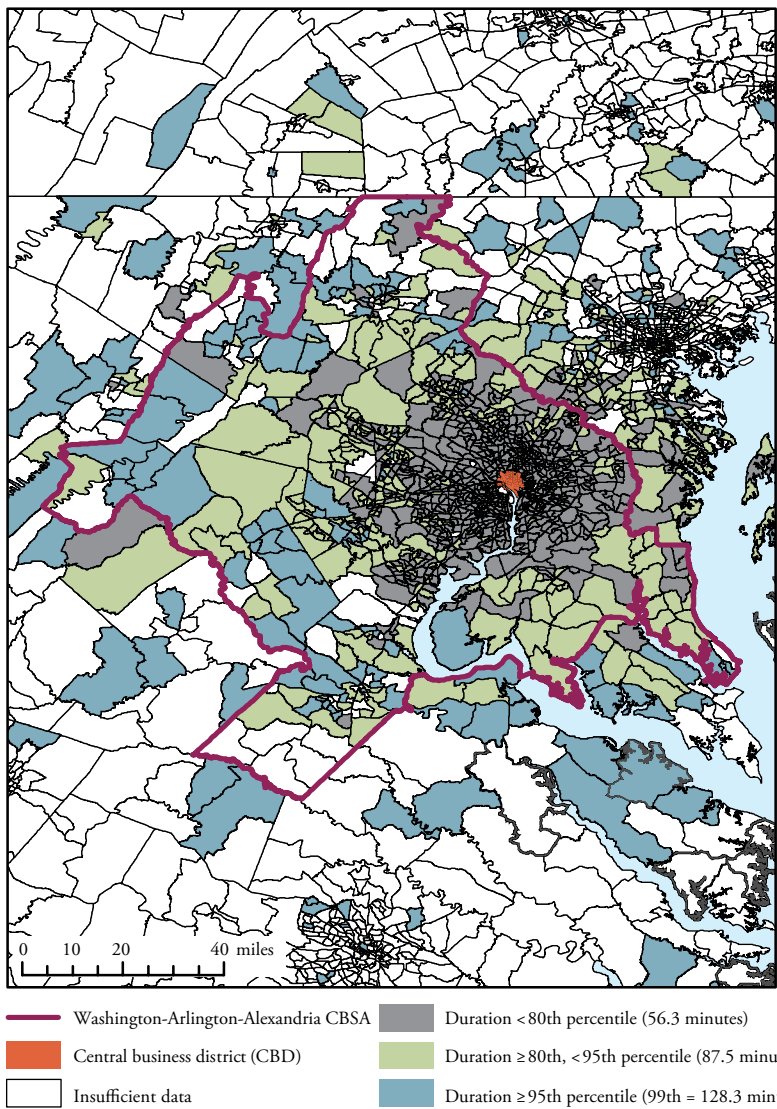
Notes: Map shows percentile commuting times during 2012–16 of workers driving to the CBD of the Dallas metropolitan area. Census tracts with large land area have low population density.
Sources: U.S. Census Bureau and author's calculations.

Commuting Time to Central Business District:
Houston-Sugar Land-Baytown



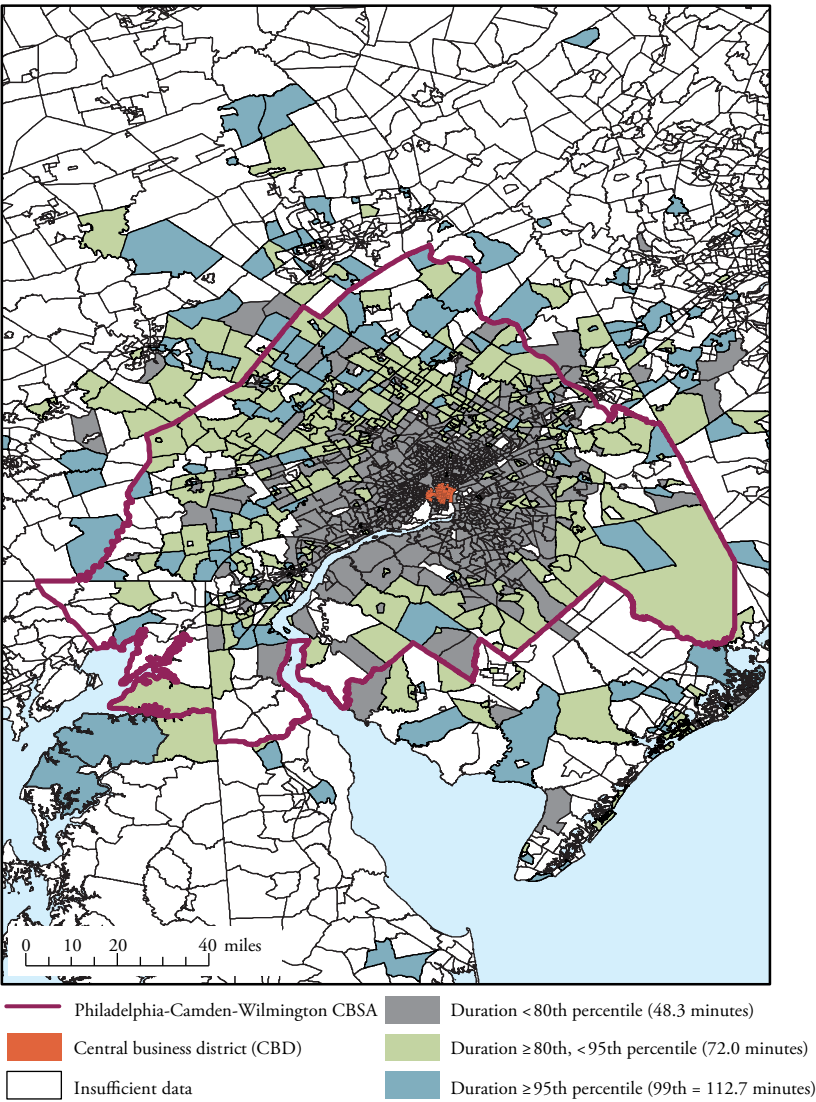
Notes: Map shows percentile commuting times during 2012–16 of workers driving to the CBD of the Houston metropolitan area. Census tracts with large land area have low population density.
Sources: U.S. Census Bureau and author's calculations.

Commuting Time to Central Business District:
Washington-Arlington-Alexandria



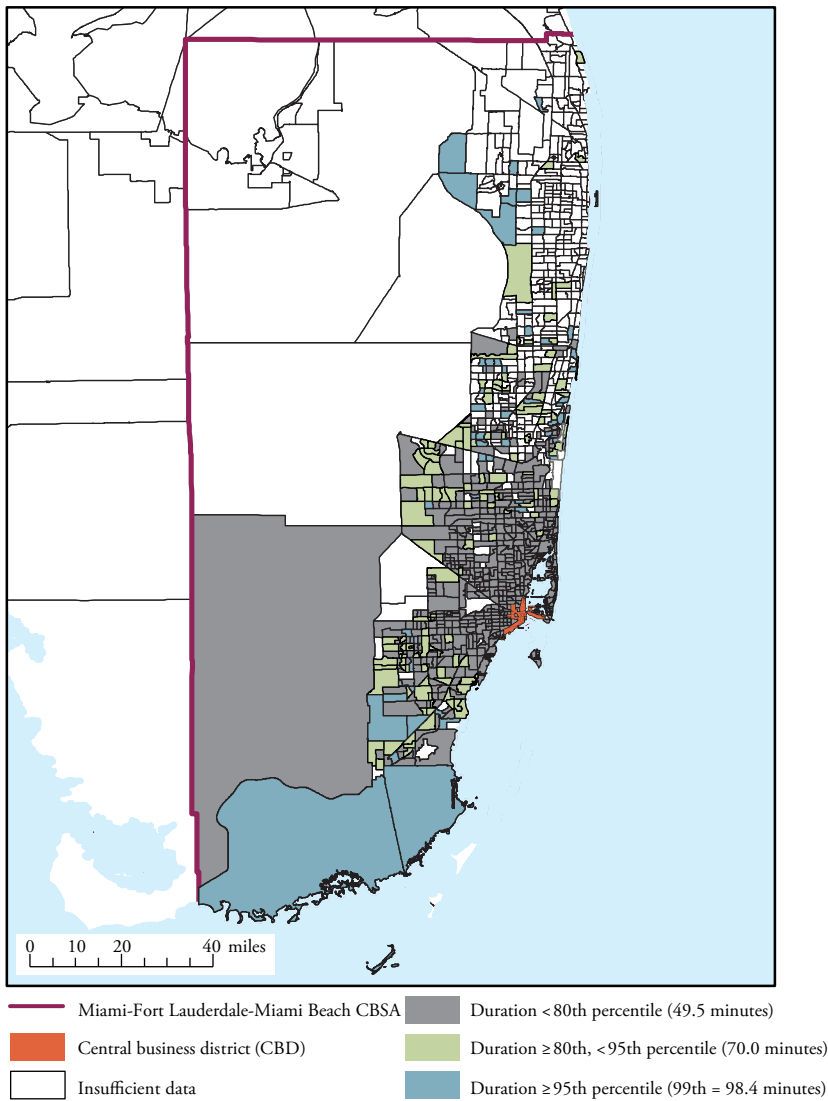
Notes: Map shows percentile commuting times during 2012–16 of workers driving to the CBD of the Washington DC metropolitan area. Census tracts with large land area have low population density.
Sources: U.S. Census Bureau and author's calculations.

Commuting Time to Central Business District:
Philadelphia-Camden-Wilmington



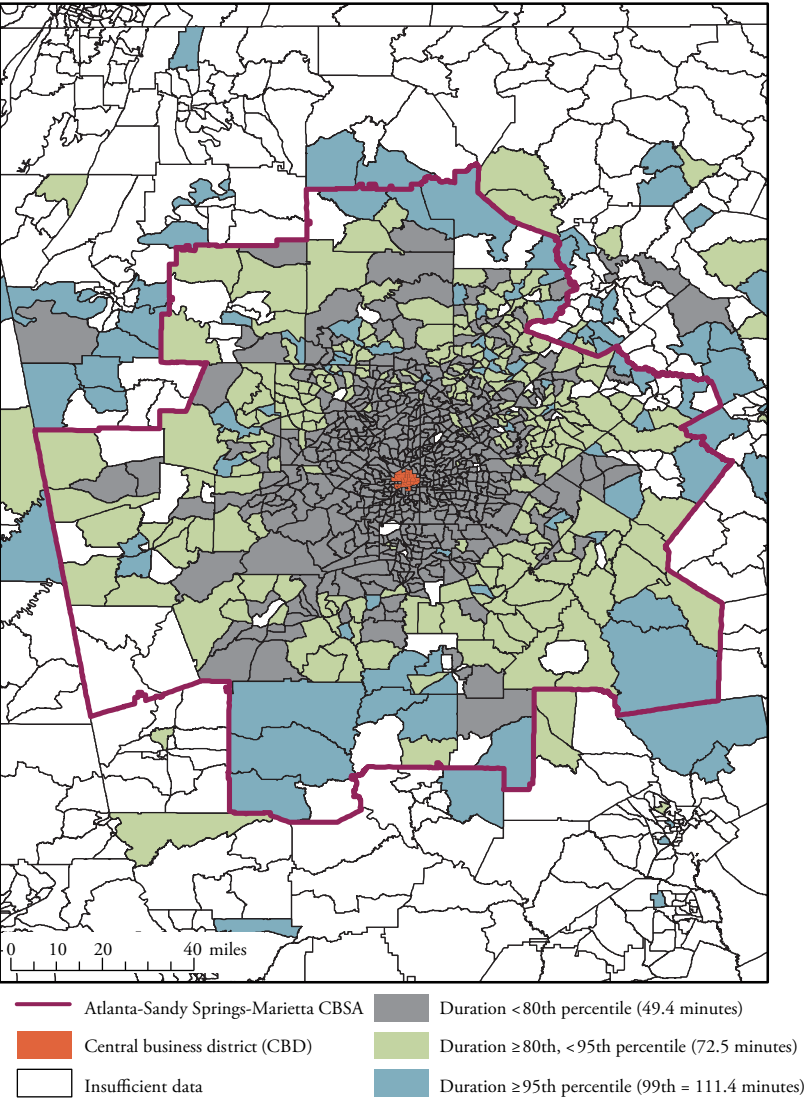
Notes: Map shows percentile commuting times during 2012–16 of workers driving to the CBD of the Philadelphia metropolitan area. Census tracts with large land area have low population density.
Sources: U.S. Census Bureau and author's calculations.

Commuting Time to Central Business District:
Miami-Fort Lauderdale-Miami Beach



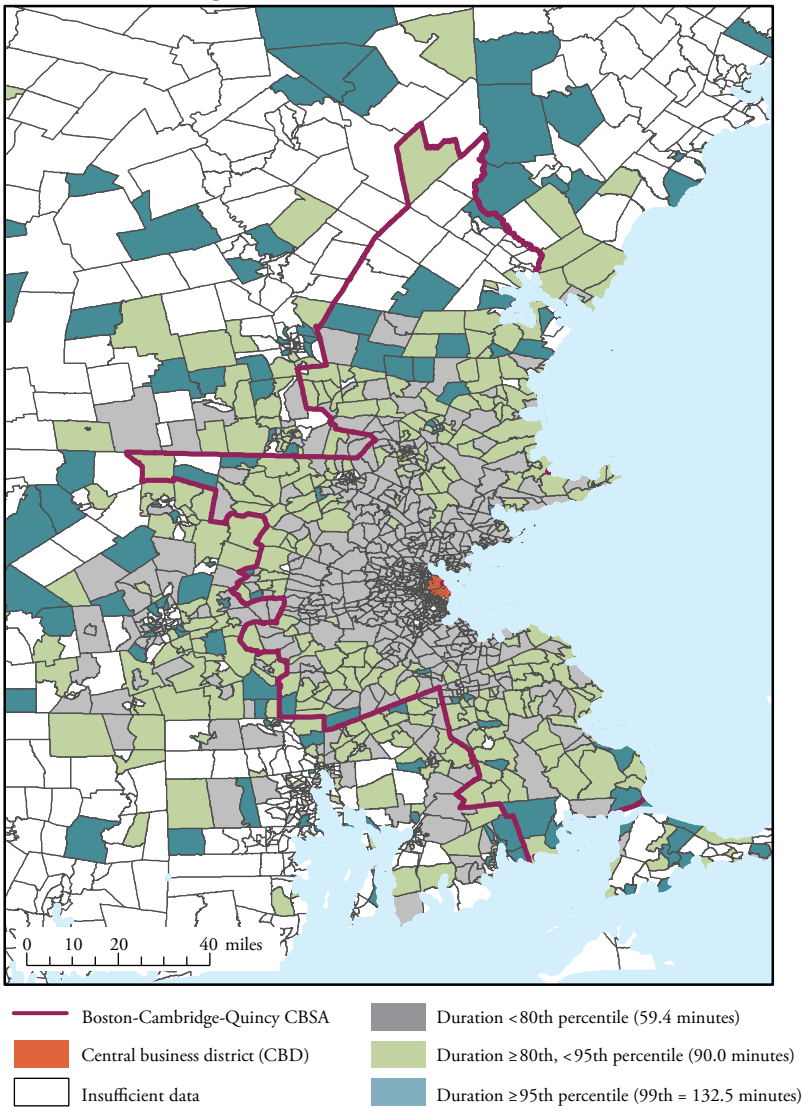
Notes: Map shows percentile commuting times during 2012–16 of workers driving to the CBD of the Miami metropolitan area. Census tracts with large land area have low population density.
Sources: U.S. Census Bureau and author's calculations.

Commuting Time to Central Business District:
Atlanta-Sandy Springs-Marietta



Notes: Map shows percentile commuting times during 2012–16 of workers driving to the CBD of the Atlanta metropolitan area. Census tracts with large land area have low population density.
Sources: U.S. Census Bureau and author's calculations.

Commuting Time to Central Business District:
Boston-Cambridge-Quincy



Notes: Map shows percentile commuting times during 2012–16 of workers driving to the CBD of the Boston metropolitan area. Census tracts with large land area have low population density.
Sources: U.S. Census Bureau and author's calculations.