

THE U.S. Energy DATABOOK

A summary of national and global energy indicators



FEBRUARY 13, 2026

FEDERAL RESERVE BANK *of* KANSAS CITY

SUMMARY OF CURRENT ENERGY CONDITIONS

Since the last edition of the U.S. Energy Databook, activity in the energy sector increased slightly. For the week ending December 26, West Texas Intermediate (WTI) crude oil averaged \$58.01 per barrel and North Sea Brent averaged \$63.21 per barrel, decreasing 10.5% and 8.7% respectively over the last quarter. The Henry Hub natural gas spot price averaged \$3.45 per million Btu for the week ending December 26, increasing 19.0% over the last three months. Over the last quarter, the total number of active drilling rigs in the United States decreased by 0.7% and is 7.5% below year-ago levels. U.S. crude oil production rose by 1.2% compared to three months ago. U.S. crude oil and petroleum products exports rose by 1.6% in the last quarter and imports fell by 1.6%. Global demand for petroleum showed little to no change and global petroleum production decreased by 0.5%.

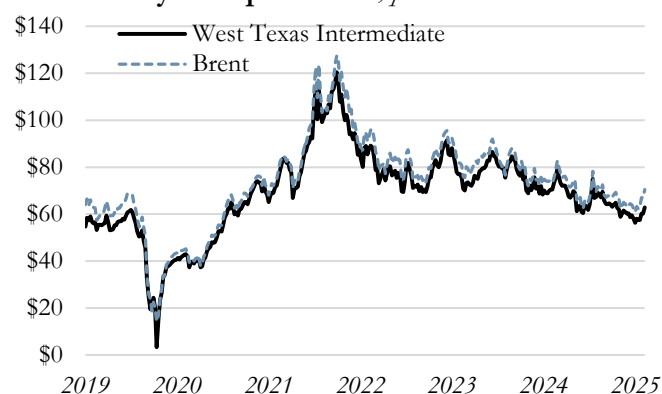
This databook provides current economic indicators to help monitor trends and allow comparison of past information. These indicators include: oil and natural gas prices; global petroleum production and demand; U.S. oil production and petroleum demand; U.S. crude oil stocks; OECD petroleum stocks; U.S. oil imports; U.S. oil exports; oil and gas drilling rig counts; and U.S. natural gas production. These indicators can be found on the following pages.



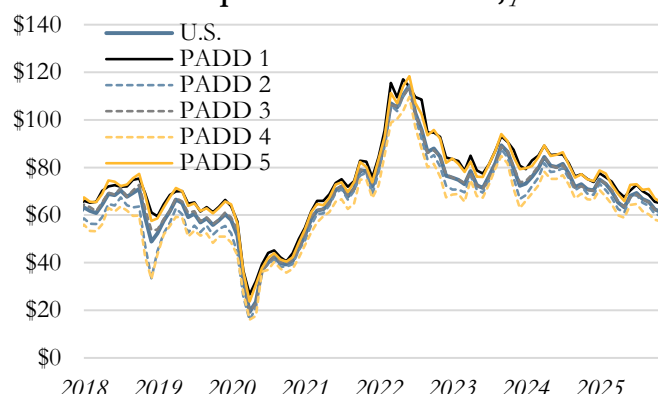
The Federal Reserve Bank of Kansas City's headquarters is located at 1 Memorial Drive in the heart of Kansas City, Missouri. The Federal Reserve Bank of Kansas City serves the Tenth Federal Reserve District, which includes Colorado, Kansas, western Missouri, Nebraska, northern New Mexico, Oklahoma and Wyoming. There are three branches across the Tenth Federal Reserve District located in Denver, Oklahoma City, and Omaha.

Weekly data through December 26, 2025

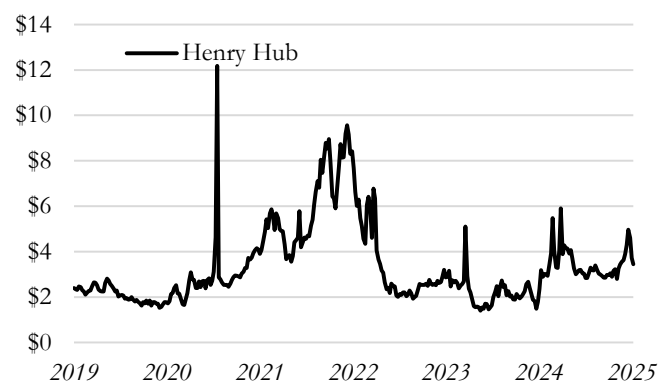
Weekly Oil Spot Prices, per barrel



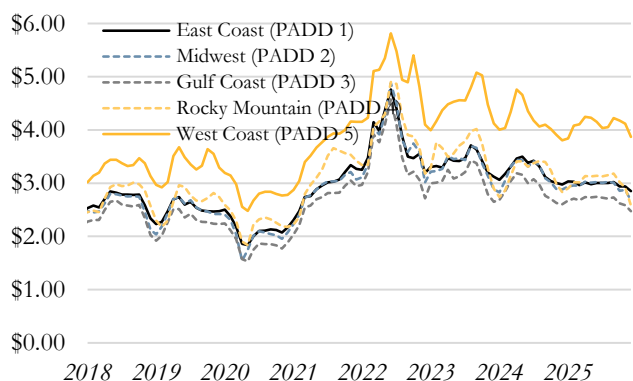
Refiner Acquisition Cost of Oil*, per barrel



Weekly Natural Gas Spot Prices, per mmbtu



Monthly Gasoline Prices by PADD, per gallon



Weekly Spot Prices, Change from

	Current	1 Week	1 Month	3 Months	6 Months	1 Year
Weekly Spot Prices	12/26/25	Ago	Ago	Ago	Ago	Ago
West Texas Intermediate	\$58.01	\$1.71	-\$0.68	-\$6.82	-\$8.77	-\$12.50
Brent	\$63.21	\$2.38	-\$1.17	-\$6.01	-\$6.75	-\$9.92
Henry Hub	\$3.45	-\$0.27	-\$0.84	\$0.55	\$0.15	\$0.52

Monthly Gasoline Spot Prices, Change from

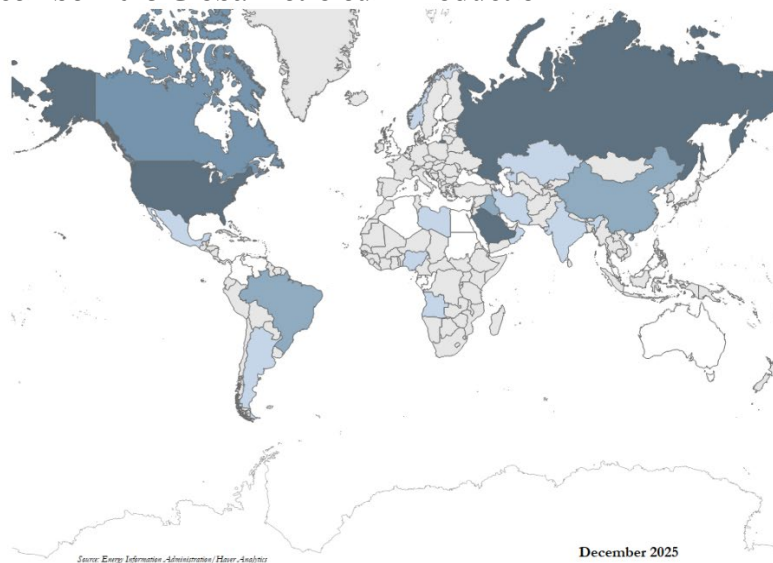
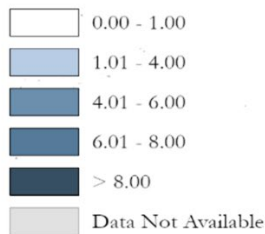
	Current	1 Month	3 Months	6 Months	1 Year
Geographic Area	Dec-25	Ago	Ago	Ago	Ago
East Coast (PADD 1)	\$2.85	-\$0.09	-\$0.17	-\$0.15	-\$0.12
Midwest (PADD 2)	\$2.67	-\$0.20	-\$0.34	-\$0.35	-\$0.21
Gulf Coast (PADD 3)	\$2.47	-\$0.11	-\$0.26	-\$0.27	-\$0.13
Rocky Mountain (PADD 4)	\$2.58	-\$0.34	-\$0.60	-\$0.56	-\$0.26
West Coast (PADD 5)	\$3.87	-\$0.25	-\$0.36	-\$0.28	\$0.06

*The cost of crude oil, including transportation and other fees paid by the refiner.

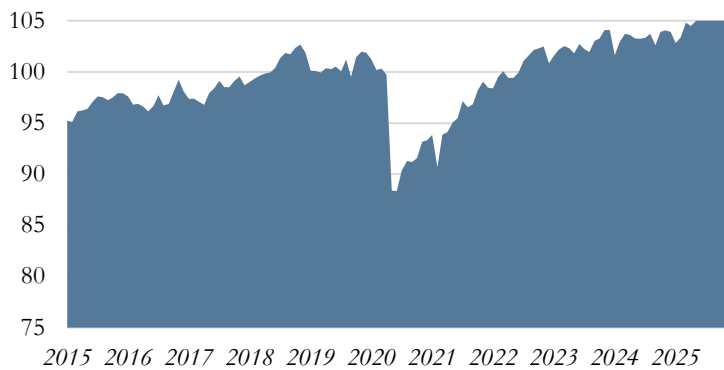
Source: U.S. Department of Energy, Energy Information Administration/Haver Analytics

December 2025 Global Petroleum Production

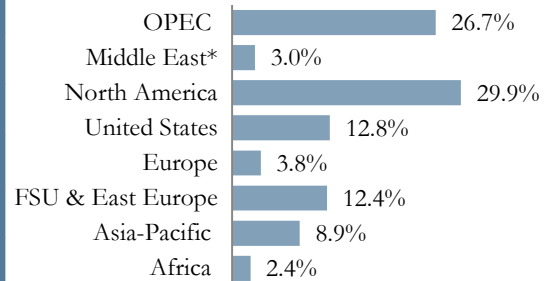
Million barrels per day



Monthly Global Petroleum Production, million barrels per day

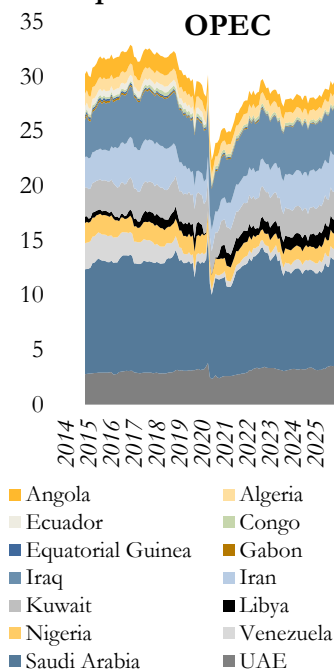


Regional Share of Production

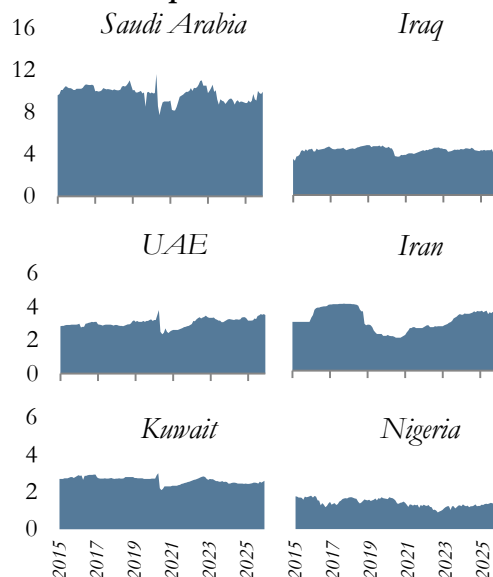


*Excludes OPEC

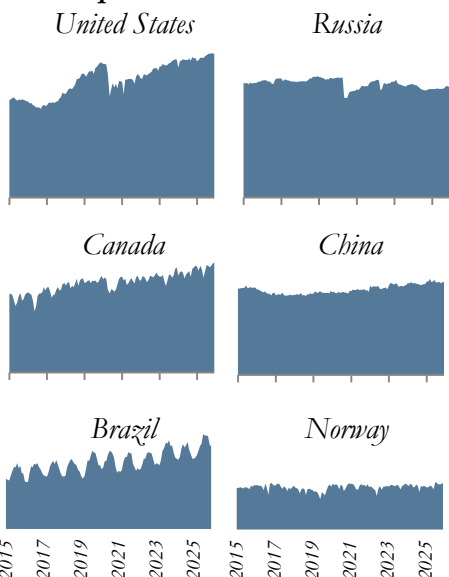
Top Crude Oil Producers, million barrels per day



Top OPEC Producers



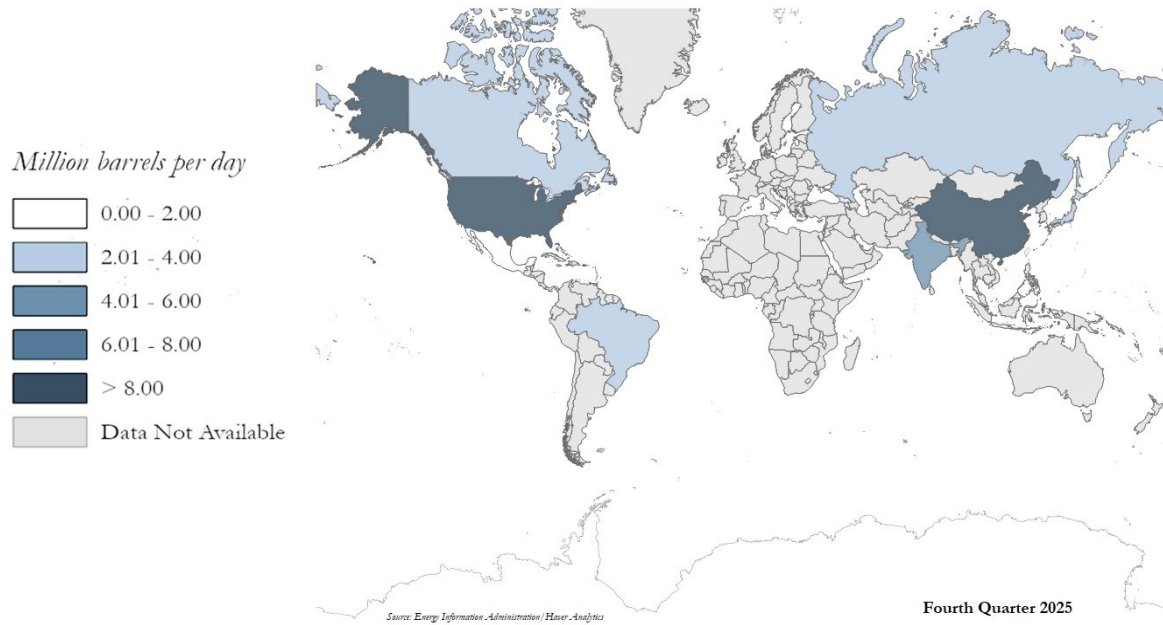
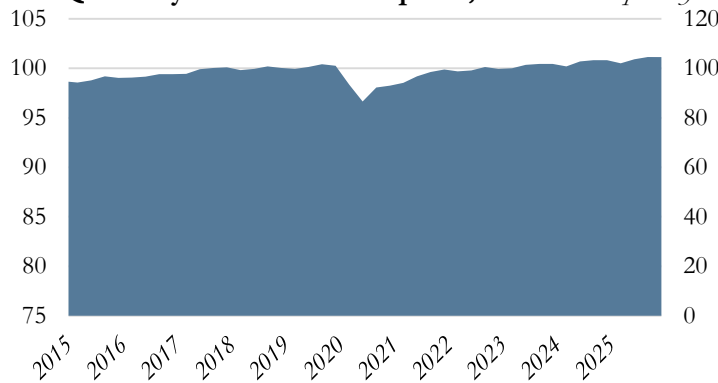
Top Non-OPEC Producers



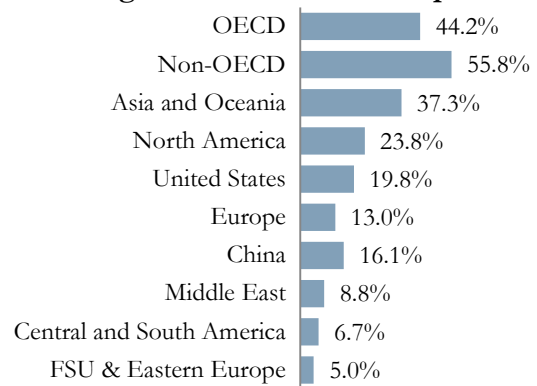
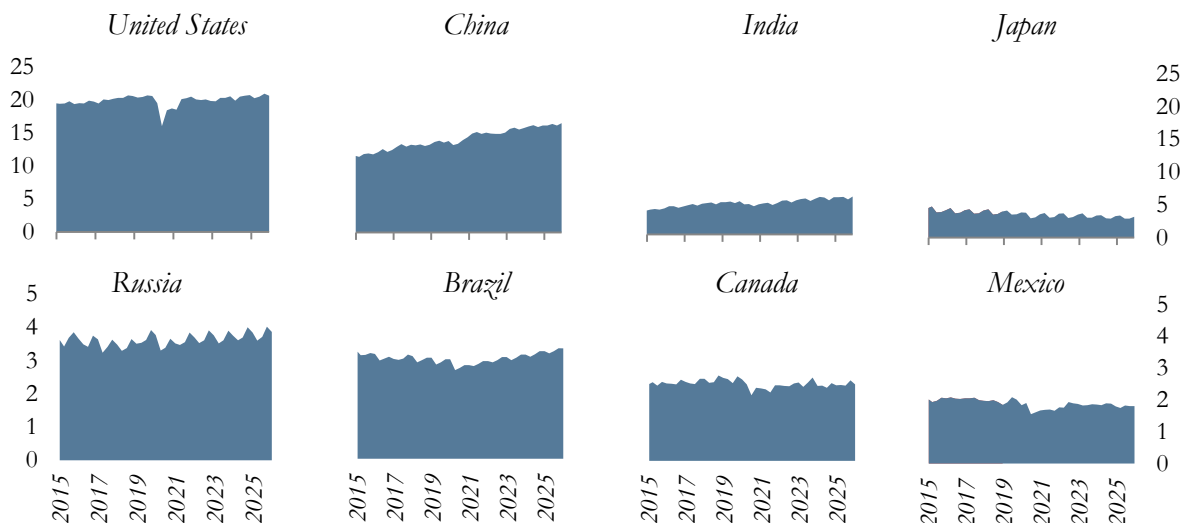
Note: OPEC country production values are for crude oil and non-OPEC country data is for petroleum production.

Source: U.S. Department of Energy, Energy Information Administration/Haver Analytics

Fourth Quarter 2025 Global Petroleum Consumption

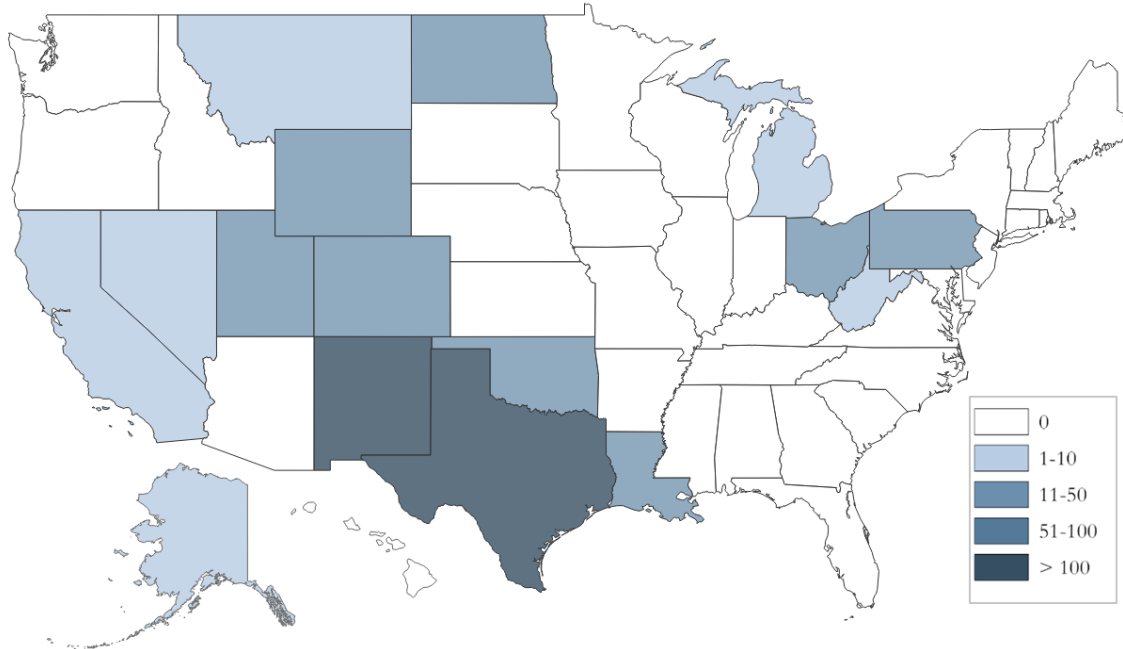
Quarterly Global Consumption, *million barrels per day*

Regional Share of Consumption

Top Petroleum Consumers, *million barrels per day*

Source: U.S. Department of Energy, Energy Information Administration/Haver Analytics

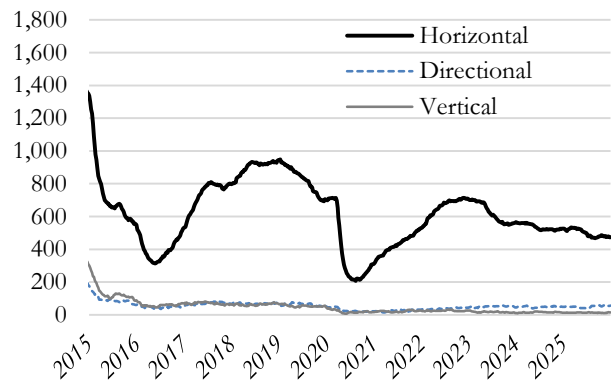
December 2025 Weekly Active Oil & Gas Drilling Rig Counts



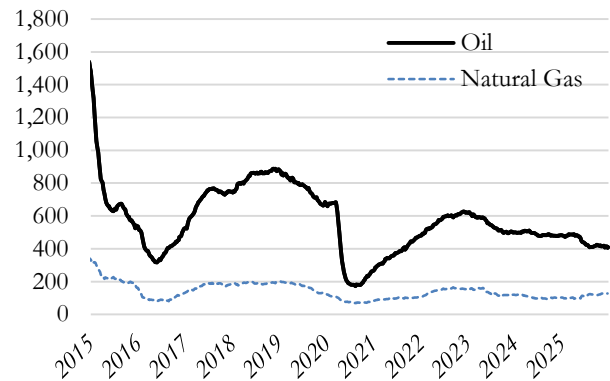
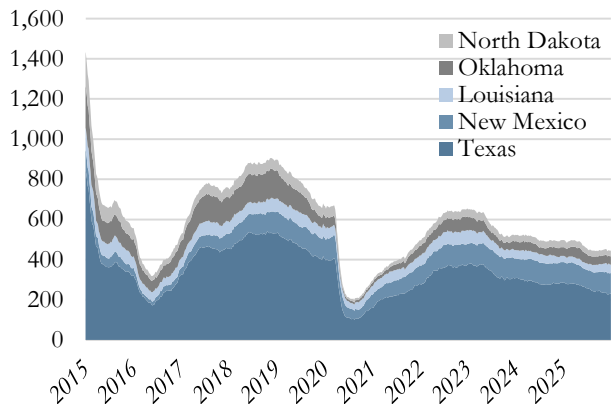
Source: Baker Hughes/Haver Analytics

December 26, 2025

U.S. Active Drilling Rigs by Trajectory



U.S. Active Drilling Rigs by Type

Top Five States for Drilling Activity
(Total Active Rigs)

Rig Count By Type

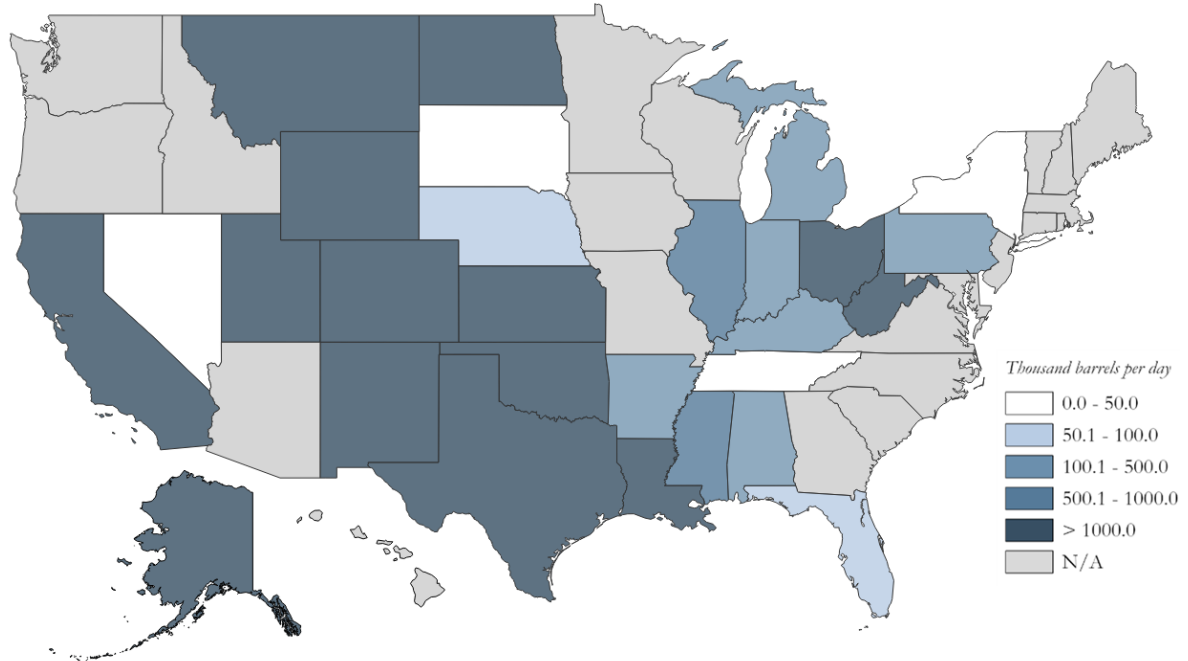
Rig Type	Current Week	1 Month Ago	3 Months Ago	1 Year Ago
Oil	409	407	424	483
Gas	127	130	117	102
Misc	9	7	8	4
Total	545	544	549	589

Rig Count By Type, Change from

Rig Type	Current Week	1 Month Ago	3 Months Ago	1 Year Ago
Oil	-	0.5%	-3.5%	-15.3%
Gas	-	-2.3%	8.5%	24.5%
Misc	-	28.6%	12.5%	125.0%
Total	-	0.2%	-0.7%	-7.5%

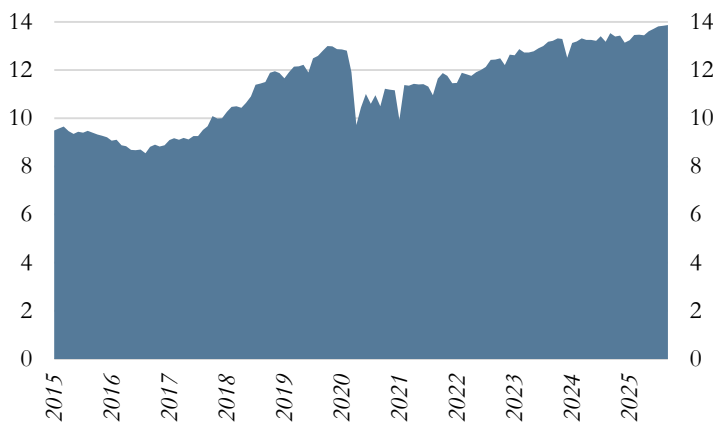
Source: Baker Hughes/Haver Analytics

October 2025 U.S. Crude Oil Production

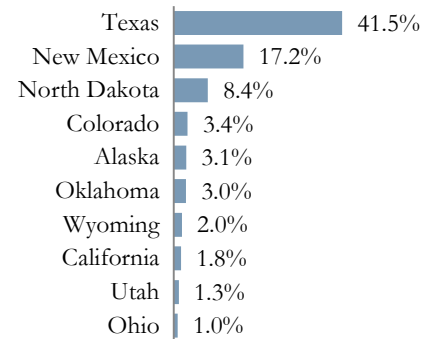


Source: Energy Information Administration/Haver Analytics

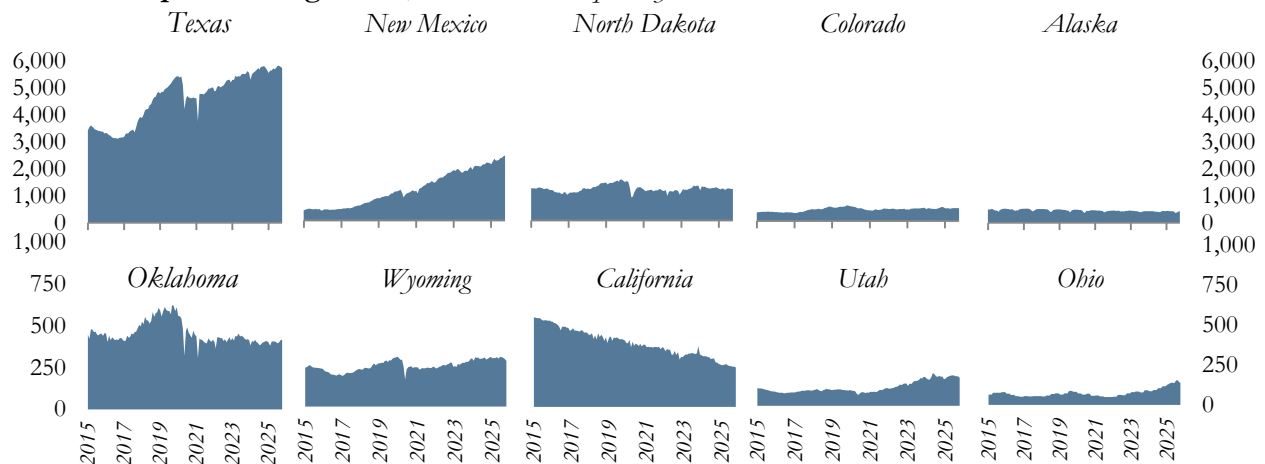
Monthly U.S. Production, million barrels per day



October 2025 Share of Production



Top Producing States, thousand barrels per day



Source: U.S. Department of Energy, Energy Information Administration/Haver Analytics

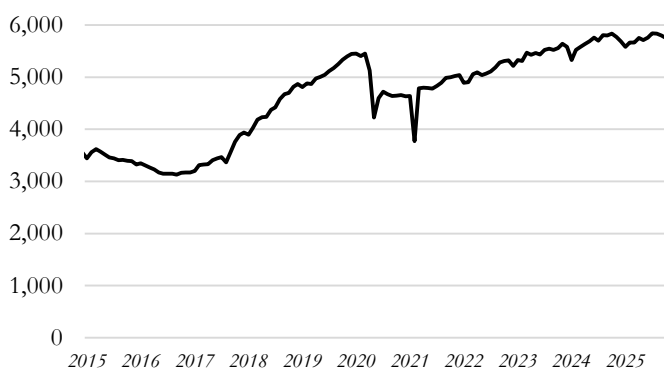
Data through October 2025

United States

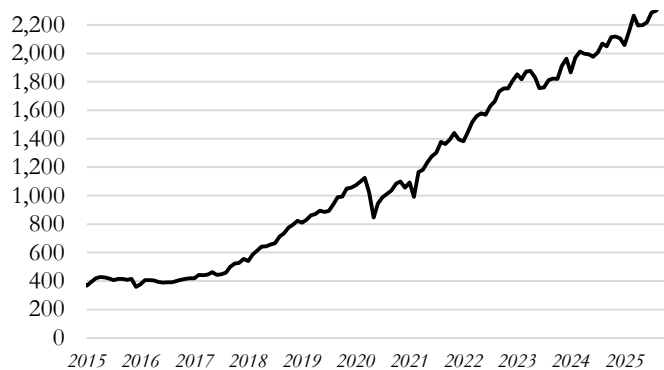
Thousand barrels per day



	United States	<i>Change from</i>
	<i>Thousand barrels per day</i>	
Oct-25	13,870	
Month Ago	13,839	0.2%
3 Months Ago	13,707	1.2%
6 Months Ago	13,466	3.0%
1 Year Ago	13,530	2.5%

Texas

	Texas	<i>Change from</i>
	<i>Thousand barrels per day</i>	
Oct-25	5,753	
Month Ago	5,798	-0.8%
3 Months Ago	5,840	-1.5%
6 Months Ago	5,750	0.1%
1 Year Ago	5,832	-1.4%
Share of U.S. Production	41.5%	

New Mexico

	New Mexico	<i>Change from</i>
	<i>Thousand barrels per day</i>	
Oct-25	2,382	
Month Ago	2,351	1.3%
3 Months Ago	2,287	4.1%
6 Months Ago	2,197	8.5%
1 Year Ago	2,114	12.7%
Share of U.S. Production	17.2%	

North Dakota

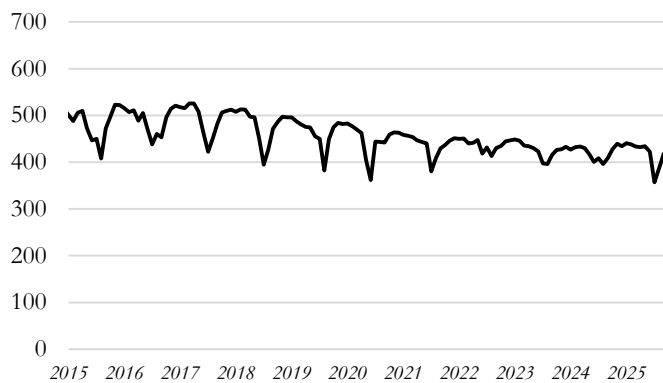
	North Dakota	<i>Change from</i>
	<i>Thousand barrels per day</i>	
Oct-25	1,163	
Month Ago	1,156	0.6%
3 Months Ago	1,177	-1.2%
6 Months Ago	1,161	0.2%
1 Year Ago	1,179	-1.4%
Share of U.S. Production	8.4%	

Source: U.S. Department of Energy, Energy Information Administration/Haver Analytics

Data through October 2025

Colorado *Thousand barrels per day*

	Colorado <i>Thousand barrels per day</i>	<i>Change from</i>
Oct-25	475	
Month Ago	468	1.5%
3 Months Ago	469	1.4%
6 Months Ago	448	6.1%
1 Year Ago	492	-3.3%
Share of U.S. Production	3.4%	

Alaska

	Alaska <i>Thousand barrels per day</i>	<i>Change from</i>
Oct-25	428	
Month Ago	418	2.3%
3 Months Ago	357	19.8%
6 Months Ago	433	-1.1%
1 Year Ago	428	-0.1%
Share of U.S. Production	3.1%	

Oklahoma

	Oklahoma <i>Thousand barrels per day</i>	<i>Change from</i>
Oct-25	417	
Month Ago	414	0.7%
3 Months Ago	395	5.7%
6 Months Ago	406	2.6%
1 Year Ago	402	3.8%
Share of U.S. Production	3.0%	

Wyoming

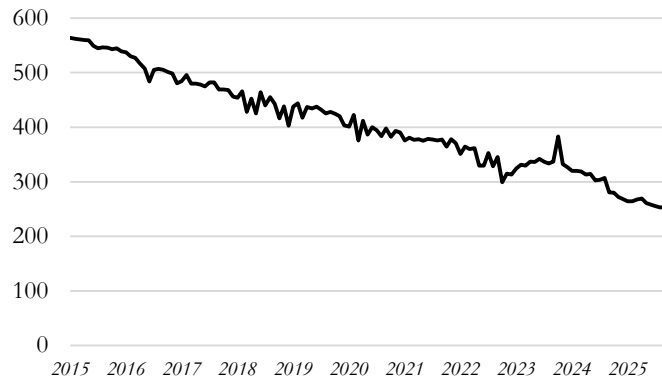
	Wyoming <i>Thousand barrels per day</i>	<i>Change from</i>
Oct-25	277	
Month Ago	288	-3.7%
3 Months Ago	299	-7.2%
6 Months Ago	298	-7.1%
1 Year Ago	290	-4.5%
Share of U.S. Production	2.0%	

Source: U.S. Department of Energy, Energy Information Administration/Haver Analytics

Data through October 2025

California

Thousand barrels per day



	California	<i>Change from</i>
<i>Thousand barrels per day</i>		
Oct-25	248	
Month Ago	254	-2.1%
3 Months Ago	255	-2.7%
6 Months Ago	270	-7.8%
1 Year Ago	280	-11.2%
Share of U.S. Production	1.8%	

Utah

	Utah	<i>Change from</i>
<i>Thousand barrels per day</i>		
Oct-25	178	
Month Ago	187	-4.6%
3 Months Ago	188	-5.1%
6 Months Ago	192	-7.2%
1 Year Ago	185	-3.9%
Share of U.S. Production	1.3%	

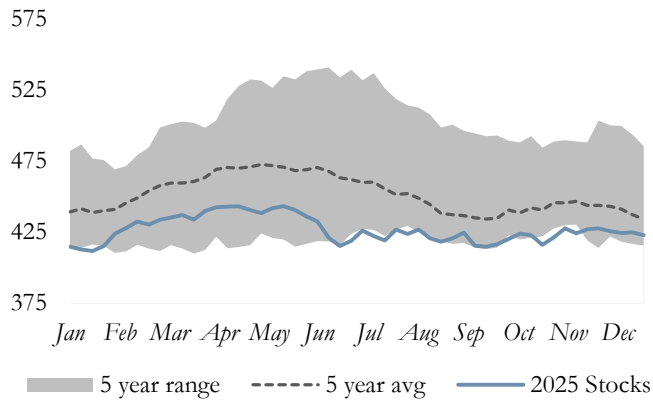
Ohio

	Ohio	<i>Change from</i>
<i>Thousand barrels per day</i>		
Oct-25	138	
Month Ago	146	-5.1%
3 Months Ago	152	-9.0%
6 Months Ago	139	-0.3%
1 Year Ago	117	18.8%
Share of U.S. Production	1.0%	

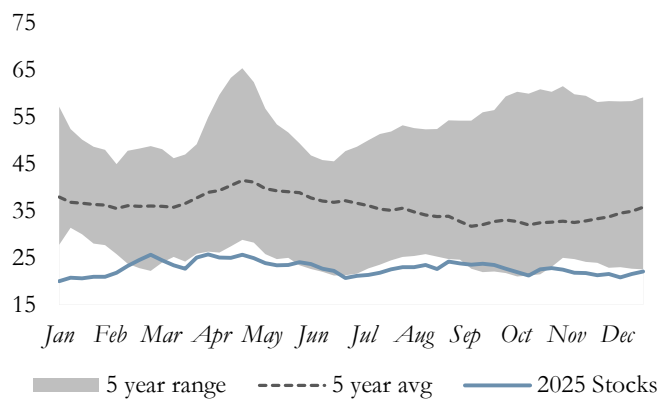
Source: U.S. Department of Energy, Energy Information Administration/Haver Analytics

December 2025 Weekly U.S. Crude Oil Stocks

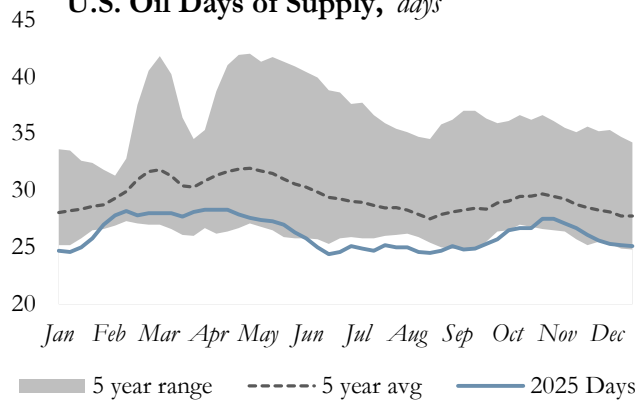
U.S. Oil Stocks, million barrels*



Cushing, OK Oil Stocks, million barrels



U.S. Oil Days of Supply, days



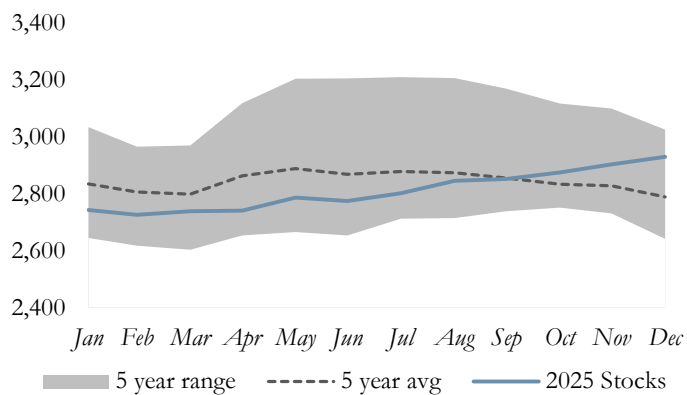
Crude Oil Stocks

	1 Week Ago	1 Year Ago
U.S.	-0.5%	1.8%
Cushing, OK	2.5%	-1.9%
Days of Supply	-0.4%	1.2%
East Coast (PADD 1)	-2.1%	-12.8%
Midwest (PADD 2)	0.8%	0.1%
Gulf Coast (PADD 3)	-1.2%	4.7%
Rocky Mountain (PADD 4)	0.0%	1.4%
West Coast (PADD 5)	0.5%	-5.4%

*Stocks include those domestic and Customs-cleared foreign stocks held at, or in transit to, refineries and bulk terminals, and stocks in pipelines.

September 2025 OECD Commercial Petroleum Inventory

OECD Commercial Petroleum Inventory, million barrels



Petroleum Stocks

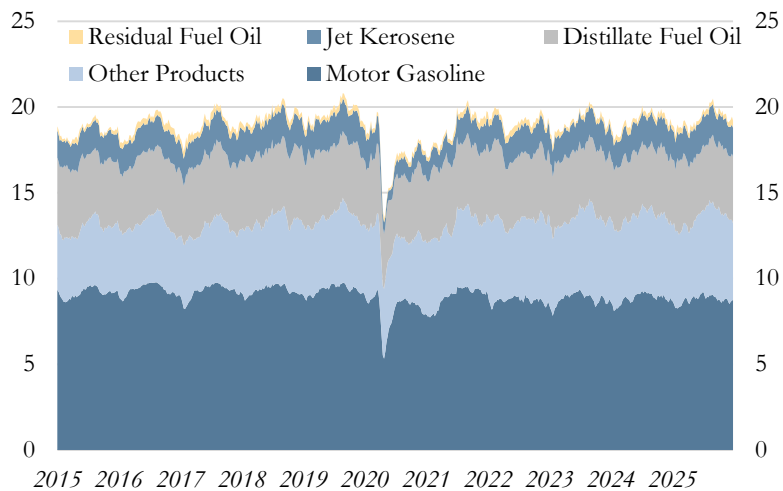
	Million Barrels	Change from
Current Month	2,931	
1 Month Ago	2,904	0.9%
3 Months Ago	2,853	2.7%
6 Months Ago	2,775	5.6%
1 Year Ago	2,743	6.9%

Source: U.S. Department of Energy, Energy Information Administration/Haver Analytics

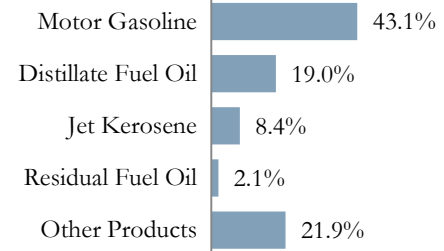
December 2025 Weekly U.S. Demand for Petroleum Products

4-Week Averages

All Petroleum Products, million barrels per day



Share of Total Consumption



U.S. Consumption by Product & Percent Change

U.S. Consumption by Product, thousand barrels per day

	Current 12/26/25	1 Month Ago	3 Months Ago	6 Months Ago	1 Year Ago
All Products	20,335	20,339	20,344	20,288	20,338
Motor Gasoline	8,760	8,652	8,699	9,199	8,728
Distillate Fuel Oil	3,870	3,673	3,588	3,740	3,858
Jet Kerosene	1,705	1,680	1,654	1,771	1,742
Residual Fuel Oil	422	238	289	227	248
Other Products	4,455	4,860	5,327	4,782	4,381

U.S. Consumption by Product, Change from

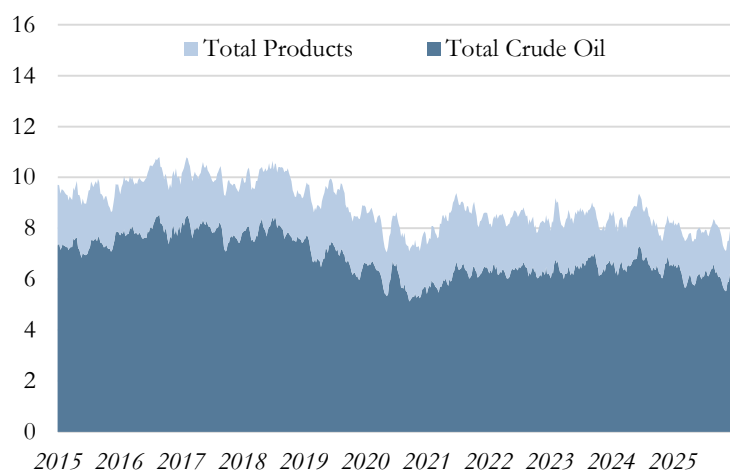
	Current 12/26/25	1 Month Ago	3 Months Ago	6 Months Ago	1 Year Ago
All Products	-	0.0%	0.0%	0.2%	0.0%
Motor Gasoline	-	1.2%	0.7%	-4.8%	0.4%
Distillate Fuel Oil	-	5.4%	7.9%	3.5%	0.3%
Jet Kerosene	-	1.5%	3.1%	-3.7%	-2.1%
Residual Fuel Oil	-	77.3%	46.0%	85.9%	70.2%
Other Products	-	-8.3%	-16.4%	-6.8%	1.7%

Source: U.S. Department of Energy, Energy Information Administration/Haver Analytics

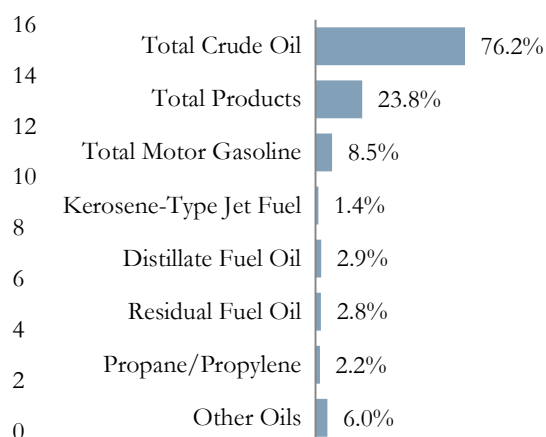
December 2025 Weekly U.S. Imports of Crude Oil & Petroleum Products

4-Week Averages

Imports, million barrels per day



Share of Total Imports



U.S. Imports by Product*

Thousand barrels per day

	Current 12/26/25	1 Month Ago	3 Months Ago	6 Months Ago	1 Year Ago
Total Crude Oil	6,038	5,897	6,073	6,136	6,507
Total Products	1,888	1,626	1,982	1,734	1,670
Total Motor Gasoline	672	657	606	947	635
Kerosene-Type Jet Fuel	113	134	96	78	76
Distillate Fuel Oil	228	161	125	112	174
Residual Fuel Oil	221	108	144	68	115
Propane/Propylene	174	133	111	76	144
Other Oils	479	434	900	453	527
Total Imports	7,926	7,523	8,055	7,870	8,177

U.S. Imports by Product, Change from

	Current 12/26/25	1 Month Ago	3 Months Ago	6 Months Ago	1 Year Ago
Total Crude Oil	-	2.4%	-0.6%	-1.6%	-7.2%
Total Products	-	16.1%	-4.7%	8.9%	13.1%
Total Motor Gasoline	-	2.3%	10.9%	-29.0%	5.8%
Kerosene-Type Jet Fuel	-	-15.7%	17.7%	44.9%	48.7%
Distillate Fuel Oil	-	41.6%	82.4%	103.6%	31.0%
Residual Fuel Oil	-	104.6%	53.5%	225.0%	92.2%
Propane/Propylene	-	30.8%	56.8%	128.9%	20.8%
Other Oils	-	10.4%	-46.8%	5.7%	-9.1%
Total Imports	-	5.4%	-1.6%	0.7%	-3.1%

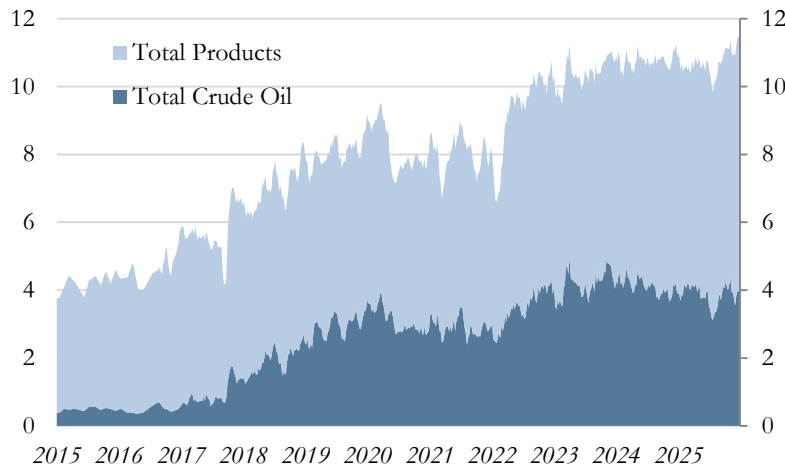
*Totals may not sum due to component rounding

Source: U.S. Department of Energy, Energy Information Administration/Haver Analytics

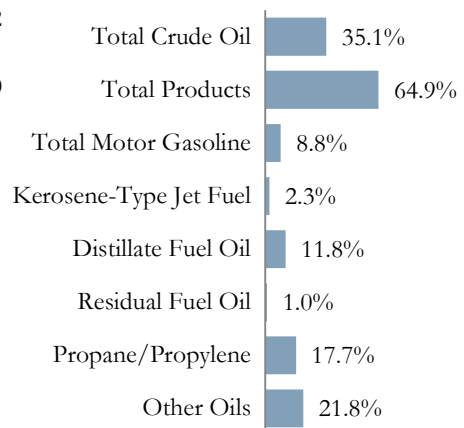
December 2025 Weekly U.S. Exports of Crude Oil & Petroleum Products

4-Week Averages

Exports, million barrels per day



Share of Total Exports



U.S. Exports by Product*

Thousand barrels per day

	Current 12/26/25	1 Month Ago	3 Months Ago	6 Months Ago	1 Year Ago
Total Crude Oil	3,932	3,546	4,064	3,556	3,893
Total Products	7,281	7,359	6,969	6,937	7,006
Total Motor Gasoline	984	1,078	946	801	1,021
Kerosene-Type Jet Fuel	263	221	232	221	224
Distillate Fuel Oil	1,318	1,387	1,295	1,439	1,387
Residual Fuel Oil	117	140	145	172	131
Propane/Propylene	1,982	1,881	1,948	1,858	1,850
Other Oils	2,447	2,504	2,297	2,308	2,257
Total Exports	11,213	10,905	11,033	10,493	10,899

U.S. Exports by Product, Change from

	Current 12/26/25	1 Month Ago	3 Months Ago	6 Months Ago	1 Year Ago
Total Crude Oil	-	10.9%	-3.2%	10.6%	1.0%
Total Products	-	-1.1%	4.5%	5.0%	3.9%
Total Motor Gasoline	-	-8.7%	4.0%	22.8%	-3.6%
Kerosene-Type Jet Fuel	-	19.0%	13.4%	19.0%	17.4%
Distillate Fuel Oil	-	-5.0%	1.8%	-8.4%	-5.0%
Residual Fuel Oil	-	-16.4%	-19.3%	-32.0%	-10.7%
Propane/Propylene	-	5.4%	1.7%	6.7%	7.1%
Other Oils	-	-2.3%	6.5%	6.0%	8.4%
Total Exports	-	2.8%	1.6%	6.9%	2.9%

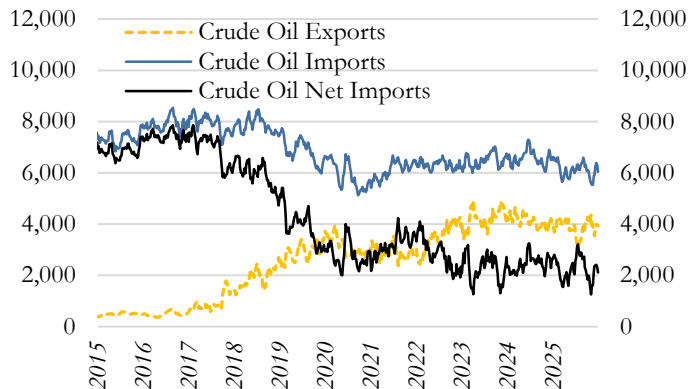
*Totals may not sum due to rounding

Source: U.S. Department of Energy, Energy Information Administration/Haver Analytics

December 2025 Weekly U.S. Net Imports of Crude Oil & Petroleum Products

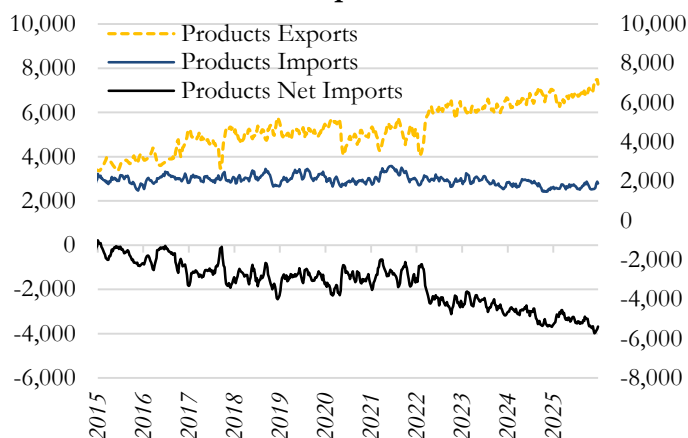
4-Week Averages, Thousand barrels per day

Crude Oil Net Imports



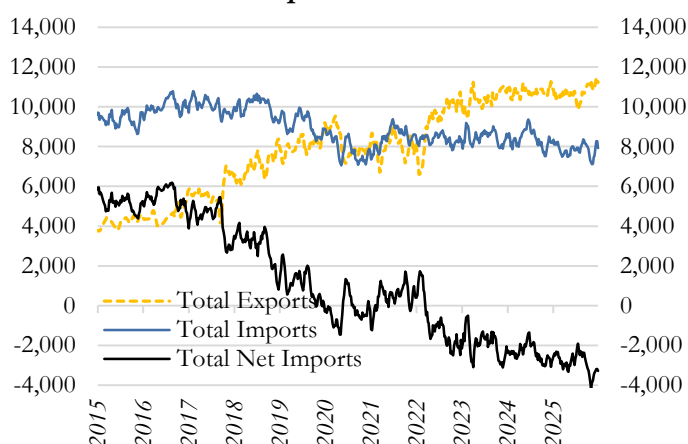
Crude Oil Net Imports		Change from
Thousand barrels per day		
12/26/25	2,106	
Month Ago	2,351	-10.4%
3 Months Ago	2,009	4.8%
6 Months Ago	2,580	-18.4%
1 Year Ago	2,615	-19.5%

Products Net Imports



Products Net Imports		Change from
Thousand barrels per day		
12/26/25	-5,393	
Month Ago	-5,732	-
3 Months Ago	-4,987	-
6 Months Ago	-5,203	-
1 Year Ago	-5,336	-

Total Net Imports

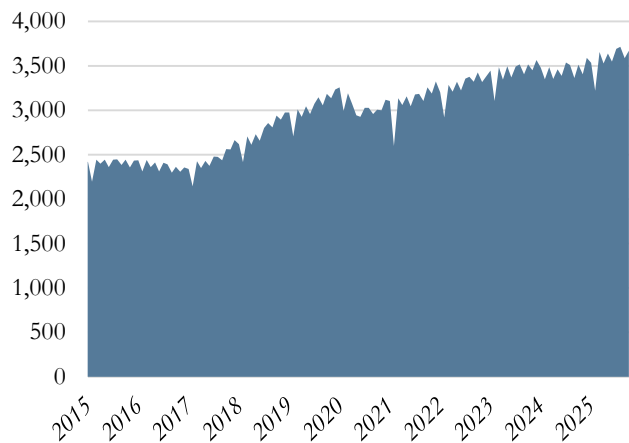


Total Net Imports		Change from
Thousand barrels per day		
12/26/25	-3,287	
Month Ago	-3,381	-
3 Months Ago	-2,978	-
6 Months Ago	-2,623	-
1 Year Ago	-2,721	-

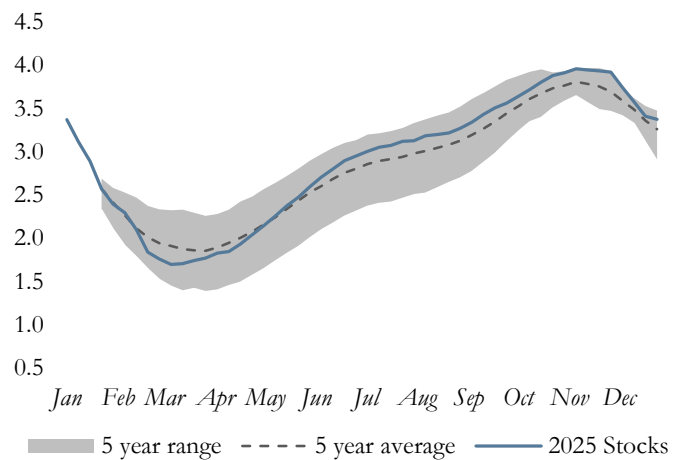
Source: U.S. Department of Energy, Energy Information Administration/Haver Analytics

U.S. Natural Gas Production & Stocks

October 2025 Production
Total U.S. Production, Billion cubic feet (Bcf)



December 2025 Weekly Stocks
U.S. Natural Gas Stocks, Billion cubic feet (Bcf)



U.S. Natural Gas, Billion cubic feet (Bcf)

	Current Period*	1 Month Ago	3 Months Ago	6 Months Ago	1 Year Ago
U.S. Production	0	3,671	3,714	3,639	3,404
U.S. Stocks	2,823	3,375	3,882	3,123	2,571

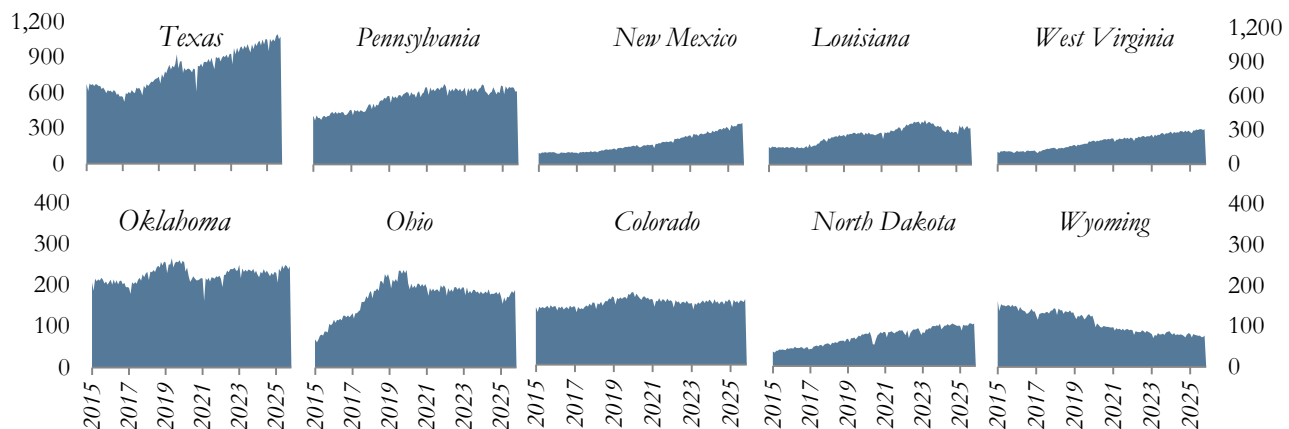
Share of Production

Texas	0.0%
Pennsylvania	0.0%
New Mexico	0.0%
Louisiana	0.0%
West Virginia	0.0%
Oklahoma	0.0%
Ohio	0.0%
Colorado	0.0%
North Dakota	0.0%
Wyoming	0.0%

U.S. Natural Gas, Change from

	Current Period*	1 Month Ago	3 Months Ago	6 Months Ago	1 Year Ago
U.S. Production	-	-100.0%	-100.0%	-100.0%	-100.0%
U.S. Stocks	-	-16.4%	-27.3%	-9.6%	9.8%

Top Producing States, Billion cubic feet (Bcf)



*U.S. production is monthly data & stocks are weekly data

Source: U.S. Department of Energy, Energy Information Administration/Haver Analytics

Definitions:

West Texas Intermediate: A crude oil produced in Texas and southern Oklahoma which serves as a reference or "marker" for pricing a number of other crude streams and is traded in the domestic spot market at Cushing, Oklahoma.

Brent: A blended crude oil produced in the North Sea region which serves as a reference or "marker" for pricing a number of other international crude streams.

Petroleum products include unfinished oils, liquefied petroleum gases, pentanes plus, aviation gasoline, motor gasoline, naphtha-type jet fuel, kerosene-type jet fuel, kerosene, distillate fuel oil, residual fuel oil, petrochemical feedstocks, special naphthas, lubricants, waxes, petroleum coke, asphalt, road oil, still gas, and miscellaneous products.

Refined petroleum products include but are not limited to gasolines, kerosene, distillates (including No. 2 fuel oil), liquefied petroleum gas, asphalt, lubricating oils, diesel fuels, and residual fuels.

Notes:

Page 2: Petroleum Administration for Defense Districts (PADD) are geographic aggregations of the 50 states and the District of Columbia into five districts by the Petroleum Administration for Defense in 1950. These districts were originally defined during World War II for purposes of administering oil allocation. For more information, visit: <http://www.eia.gov/petroleum/supply/monthly/pdf/append.pdf>

Page 3: For OPEC countries and the U.S., only crude oil production data is used. For non-OPEC countries (excluding the U.S.) total petroleum production data is used. Total petroleum production includes production of crude oil (including lease condensates), natural gas plant liquids, biofuels, other liquids, and refinery processing gains.

Page 5: The active rig count is the number of rigs actively exploring for or developing oil or natural gas. Rig counts provide an indicator of new drilling activity and potential for expanded crude oil or natural gas production.

Pages 10: Crude oil stocks are stocks of crude oil and lease condensate held at refineries, in pipelines, at pipeline terminals, and on leases.

Crude oil stocks for Cushing include domestic and foreign crude oil stocks held in tank farms in Lincoln, Payne, and Creek counties in Oklahoma. Cushing, Oklahoma, is the designated delivery point for NYMEX crude oil futures contracts.

Days of supply are calculated by taking the current stock level and dividing by product supplied (used as an estimate of demand) averaged over the most recent four-week period. For crude oil, refinery inputs of crude oil are used as a proxy for demand.

Notes:

Page 11: Petroleum Consumption approximately represents consumption of petroleum products because it measures the disappearance of these products from primary sources, i.e., refineries, natural gas-processing plants, blending plants, pipelines, and bulk terminals.

Data Revisions

Most data are revised periodically to correct for errors and incorporate additional information as it becomes available. Data shown in this report are subject to change.

Regional Economic Analysis

Sign up to receive *The U.S. Energy Databook* and other publications each month via email using the link below:

<http://www.kansascityfed.org/ealert/>

For more analysis on the U.S. energy industry, read the latest release of *The Tenth District Energy Survey*.

<https://www.kansascityfed.org/research/indicatorsdata/energy>

Additional Resources Available

- Agricultural Surveys
- Manufacturing Survey
- Services Survey
- Energy Survey
- Regional Economic Analysis
- Speeches
- Banker Resources
- Economic Indicators
- Economic Research
- Educational Tools

Visit: www.KansasCityFed.org