

# THE U.S. Energy DATABOOK

*A summary of national and global energy indicators*



AUGUST 19, 2025

FEDERAL RESERVE BANK of KANSAS CITY

## SUMMARY OF CURRENT ENERGY CONDITIONS

Since the last edition of the U.S. Energy Databook, activity in the energy sector increased slightly. For the week ending June 27, West Texas Intermediate (WTI) crude oil averaged \$66.78 per barrel and North Sea Brent averaged \$69.96 per barrel, decreasing 4.3% and 5.9% respectively over the last quarter. The Henry Hub natural gas spot price averaged \$3.03 per million Btu for the week ending June 28, decreasing 1.9% over the last three months. Over the last quarter, the total number of active drilling rigs in the United States fell by 2.8% and is 5.9% below year-ago levels. U.S. crude oil production rose slightly by 1.9% compared to three months ago. U.S. crude oil and petroleum products exports fell by 0.8% in the last quarter and imports fell by 1.2%. Global demand for petroleum increased 1.0% and global petroleum production increased by 0.6%.

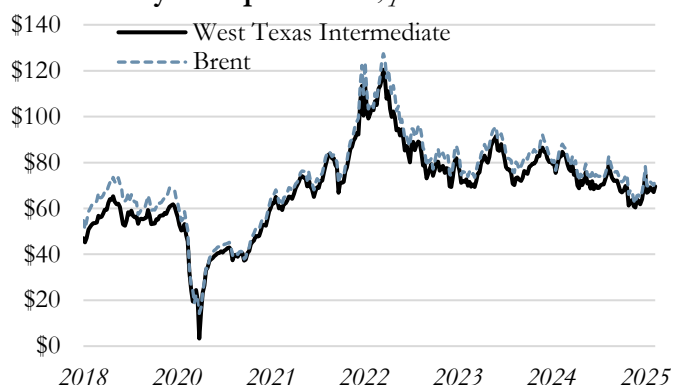
This databook provides current economic indicators to help monitor trends and allow comparison of past information. These indicators include: oil and natural gas prices; global petroleum production and demand; U.S. oil production and petroleum demand; U.S. crude oil stocks; OECD petroleum stocks; U.S. oil imports; U.S. oil exports; oil and gas drilling rig counts; and U.S. natural gas production. These indicators can be found on the following pages.



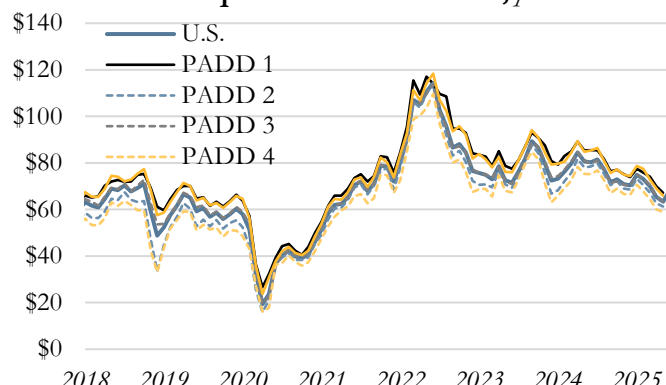
The Federal Reserve Bank of Kansas City's headquarters is located at 1 Memorial Drive in the heart of Kansas City, Missouri. The Federal Reserve Bank of Kansas City serves the Tenth Federal Reserve District, which includes Colorado, Kansas, western Missouri, Nebraska, northern New Mexico, Oklahoma and Wyoming. There are three branches across the Tenth Federal Reserve District located in Denver, Oklahoma City, and Omaha.

Weekly data through June 27, 2025

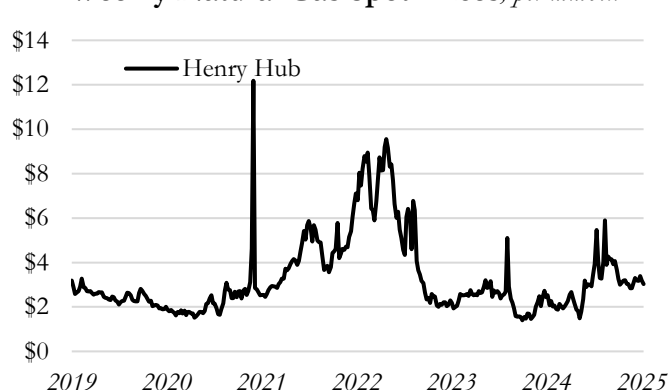
Weekly Oil Spot Prices, per barrel



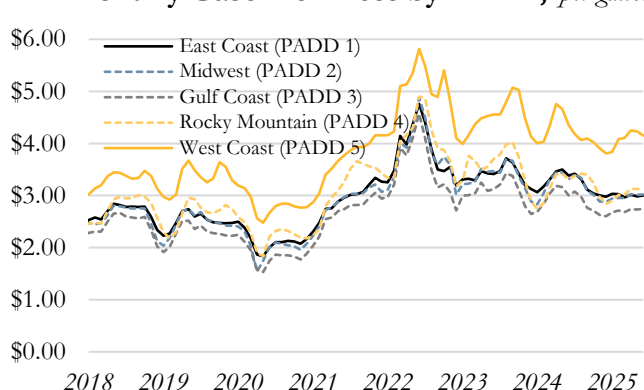
Refiner Acquisition Cost of Oil\*, per barrel



Weekly Natural Gas Spot Prices, per mmbtu



Monthly Gasoline Prices by PADD, per gallon



Weekly Spot Prices, Change from

Weekly Spot Prices	Current 6/27/25	1 Week Ago	1 Month Ago	3 Months Ago	6 Months Ago	1 Year Ago
West Texas Intermediate	\$66.78	-\$8.16	\$4.96	-\$3.03	-\$3.73	-\$15.75
Brent	\$69.96	-\$8.29	\$5.22	-\$4.39	-\$3.17	-\$16.76
Henry Hub	\$3.03	-\$0.16	-\$0.16	-\$0.06	-\$0.28	\$1.13

Monthly Gasoline Spot Prices, Change from

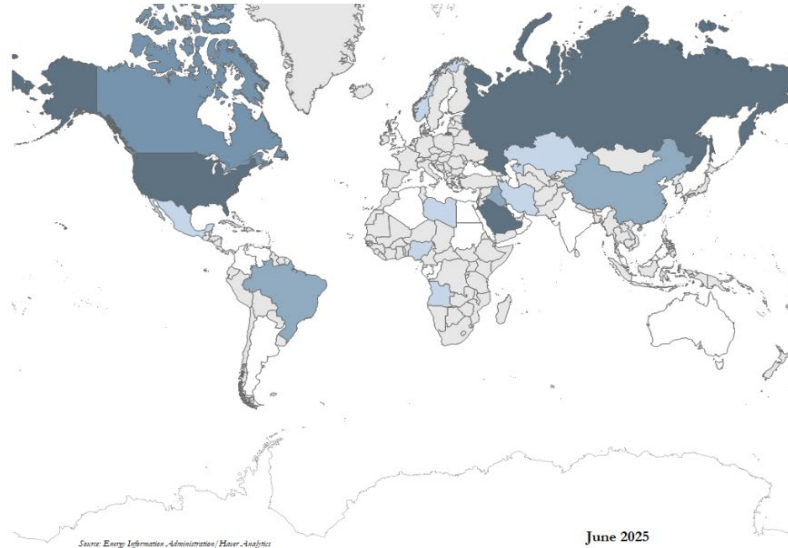
Geographic Area	Current Jun-25	1 Month Ago	3 Months Ago	6 Months Ago	1 Year Ago
East Coast (PADD 1)	\$3.00	\$0.02	\$0.04	\$0.03	-\$0.38
Midwest (PADD 2)	\$3.02	\$0.01	\$0.07	\$0.14	-\$0.29
Gulf Coast (PADD 3)	\$2.75	\$0.02	\$0.06	\$0.15	-\$0.25
Rocky Mountain (PADD 4)	\$3.14	\$0.01	\$0.12	\$0.30	-\$0.17
West Coast (PADD 5)	\$4.15	-\$0.08	\$0.04	\$0.35	-\$0.20

\*The cost of crude oil, including transportation and other fees paid by the refiner.

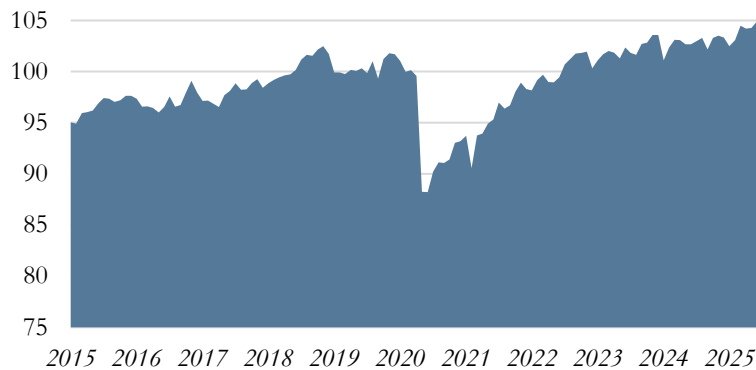
Source: U.S. Department of Energy, Energy Information Administration/Haver Analytics

## June 2025 Global Petroleum Production

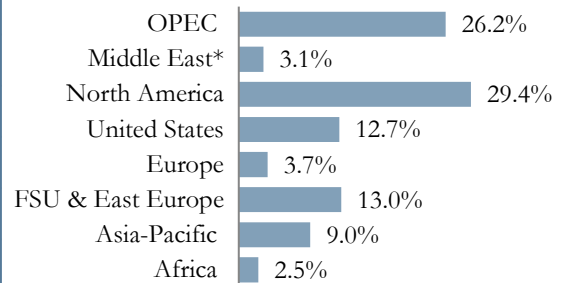
Million barrels per day



## Monthly Global Petroleum Production, million barrels per day

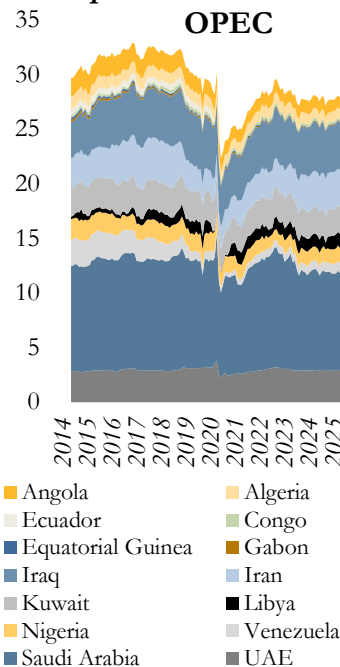


## Regional Share of Production

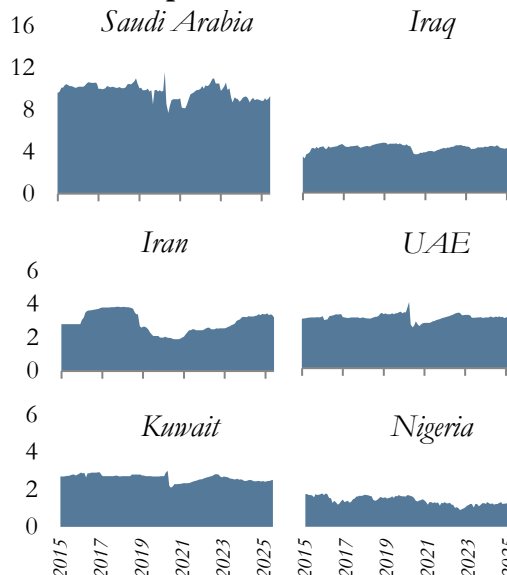


\*Excludes OPEC

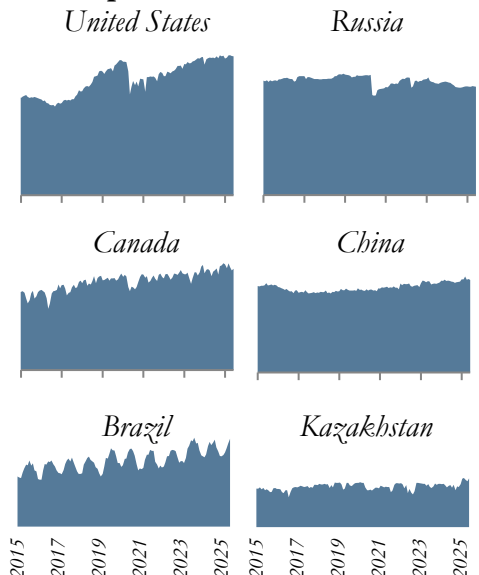
## Top Crude Oil Producers, million barrels per day



## Top OPEC Producers



## Top Non-OPEC Producers



Note: OPEC country production values are for crude oil and non-OPEC country data is for petroleum production.

Source: U.S. Department of Energy, Energy Information Administration/Haver Analytics

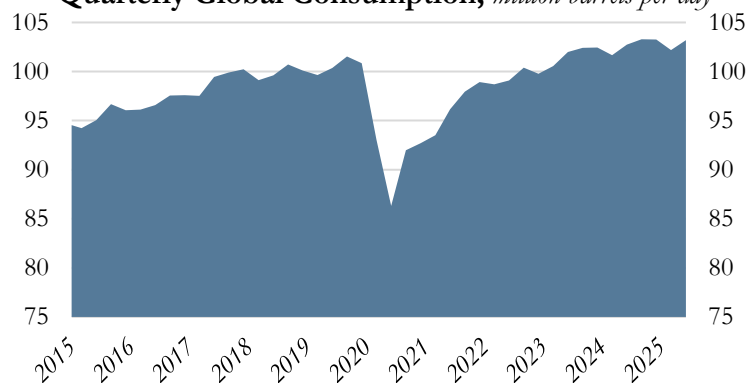
## Second Quarter 2025 Global Petroleum Consumption

Million barrels per day



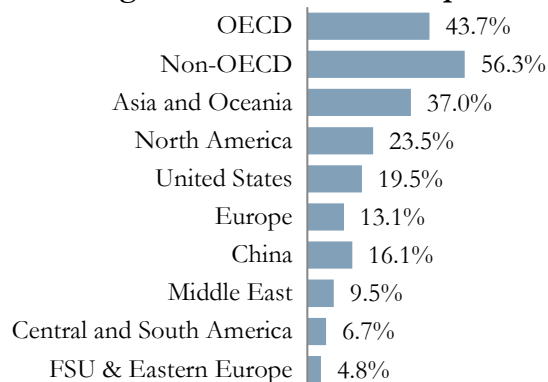
Source: Energy Information Administration/Haver Analytics

## Quarterly Global Consumption, million barrels per day

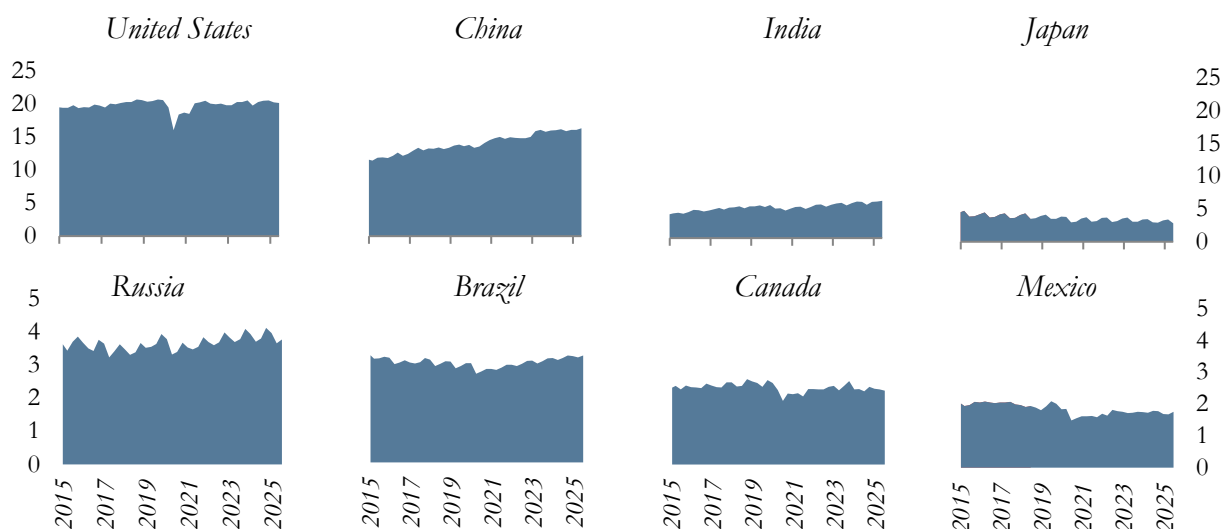


Second Quarter 2025

## Regional Share of Consumption

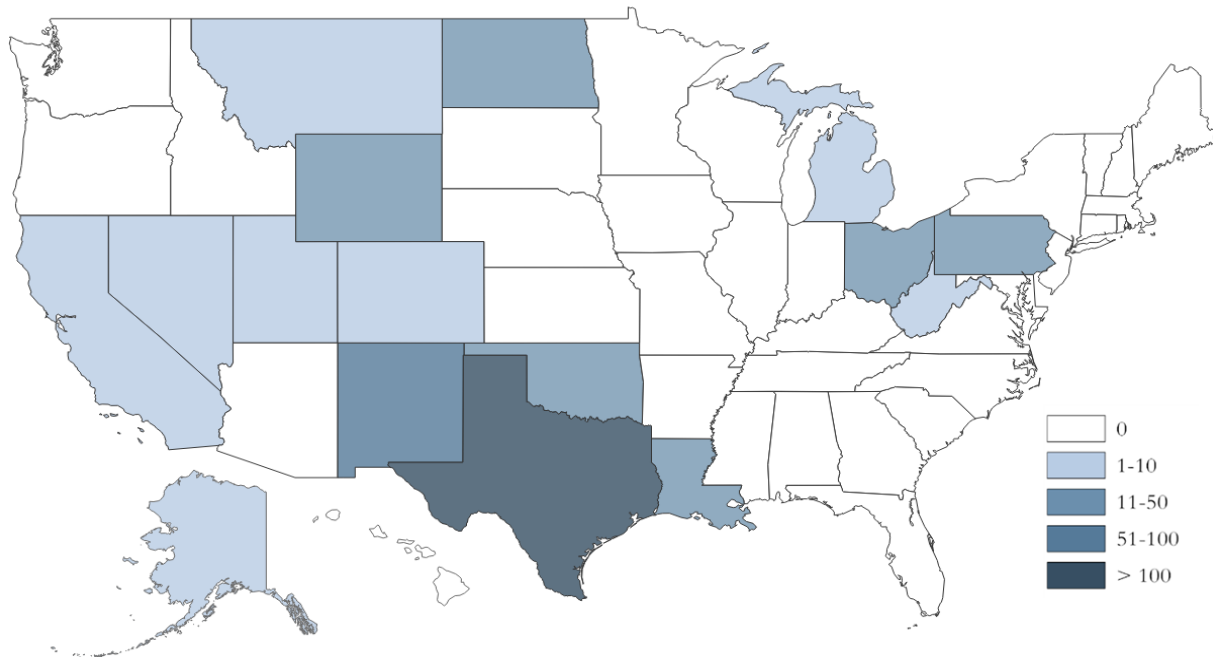


## Top Petroleum Consumers, million barrels per day



Source: U.S. Department of Energy, Energy Information Administration/Haver Analytics

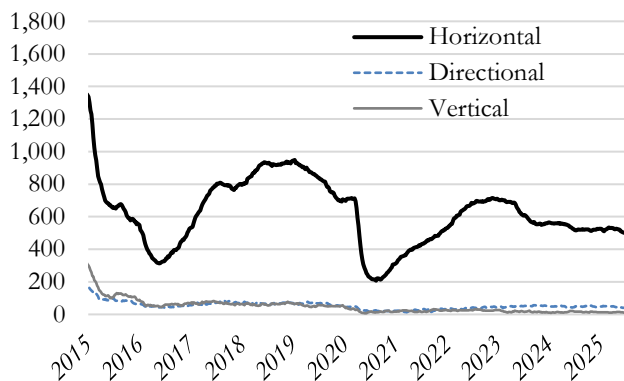
## June 2025 Weekly Active Oil &amp; Gas Drilling Rig Counts



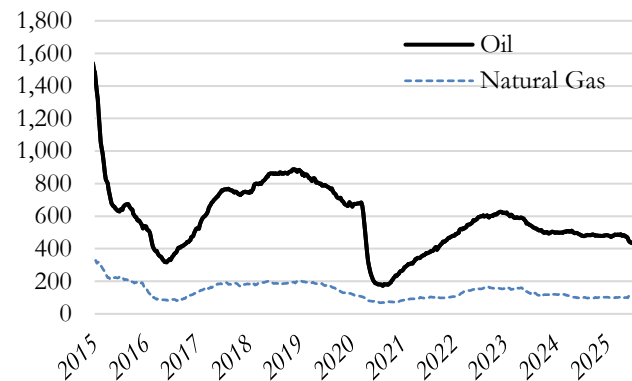
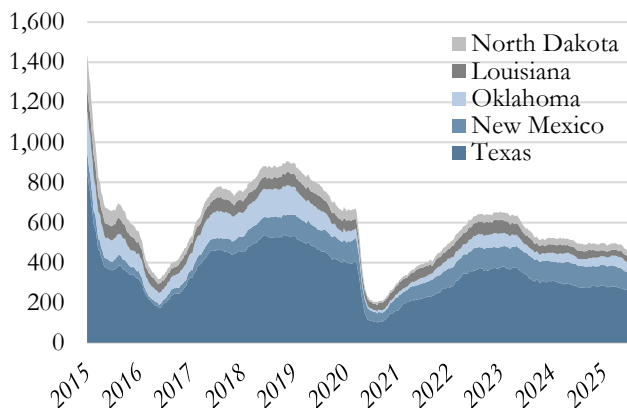
Source: Baker Hughes/Haver Analytics

June 27, 2025

## U.S. Active Drilling Rigs by Trajectory



## U.S. Active Drilling Rigs by Type

Top Five States for Drilling Activity  
(Total Active Rigs)

## Rig Count By Type

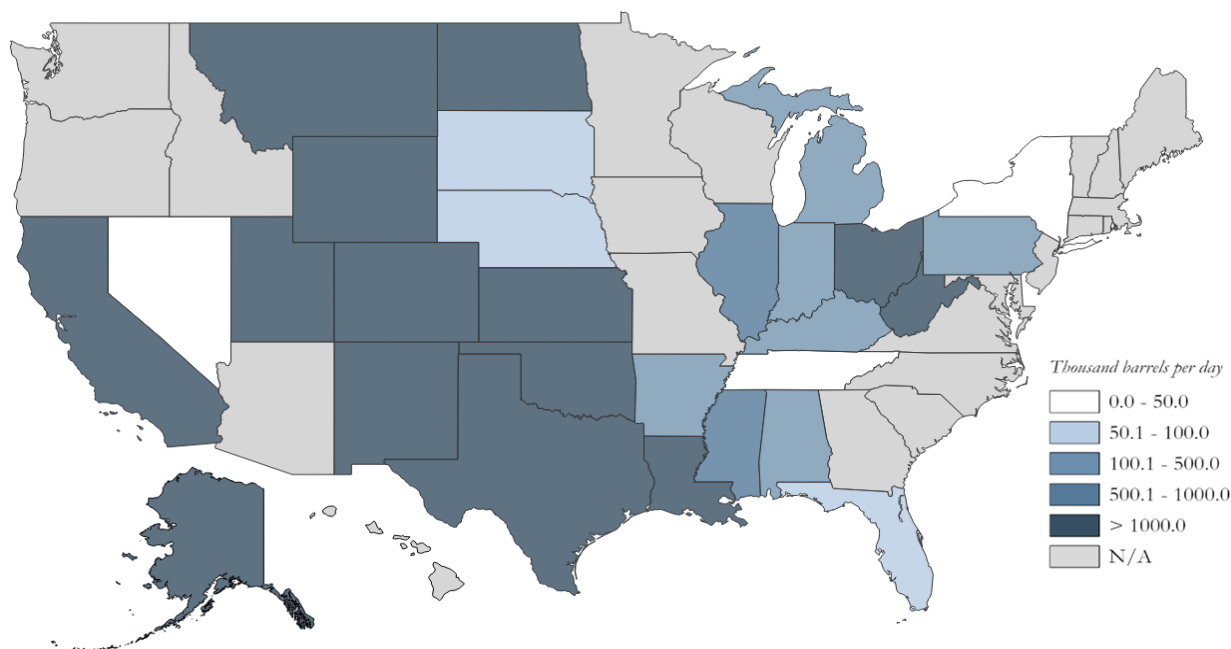
	Current	1 Month	3 Months	1 Year
Rig Type	Week	Ago	Ago	Ago
Oil	432	451	484	479
Gas	109	109	103	97
Misc	6	3	5	5
<b>Total</b>	<b>547</b>	<b>563</b>	<b>592</b>	<b>581</b>

## Rig Count By Type, Change from

	Current	1 Month	3 Months	1 Year
Rig Type	Week	Ago	Ago	Ago
Oil	-	-4.2%	-10.7%	-9.8%
Gas	-	0.0%	5.8%	12.4%
Misc	-	100.0%	20.0%	20.0%
<b>Total</b>	-	<b>-2.8%</b>	<b>-7.6%</b>	<b>-5.9%</b>

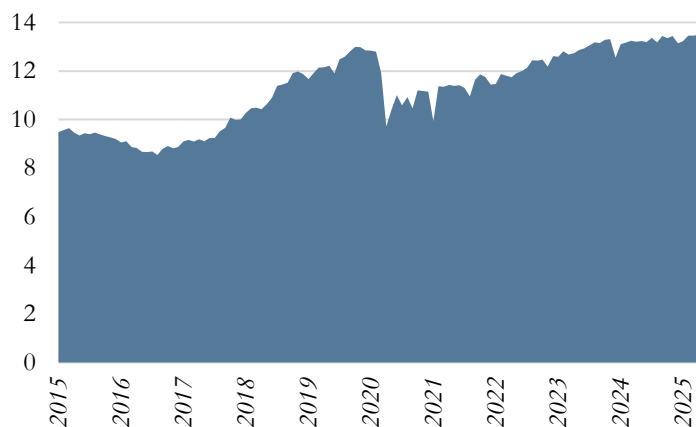
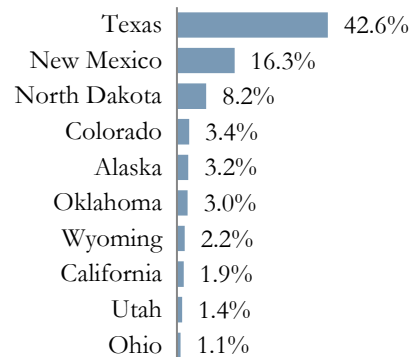
Source: Baker Hughes/Haver Analytics

## May 2025 U.S. Crude Oil Production



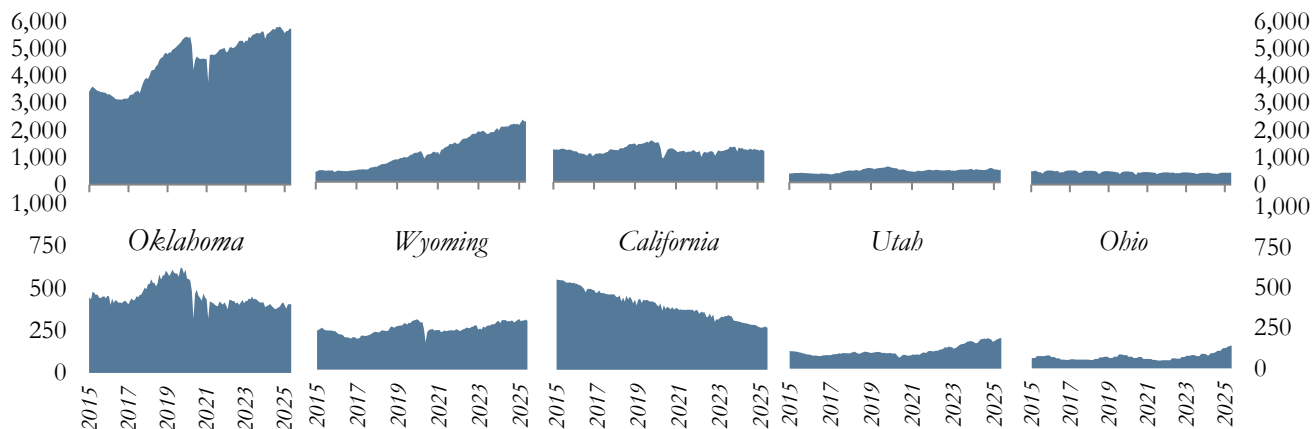
Source: Energy Information Administration/Haver Analytics

## Monthly U.S. Production, million barrels per day

May 2025  
Share of Production

## Top Producing States, thousand barrels per day

Texas      New Mexico      North Dakota      Colorado      Alaska



Source: U.S. Department of Energy, Energy Information Administration/Haver Analytics

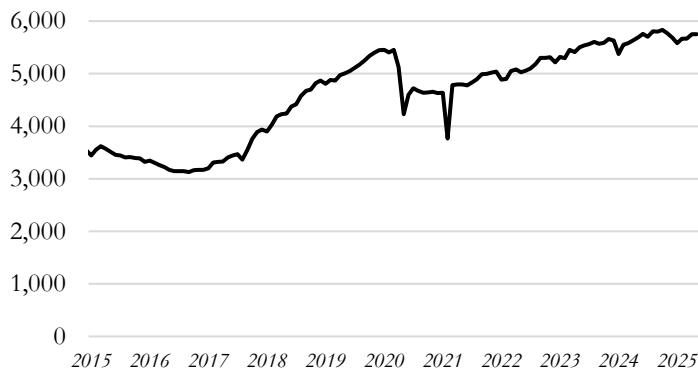
Data through May 2025

**United States**

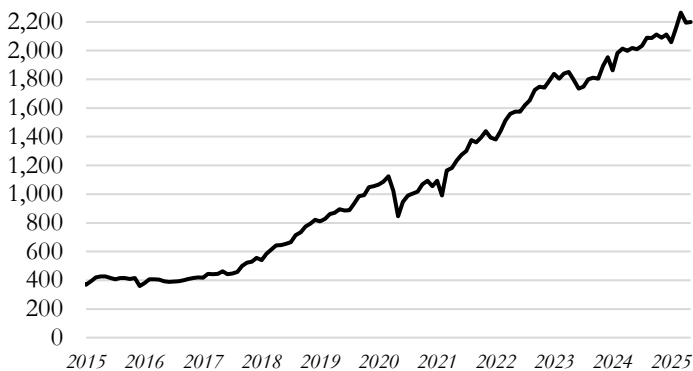
Thousand barrels per day



	<b>United States</b>	<i>Change from</i>
	<i>Thousand barrels per day</i>	
May-25	13,488	
Month Ago	13,464	0.2%
3 Months Ago	13,240	1.9%
6 Months Ago	13,352	1.0%
1 Year Ago	13,201	2.2%

**Texas**

	<b>Texas</b>	<i>Change from</i>
	<i>Thousand barrels per day</i>	
May-25	5,752	
Month Ago	5,751	0.0%
3 Months Ago	5,665	1.5%
6 Months Ago	5,768	-0.3%
1 Year Ago	5,688	1.1%
Share of U.S. Production	42.6%	

**New Mexico**

	<b>New Mexico</b>	<i>Change from</i>
	<i>Thousand barrels per day</i>	
May-25	2,199	
Month Ago	2,196	0.1%
3 Months Ago	2,156	2.0%
6 Months Ago	2,090	5.2%
1 Year Ago	2,019	8.9%
Share of U.S. Production	16.3%	

**North Dakota**

	<b>North Dakota</b>	<i>Change from</i>
	<i>Thousand barrels per day</i>	
May-25	1,111	
Month Ago	1,156	-3.9%
3 Months Ago	1,135	-2.2%
6 Months Ago	1,204	-7.8%
1 Year Ago	1,184	-6.2%
Share of U.S. Production	8.2%	

Source: U.S. Department of Energy, Energy Information Administration/Haver Analytics

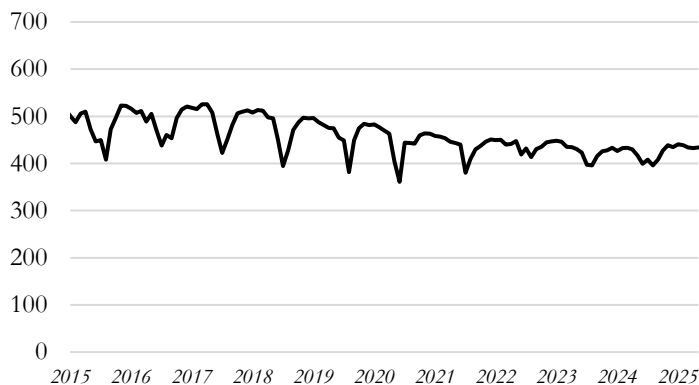
Data through May 2025

**Colorado**

Thousand barrels per day



	<b>Colorado</b>	<i>Change from</i>
<i>Thousand barrels per day</i>		
May-25	465	
Month Ago	449	3.7%
3 Months Ago	467	-0.4%
6 Months Ago	522	-10.8%
1 Year Ago	453	2.7%
Share of U.S. Production	3.4%	

**Alaska**

	<b>Alaska</b>	<i>Change from</i>
<i>Thousand barrels per day</i>		
May-25	434	
Month Ago	433	0.4%
3 Months Ago	438	-1.0%
6 Months Ago	439	-1.1%
1 Year Ago	417	4.1%
Share of U.S. Production	3.2%	

**Oklahoma**

	<b>Oklahoma</b>	<i>Change from</i>
<i>Thousand barrels per day</i>		
May-25	406	
Month Ago	406	-0.1%
3 Months Ago	380	6.8%
6 Months Ago	411	-1.2%
1 Year Ago	396	2.5%
Share of U.S. Production	3.0%	

**Wyoming**

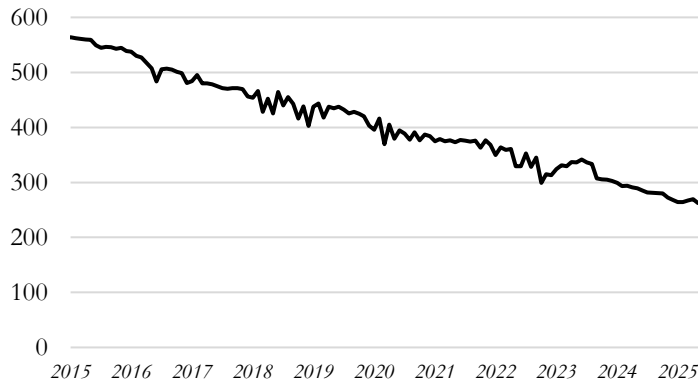
	<b>Wyoming</b>	<i>Change from</i>
<i>Thousand barrels per day</i>		
May-25	291	
Month Ago	299	-2.5%
3 Months Ago	293	-0.6%
6 Months Ago	296	-1.5%
1 Year Ago	290	0.4%
Share of U.S. Production	2.2%	

Source: U.S. Department of Energy, Energy Information Administration/Haver Analytics

Data through May 2025

**California**

Thousand barrels per day



	<b>California</b>	<i>Change from</i>
<i>Thousand barrels per day</i>		
May-25	262	
Month Ago	270	-2.7%
3 Months Ago	264	-0.7%
6 Months Ago	272	-3.7%
1 Year Ago	289	-9.3%
Share of U.S. Production	1.9%	

**Utah**

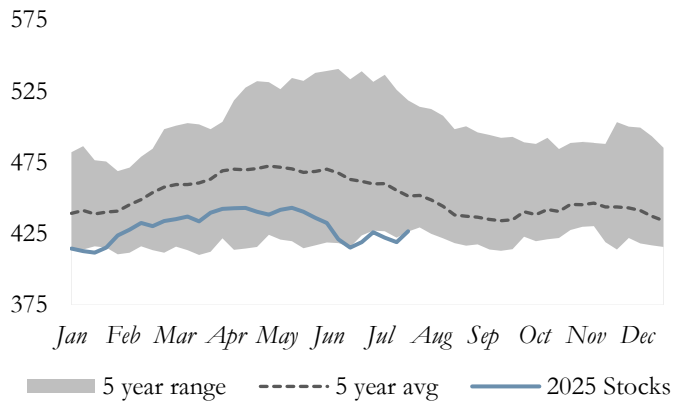
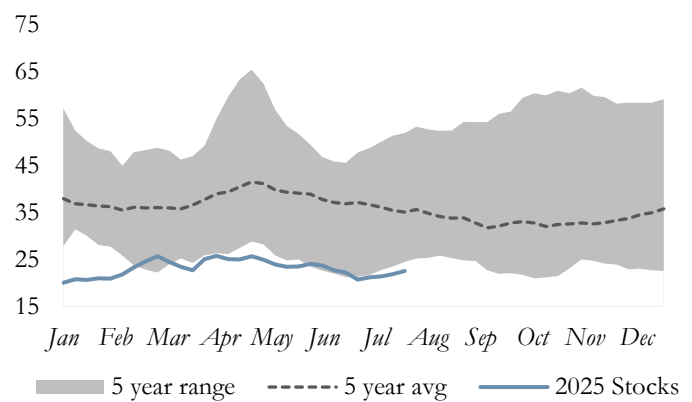
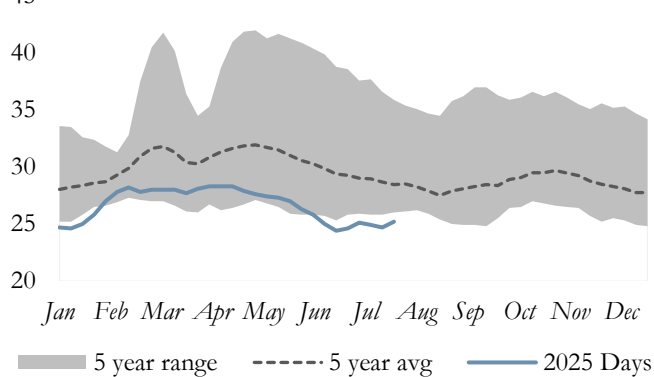
	<b>Utah</b>	<i>Change from</i>
<i>Thousand barrels per day</i>		
May-25	194	
Month Ago	192	0.8%
3 Months Ago	182	6.4%
6 Months Ago	184	5.4%
1 Year Ago	187	3.7%
Share of U.S. Production	1.4%	

**Ohio**

	<b>Ohio</b>	<i>Change from</i>
<i>Thousand barrels per day</i>		
May-25	142	
Month Ago	139	2.2%
3 Months Ago	131	8.7%
6 Months Ago	121	17.8%
1 Year Ago	95	49.3%
Share of U.S. Production	1.1%	

Source: U.S. Department of Energy, Energy Information Administration/Haver Analytics

## June 2025 Weekly U.S. Crude Oil Stocks

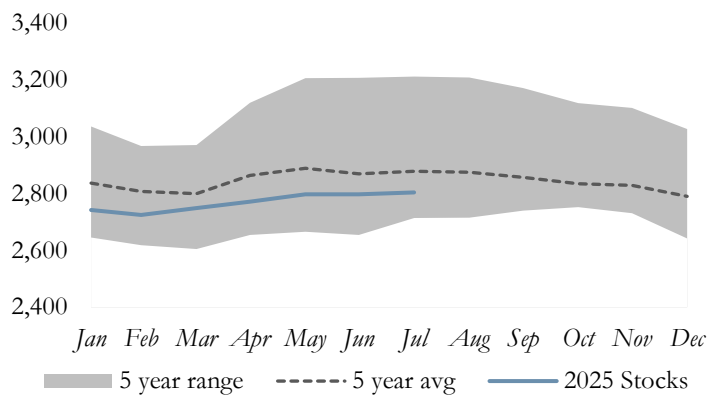
U.S. Oil Stocks, *million barrels\**Cushing, OK Oil Stocks, *million barrels*U.S. Oil Days of Supply, *days*

Crude Oil Stocks

	1 Week Ago	1 Year Ago
U.S.	0.9%	-6.6%
Cushing, OK	-6.7%	-39.5%
Days of Supply	0.8%	-7.9%
East Coast (PADD 1)	-2.1%	10.4%
Midwest (PADD 2)	0.7%	-11.3%
Gulf Coast (PADD 3)	2.2%	-8.6%
Rocky Mountain (PADD 4)	-1.8%	0.1%
West Coast (PADD 5)	-2.6%	11.0%

\*Stocks include those domestic and Customs-cleared foreign stocks held at, or in transit to, refineries and bulk terminals, and stocks in pipelines.

## June 2025 OECD Commercial Petroleum Inventory

OECD Commercial Petroleum Inventory, *million barrels*

Petroleum Stocks

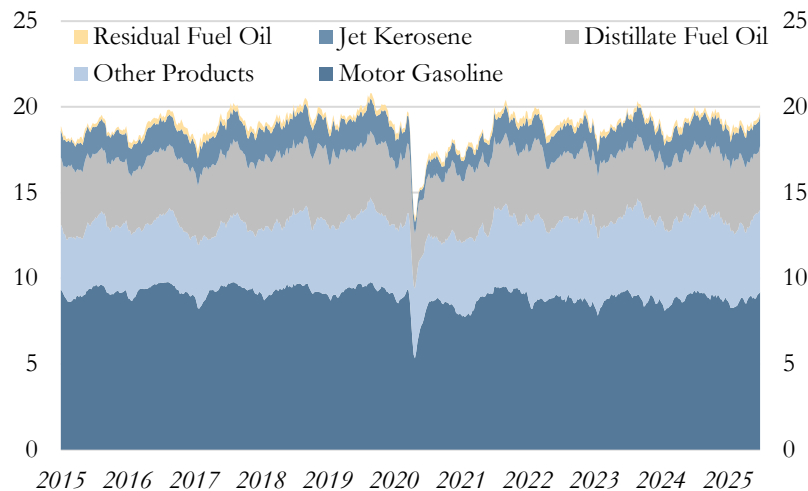
	Million Barrels	Change from
Current Month	2,803	
1 Month Ago	2,796	0.3%
3 Months Ago	2,771	1.2%
6 Months Ago	2,741	2.3%
1 Year Ago	2,817	-0.5%

Source: U.S. Department of Energy, Energy Information Administration/Haver Analytics

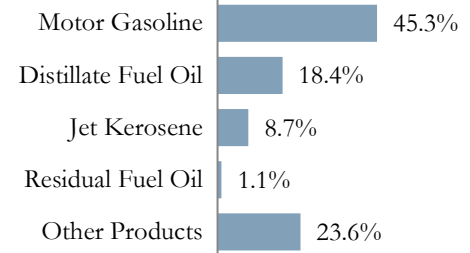
## June 2025 Weekly U.S. Demand for Petroleum Products

4-Week Averages

## All Petroleum Products, million barrels per day



## Share of Total Consumption



## U.S. Consumption by Product &amp; Percent Change

## U.S. Consumption by Product, thousand barrels per day

	Current 6/27/25	1 Month Ago	3 Months Ago	6 Months Ago	1 Year Ago
All Products	20,288	19,810	20,094	20,338	20,518
Motor Gasoline	9,199	8,788	8,784	8,728	9,205
Distillate Fuel Oil	3,740	3,558	3,806	3,858	3,719
Jet Kerosene	1,771	1,679	1,684	1,742	1,730
Residual Fuel Oil	227	233	354	248	228
Other Products	4,782	4,921	4,261	4,381	4,822

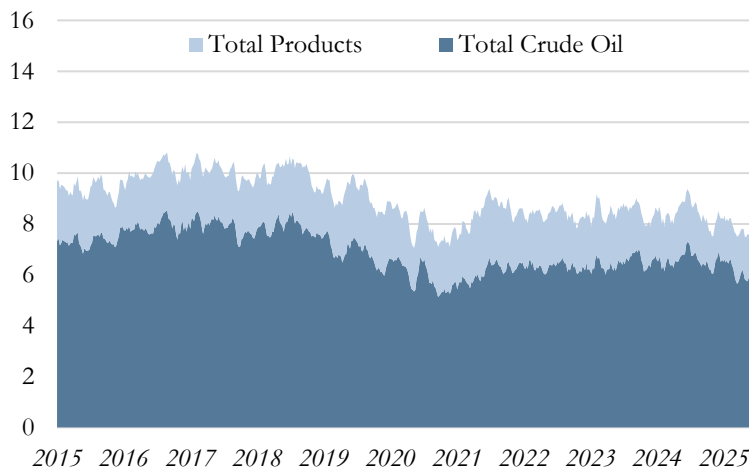
## U.S. Consumption by Product, Change from

	Current 6/27/25	1 Month Ago	3 Months Ago	6 Months Ago	1 Year Ago
All Products	-	2.4%	1.0%	-0.2%	-1.1%
Motor Gasoline	-	4.7%	4.7%	5.4%	-0.1%
Distillate Fuel Oil	-	5.1%	-1.7%	-3.1%	0.6%
Jet Kerosene	-	5.5%	5.2%	1.7%	2.4%
Residual Fuel Oil	-	-2.6%	-35.9%	-8.5%	-0.4%
Other Products	-	-2.8%	12.2%	9.2%	-0.8%

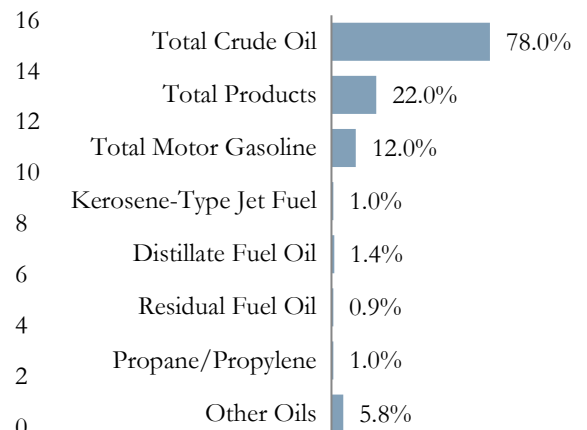
## June 2025 Weekly U.S. Imports of Crude Oil &amp; Petroleum Products

4-Week Averages

Imports, million barrels per day



Share of Total Imports



U.S. Imports by Product\*

Thousand barrels per day

	Current 6/27/25	1 Month Ago	3 Months Ago	6 Months Ago	1 Year Ago
<b>Total Crude Oil</b>	<b>6,136</b>	<b>6,157</b>	<b>5,879</b>	<b>6,507</b>	<b>7,129</b>
<b>Total Products</b>	<b>1,734</b>	<b>1,811</b>	<b>1,752</b>	<b>1,670</b>	<b>2,010</b>
Total Motor Gasoline	947	792	643	635	881
Kerosene-Type Jet Fuel	78	147	126	76	94
Distillate Fuel Oil	112	150	194	174	117
Residual Fuel Oil	68	81	93	115	80
Propane/Propylene	76	86	136	144	82
Other Oils	453	554	559	527	757
<b>Total Imports</b>	<b>7,870</b>	<b>7,968</b>	<b>7,631</b>	<b>8,177</b>	<b>9,139</b>

U.S. Imports by Product, Change from

	Current 6/27/25	1 Month Ago	3 Months Ago	6 Months Ago	1 Year Ago
<b>Total Crude Oil</b>	-	<b>-0.3%</b>	<b>4.4%</b>	<b>-5.7%</b>	<b>-13.9%</b>
<b>Total Products</b>	-	<b>-4.3%</b>	<b>-1.0%</b>	<b>3.8%</b>	<b>-13.7%</b>
Total Motor Gasoline	-	19.6%	47.3%	49.1%	7.5%
Kerosene-Type Jet Fuel	-	-46.9%	-38.1%	2.6%	-17.0%
Distillate Fuel Oil	-	-25.3%	-42.3%	-35.6%	-4.3%
Residual Fuel Oil	-	-16.0%	-26.9%	-40.9%	-15.0%
Propane/Propylene	-	-11.6%	-44.1%	-47.2%	-7.3%
Other Oils	-	-18.2%	-19.0%	-14.0%	-40.2%
<b>Total Imports</b>	-	<b>-1.2%</b>	<b>3.1%</b>	<b>-3.8%</b>	<b>-13.9%</b>

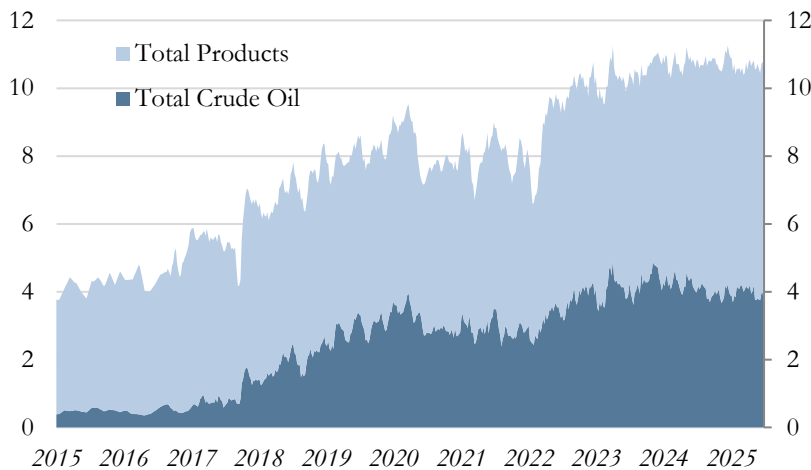
\*Totals may not sum due to component rounding

Source: U.S. Department of Energy, Energy Information Administration/Haver Analytics

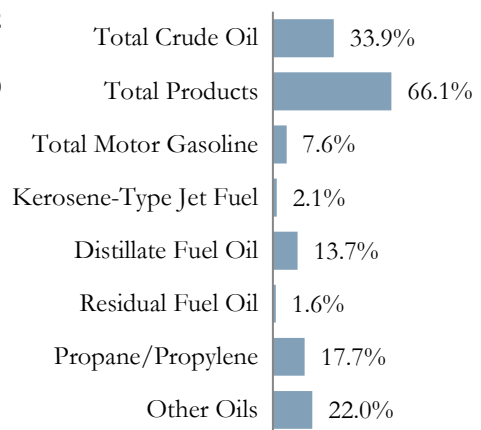
## June 2025 Weekly U.S. Exports of Crude Oil &amp; Petroleum Products

4-Week Averages

Exports, million barrels per day



Share of Total Exports



U.S. Exports by Product\*

Thousand barrels per day

	Current 6/27/25	1 Month Ago	3 Months Ago	6 Months Ago	1 Year Ago
<b>Total Crude Oil</b>	<b>3,556</b>	<b>3,771</b>	<b>4,106</b>	<b>3,893</b>	<b>3,979</b>
<b>Total Products</b>	<b>6,937</b>	<b>6,805</b>	<b>6,440</b>	<b>7,006</b>	<b>6,865</b>
Total Motor Gasoline	801	870	813	1,021	929
Kerosene-Type Jet Fuel	221	214	243	224	240
Distillate Fuel Oil	1,439	1,333	1,116	1,387	1,447
Residual Fuel Oil	172	173	80	131	153
Propane/Propylene	1,858	1,818	1,832	1,850	1,733
Other Oils	2,308	2,292	2,233	2,257	2,269
<b>Total Exports</b>	<b>10,493</b>	<b>10,576</b>	<b>10,546</b>	<b>10,899</b>	<b>10,844</b>

U.S. Exports by Product, Change from

	Current 6/27/25	1 Month Ago	3 Months Ago	6 Months Ago	1 Year Ago
<b>Total Crude Oil</b>	-	<b>-5.7%</b>	<b>-13.4%</b>	<b>-8.7%</b>	<b>-10.6%</b>
<b>Total Products</b>	-	<b>1.9%</b>	<b>7.7%</b>	<b>-1.0%</b>	<b>1.0%</b>
Total Motor Gasoline	-	-7.9%	-1.5%	-21.5%	-13.8%
Kerosene-Type Jet Fuel	-	3.3%	-9.1%	-1.3%	-7.9%
Distillate Fuel Oil	-	8.0%	28.9%	3.7%	-0.6%
Residual Fuel Oil	-	-0.6%	115.0%	31.3%	12.4%
Propane/Propylene	-	2.2%	1.4%	0.4%	7.2%
Other Oils	-	0.7%	3.4%	2.3%	1.7%
<b>Total Exports</b>	-	<b>-0.8%</b>	<b>-0.5%</b>	<b>-3.7%</b>	<b>-3.2%</b>

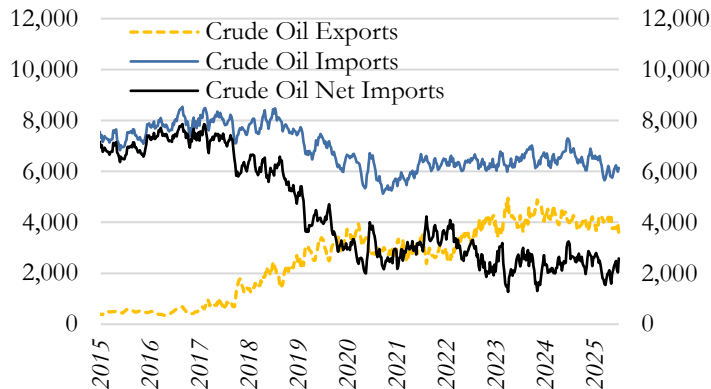
\*Totals may not sum due to rounding

Source: U.S. Department of Energy, Energy Information Administration/Haver Analytics

## June 2025 Weekly U.S. Net Imports of Crude Oil &amp; Petroleum Products

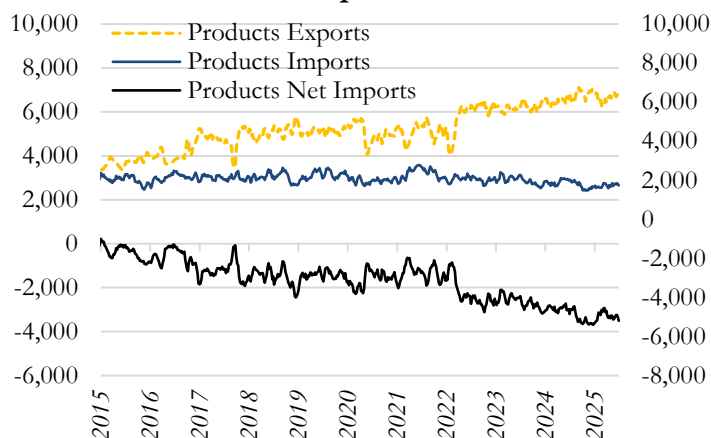
4-Week Averages, Thousand barrels per day

## Crude Oil Net Imports



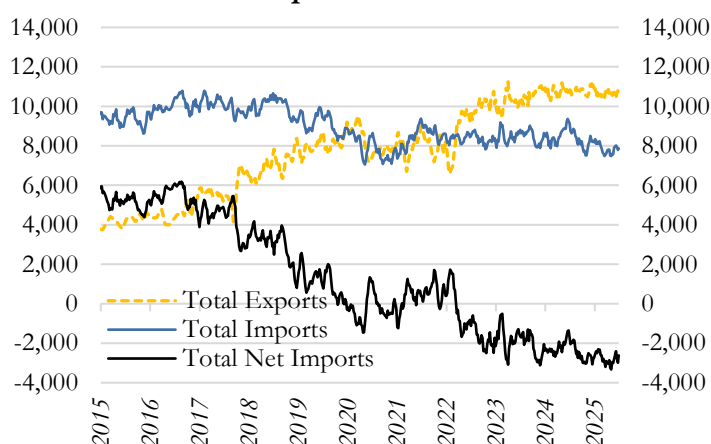
Crude Oil Net Imports		Change
Thousand barrels per day		from
6/27/25	2,580	
Month Ago	2,386	8.1%
3 Months Ago	1,773	45.5%
6 Months Ago	2,615	-1.3%
1 Year Ago	3,150	-18.1%

## Products Net Imports



Products Net Imports		Change
Thousand barrels per day		from
6/27/25	-5,203	
Month Ago	-4,994	-
3 Months Ago	-4,689	-
6 Months Ago	-5,336	-
1 Year Ago	-4,855	-

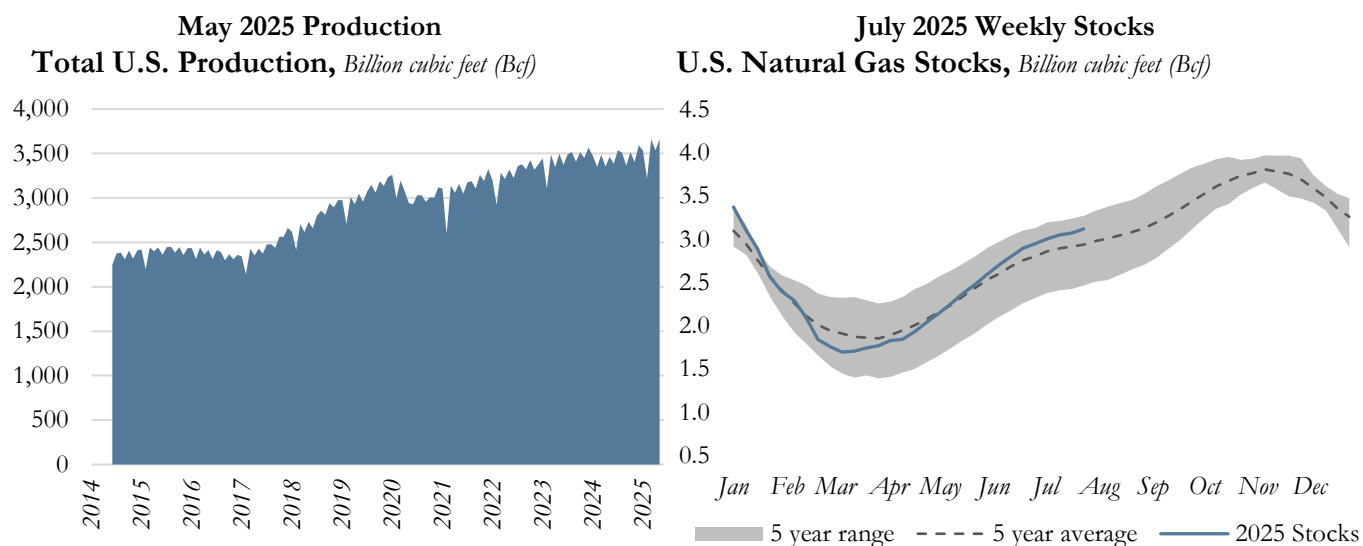
## Total Net Imports



Total Net Imports		Change
Thousand barrels per day		from
6/27/25	-2,623	
Month Ago	-2,608	-
3 Months Ago	-2,916	-
6 Months Ago	-2,721	-
1 Year Ago	-1,705	-

Source: U.S. Department of Energy, Energy Information Administration/Haver Analytics

## U.S. Natural Gas Production &amp; Stocks



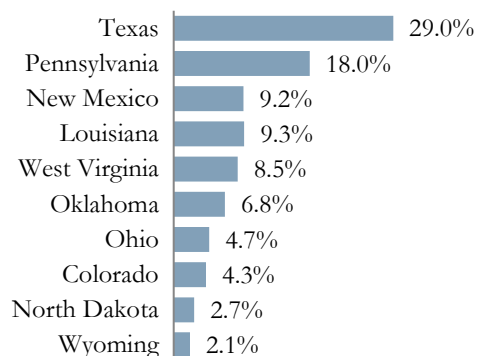
## U.S. Natural Gas, Billion cubic feet (Bcf)

	Current Period*	1 Month Ago	3 Months Ago	6 Months Ago	1 Year Ago
U.S. Production	3,661	3,535	3,218	3,404	3,461
U.S. Stocks	3,123	2,953	2,041	2,571	3,249

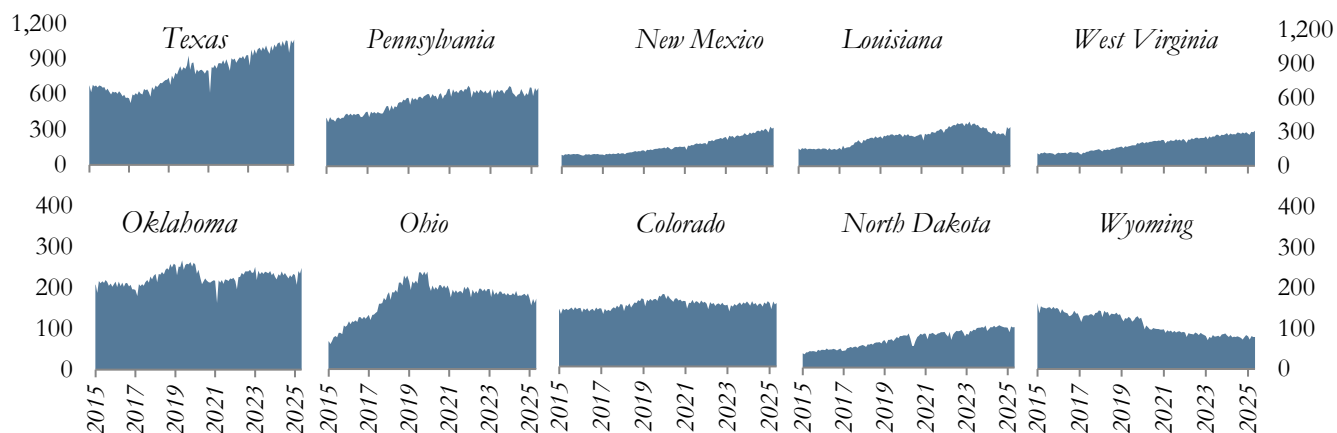
## U.S. Natural Gas, Change from

	Current Period*	1 Month Ago	3 Months Ago	6 Months Ago	1 Year Ago
U.S. Production	-	3.6%	13.8%	7.6%	5.8%
U.S. Stocks	-	5.8%	53.0%	21.5%	-3.9%

## Share of Production



## Top Producing States, Billion cubic feet (Bcf)



\*U.S. production is monthly data & stocks are weekly data

Source: U.S. Department of Energy, Energy Information Administration/Haver Analytics

*Definitions:*

West Texas Intermediate: A crude oil produced in Texas and southern Oklahoma which serves as a reference or "marker" for pricing a number of other crude streams and is traded in the domestic spot market at Cushing, Oklahoma.

Brent: A blended crude oil produced in the North Sea region which serves as a reference or "marker" for pricing a number of other international crude streams.

Petroleum products include unfinished oils, liquefied petroleum gases, pentanes plus, aviation gasoline, motor gasoline, naphtha-type jet fuel, kerosene-type jet fuel, kerosene, distillate fuel oil, residual fuel oil, petrochemical feedstocks, special naphthas, lubricants, waxes, petroleum coke, asphalt, road oil, still gas, and miscellaneous products.

Refined petroleum products include but are not limited to gasolines, kerosene, distillates (including No. 2 fuel oil), liquefied petroleum gas, asphalt, lubricating oils, diesel fuels, and residual fuels.

*Notes:*

Page 2: Petroleum Administration for Defense Districts (PADD) are geographic aggregations of the 50 states and the District of Columbia into five districts by the Petroleum Administration for Defense in 1950. These districts were originally defined during World War II for purposes of administering oil allocation. For more information, visit: <http://www.eia.gov/petroleum/supply/monthly/pdf/append.pdf>

Page 3: For OPEC countries and the U.S., only crude oil production data is used. For non-OPEC countries (excluding the U.S.) total petroleum production data is used. Total petroleum production includes production of crude oil (including lease condensates), natural gas plant liquids, biofuels, other liquids, and refinery processing gains.

Page 5: The active rig count is the number of rigs actively exploring for or developing oil or natural gas. Rig counts provide an indicator of new drilling activity and potential for expanded crude oil or natural gas production.

Pages 10: Crude oil stocks are stocks of crude oil and lease condensate held at refineries, in pipelines, at pipeline terminals, and on leases.

Crude oil stocks for Cushing include domestic and foreign crude oil stocks held in tank farms in Lincoln, Payne, and Creek counties in Oklahoma. Cushing, Oklahoma, is the designated delivery point for NYMEX crude oil futures contracts.

Days of supply are calculated by taking the current stock level and dividing by product supplied (used as an estimate of demand) averaged over the most recent four-week period. For crude oil, refinery inputs of crude oil are used as a proxy for demand.

*Notes:*

Page 11: Petroleum Consumption approximately represents consumption of petroleum products because it measures the disappearance of these products from primary sources, i.e., refineries, natural gas-processing plants, blending plants, pipelines, and bulk terminals.

**Data Revisions**

Most data are revised periodically to correct for errors and incorporate additional information as it becomes available. Data shown in this report are subject to change.

*Regional Economic Analysis*

Sign up to receive *The U.S. Energy Databook* and other publications each month via email using the link below:

<http://www.kansascityfed.org/ealert/>

For more analysis on the U.S. energy industry, read the latest release of *The Tenth District Energy Survey*.

<https://www.kansascityfed.org/research/indicatorsdata/energy>

*Additional Resources Available*

- Agricultural Surveys
- Manufacturing Survey
- Services Survey
- Energy Survey
- Regional Economic Analysis
- Speeches
- Banker Resources
- Economic Indicators
- Economic Research
- Educational Tools

Visit: [www.KansasCityFed.org](http://www.KansasCityFed.org)

Connect with the  
KANSAS CITY FED:

