

Maps of Kernel-Based Metropolitan Areas (KBMAAs)

“A Better Delineation of U.S. Metropolitan Areas: Supplemental Materials.” Jordan Rappaport and McKenzie Humann. 2025. Federal Reserve Bank of Kansas City. Mendeley Data, V1, doi: 10.17632/pg64w4hkjh.1 (<https://data.mendeley.com/datasets/pg64w4hkjh/1>)

“A Better Delineation of U.S. Metropolitan Areas.” Jordan Rappaport and McKenzie Humann. 2025. Federal Reserve Bank of Kansas City. Research Working Paper no. 25-01. doi: doi.org/10.18651/RWP2025-01 (Forthcoming, *Journal of Urban Economics*)

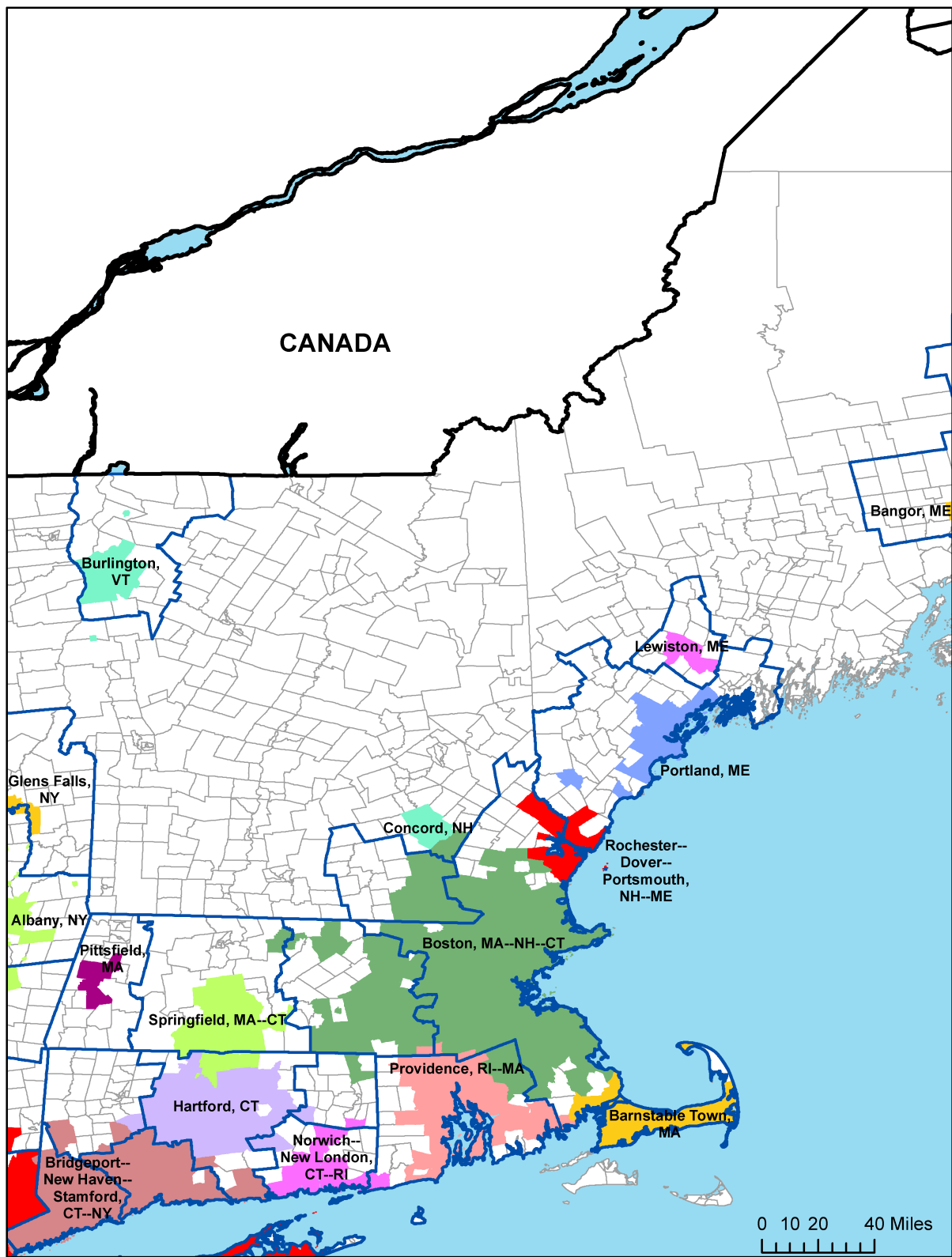
The paper broadly defines metropolitan areas as unions of built-up locations near each other with combined population of at least moderate scale and among which a significant share of residents and workers travel on a day-to-day basis between places of residence, places of employment, and places of consumption. A wide range of parameterizations of our delineation algorithm are arguably consistent with this broad definition.

Kernel-Based Metropolitan Areas (KBMAAs), our preferred parameterization, are likely to be appropriate for most questions and purposes. They balance encompassing commuting flows with excluding locations that are farther away or less densely settled.

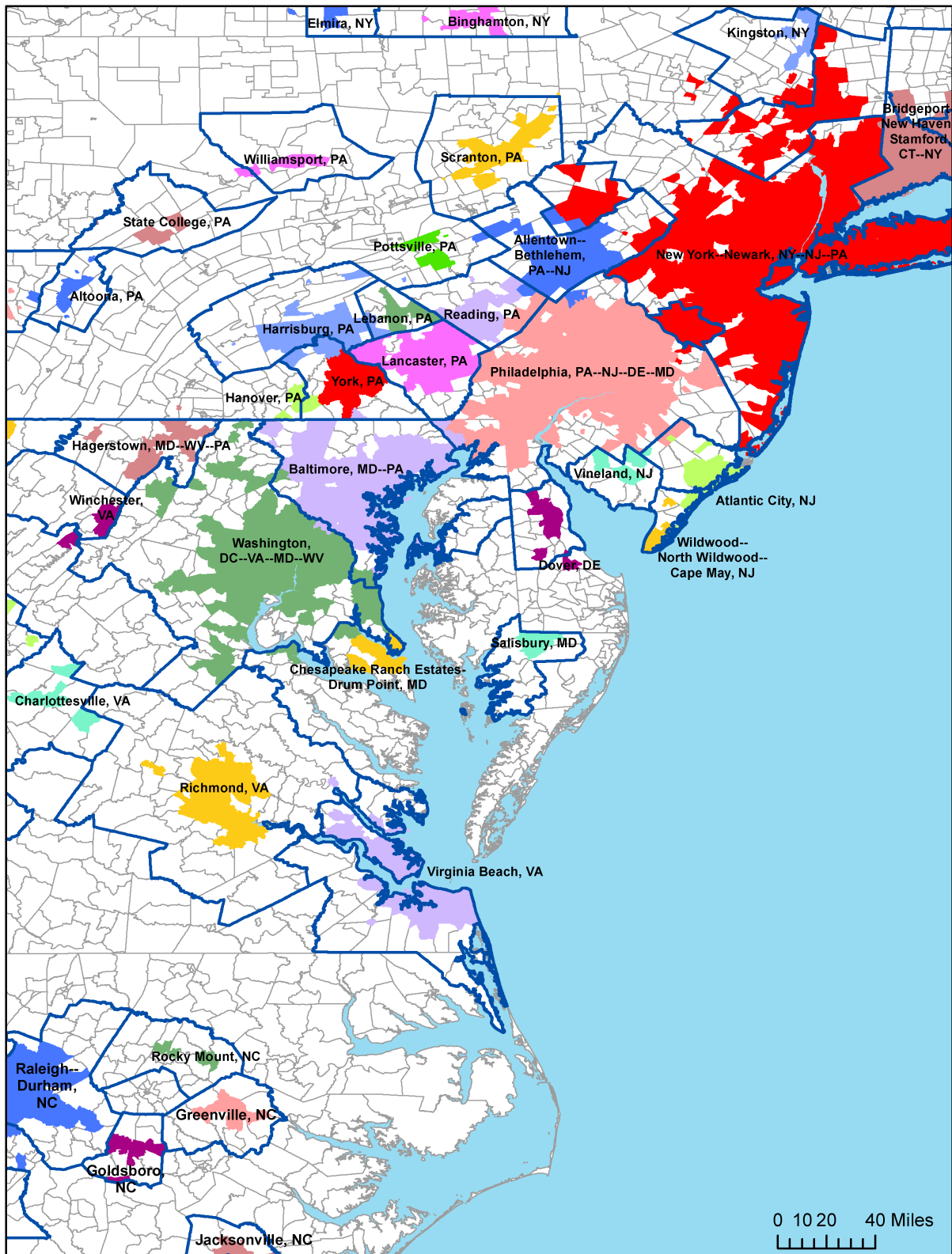
This file includes maps of KBMAAs, based on commuting flows in 2000, for each of the following regions:

1. New England
2. New York City to Virginia Beach
3. North and South Carolina
4. Louisville to Atlanta
5. Florida
6. Cleveland to Chicago
7. Minneapolis to Omaha
8. Saint Louis to Kansas City
9. Texas
10. Mountain States
11. Southern California
12. Northern California
13. Pacific Northwest

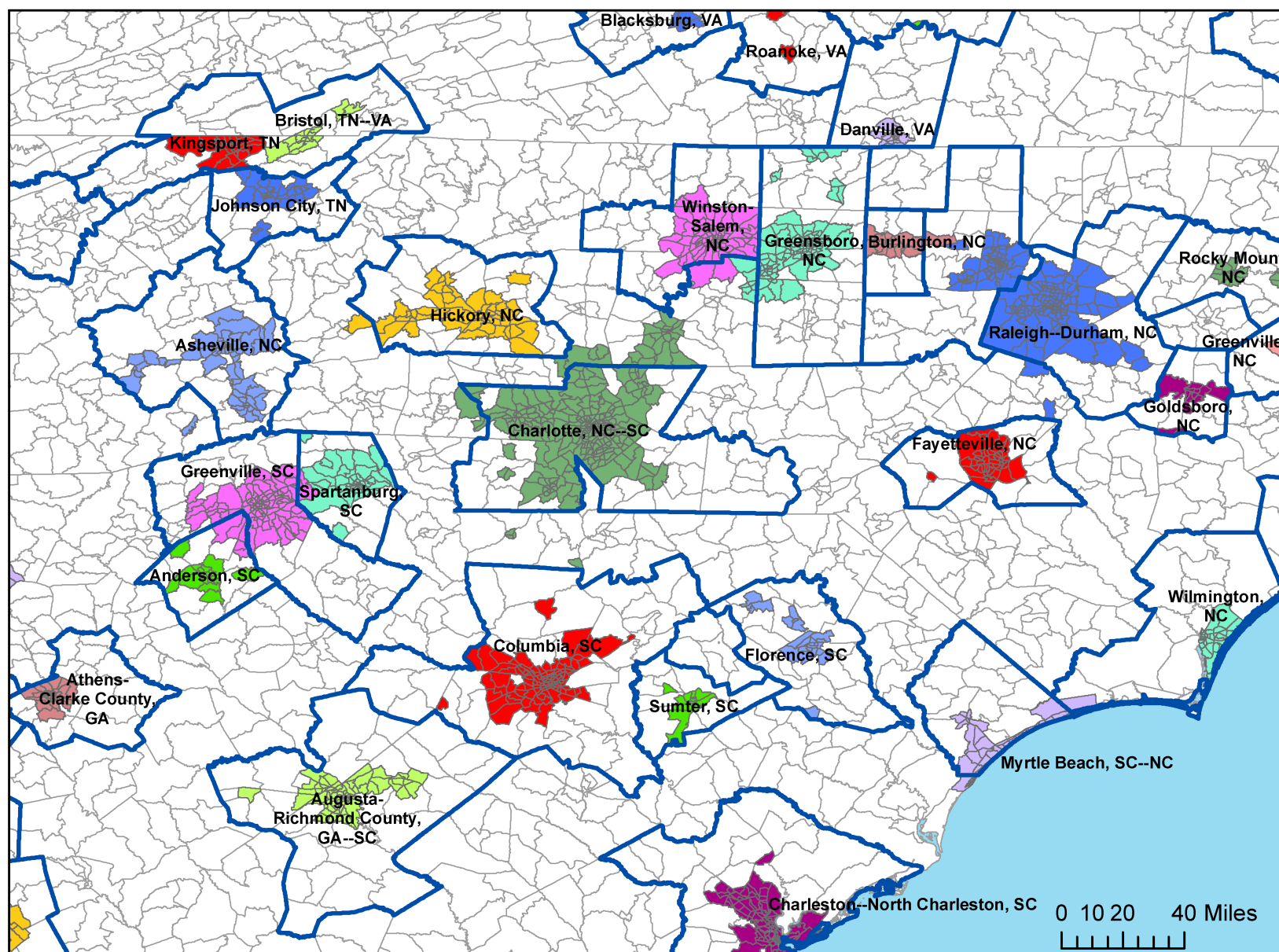
In addition to the archive of supplemental materials cited above, enumerations, maps, and workbooks for KBMAAs and two alternative benchmarks can be individually downloaded from the working paper’s [webpage](#).



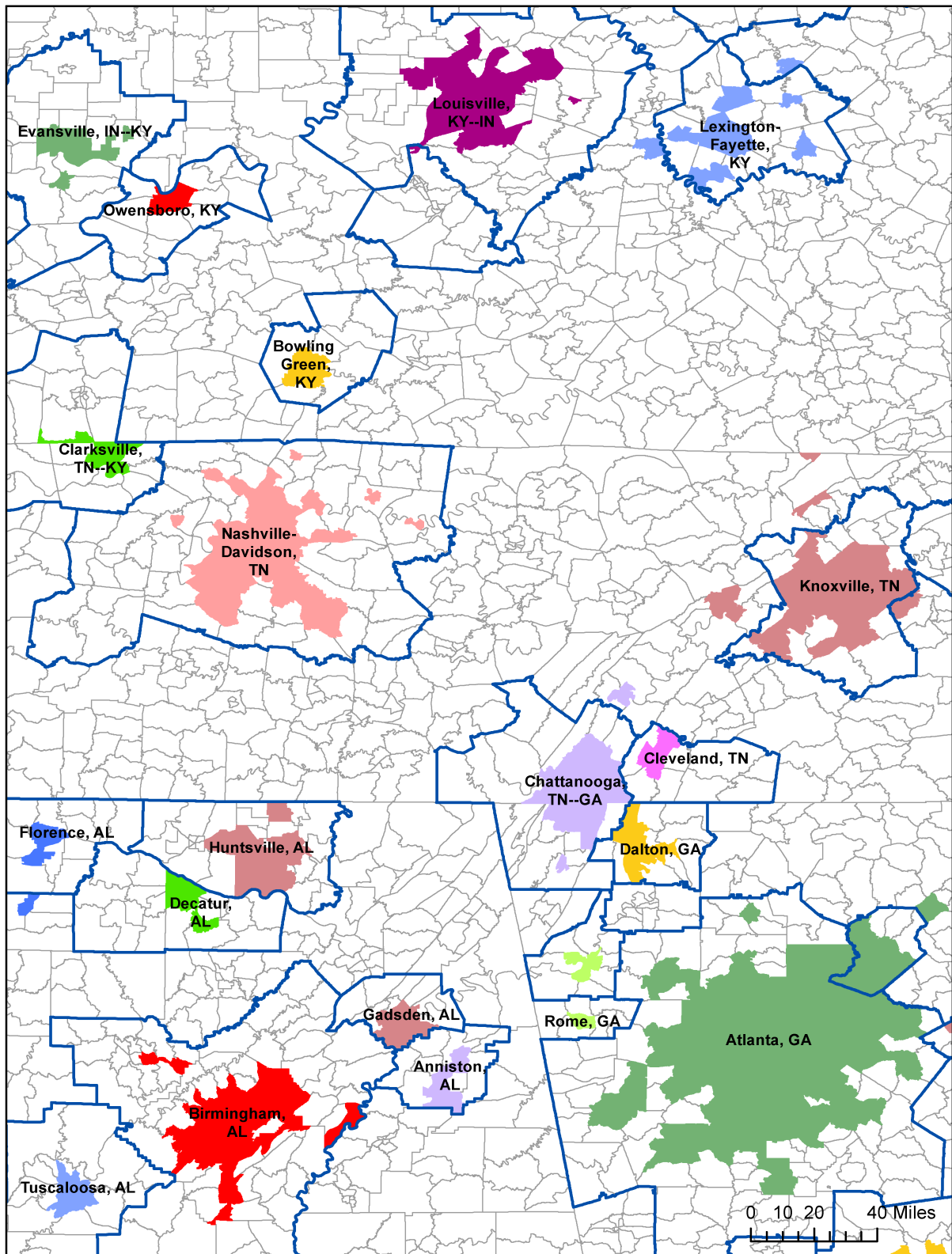
KBMAs in New England. Blue lines demarcate the borders of metropolitan CBSAs. Gray lines demarcate tract borders. Delineations are based on commuting flows in 2000.



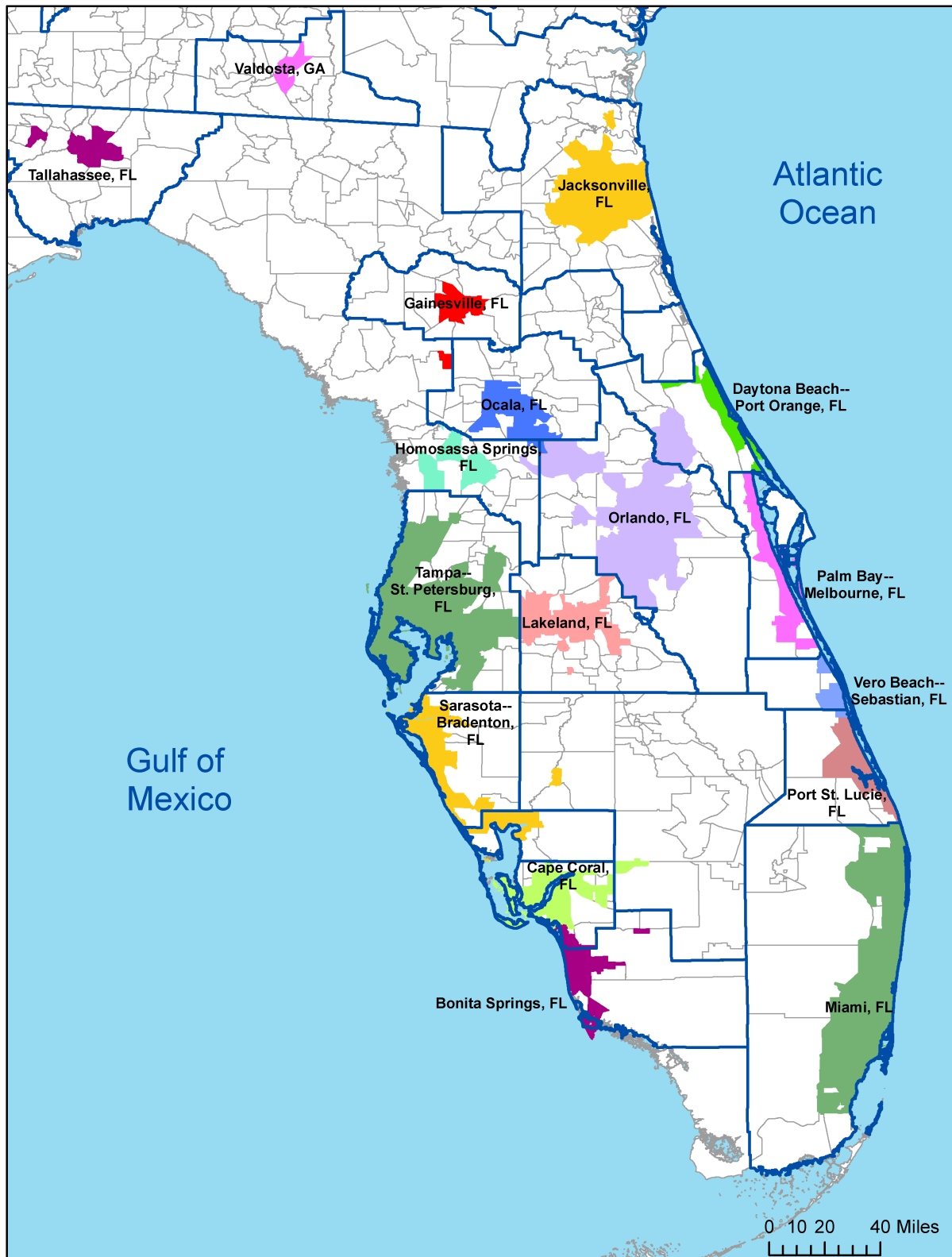
KBMAs from New York City to Virginia Beach. Blue lines demarcate the borders of metropolitan CBSAs. Gray lines demarcate tract borders. Delineations are based on commuting flows in 2000.



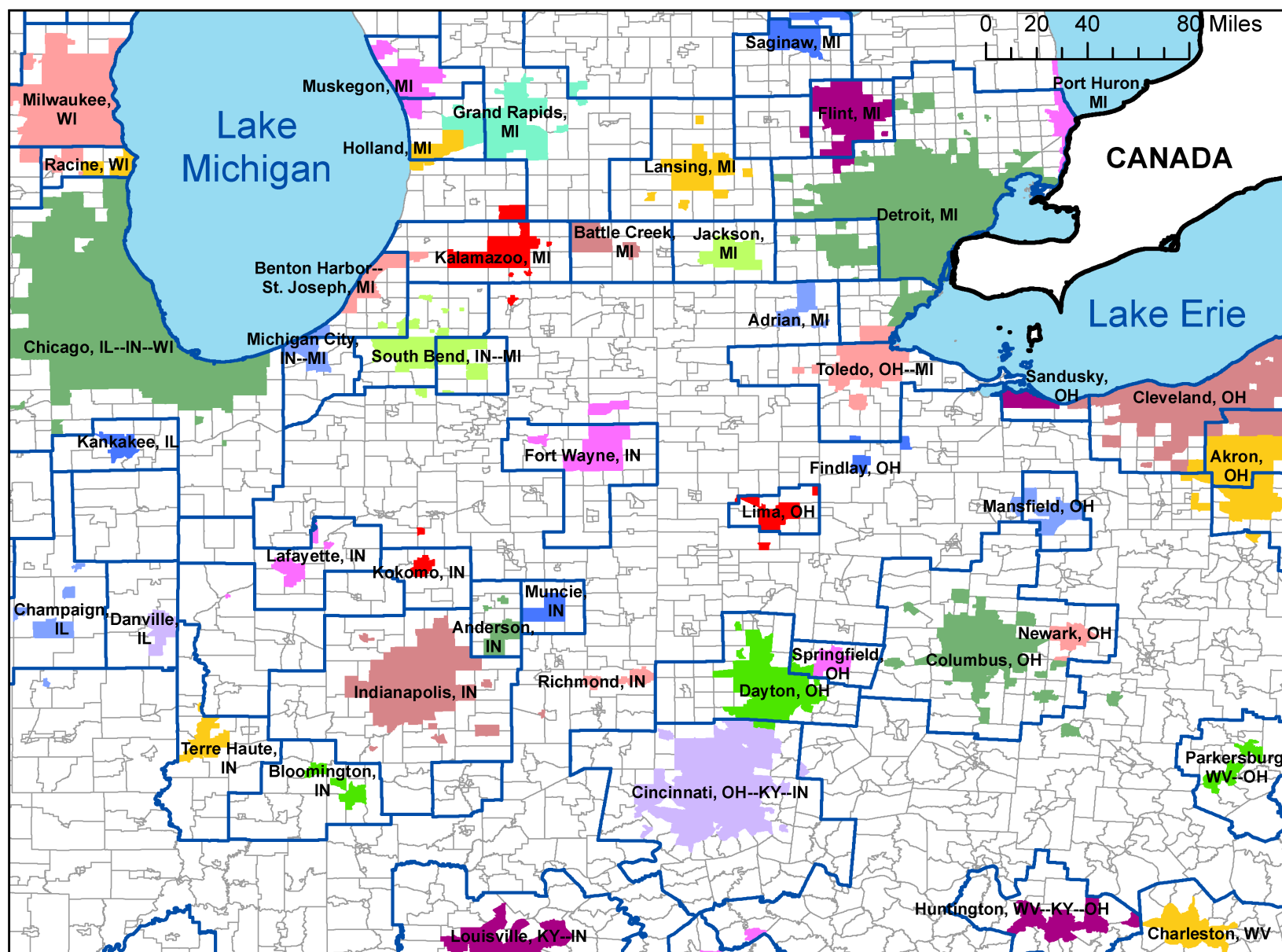
KBMAs in North and South Carolina. Blue lines demarcate the borders of metropolitan CBSAs. Gray lines demarcate tract borders. Delineations are based on commuting flows in 2000.



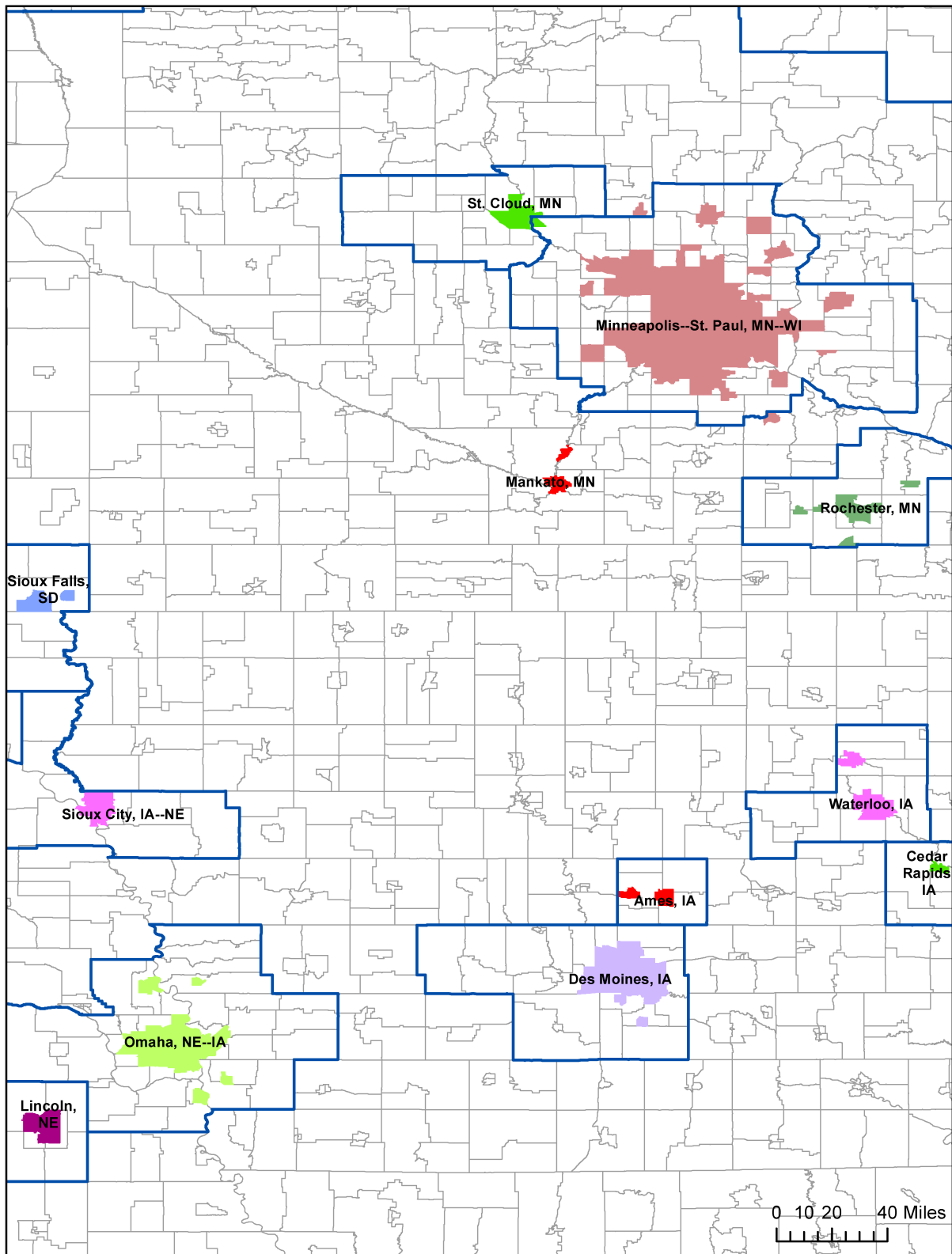
KBMAs from Louisville to Atlanta. Blue lines demarcate the borders of metropolitan CBSAs. Gray lines demarcate tract borders. Delineations are based on commuting flows in 2000.



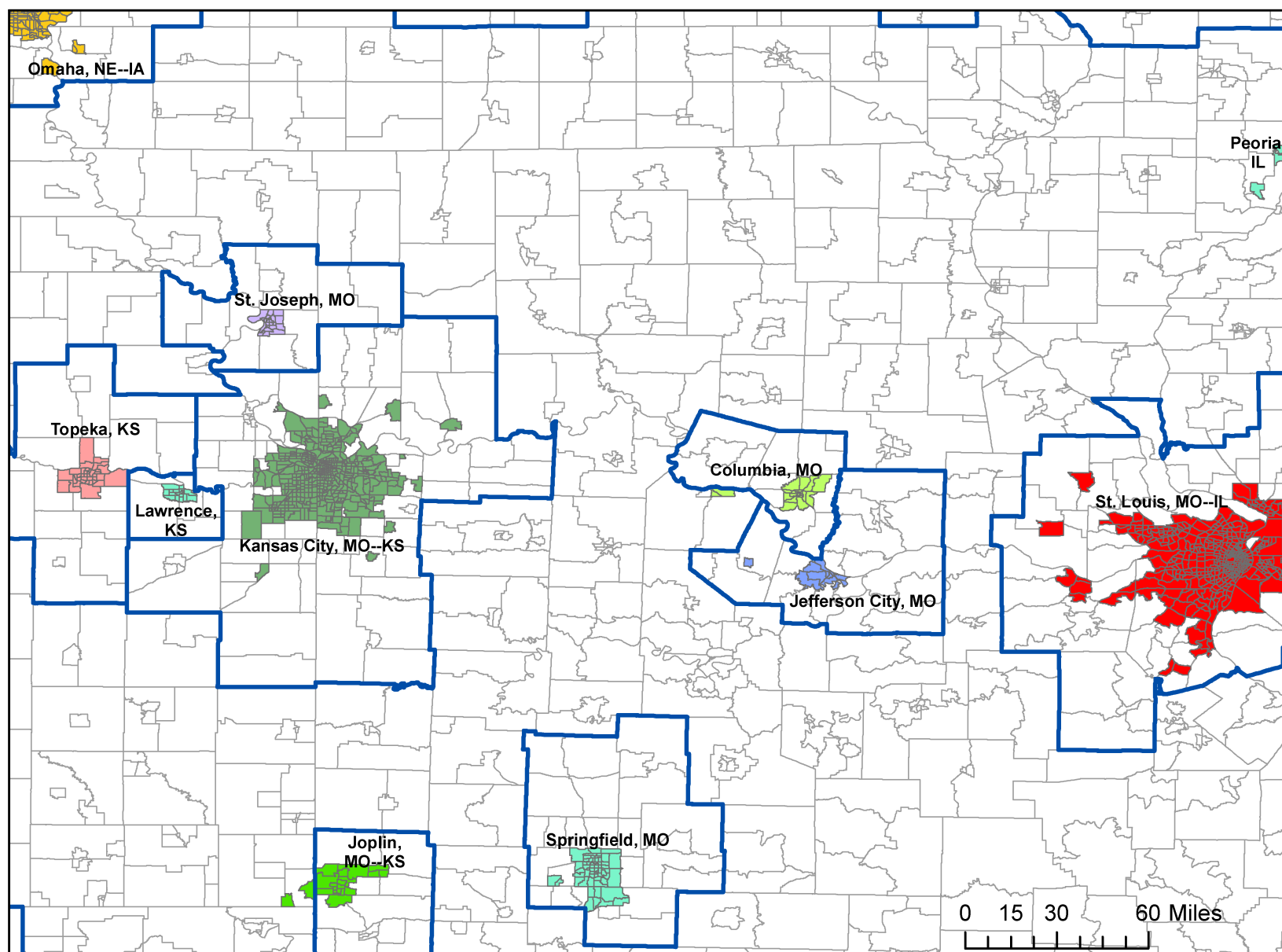
KBMAs in Florida. Blue lines demarcate the borders of metropolitan CBSAs. Gray lines demarcate tract borders. Delineations are based on commuting flows in 2000.



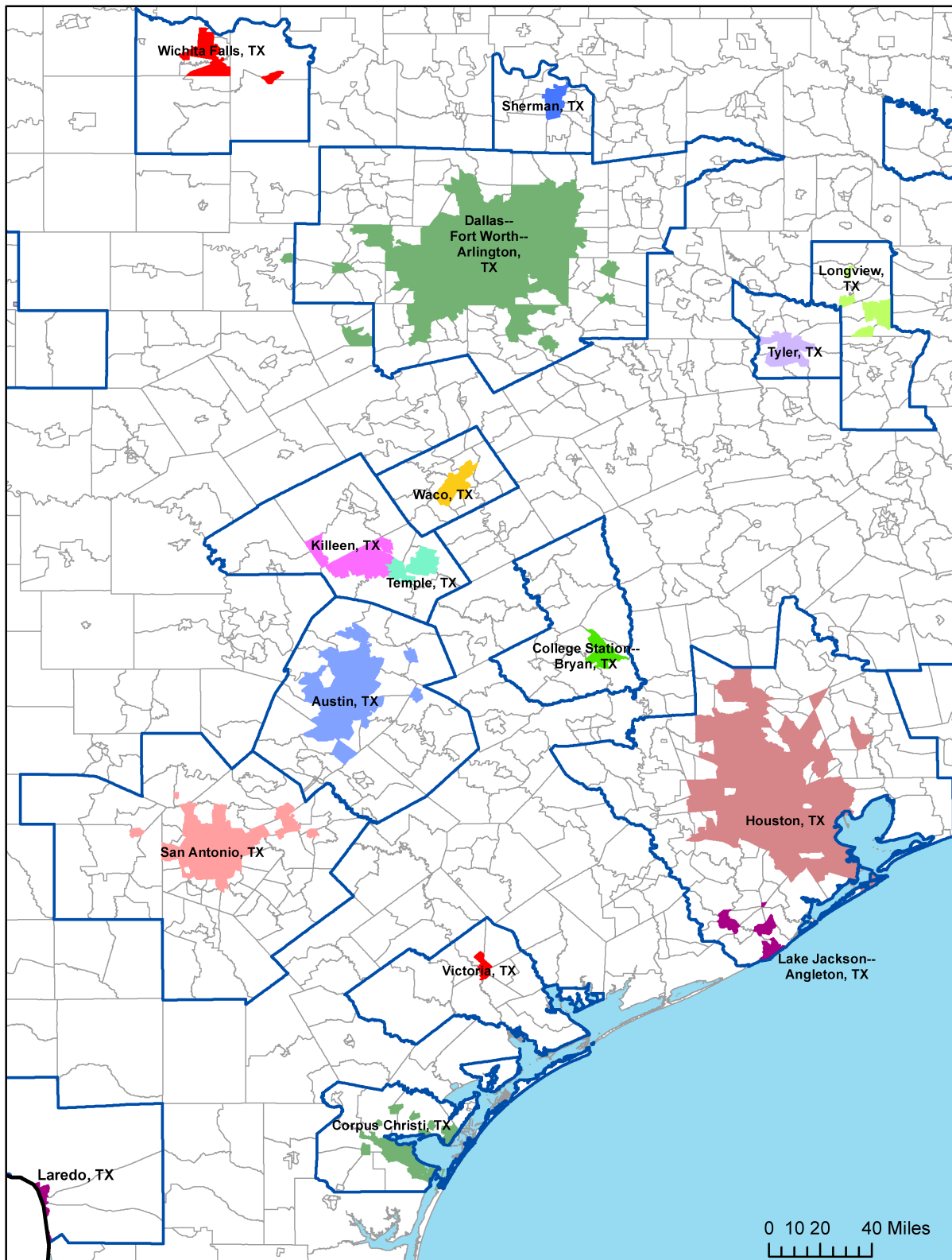
KBMAs from Cleveland to Chicago. Blue lines demarcate the borders of metropolitan CBSAs. Gray lines demarcate tract borders. Delineations are based on commuting flows in 2000.



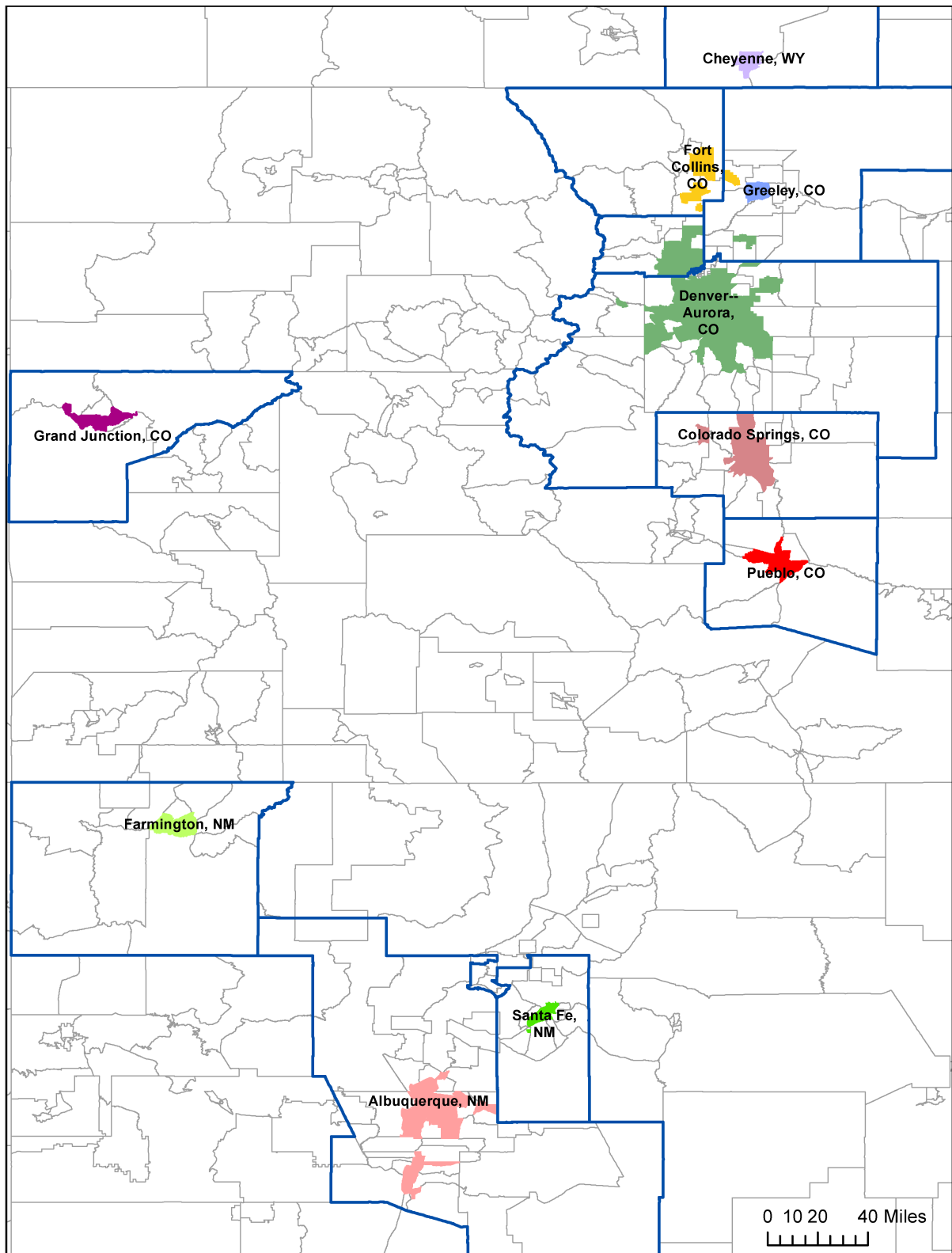
KBMAs from Minneapolis to Omaha. Blue lines demarcate the borders of metropolitan CBSAs. Gray lines demarcate tract borders. Delineations are based on commuting flows in 2000.



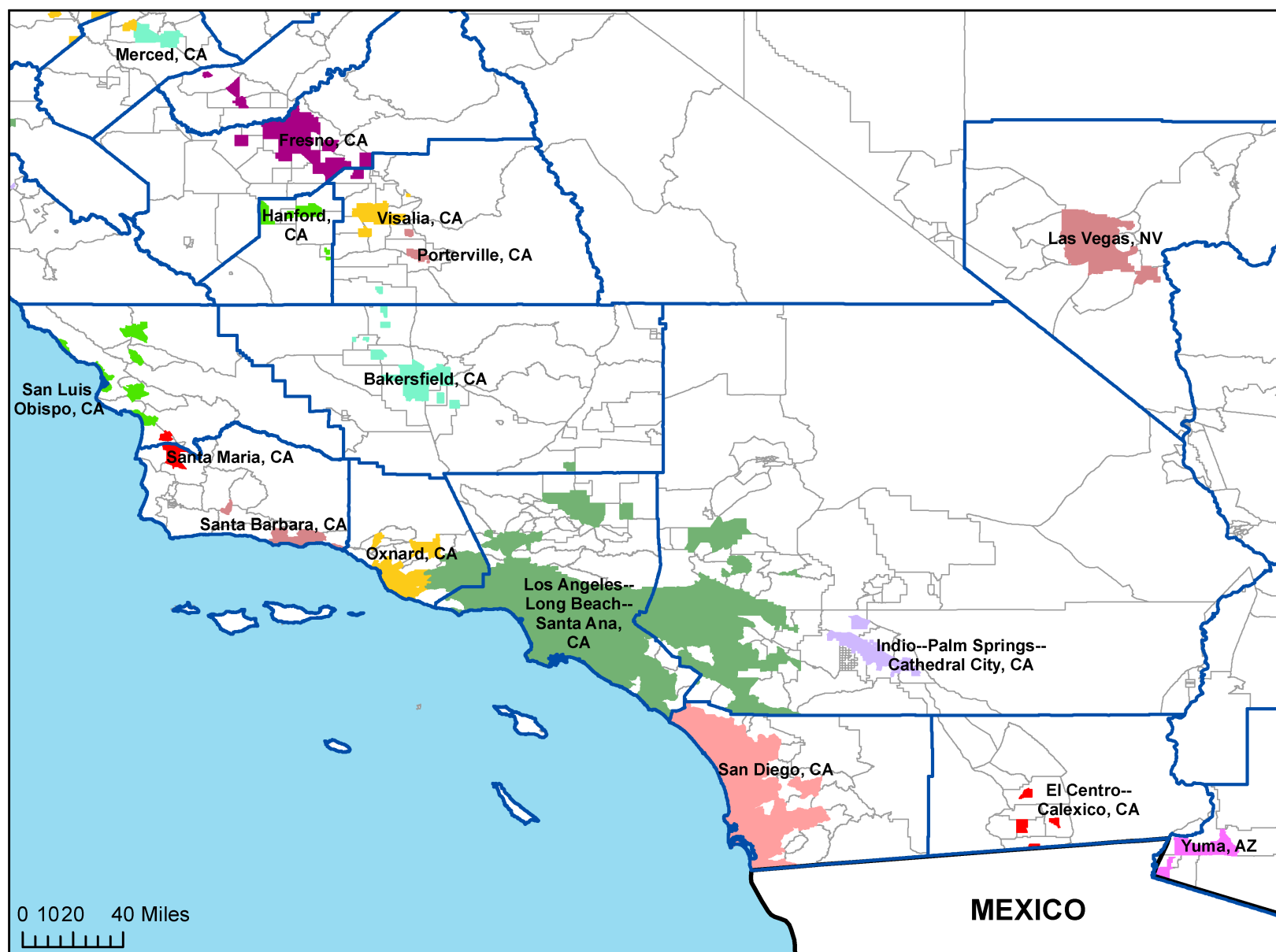
KBMAs from Saint Louis to Kansas City. Blue lines demarcate the borders of metropolitan CBSAs. Gray lines demarcate tract borders. Delineations are based on commuting flows in 2000.



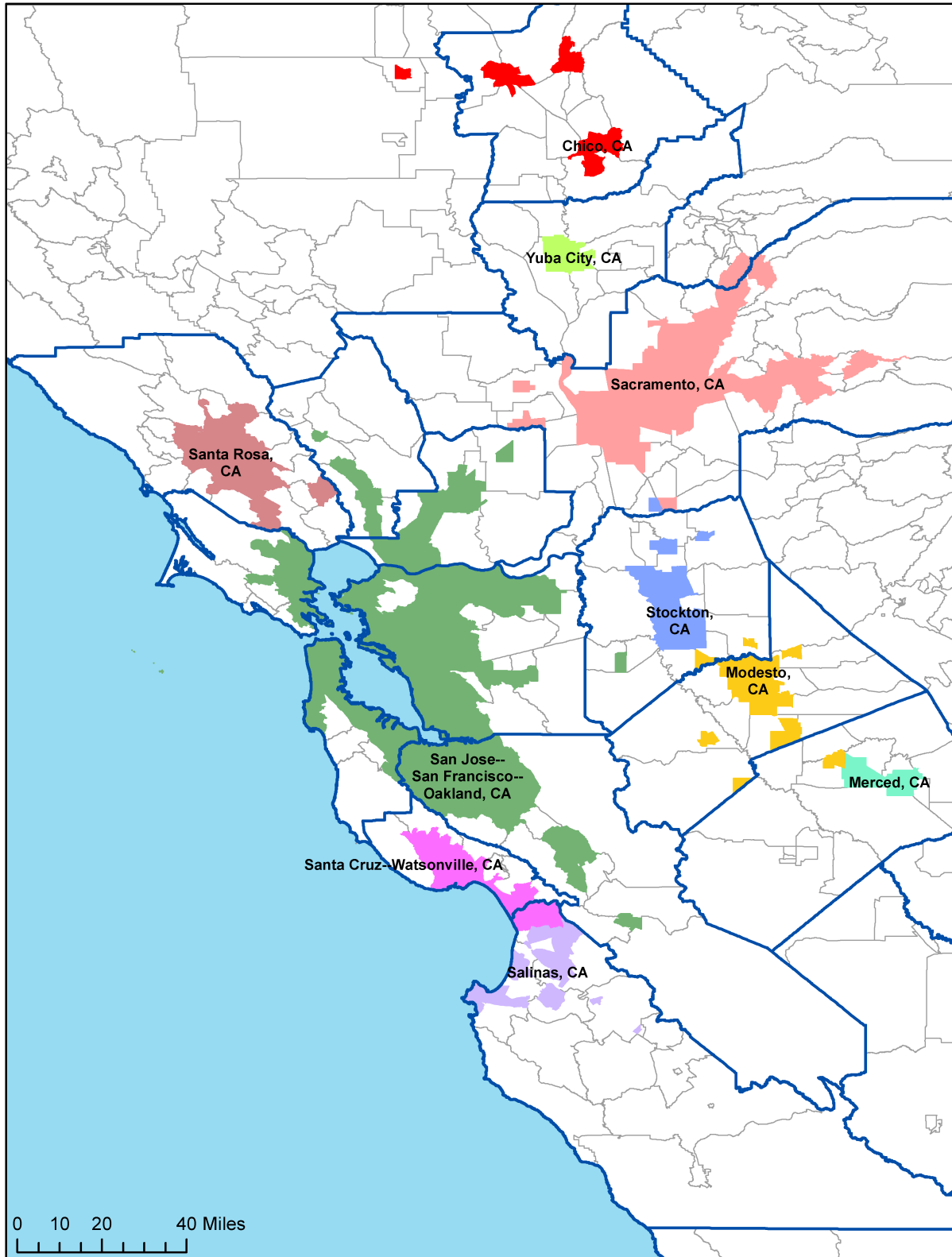
KBMAs in Texas. Blue lines demarcate the borders of metropolitan CBSAs. Gray lines demarcate tract borders. Delineations are based on commuting flows in 2000.



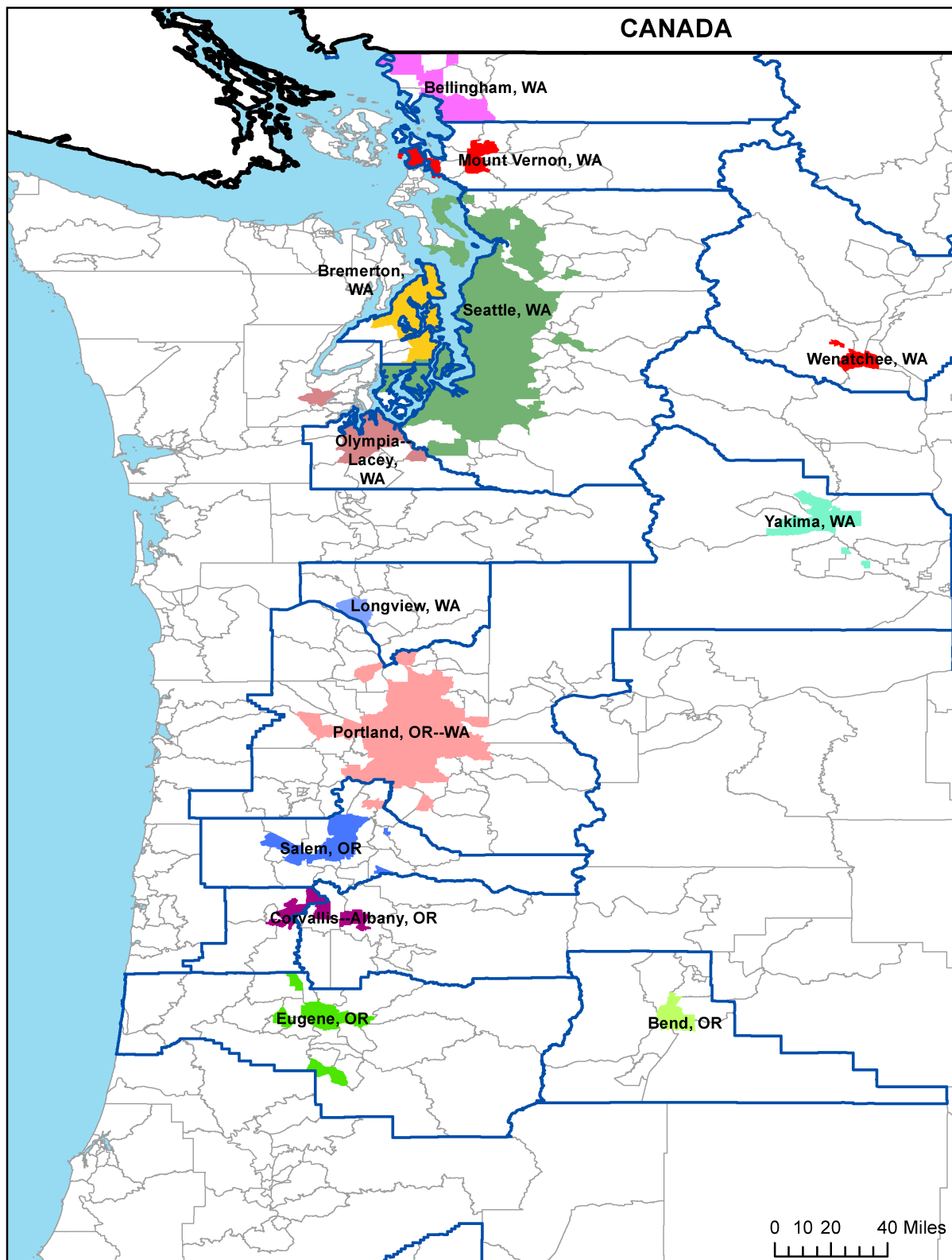
KBMAs in Mountain States. Blue lines demarcate the borders of metropolitan CBSAs. Gray lines demarcate tract borders. Delineations are based on commuting flows in 2000.



KBMAs in Southern California. Blue lines demarcate the borders of metropolitan CBSAs. Gray lines demarcate tract borders. Delineations are based on commuting flows in 2000.



KBMAs in Northern California. Blue lines demarcate the borders of metropolitan CBSAs. Gray lines demarcate tract borders. Delineations are based on commuting flows in 2000.



KBMAs in the Pacific Northwest. Blue lines demarcate the borders of metropolitan CBSAs. Gray lines demarcate tract borders. Delineations are based on commuting flows in 2000.