

## Comparison Maps of KBUAs, KBMAs, and KBMRs

Map supplement to Rappaport, Jordan, and McKenzie Humann. 2025. “A Better Delineation of U.S. Metropolitan Areas.” Federal Reserve Bank of Kansas City, Research Working Paper no. 25-01, April.

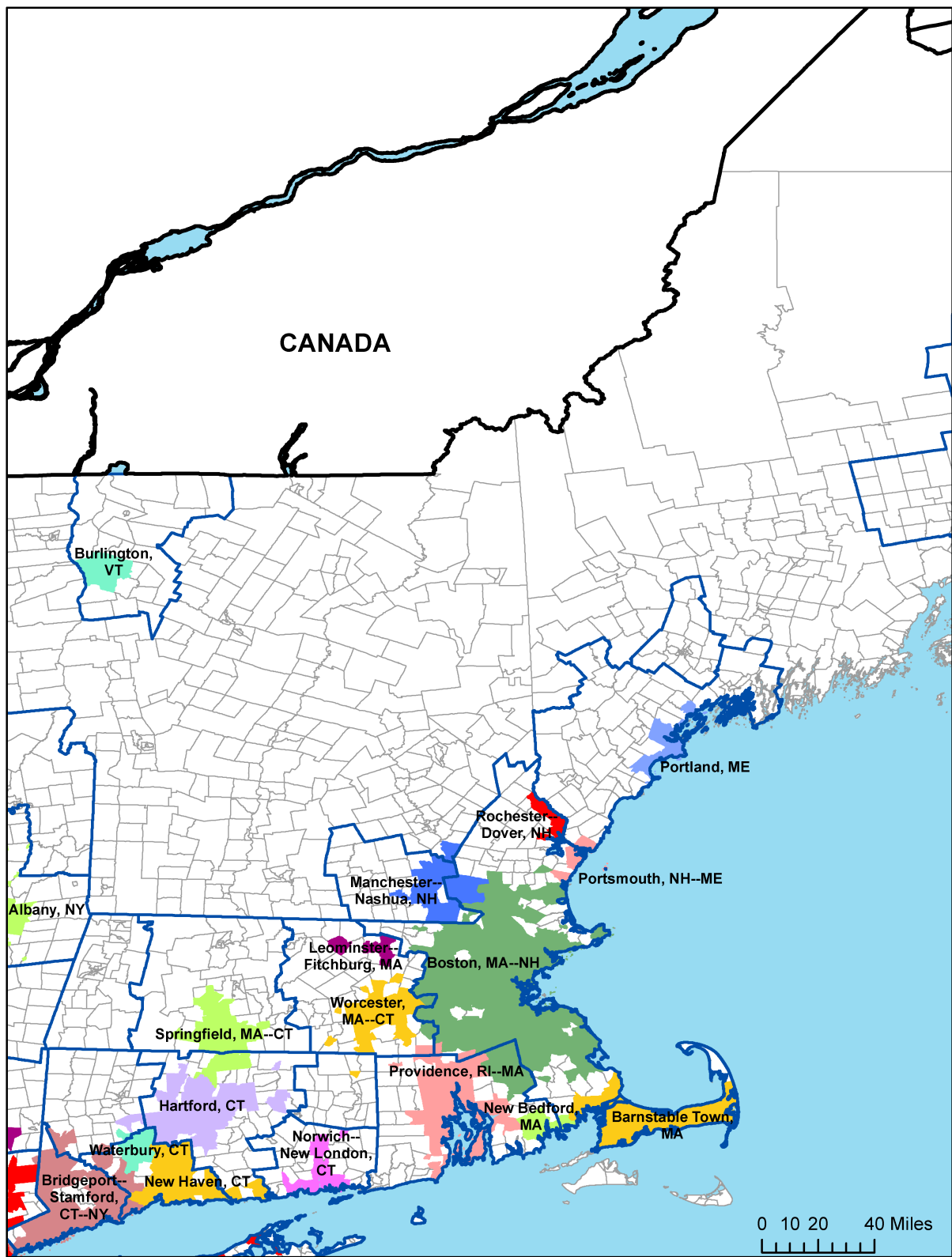
The [paper](#) broadly defines metropolitan areas as unions of built-up locations near each other with combined population of at least moderate scale and among which a significant share of residents and workers travel on a day-to-day basis between places of residence, places of employment, and places of consumption. A wide range of parameterizations of our delineation algorithm are arguably consistent with this broad definition.

KBMAs, our baseline parameterization, are likely to be appropriate for most questions and purposes. Their parameterization balances encompassing commuting flows and excluding locations insufficiently nearby or built up. One alternative parameterization, Kernel-Based Metropolitan Regions (KBMRs), more heavily weights encompassing commuting flows and so delineates metropolitan areas that are more expansive. Another alternative parameterization, Kernel-Based Urban Areas (KBUAs), more heavily weights excluding less built-up and less near locations and so delineates metropolitan areas that are more compact.

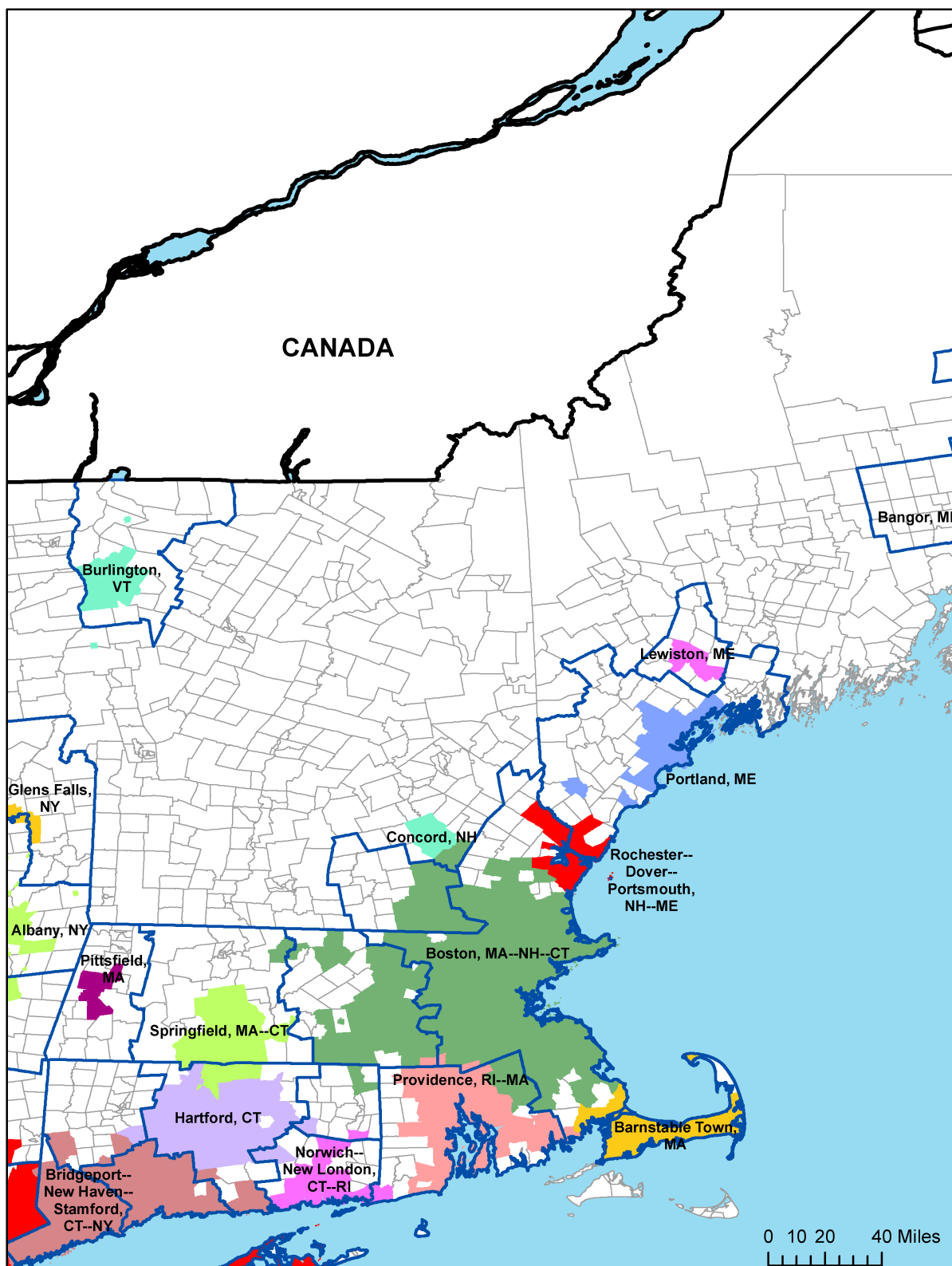
This supplement includes maps of KBUAs, KBMAs, and KBMRs for each of the following regions:

- New England
- New York City to Virginia Beach
- Northern California
- Florida
- Texas
- Cleveland to Chicago
- Saint Louis to Kansas City
- Southern California

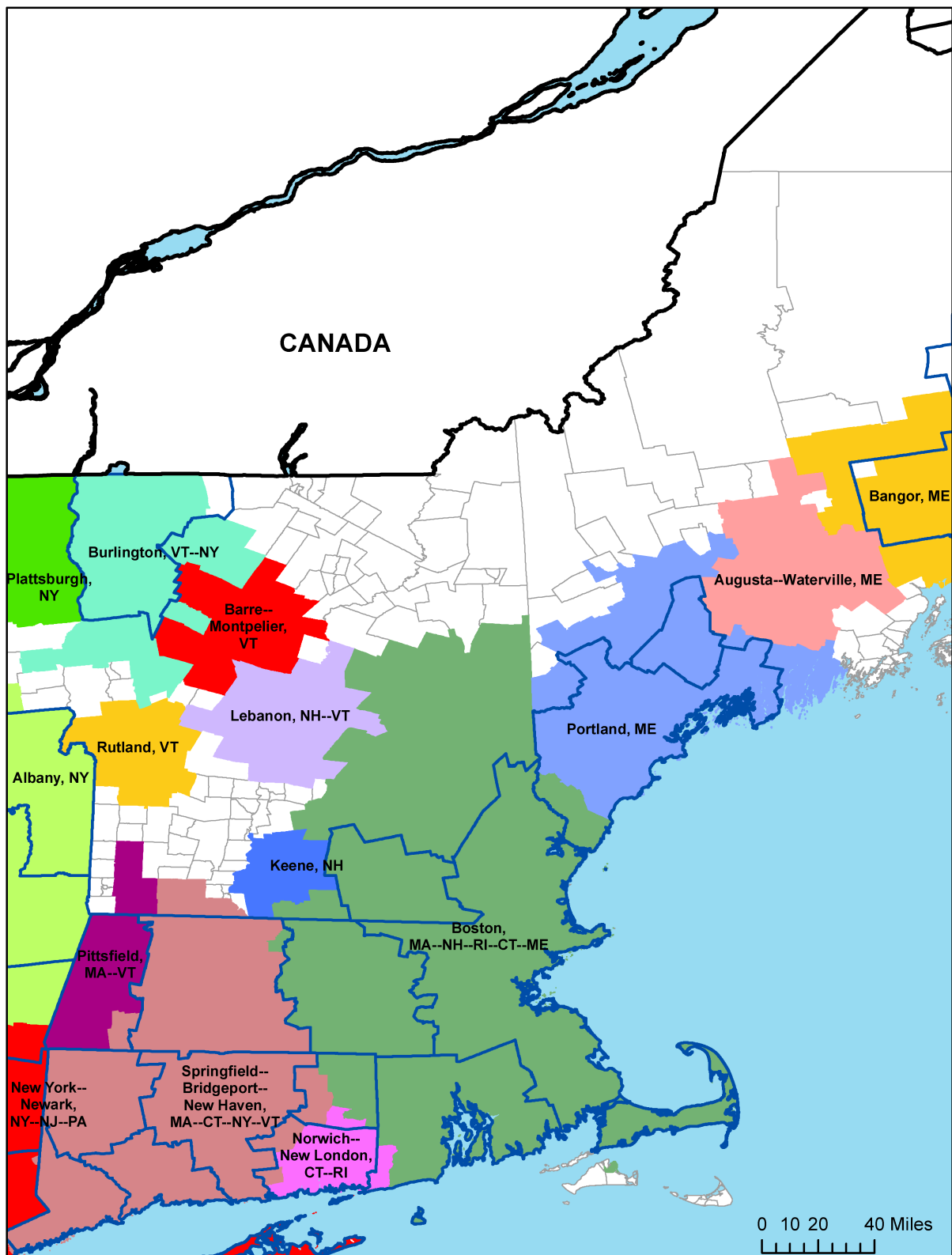
Additional maps, enumerations, and workbooks are available from the paper’s [webpage](#).



**KBUAs in New England.** Blue lines demarcate the borders of metropolitan CBSAs. Gray lines demarcate tract borders.

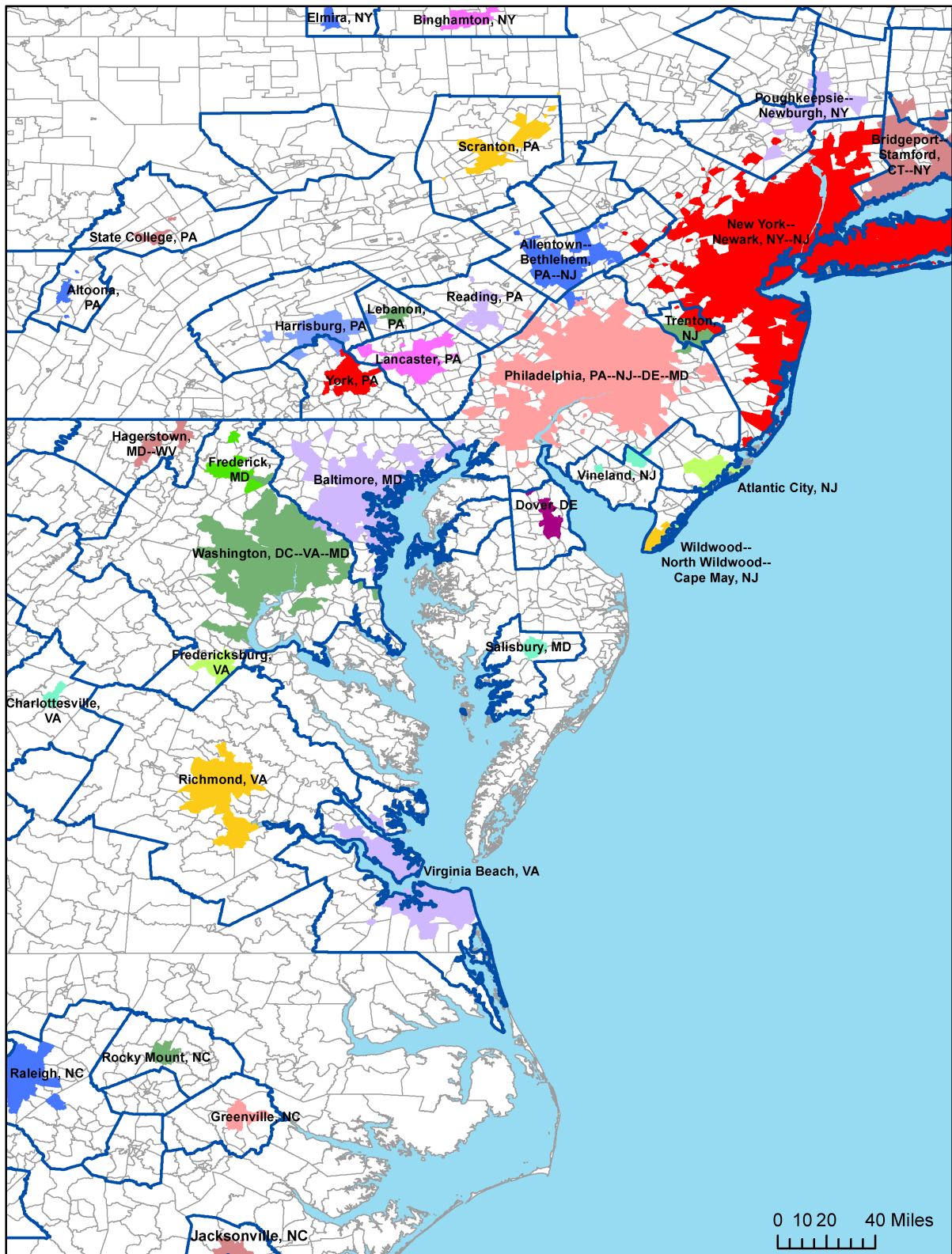


**KBMAs in New England.** Blue lines demarcate the borders of metropolitan CBSAs. Gray lines demarcate tract borders.

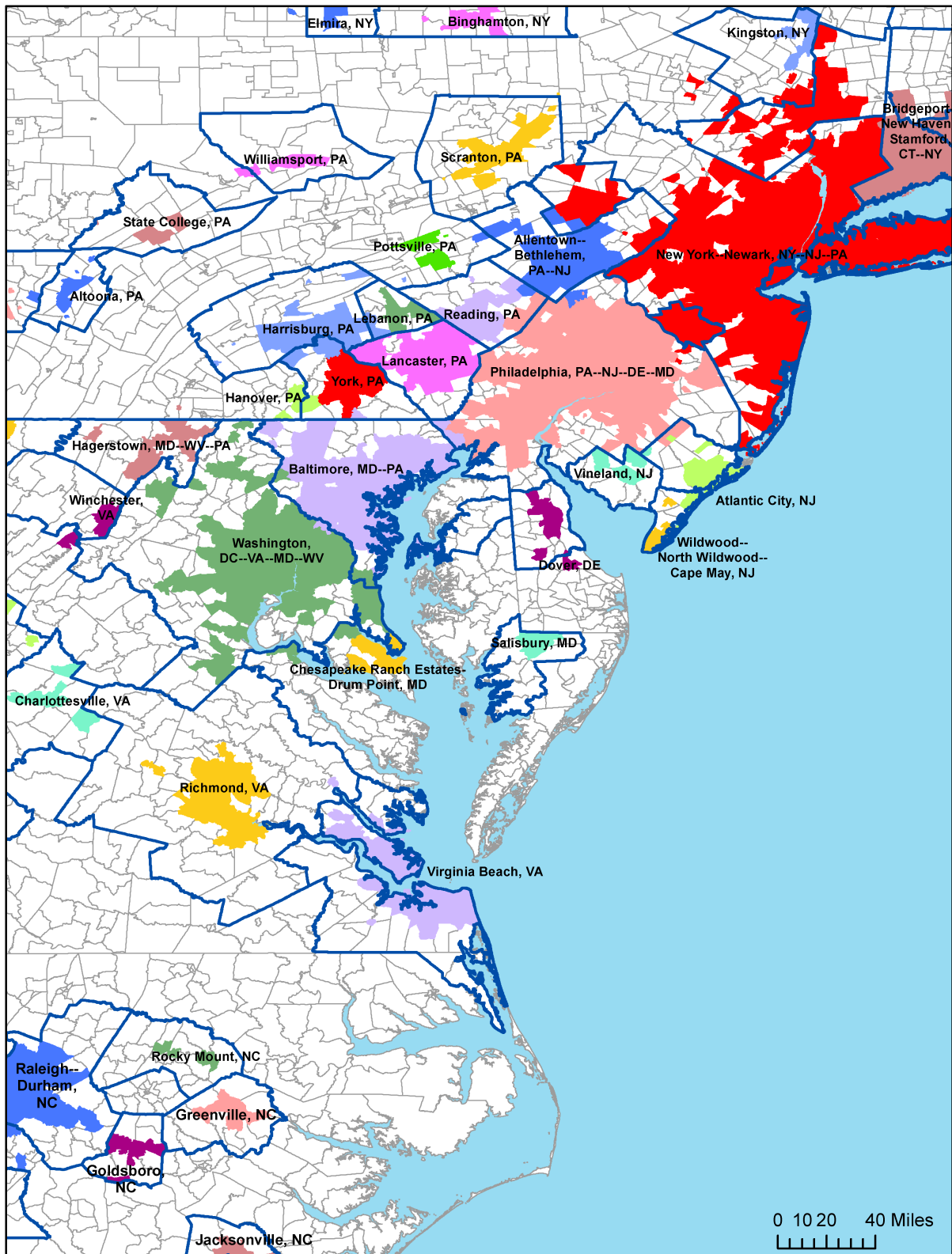


**KBMRs in New England.** Blue lines demarcate the borders of metropolitan CBSAs. Gray lines demarcate tract borders.





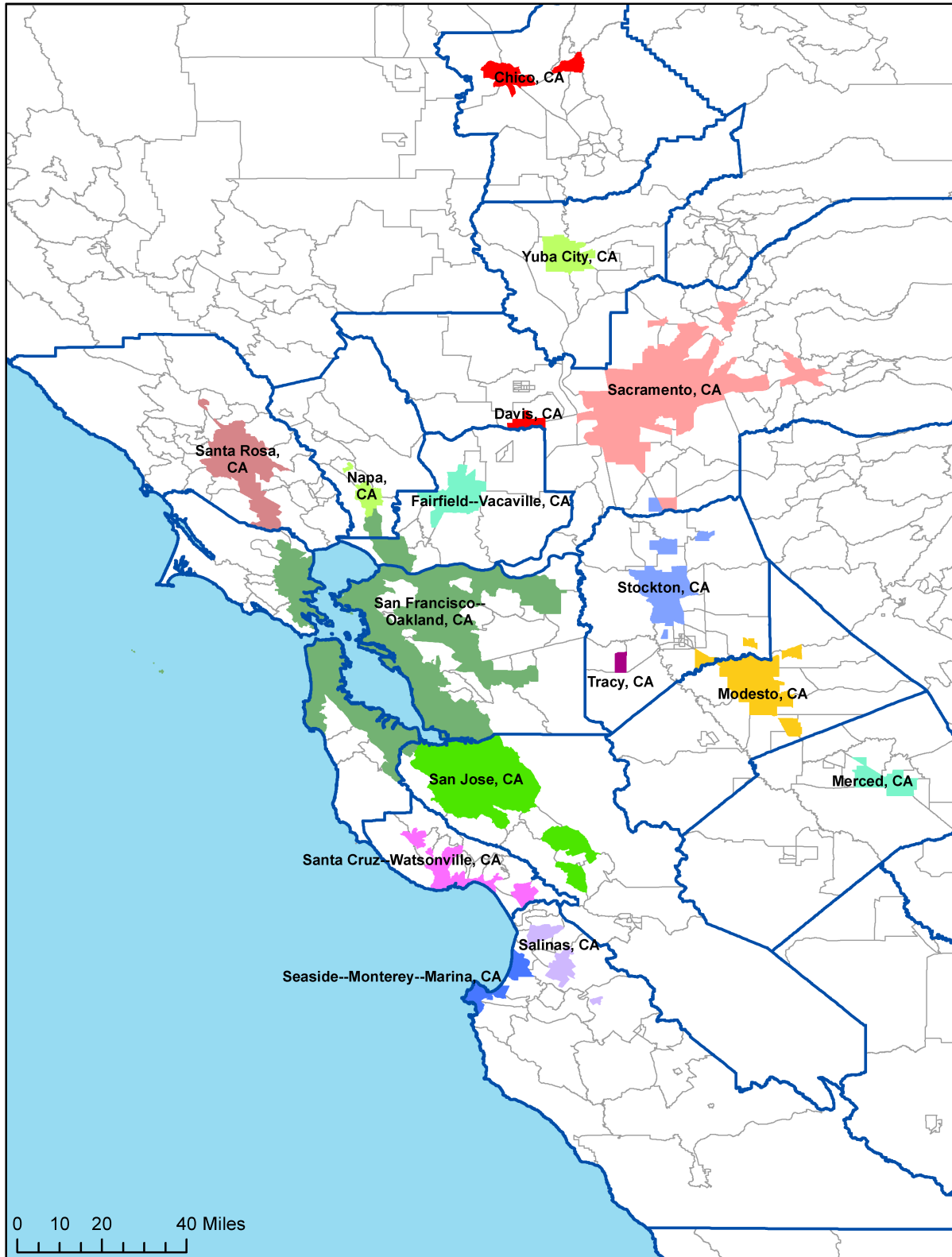
**KBUAs from NYC to Virginia Beach.** Blue lines demarcate the borders of metropolitan CBSAs. Gray lines demarcate tract borders.



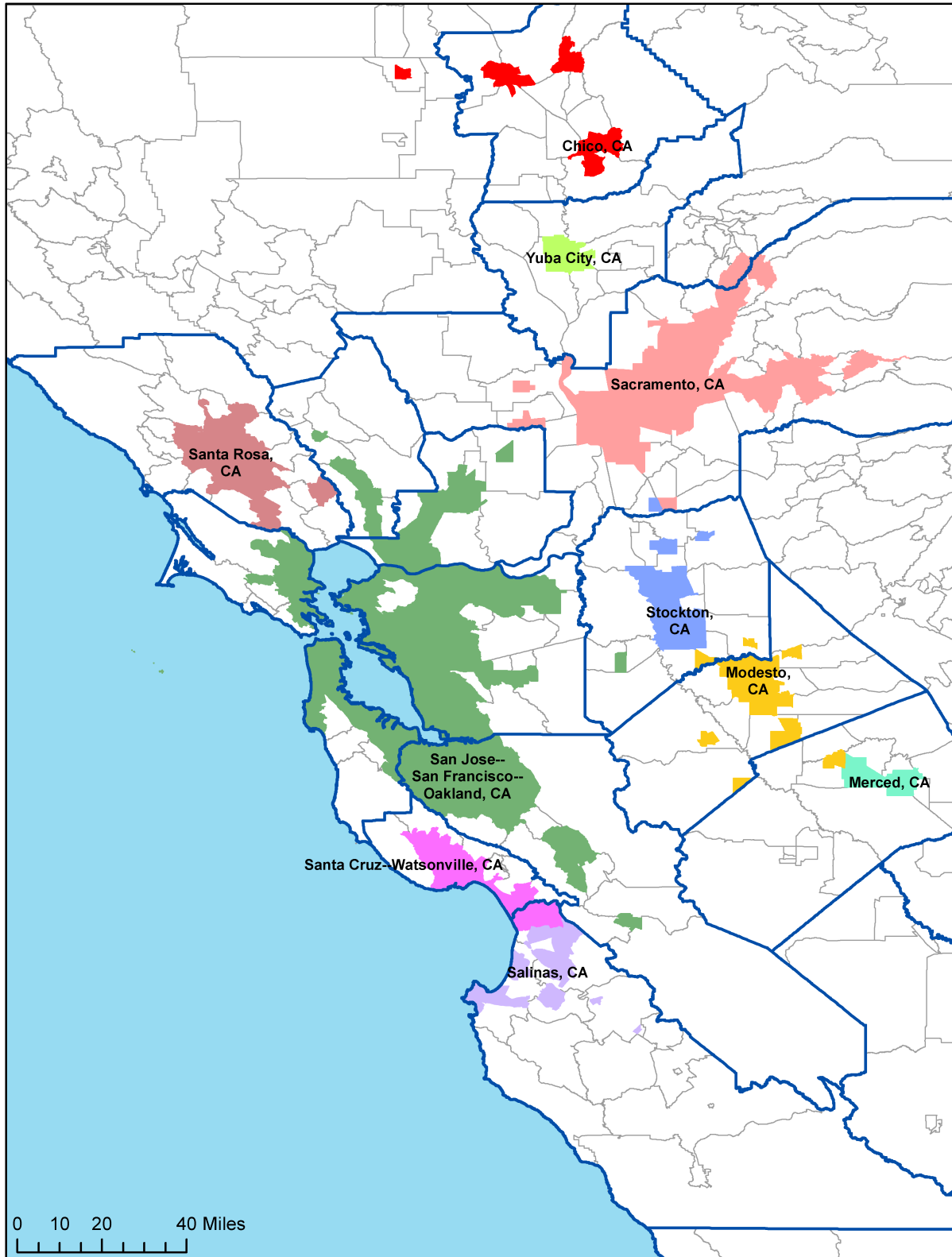
KBMAs from NYC to Virginia Beach. Blue lines demarcate the borders of metropolitan CBSAs. Gray lines demarcate tract borders.



KBMRs from NYC to Virginia Beach. Blue lines demarcate the borders of metropolitan CBSAs. Gray lines demarcate tract borders.

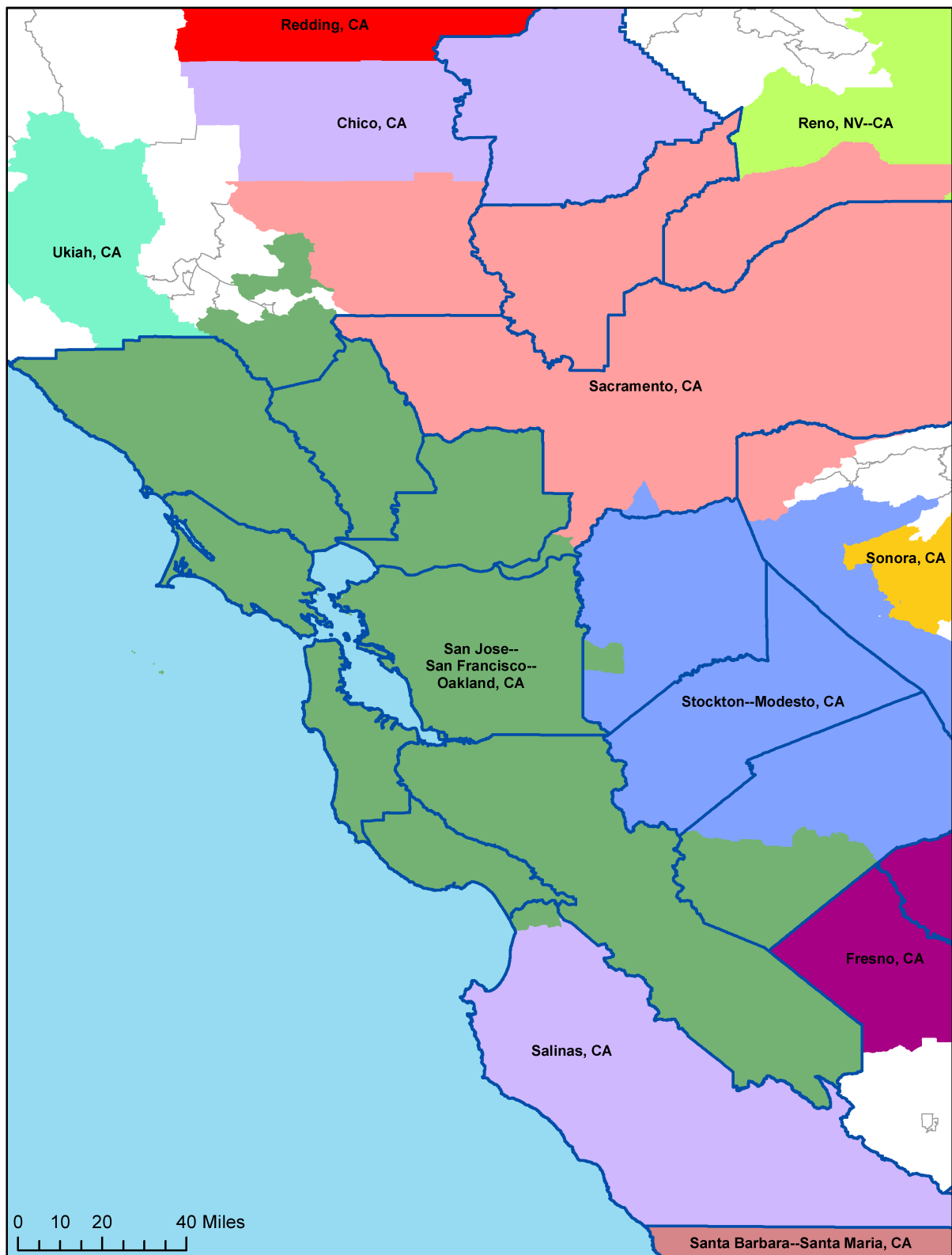


**KBUAs in Northern California.** Blue lines demarcate the borders of metropolitan CBSAs. Gray lines demarcate tract borders.

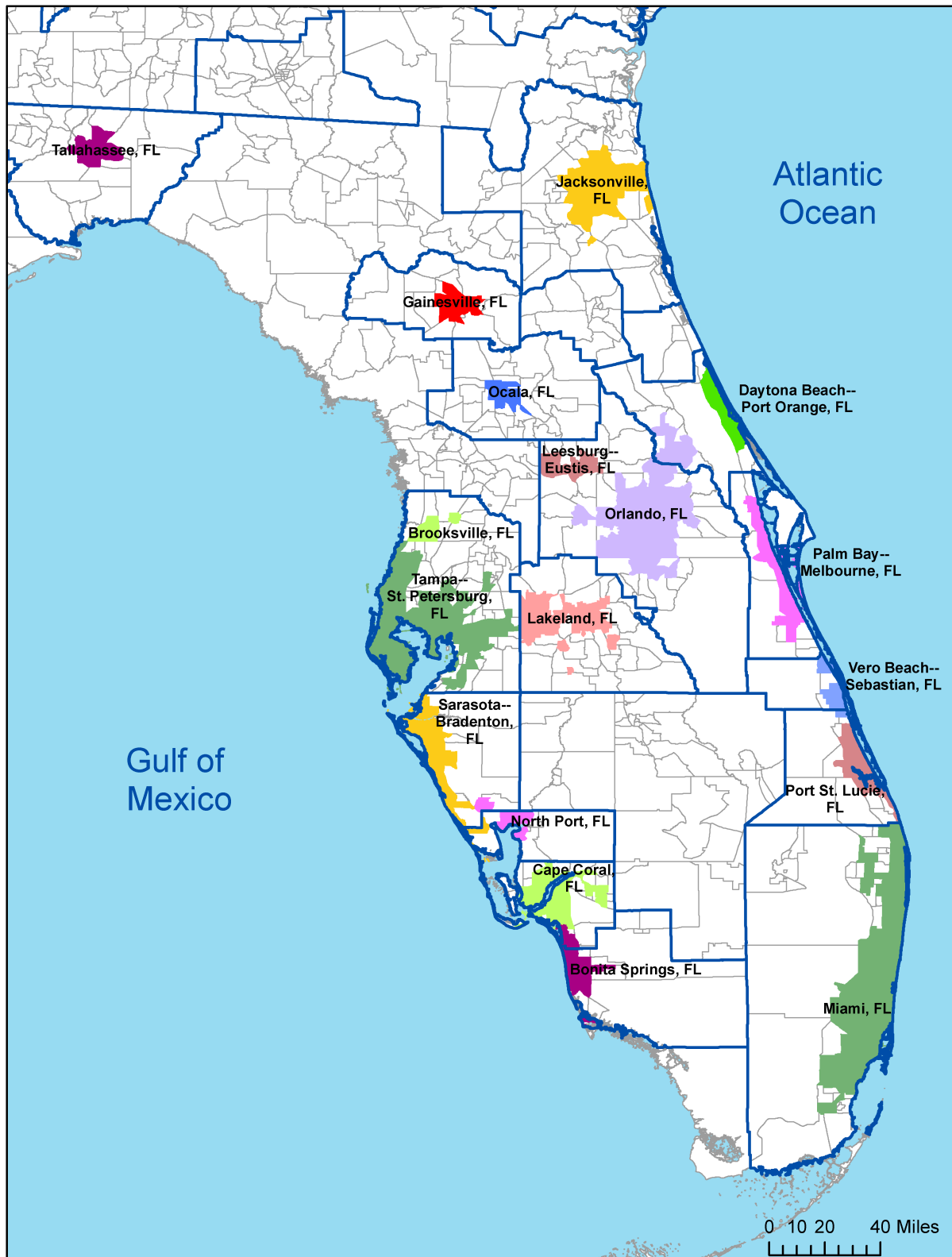


**KBMAs in Northern California.** Blue lines demarcate the borders of metropolitan CBSAs. Gray lines demarcate tract borders.



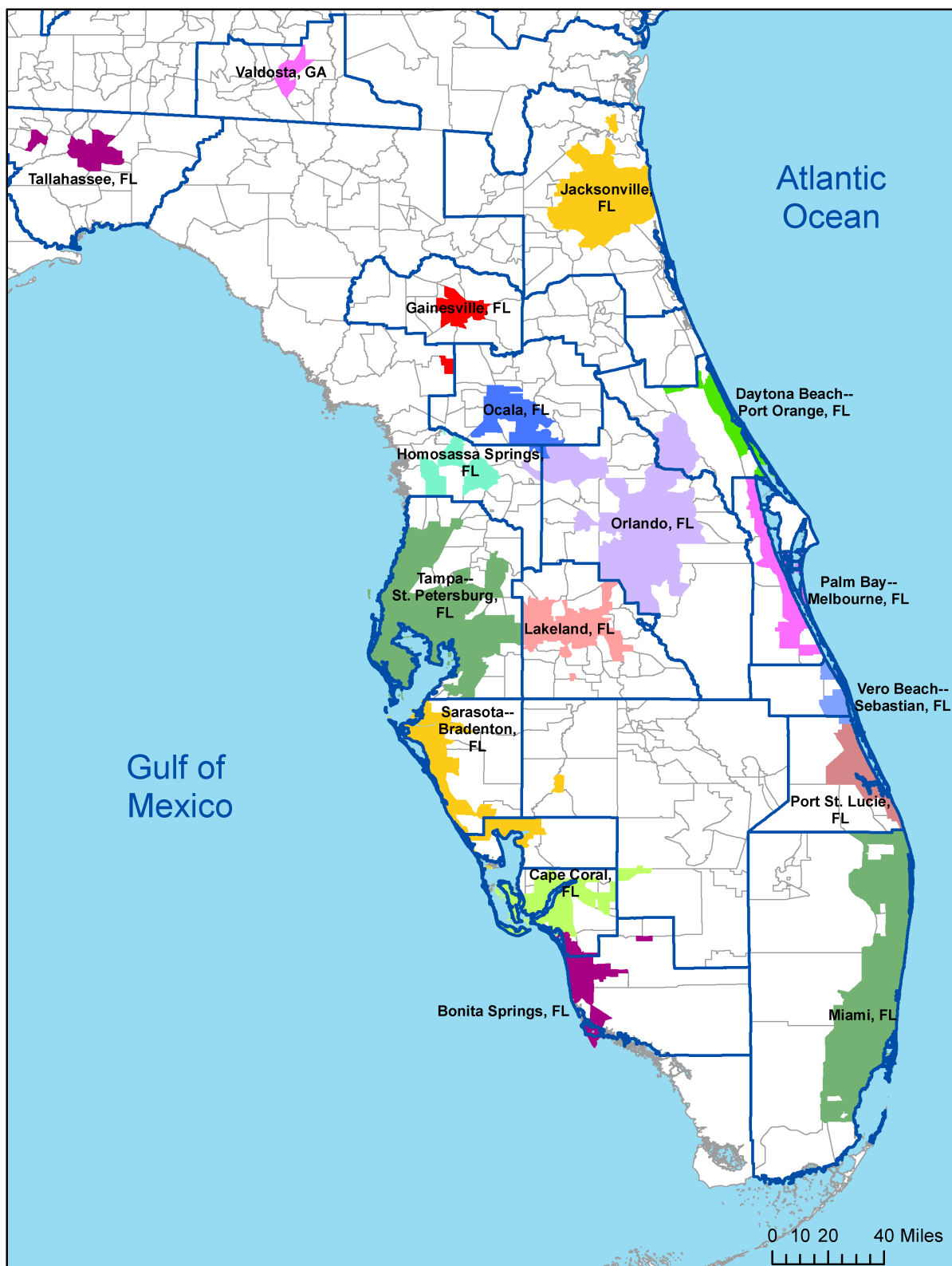


**KBMRs in Northern California.** Blue lines demarcate the borders of metropolitan CBSAs. Gray lines demarcate tract borders.

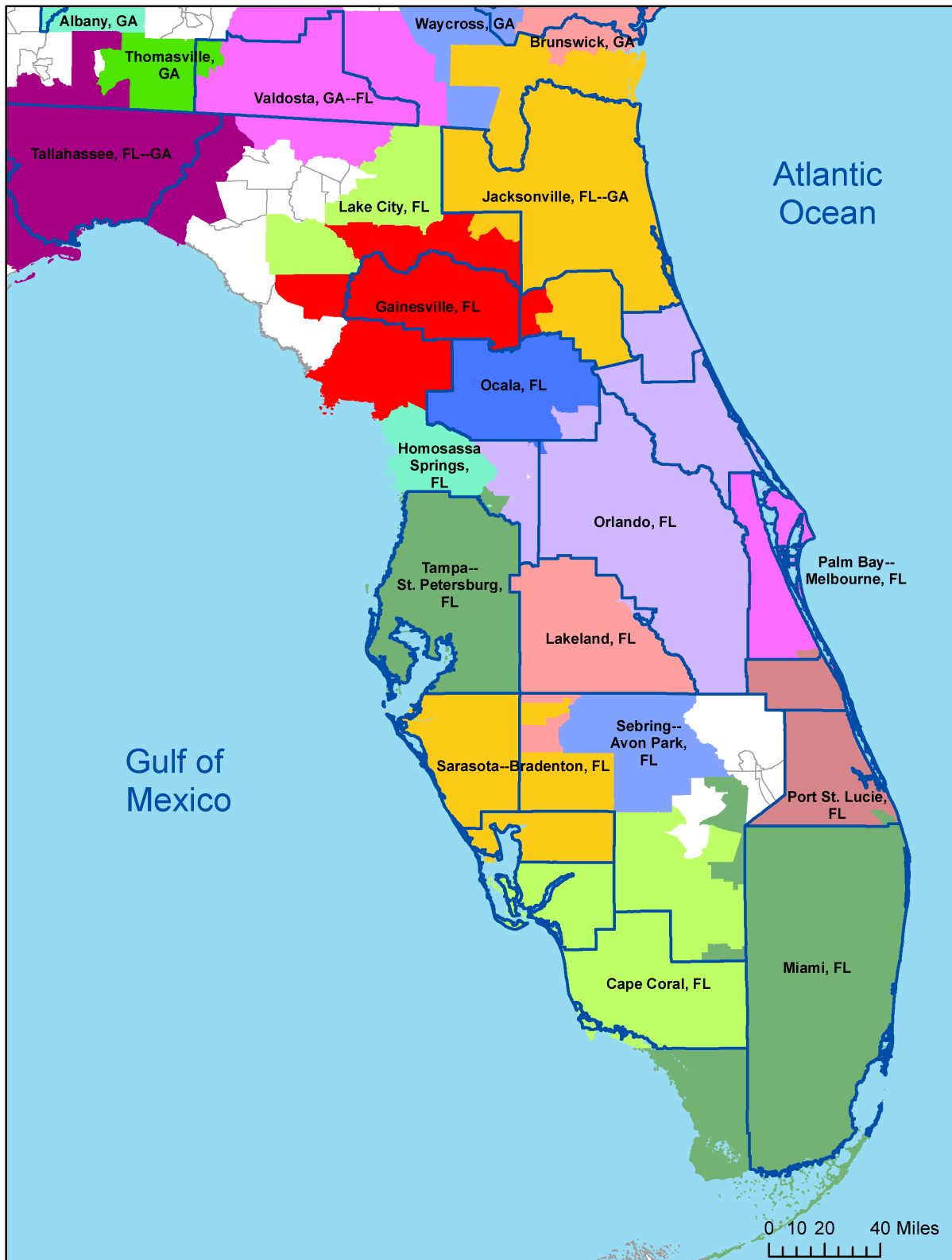


**KBUAs in Florida.** Blue lines demarcate the borders of metropolitan CBSAs. Gray lines demarcate tract borders.

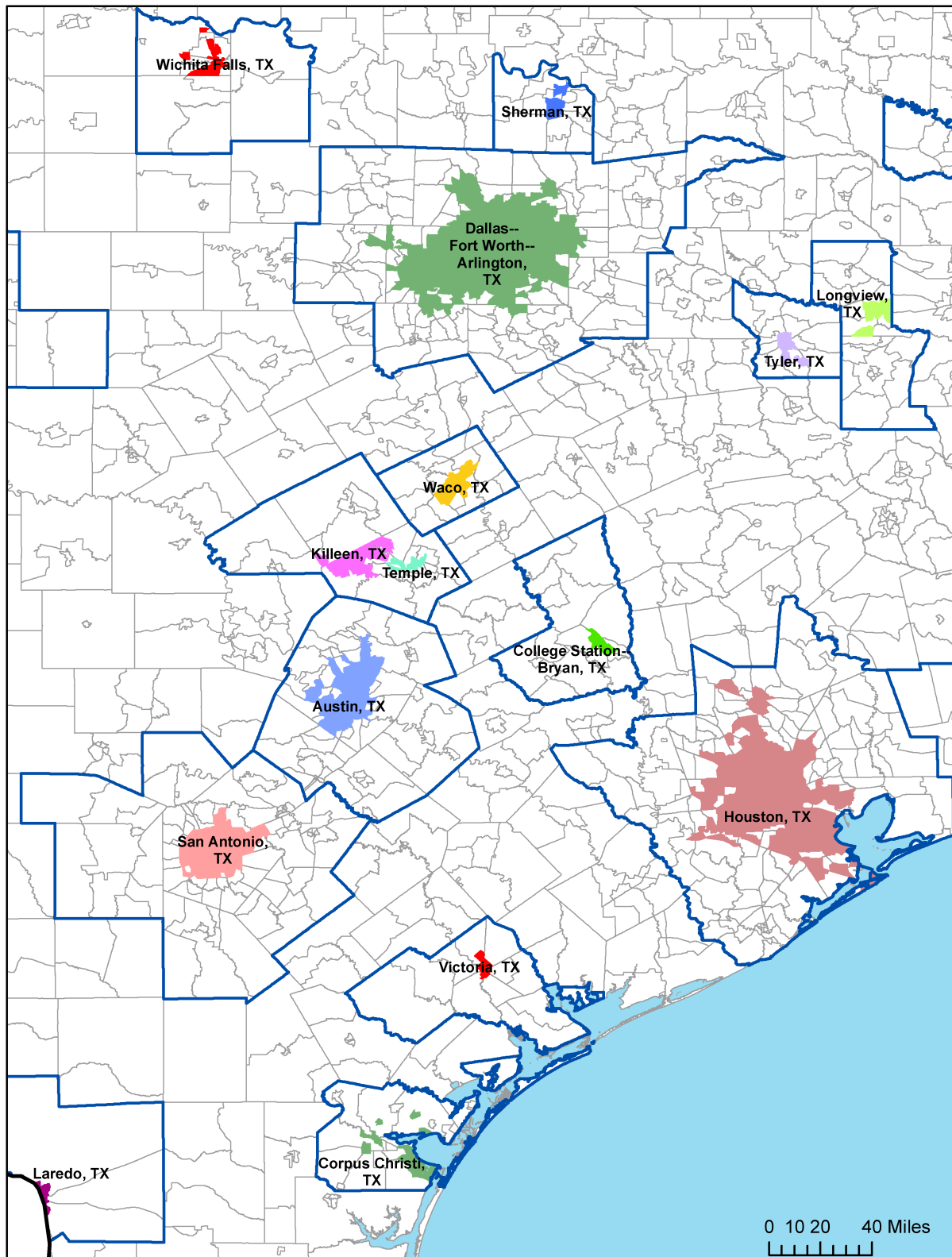




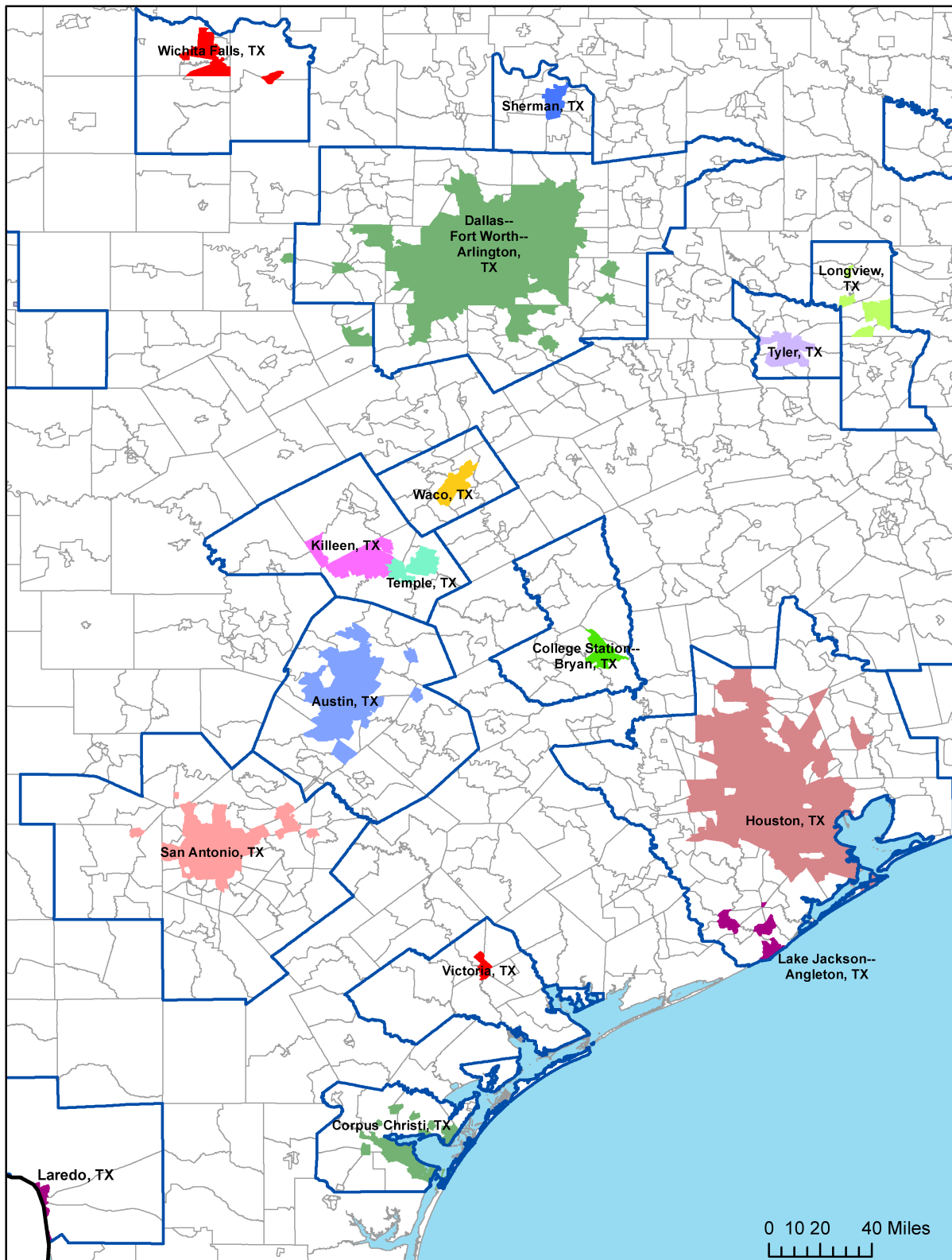
**KBMAs in Florida.** Blue lines demarcate the borders of metropolitan CBSAs. Gray lines demarcate tract borders.



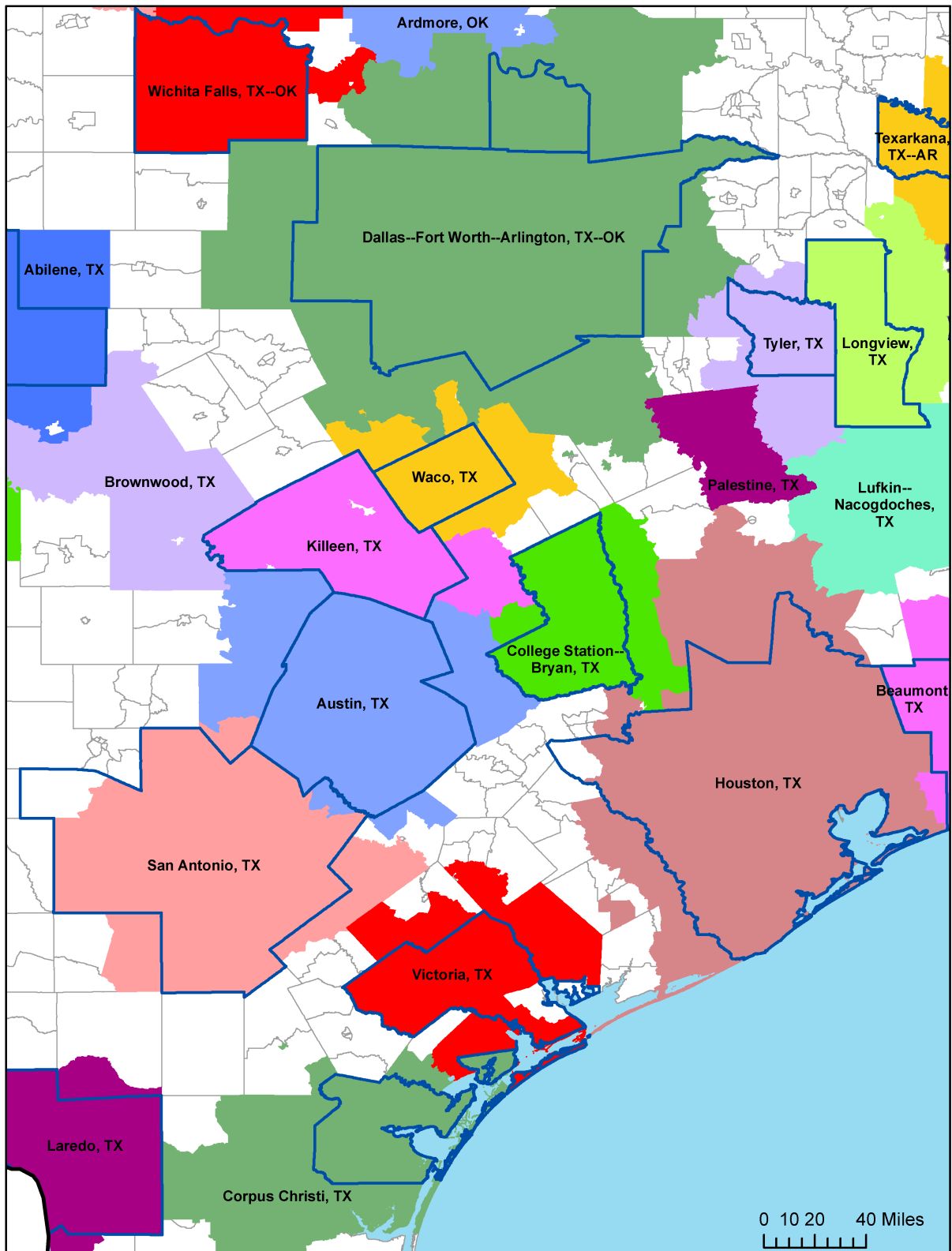
**KBMRs in Florida.** Blue lines demarcate the borders of metropolitan CBSAs. Gray lines demarcate tract borders.



**KBUAs in Texas.** Blue lines demarcate the borders of metropolitan CBSAs. Gray lines demarcate tract borders.



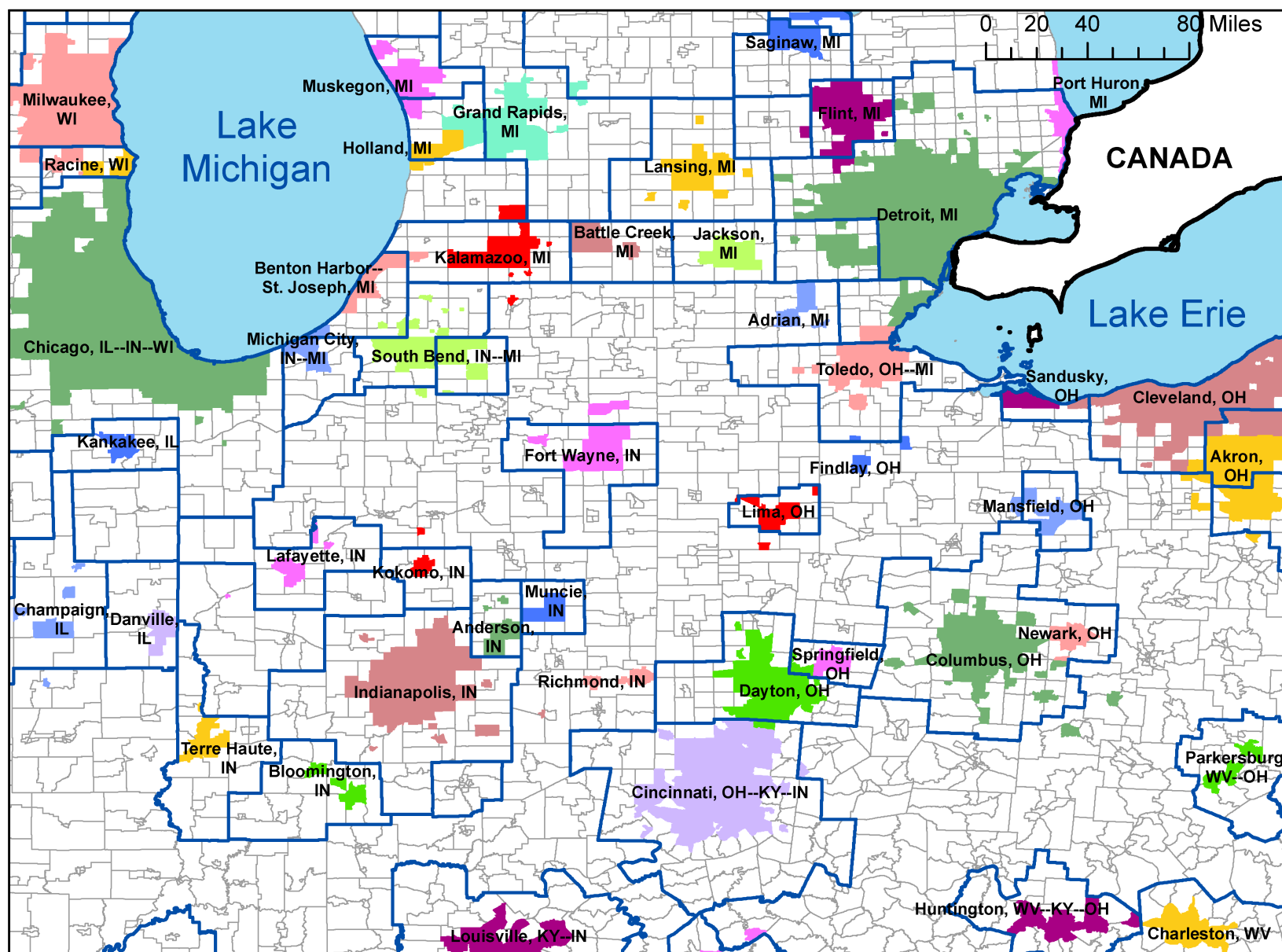
**KBMAs in Texas.** Blue lines demarcate the borders of metropolitan CBSAs. Gray lines demarcate tract borders.



**KBMRs in Texas.** Blue lines demarcate the borders of metropolitan CBSAs. Gray lines demarcate tract borders.

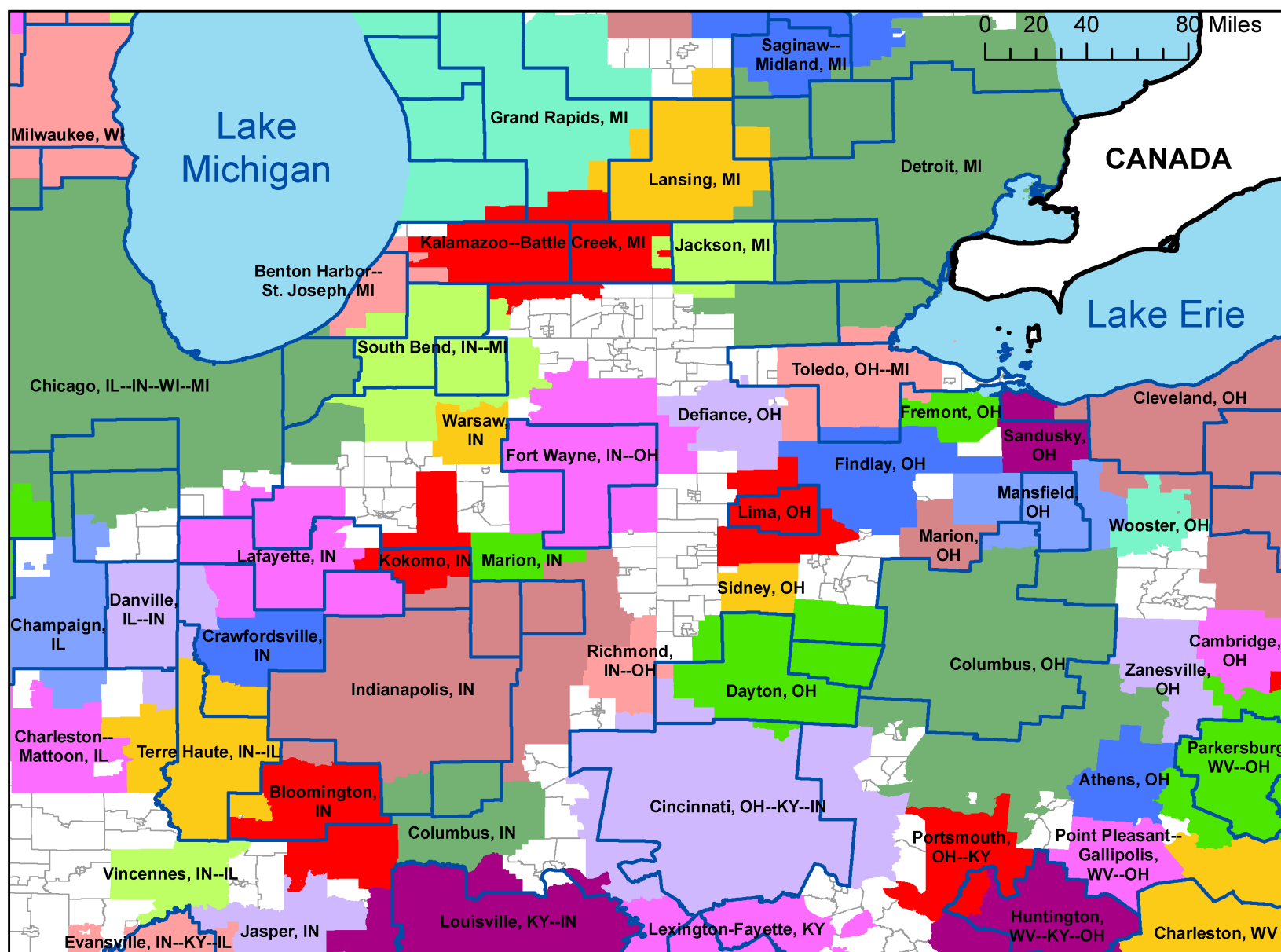




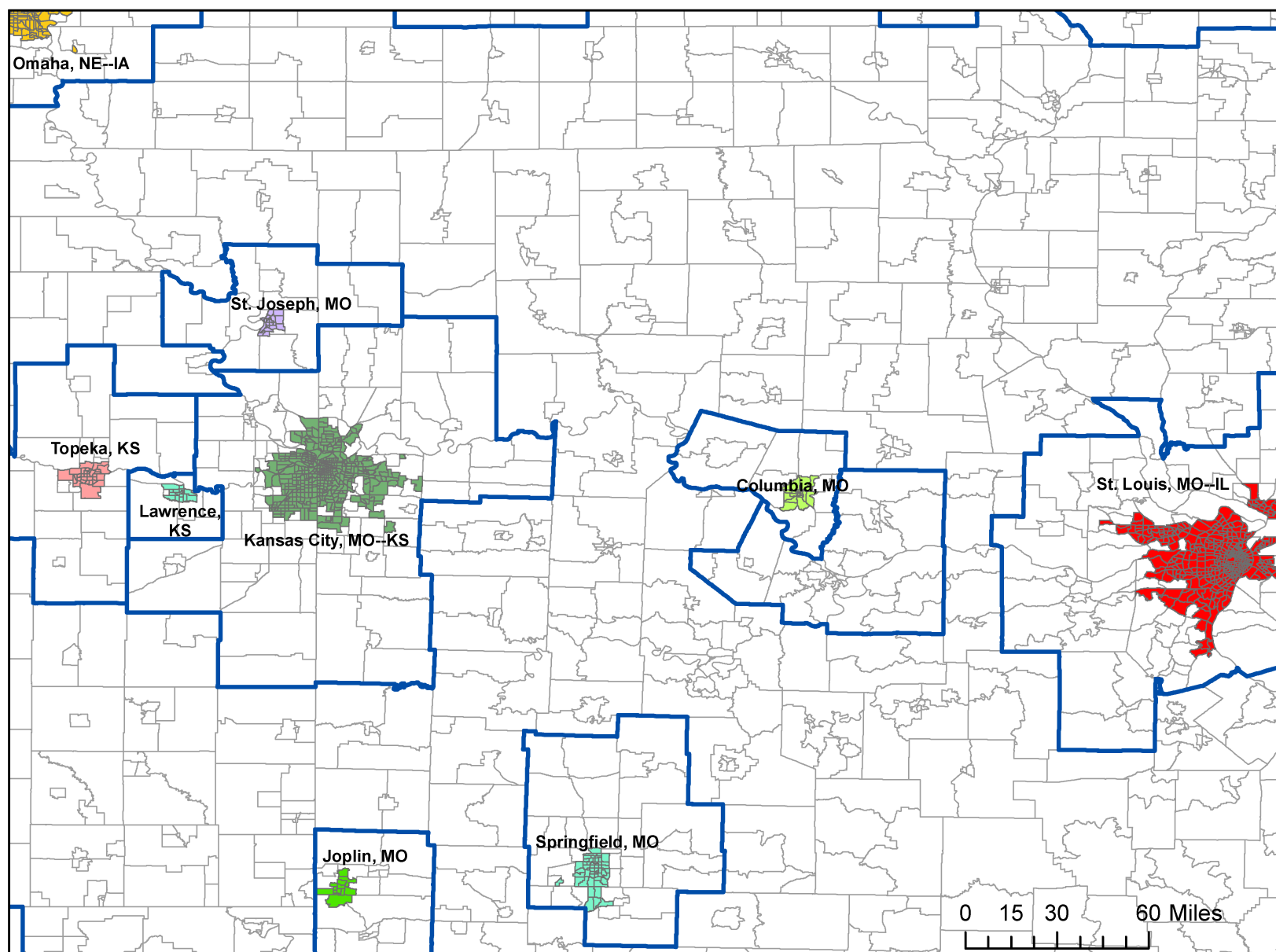


KBMAs from Cleveland to Chicago. Blue lines demarcate the borders of metropolitan CBSAs. Gray lines demarcate tract borders.

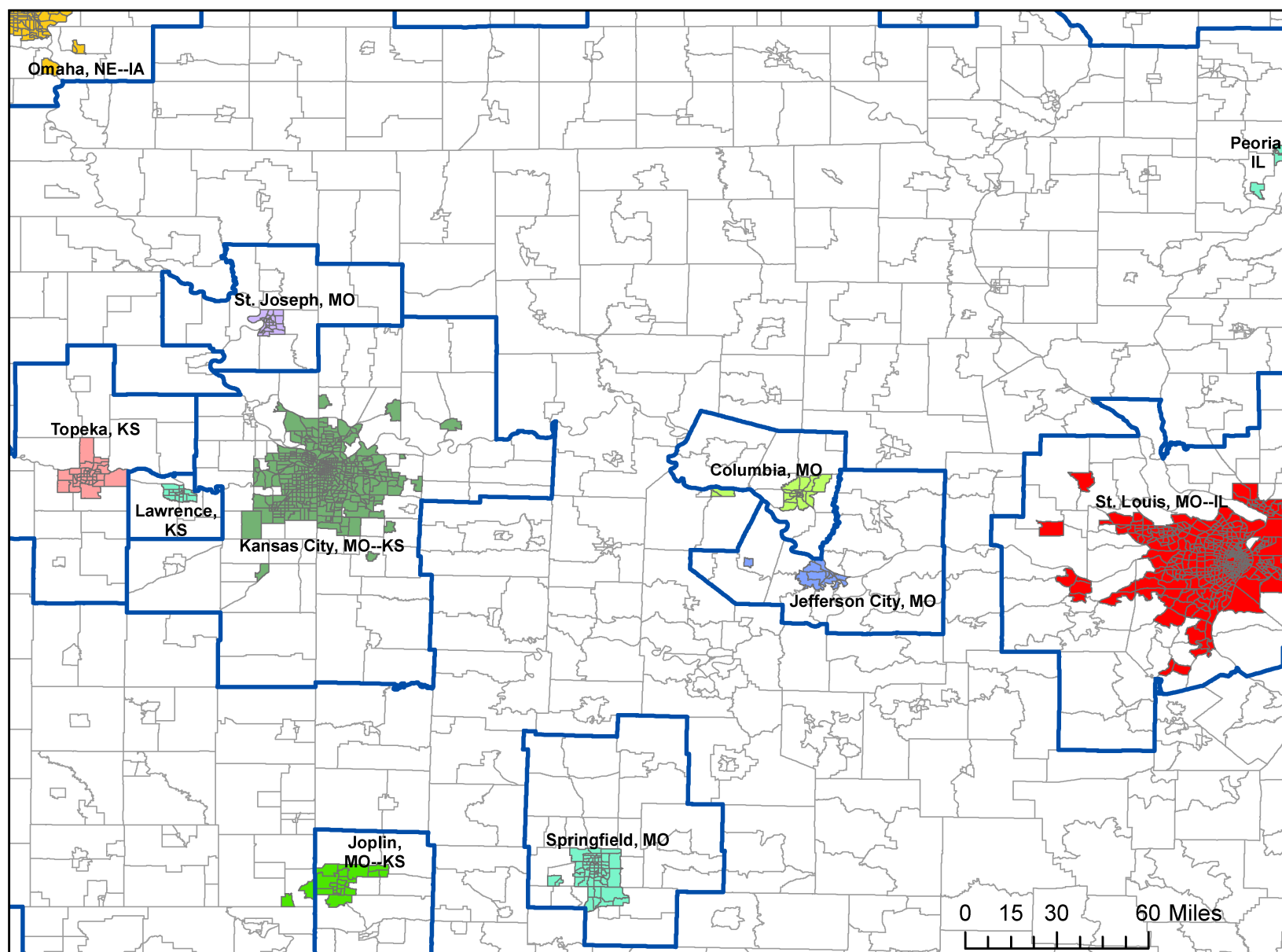




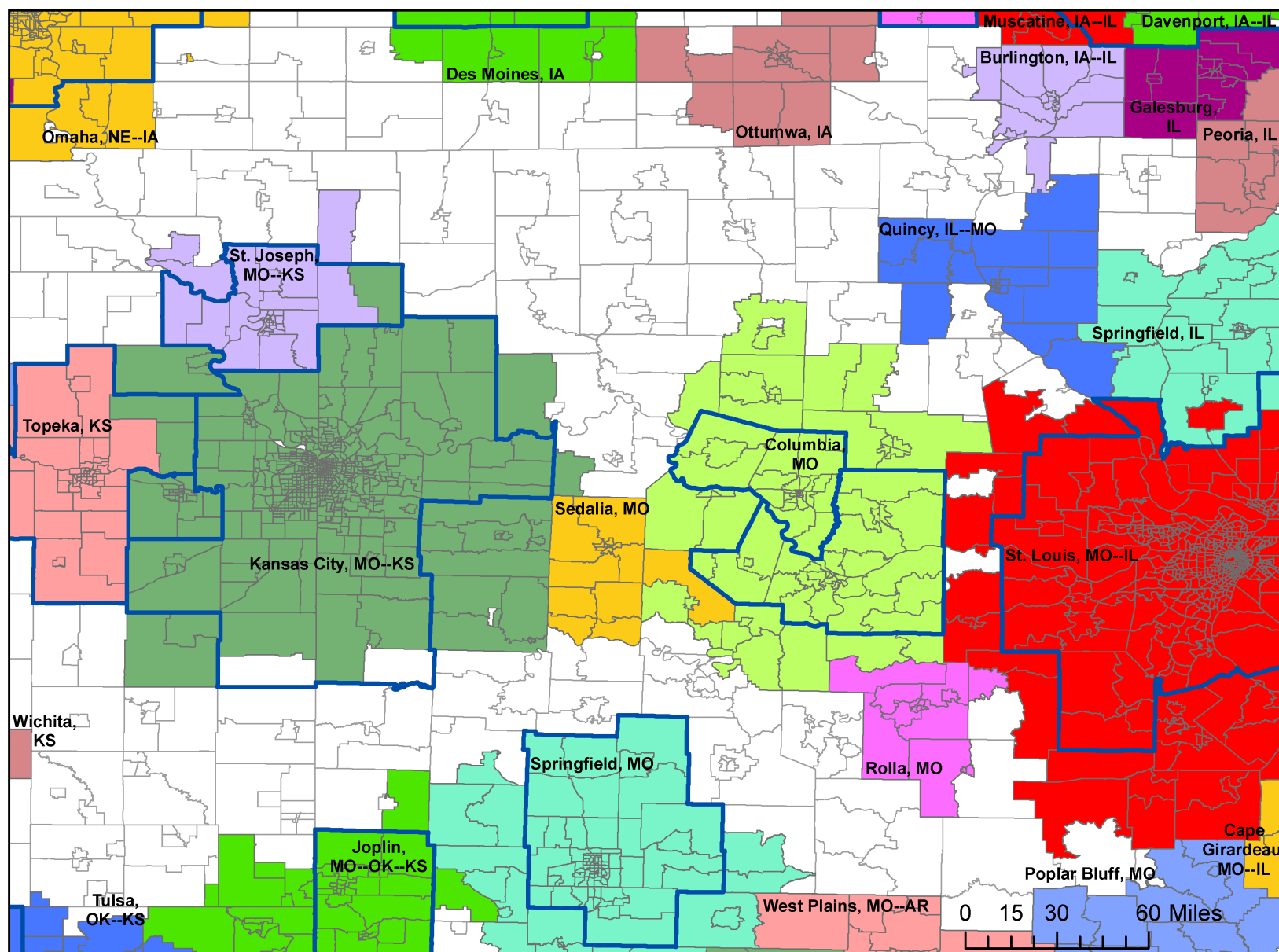
**KBMRs from Cleveland to Chicago.** Blue lines demarcate the borders of metropolitan CBSAs. Gray lines demarcate tract borders.



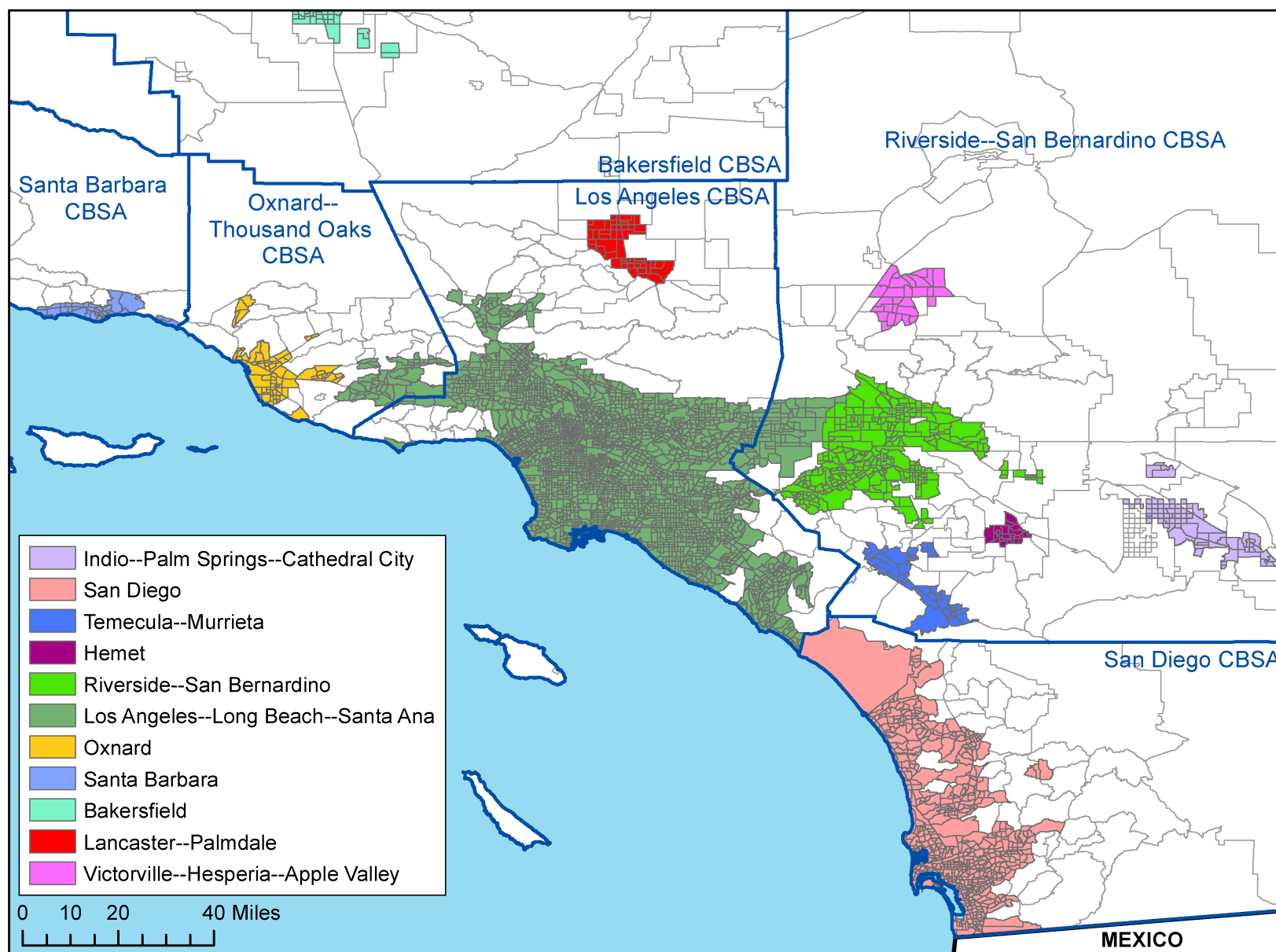
KBUAs from Saint Louis to Kansas City. Blue lines demarcate the borders of metropolitan CBSAs. Gray lines demarcate tract borders.



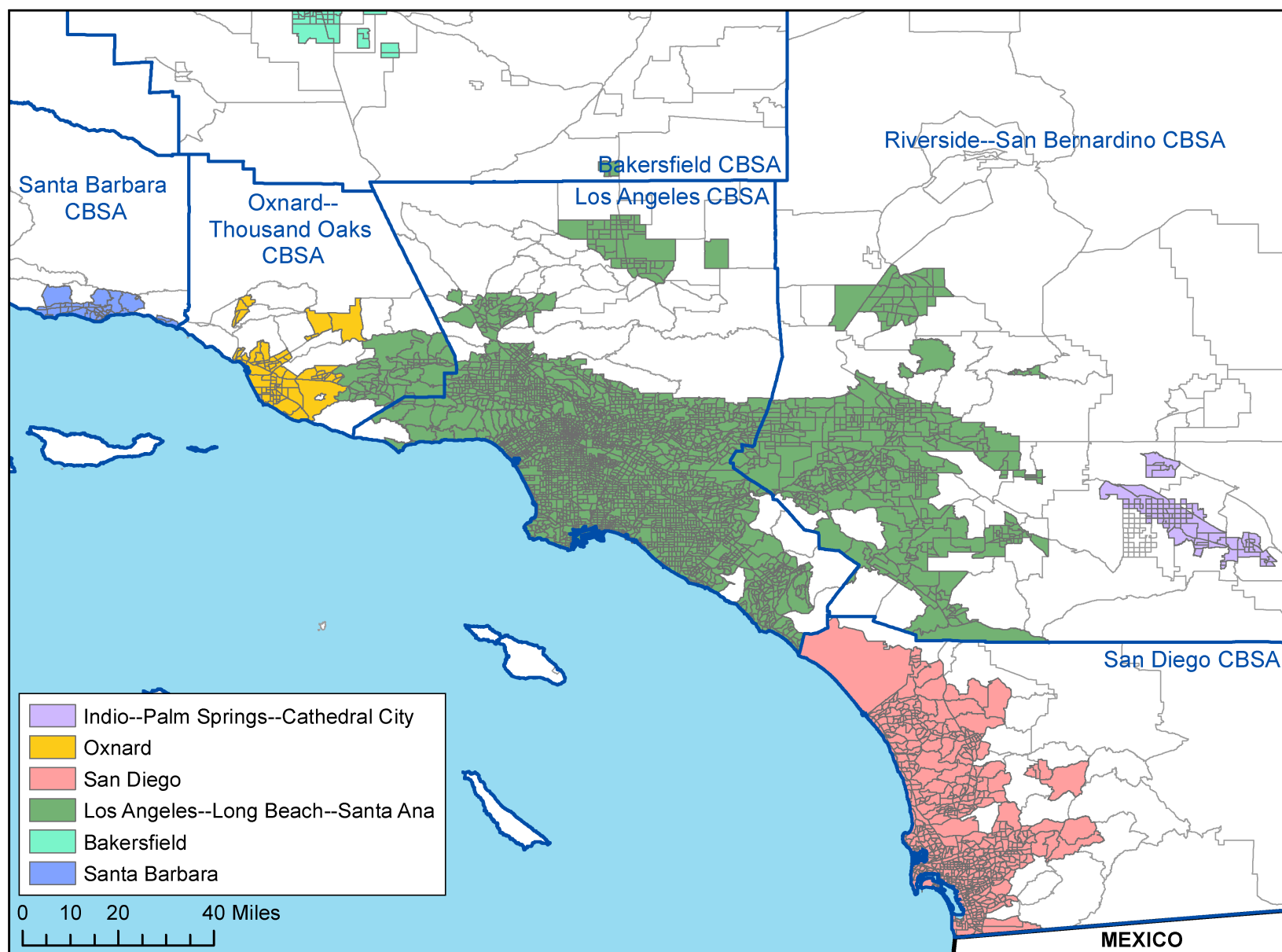
KBMAs from Saint Louis to Kansas City. Blue lines demarcate the borders of metropolitan CBSAs. Gray lines demarcate tract borders.



KBMRs from Saint Louis to Kansas City. Blue lines demarcate the borders of metropolitan CBSAs. Gray lines demarcate tract borders.

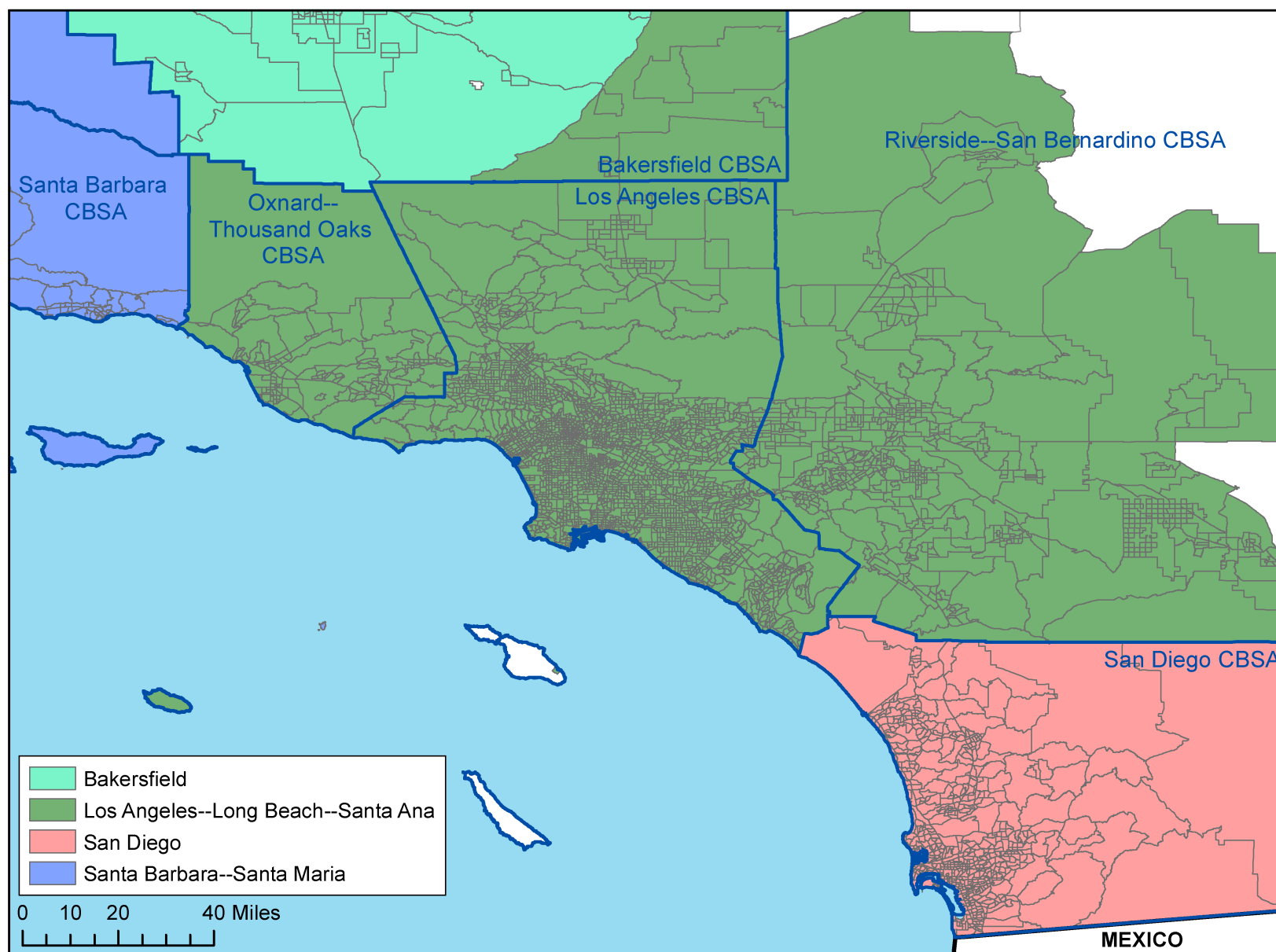


**KBUAs in Southern California.** Blue lines demarcate the borders of metropolitan CBSAs. Gray lines demarcate tract borders.



**KBMAs in Southern California.** Blue lines demarcate the borders of metropolitan CBSAs. Gray lines demarcate tract borders.





**KBMRs in Southern California.** Blue lines demarcate the borders of metropolitan CBSAs. Gray lines demarcate tract borders. The inclusion of several Channel Islands in KBMRs reflects census tracts that have portions on the mainland.