

Banking CONDITIONS

Providing Tenth District insights on regional and national banks

Second Quarter 2023 Banking Conditions

By Mary Bongers

The Federal Reserve Bank of Kansas City dedicates staff to monitor banking trends nationally and across our seven-state region.

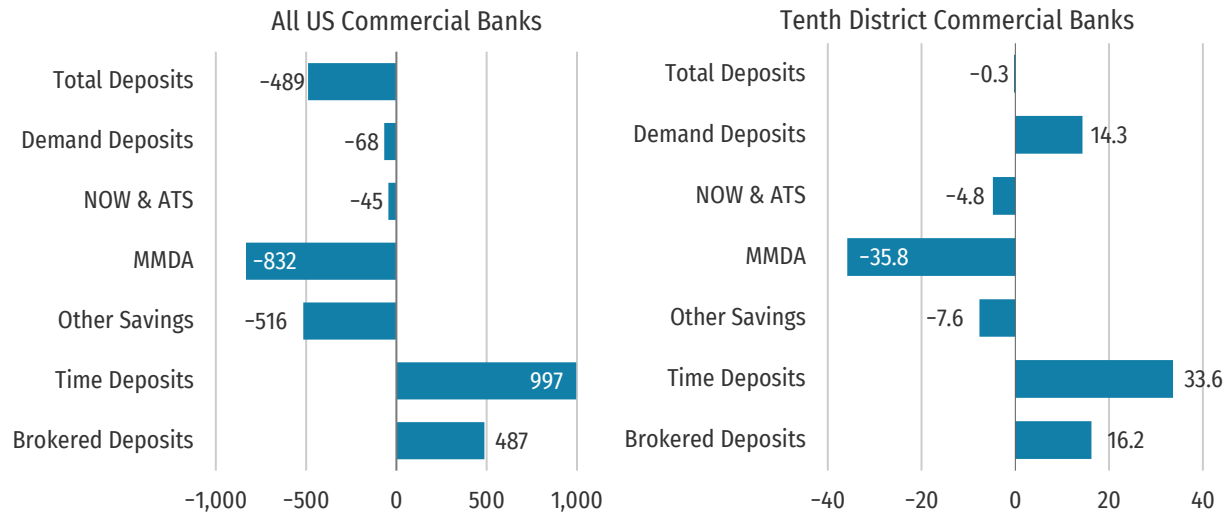
Balance sheets across Tenth District banks continued to grow in the second quarter, driven by loan growth, which totaled almost 12 percent year-over-year (see Chart C9). Loan growth was realized across all major loan types, while liquid assets continued to decline (see Charts C3 and C4). After adding a significant amount of cash and due from balances in the first quarter, banks are again letting cash and due from items run off the balance sheet, with an 8 percent decline year-over-year (see Chart C16). Investment securities are also declining, down 6 percent year-over-year (see Chart C14), and banks have increased pledging of securities to secure funding options. As a result, the liquid asset ratio decreased to a 15-year low of 13.7 percent (see Charts D7 and D9). Further, asset-based liquidity continues to be hindered by large levels of unrealized losses on securities, which increased to 27 percent of Tier 1 capital.

Banks continue to fund growth in large part through noncore borrowing sources (see Charts D10 and D12). Federal Home Loan Bank (FHLB) funding remains widely utilized, and while institutions have largely shed Discount Window borrowings taken on in the first quarter, banks continue to utilize Bank Term Funding Program (BTFP) borrowings. Borrowings have also been used to fund declining deposit levels (see Chart C3). Deposit runoff has increased across District banks, with 74 percent of banks experiencing a decrease in core deposits quarter-over-quarter. Smaller District banks (under \$250MM in assets) saw the greatest level of runoff with a median decline in core deposits of 2.4 percent during the quarter. Deposit growth has been seen almost exclusively in time deposits and brokered deposits, which are generally more costly funding options (see Supplemental Chart 1).

Earnings declined during the quarter, with an ROAA of 1.2 percent across District banks, driven by continued compression in the net interest margin (NIM) (see Charts A4 and A6). Cost of funds continues to increase rapidly and is now at a 15-year high, totaling 1.7 percent compared to 0.2 percent in the same quarter last year, as a result of both the rising rate environment and shifts to higher cost funding sources. Though rising rates and loan growth have benefitted yields on assets, gains in interest income have been outpaced by the increase in interest expense (see Supplemental Chart 2). Other earnings components, namely noninterest income and expense items, remain relatively stable (see Chart A9). Provision expenses continue to increase (see Chart B2), though current credit quality remains sound (see Chart B5).

Mary Bongers is a risk specialist in the Division of Supervision and Risk Management at the Federal Reserve Bank of Kansas City.

Supplemental Chart 1. Change in Deposits Year-Over-Year, in Billions



Supplemental Chart 2. Net Interest Margin Components

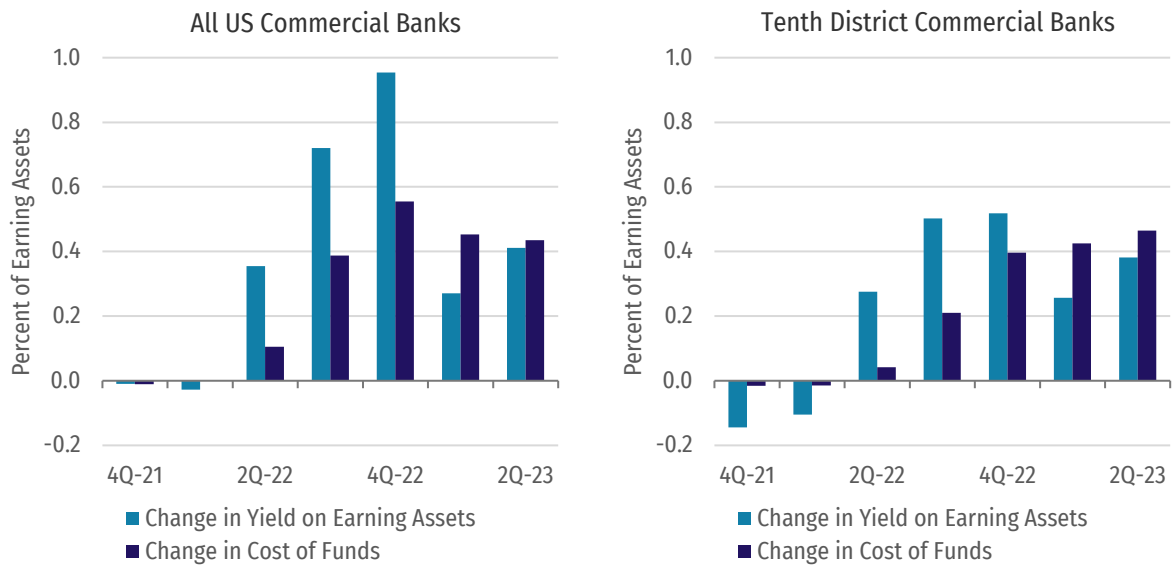


Table of Contents

Select links below to advance to specific charts. Technical notes and a glossary of terms are provided in the [appendix](#).

Banking System Overview

[All U.S. Commercial Banks](#)

[Tenth District Commercial Banks](#)

Section A. Capital and Earnings

Leverage Ratio

[All U.S. Commercial Banks](#)

[Tenth District Commercial Banks](#)

Quarterly Dividend Trends

Return on Average Assets Summary

Return on Average Assets

[All U.S. Commercial Banks](#)

[Tenth District Commercial Banks](#)

Quarterly Revenue Trends

YTD Change in Income and Expense Items

[All U.S. Commercial Banks](#)

[Tenth District Commercial Banks](#)

Net Interest Margin

[All U.S. Commercial Banks](#)

[Tenth District Commercial Banks](#)

Interest Income

[All U.S. Commercial Banks](#)

[Tenth District Commercial Banks](#)

Noninterest Income

[All U.S. Commercial Banks](#)

[Tenth District Commercial Banks](#)

Noninterest Expense

[All U.S. Commercial Banks](#)

[Tenth District Commercial Banks](#)

Section B. Loan Loss Reserves & Credit Conditions

Loan Loss Provisions

[All U.S. Commercial Banks](#)

[Tenth District Commercial Banks](#)

Quarterly Allowance for Loan & Lease Losses Trends

Problem Assets

[All U.S. Commercial Banks](#)

[Tenth District Commercial Banks](#)

Noncurrent CLD and CRE Loans

Noncurrent Loans by Other Loan Types

[All U.S. Commercial Banks](#)

[Tenth District Commercial Banks](#)

Noncurrent Loans by Loan Type, Tenth District States

Texas Ratio

[All U.S. Commercial Banks](#)

[Tenth District Commercial Banks](#)

Coverage Ratio

[All U.S. Commercial Banks](#)

[Tenth District Commercial Banks](#)

Section C. Balance Sheet Composition

Loan Portfolio Breakdown

[All U.S. Commercial Banks](#)

[Tenth District Commercial Banks](#)

Balance Sheet Shifts

Change in Loan Portfolio Composition

Loans to Assets

[All U.S. Commercial Banks](#)

[Tenth District Commercial Banks](#)

Loans to Assets, Tenth District States

Year-Over-Year Loan Growth

[All U.S. Commercial Banks](#)

[Tenth District Commercial Banks](#)

Year-Over-Year Loan Growth by Loan Type

[All U.S. Commercial Banks](#)

[Tenth District Commercial Banks](#)

Quarterly Investment Securities Trends

Investment Securities

[All U.S. Commercial Banks](#)

[Tenth District Commercial Banks](#)

Cash and Reserve Holdings

[All U.S. Commercial Banks](#)

[Tenth District Commercial Banks](#)

Section D. Maturity and Funding

Loan Portfolio Maturity and Repricing Distribution

[All U.S. Commercial Banks](#)

[Tenth District Commercial Banks](#)

Securities Portfolio Maturity and Repricing Distribution

[All U.S. Commercial Banks](#)

[Tenth District Commercial Banks](#)

Loan-to-Deposit Ratios

[All U.S. Commercial Banks](#)

[Tenth District Commercial Banks](#)

Quarterly Liquid Asset Trends

Liquid Asset Ratios

[All U.S. Commercial Banks](#)

[Tenth District Commercial Banks](#)

Quarterly Wholesale Funding Trends

Wholesale Funding Ratios

[All U.S. Commercial Banks](#)

[Tenth District Commercial Banks](#)

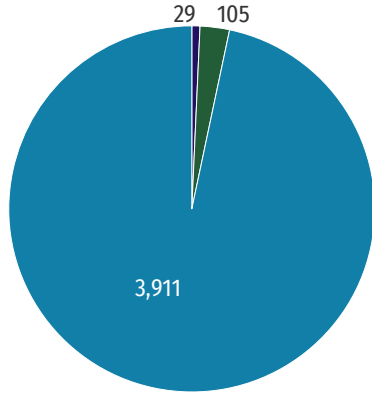
Select Ratios by Tenth District State

Banking Institutions Overview

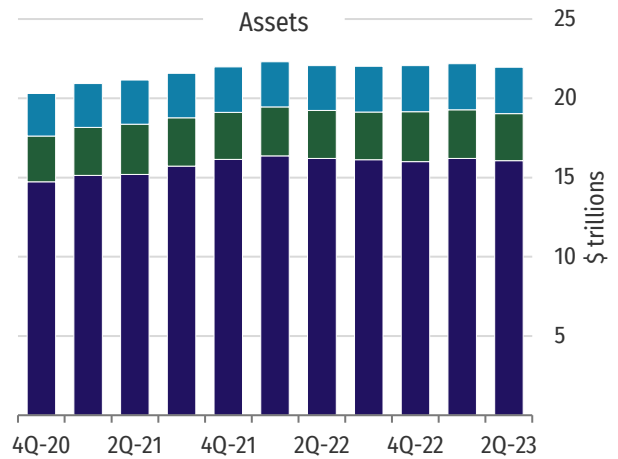
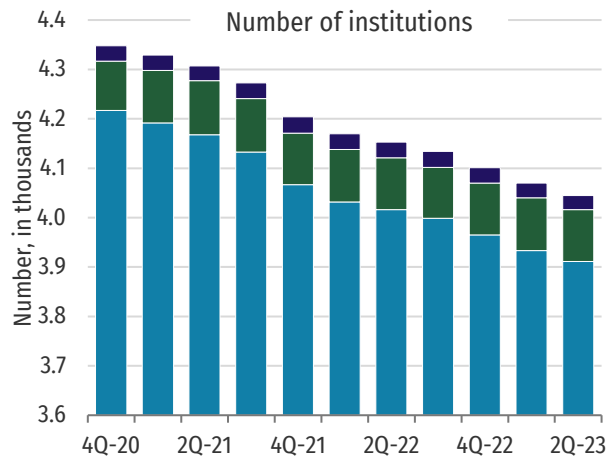
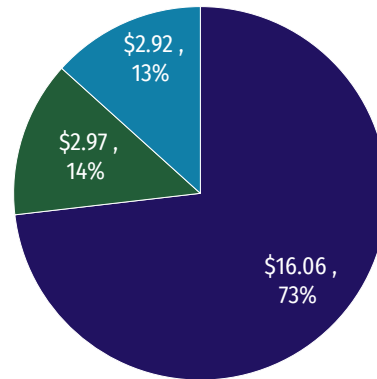
All U.S. Commercial Banks

Large banks Regional banks Community banks

Number of institutions



Assets, in trillions

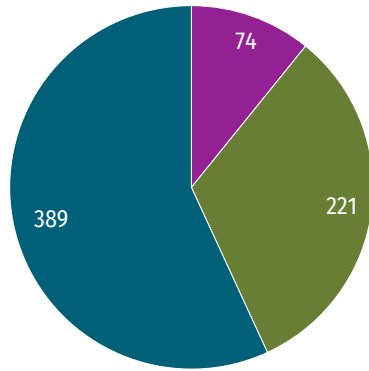


Banking Institutions Overview

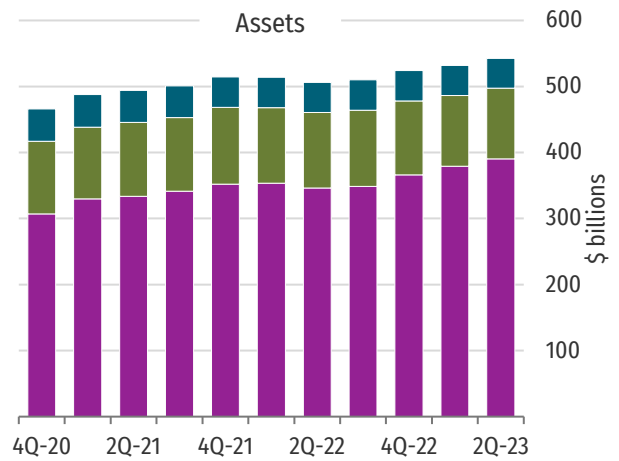
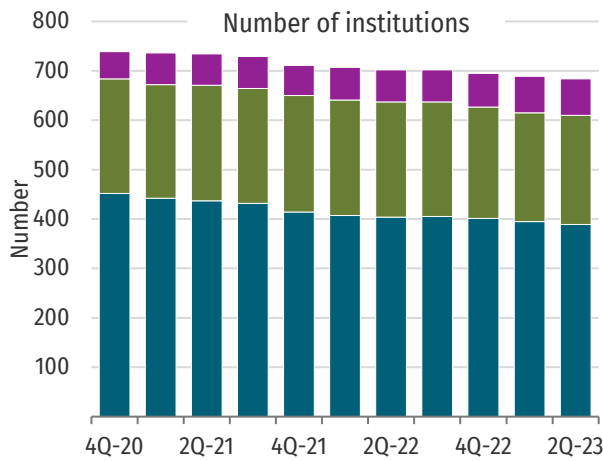
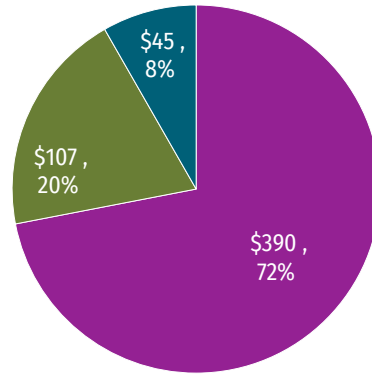
Tenth District Commercial Banks

Above \$1 bn \$250 mm - \$1 bn Under \$250 mm

Number of institutions



Assets, in billions



A. Capital and Earnings

- Net interest margins compressed during the quarter as a result of rising costs of funds despite gains in yields on assets.
- Capital growth kept pace with the increasing size of balance sheets.

Chart A1. Leverage Ratio, All U.S. Commercial Banks

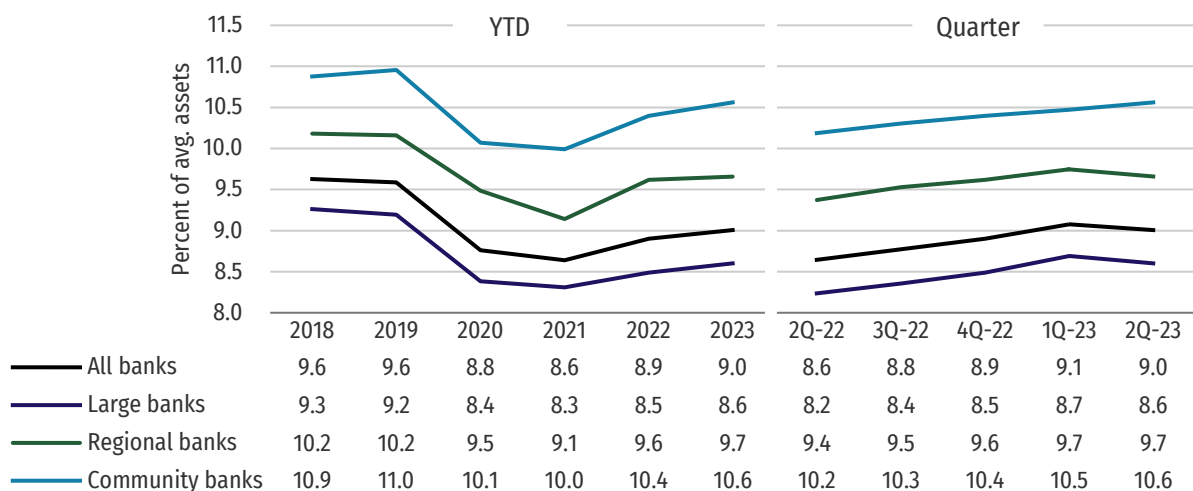


Chart A2. Leverage Ratio, Tenth District Commercial Banks

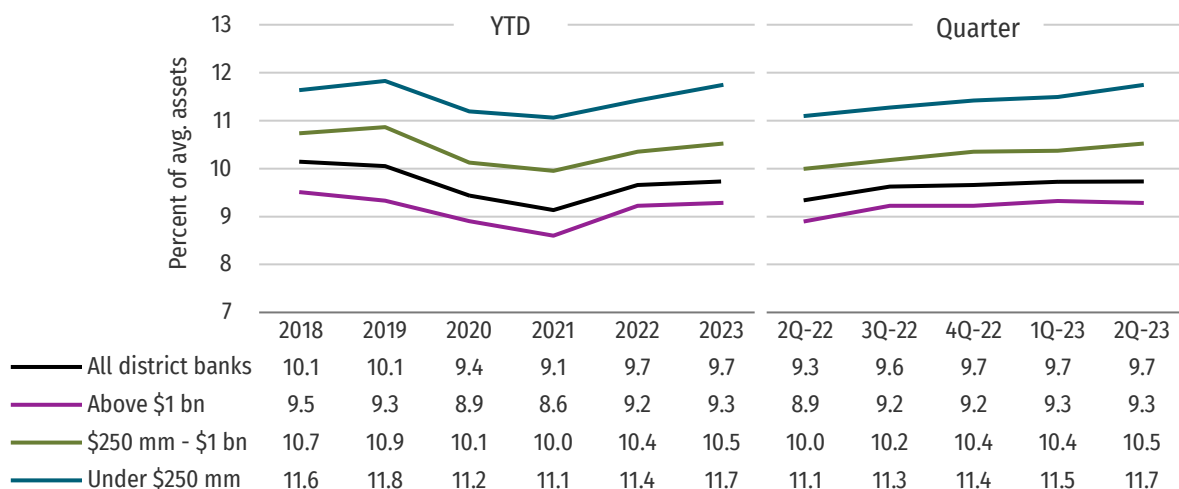


Chart A3. Quarterly Dividend Trends

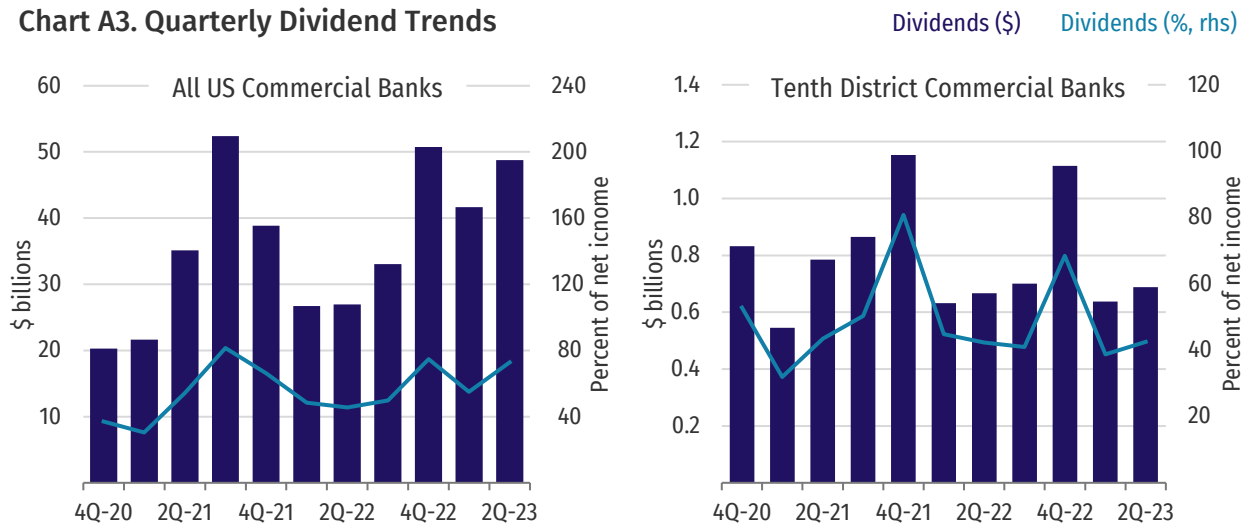


Chart A4. Return on Average Assets Summary

	All US Commercial Banks				y/y change	q/q change	Tenth District Commercial Banks				y/y change	q/q change
	4Q-19	4Q-20	4Q-21	4Q-22			4Q-19	4Q-20	4Q-21	4Q-22		
Net interest income	3.00	2.53	2.29	2.64	▲ 0.83	▲ 0.35	3.54	3.22	3.00	3.17	▲ 0.58	▲ 0.13
Noninterest income	1.51	1.38	1.34	1.25	▼ (0.12)	▼ (0.17)	1.21	1.30	1.16	0.97	▼ (0.13)	▼ (0.03)
Total revenue	4.51	3.91	3.64	3.88	▲ 0.72	▲ 0.18	4.75	4.52	4.16	4.14	▲ 0.45	▲ 0.09
Provisions	0.29	0.64	(0.14)	0.20	▲ 0.37	▲ 0.14	0.24	0.40	0.02	0.14	▲ 0.16	▲ 0.02
Noninterest expense	2.61	2.43	2.25	2.27	▲ 0.07	▲ 0.02	2.96	2.77	2.53	2.50	▲ 0.08	▲ 0.12
Total expenses	2.90	3.07	2.11	2.47	▲ 0.44	▲ 0.16	3.20	3.17	2.55	2.64	▲ 0.24	▲ 0.14
Pre-tax operating income	1.61	0.83	1.53	1.41	▲ 0.28	▲ 0.02	1.54	1.35	1.61	1.50	▲ 0.22	▼ (0.05)
Net Income	1.29	0.70	1.23	1.11	▲ 0.15	▲ 0.03	1.30	1.20	1.36	1.22	▲ 0.11	▼ (0.08)

Chart A5. Return on Average Assets, All U.S. Commercial Banks

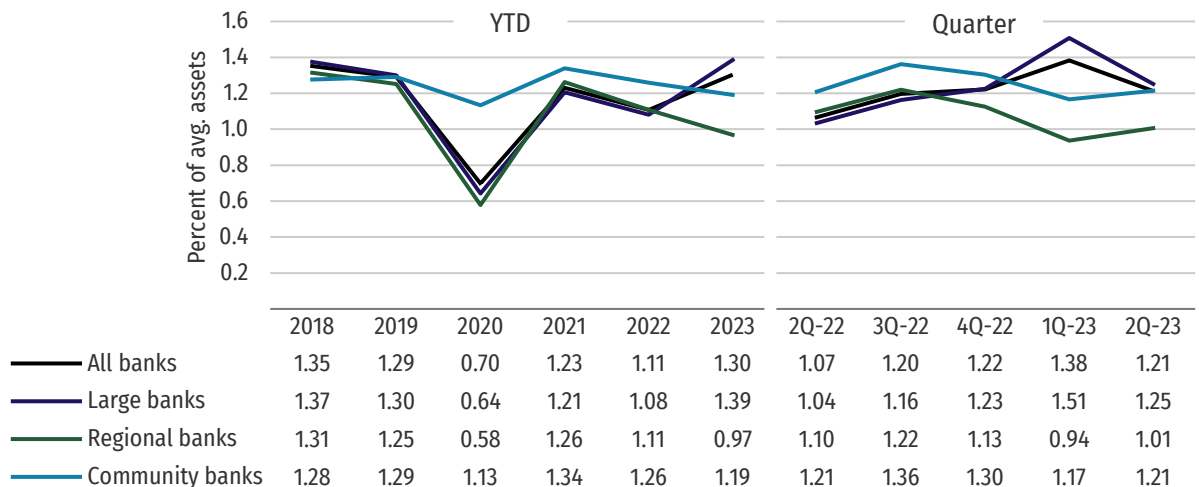


Chart A6. Return on Average Assets, Tenth District Commercial Banks

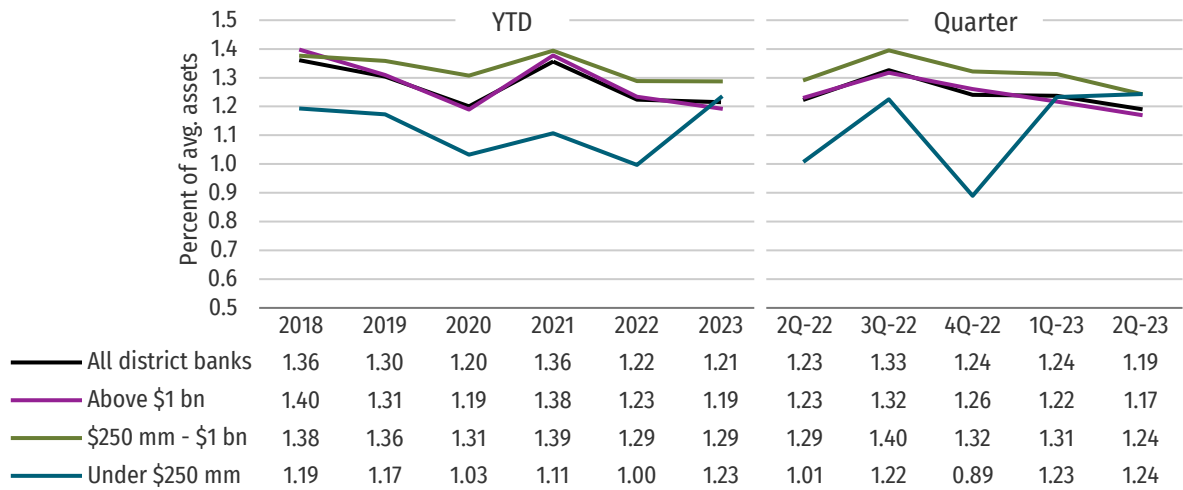


Chart A7. Quarterly Revenue Trends

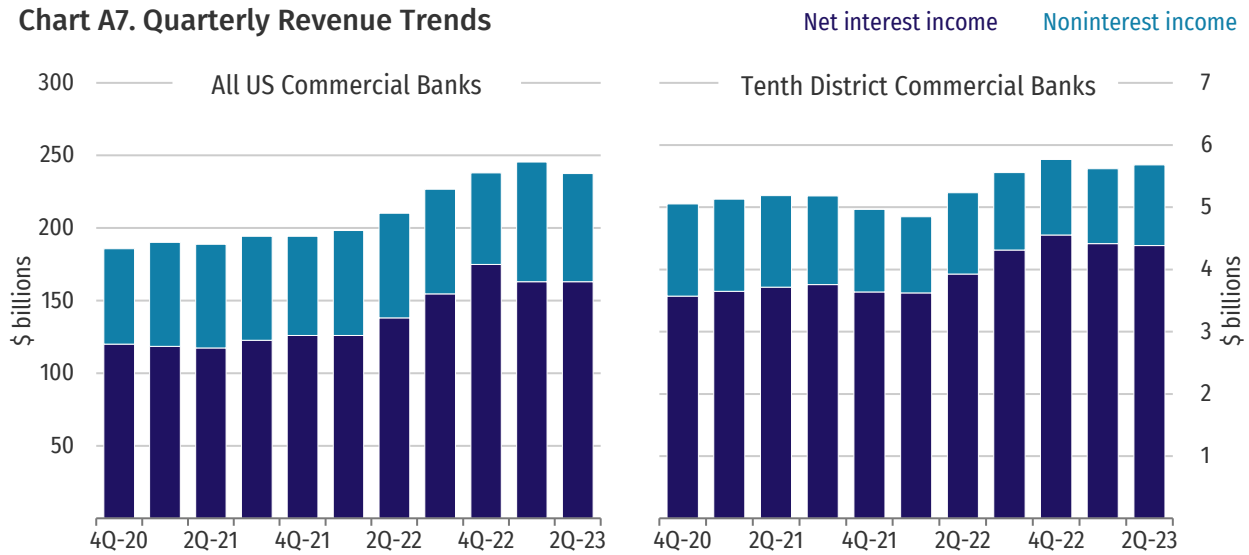


Chart A8. Year-Over-Year Change in Income & Expense Items, All U.S. Commercial Banks

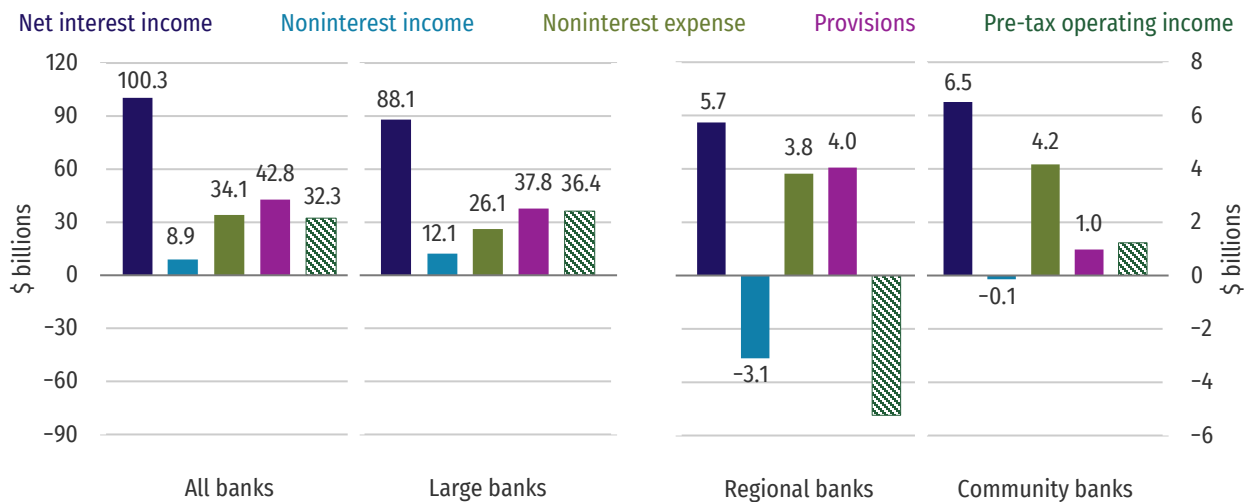


Chart A9. Year-Over-Year Change in Income & Expense Items, Tenth District Commercial Banks

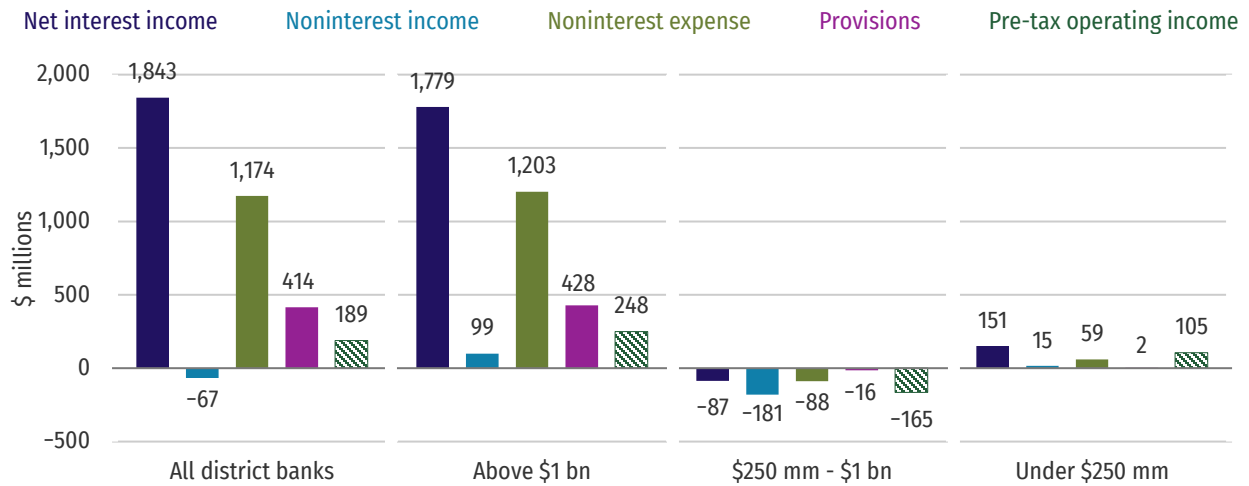


Chart A10. Net Interest Margin, All U.S. Commercial Banks

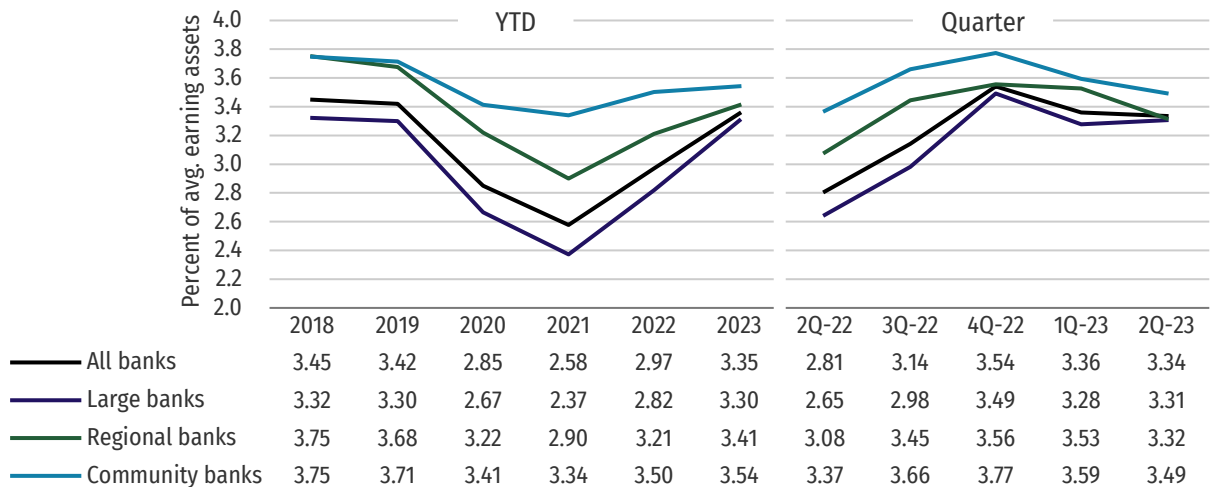


Chart A11. Net Interest Margin, Tenth District Commercial Banks

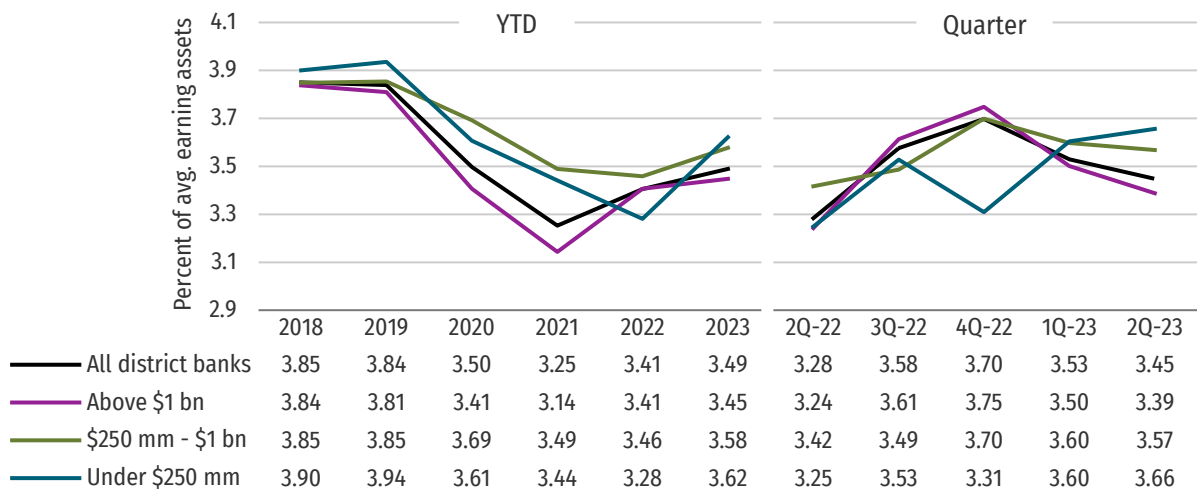


Chart A12. Interest Income, All U.S. Commercial Banks

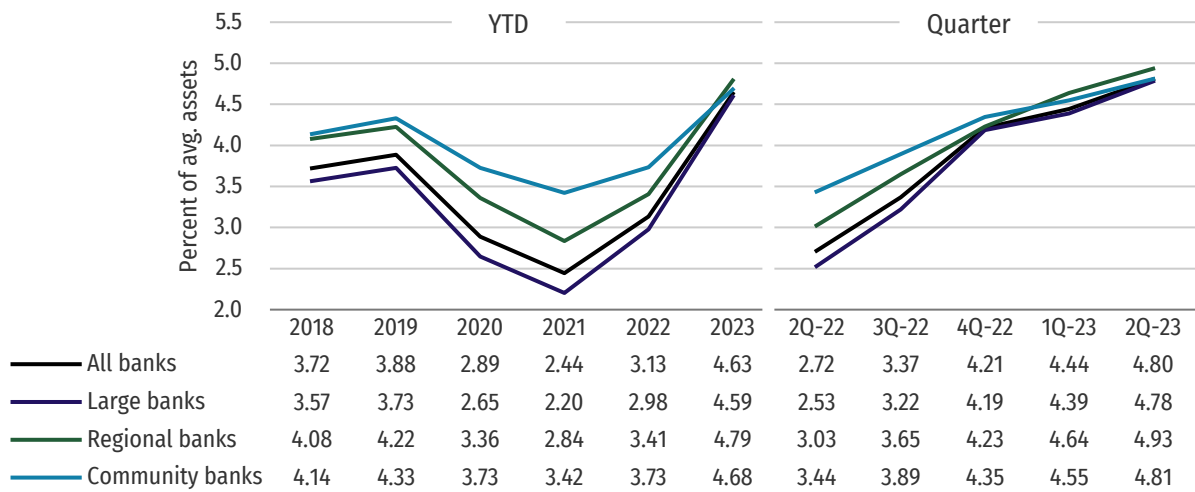


Chart A13. Interest Income, Tenth District Commercial Banks

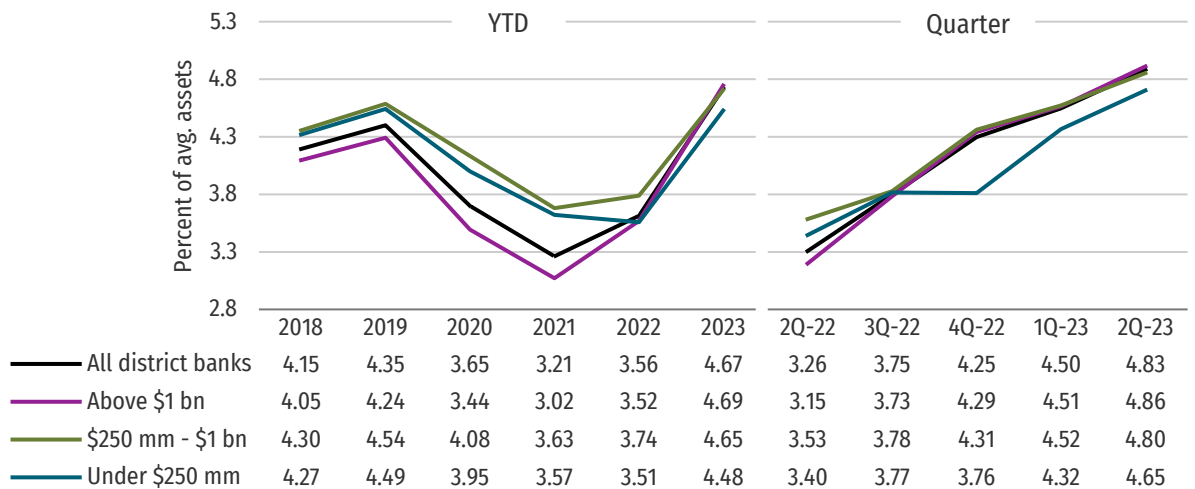


Chart A14. Noninterest Income, All U.S. Commercial Banks

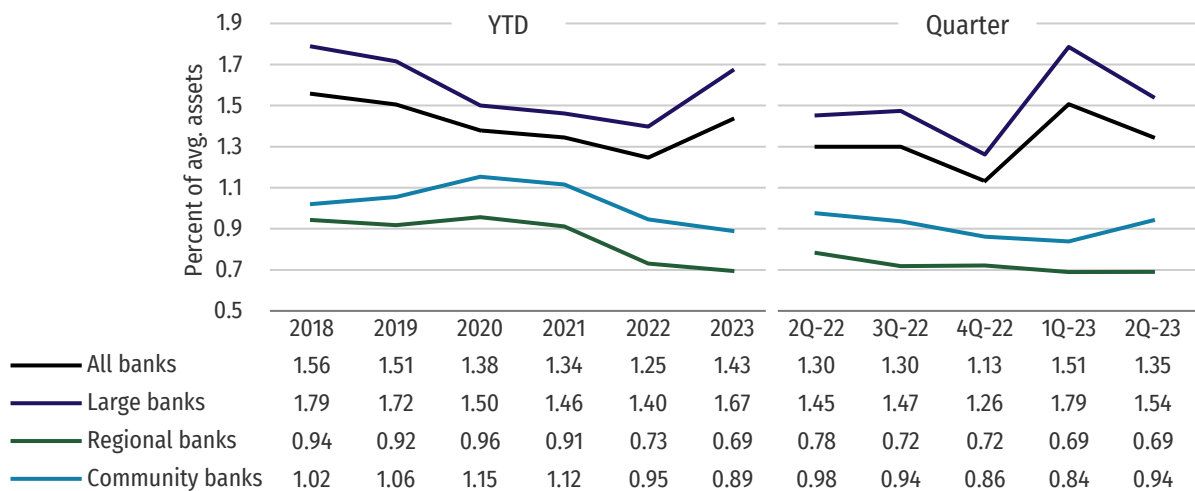


Chart A15. Noninterest Income, Tenth District Commercial Banks

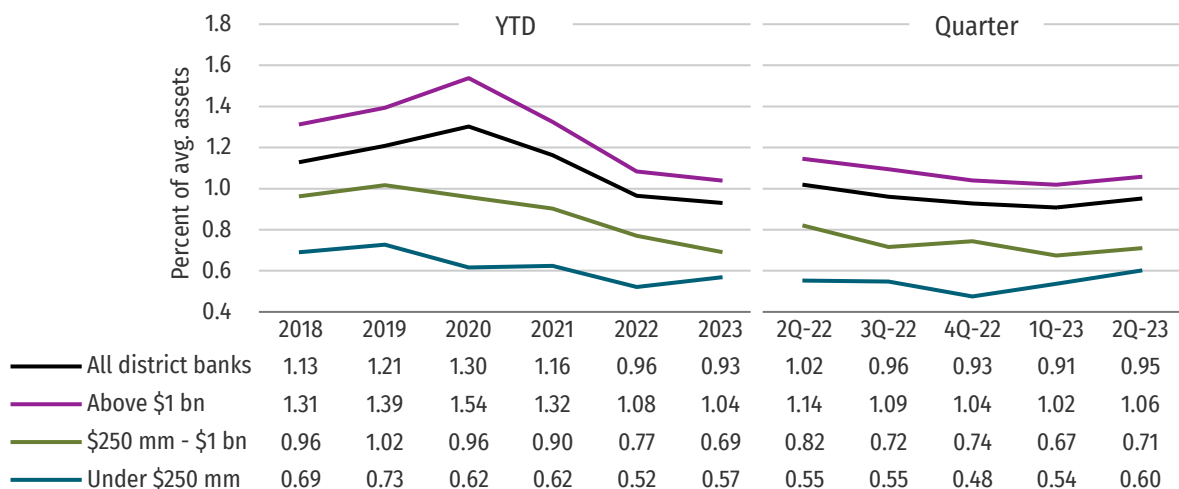


Chart A16. Noninterest Expense, All U.S. Commercial Banks

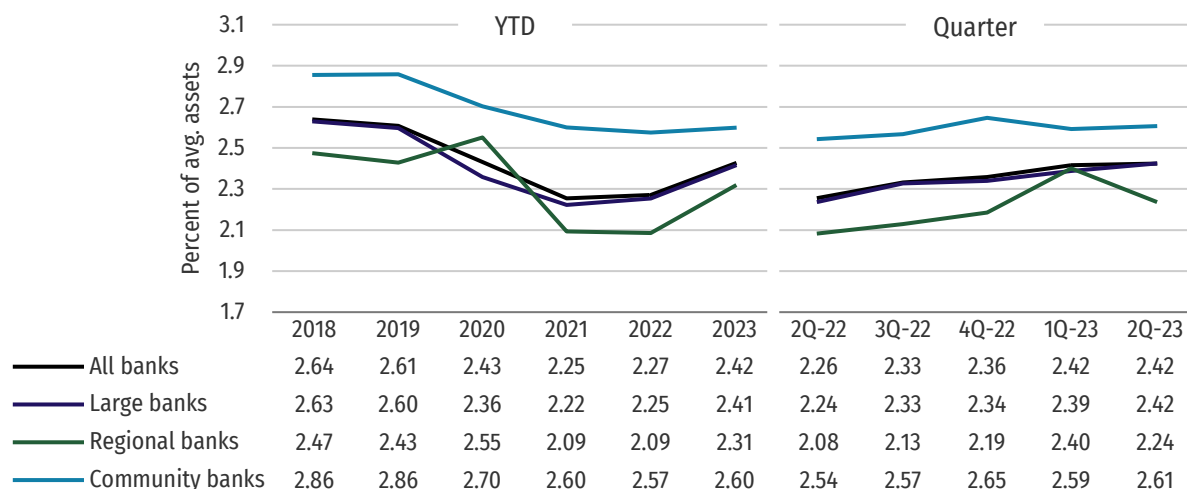
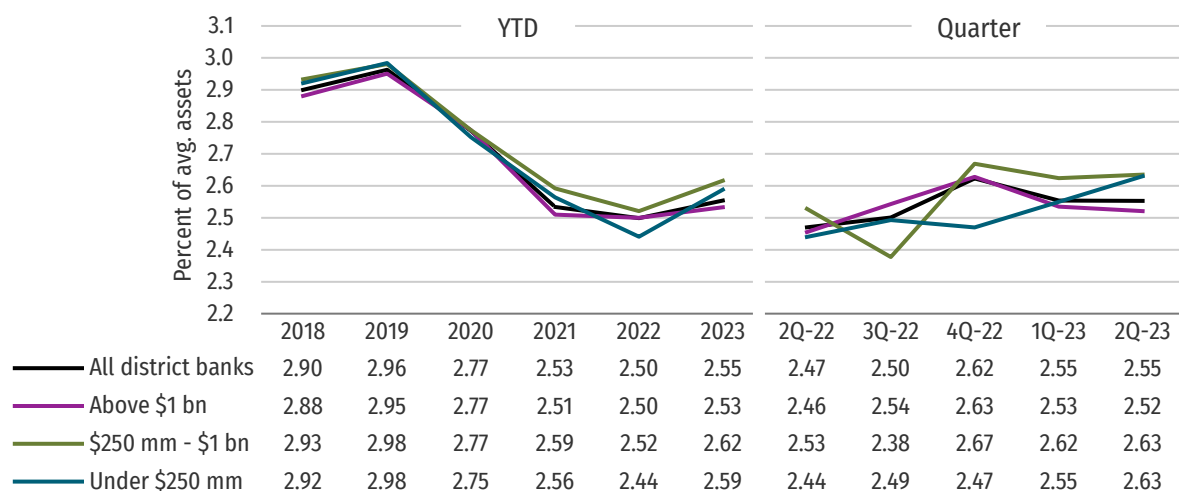


Chart A17. Noninterest Expense, Tenth District Commercial Banks



B. Loan Loss Reserves and Credit Conditions

- Problem assets remain low across all major loan types, though charge-offs experienced a slight uptick.
- Allowance levels grew to 1.4 percent of total loans as a result of increased provisioning.

Chart B1. Loan Loss Provisions, All U.S. Commercial Banks

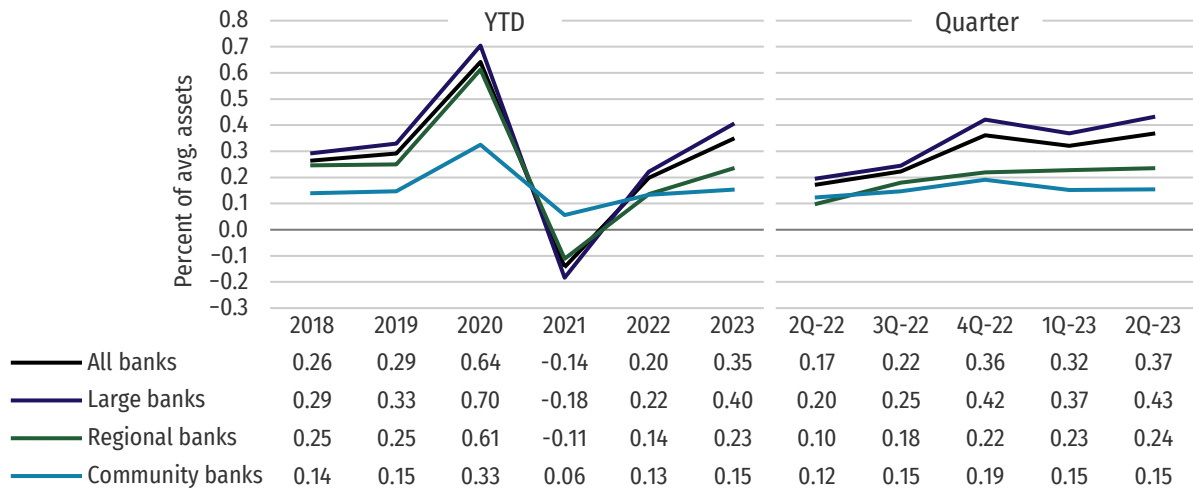


Chart B2. Loan Loss Provisions, Tenth District Commercial Banks

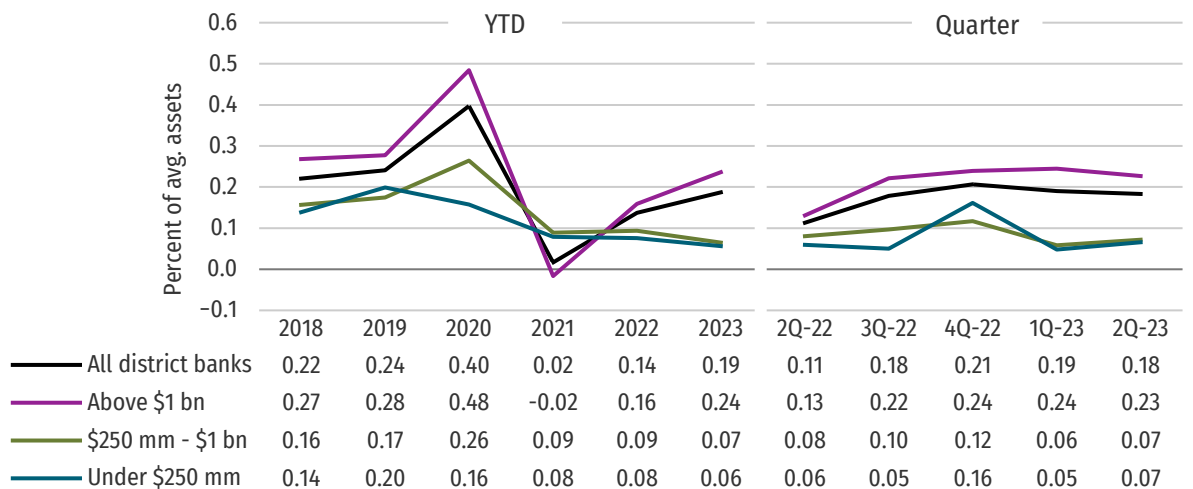


Chart B3. Quarterly Allowance for Loan and Lease Losses Trends Provisions Net chargeoffs

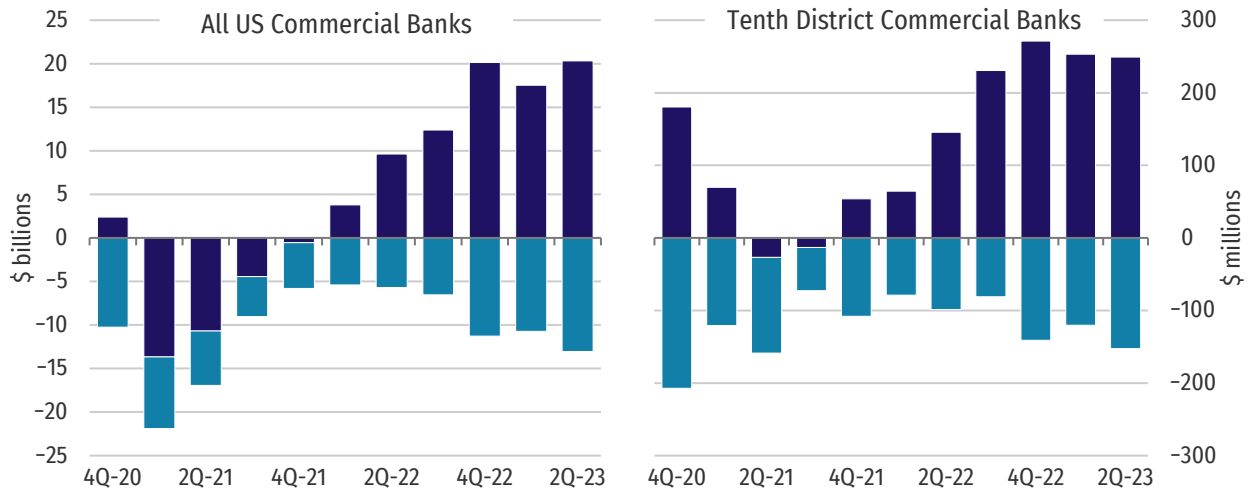


Chart B4. Problem Assets, All U.S. Commercial Banks

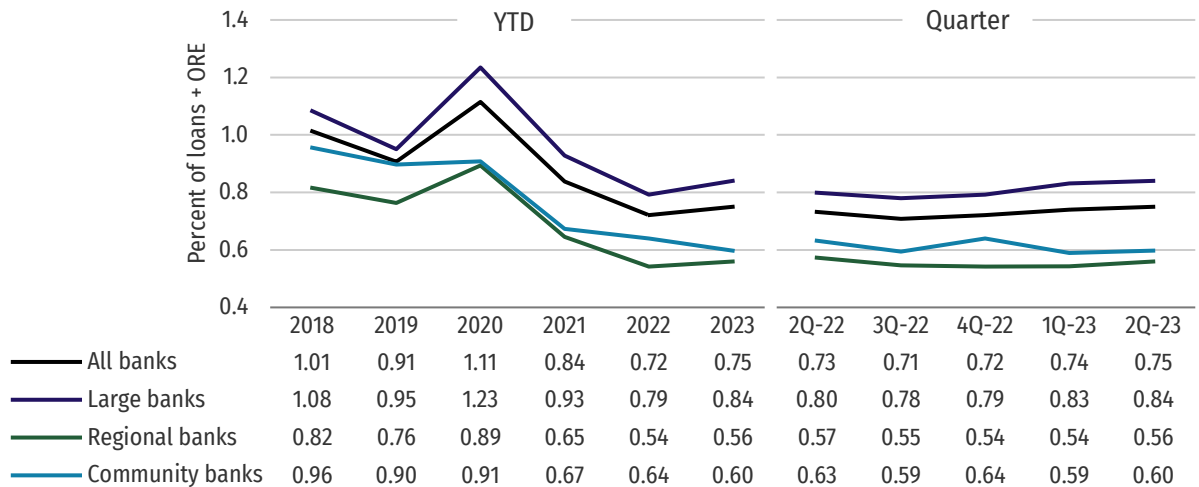


Chart B5. Problem Assets, Tenth District Commercial Banks

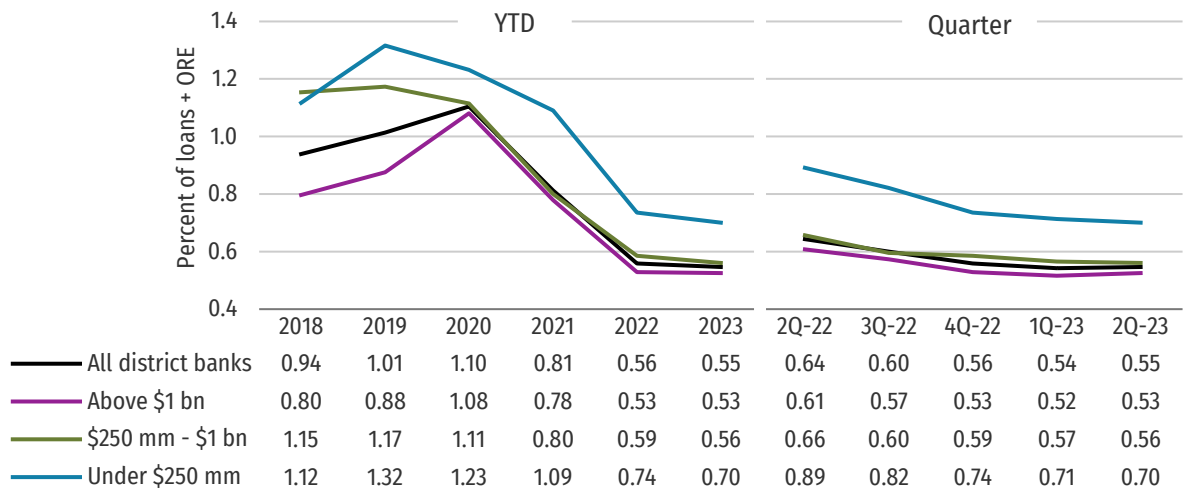


Chart B6. Noncurrent CLD and CRE Loans

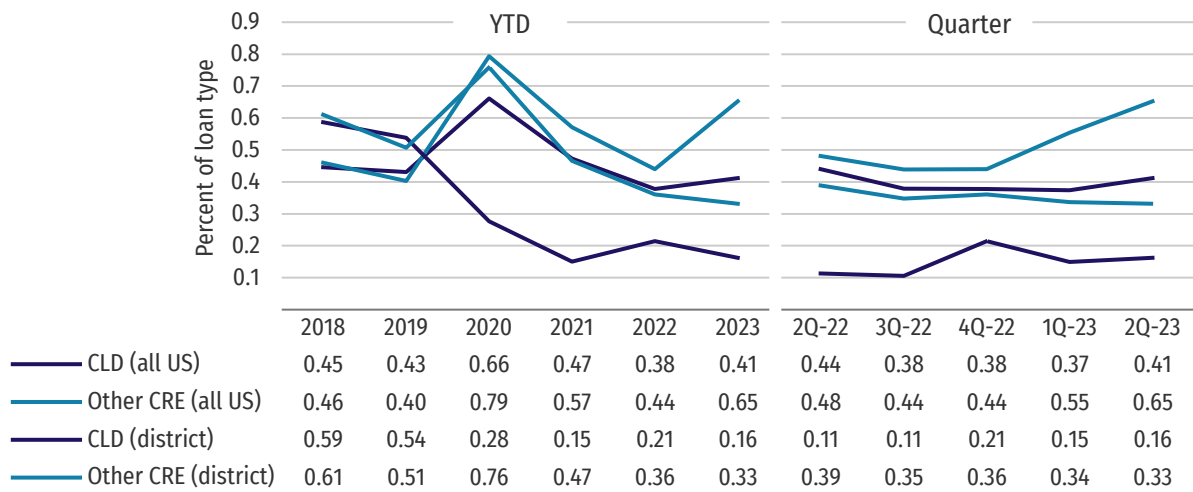


Chart B7. Noncurrent Loans by Other Loan Types, All U.S. Commercial Banks

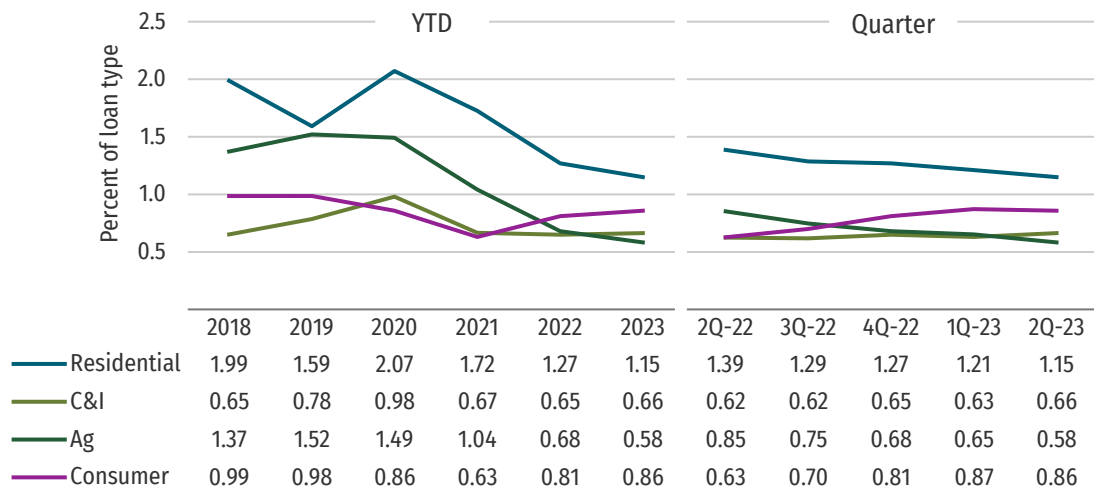


Chart B8. Noncurrent Loans by Other Loan Types, Tenth District Commercial Banks

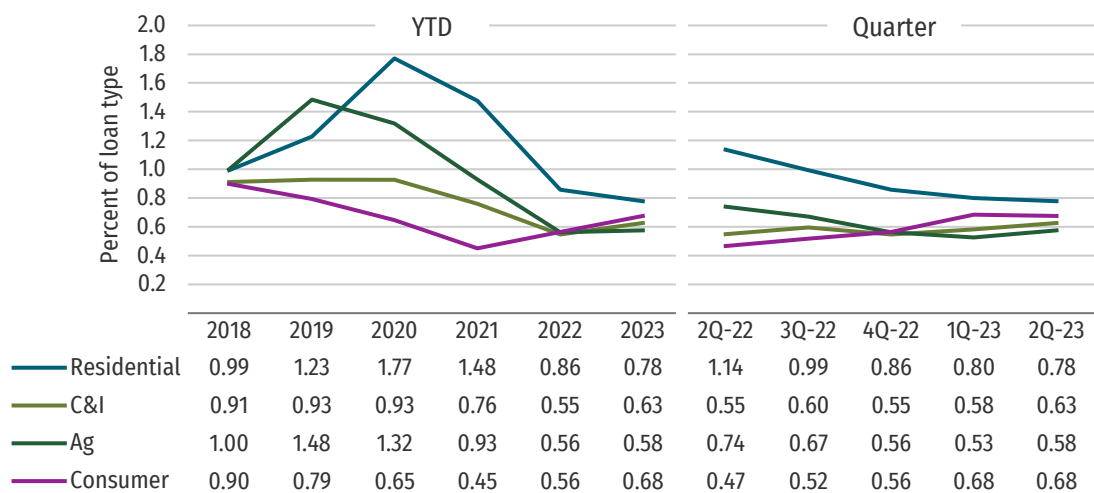


Chart B9. Noncurrent Loans by Loan Type, Tenth District States

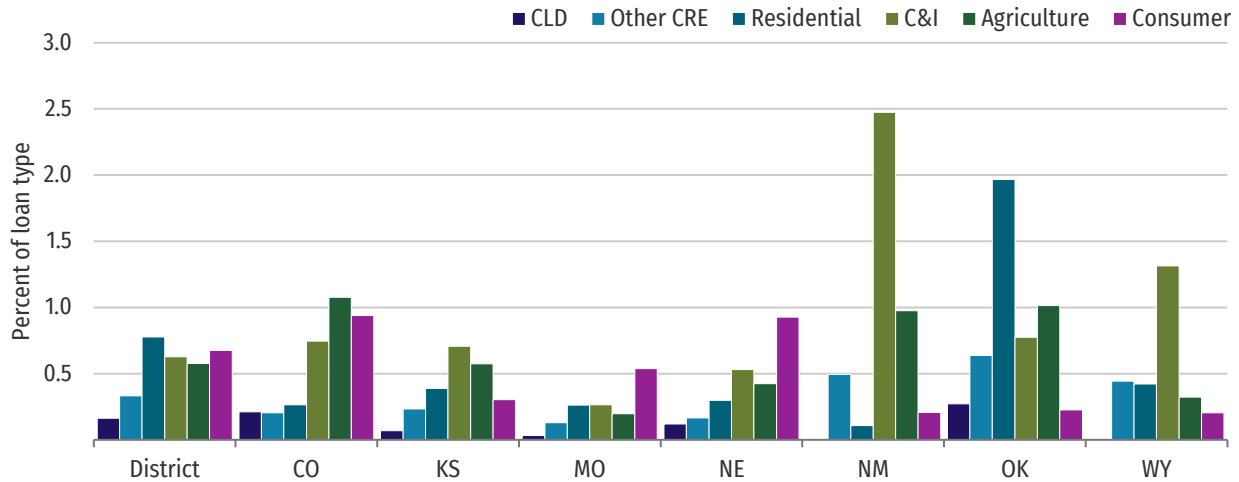


Chart B10. Texas Ratio, All U.S. Commercial Banks

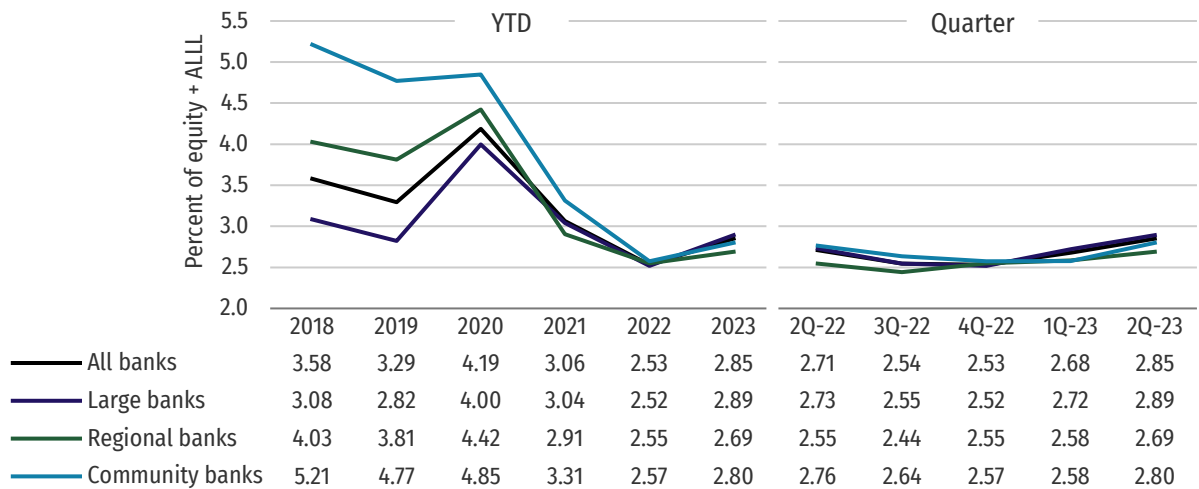


Chart B11. Texas Ratio, Tenth District Commercial Banks

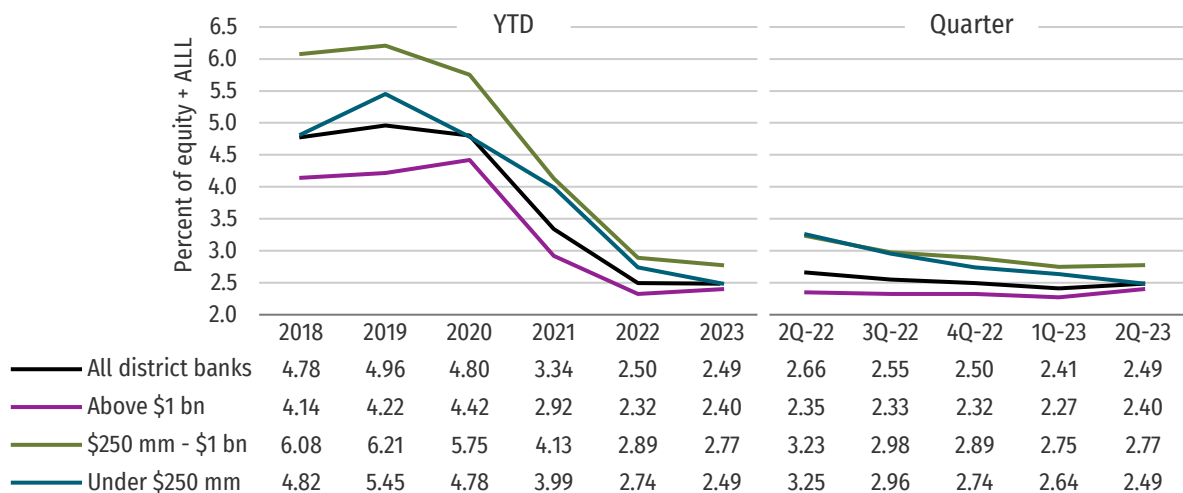


Chart B12. Coverage Ratio, All U.S. Commercial Banks

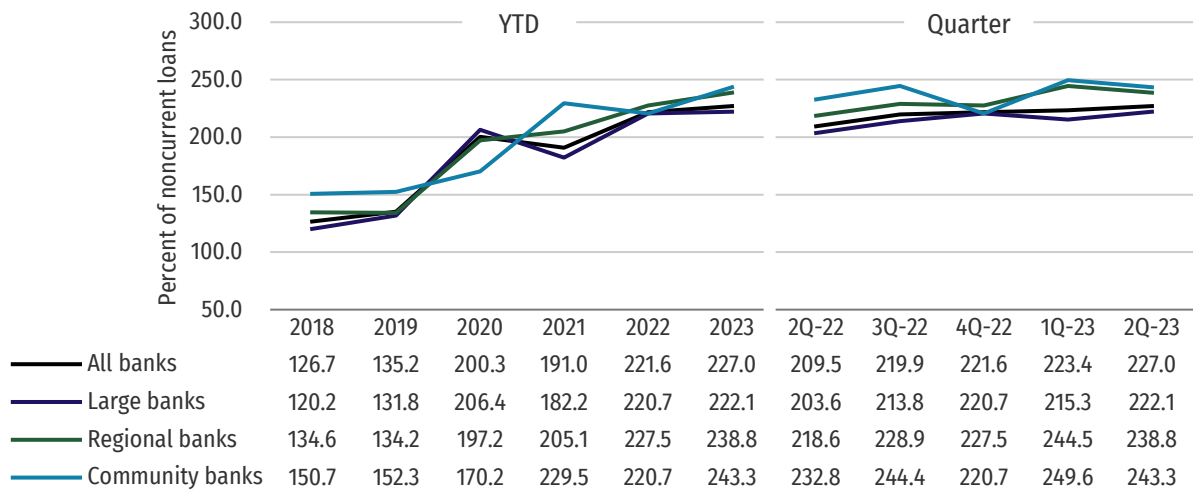
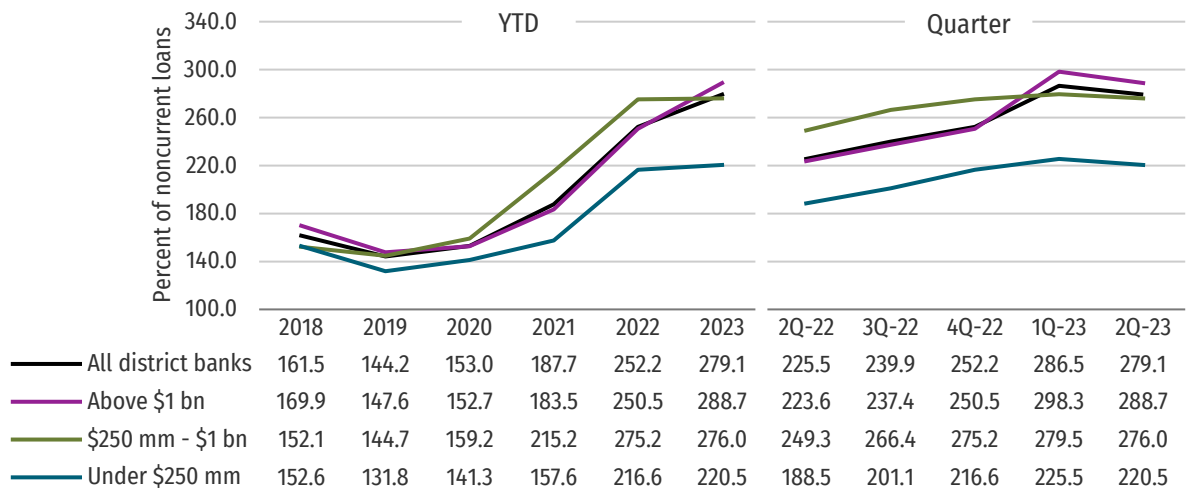


Chart B13. Coverage Ratio, Tenth District Commercial Banks



C. Balance Sheet Composition

- Loan growth has been funded by liquid assets and wholesale borrowings as core deposits have declined across District banks.

Chart C1. Loan Portfolio Breakdown, All U.S. Commercial Banks

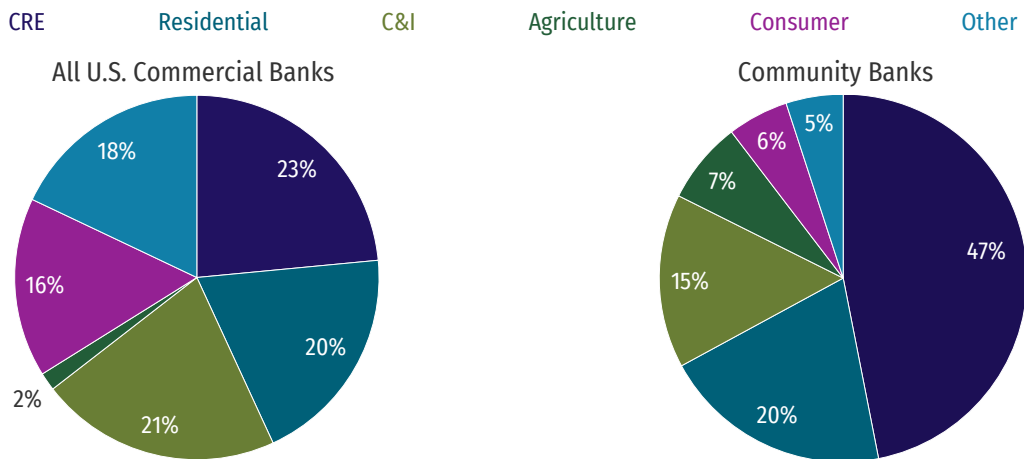


Chart C2. Loan Portfolio Breakdown, Tenth District Commercial Banks

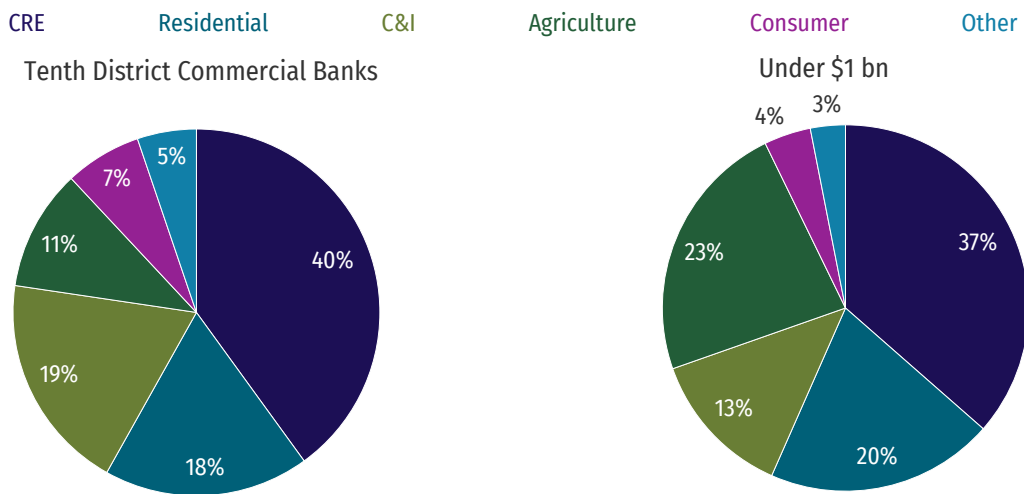


Chart C3. Balance Sheet Shifts, in Billions

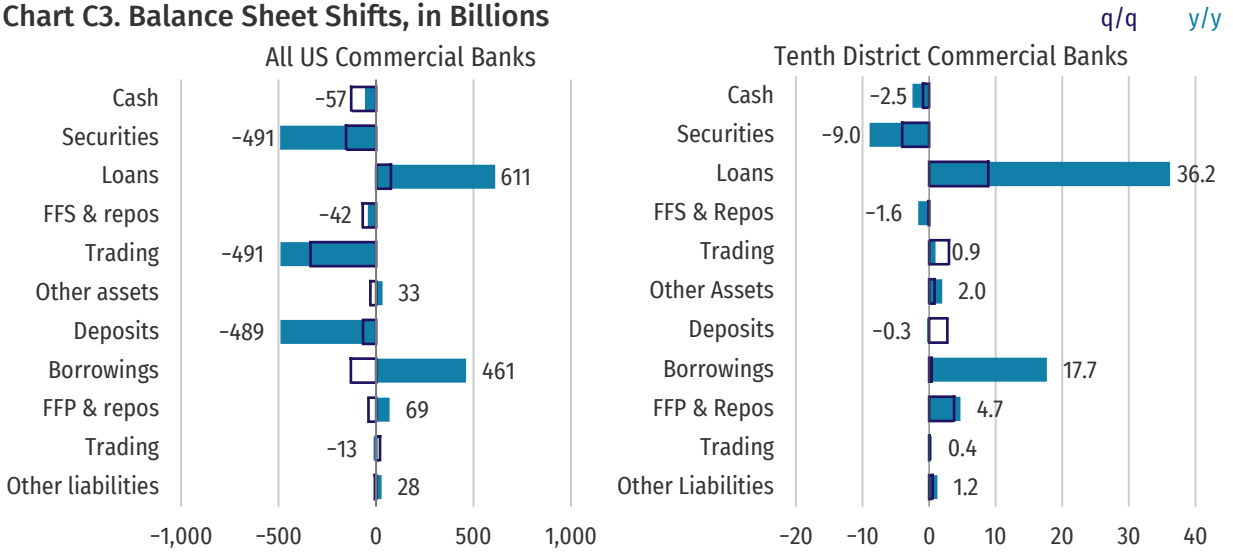


Chart C4. Change in Loan Portfolio Composition, in Billions

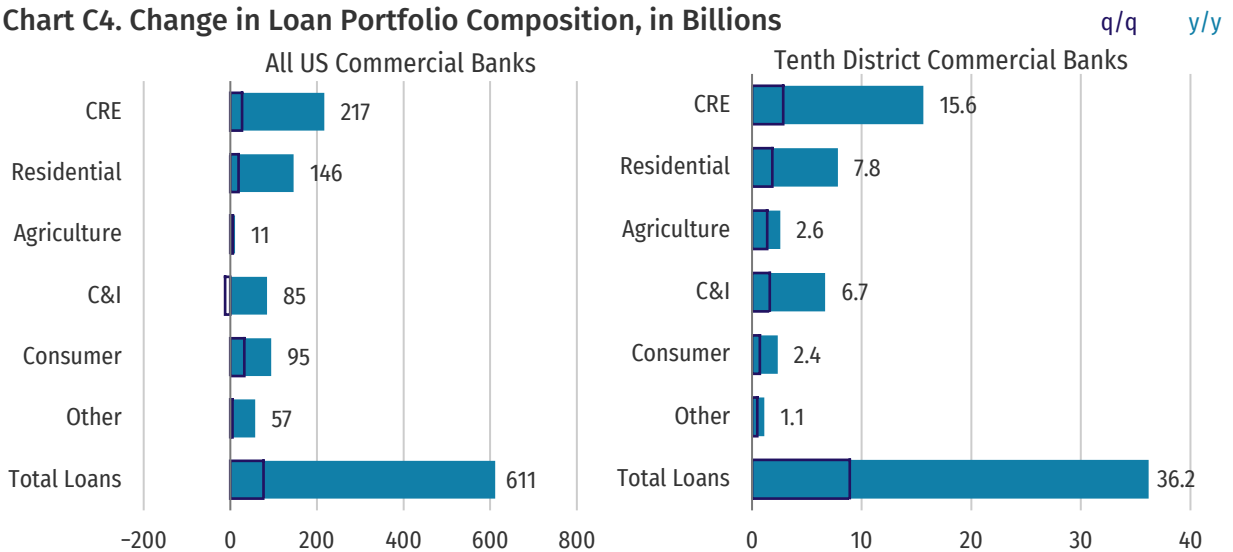


Chart C5. Loans to Assets, All U.S. Commercial Banks

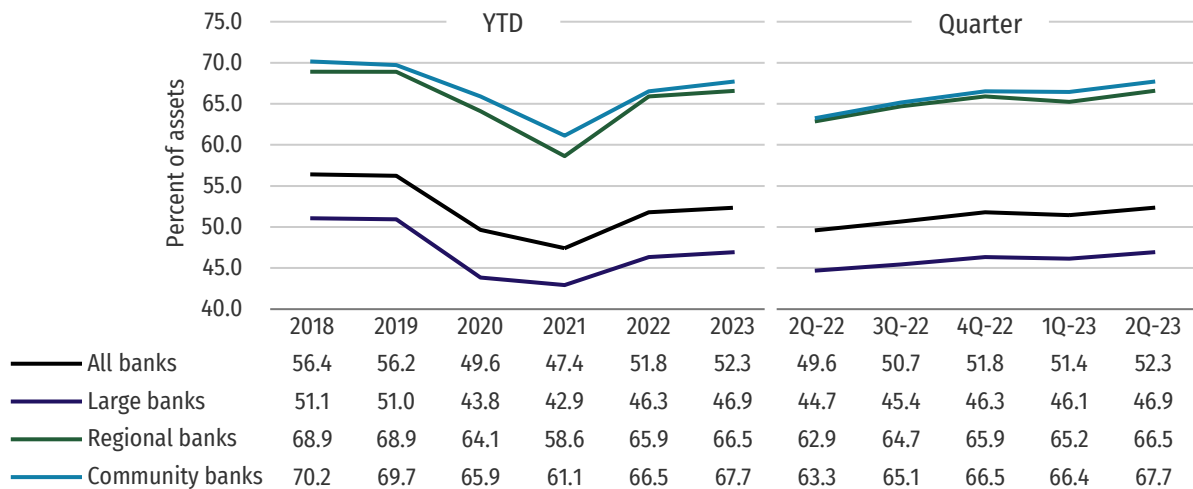


Chart C6. Loans to Assets, Tenth District Commercial Banks

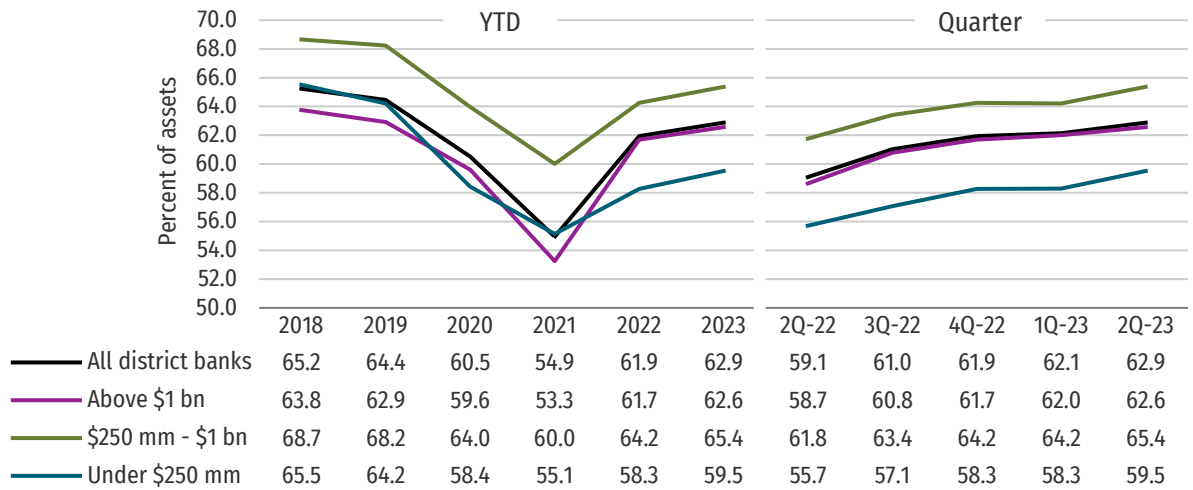


Chart C7. Loans to Assets, Tenth District States

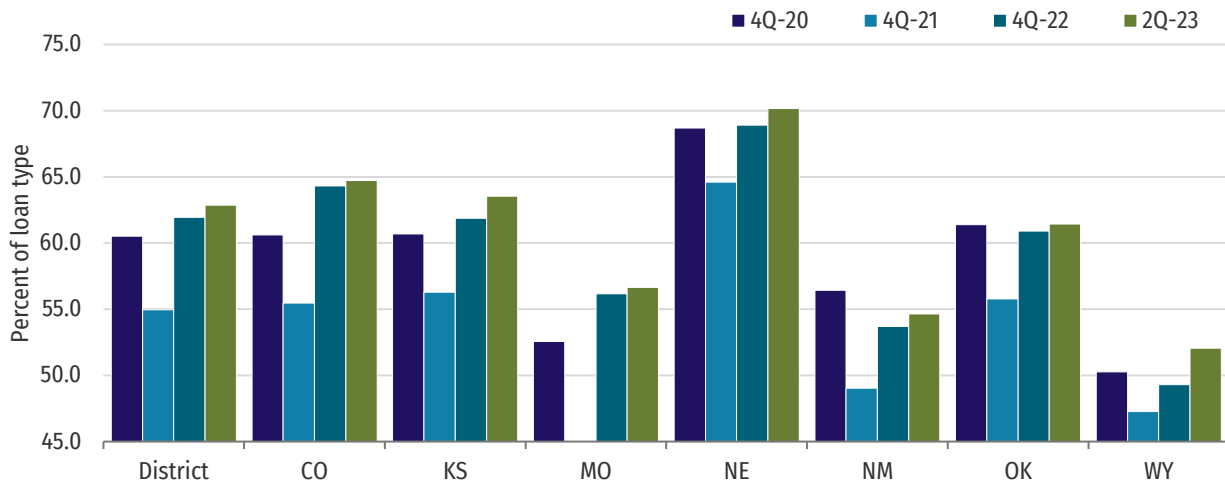


Chart C8. Year-Over-Year Loan Growth, All U.S. Commercial Banks

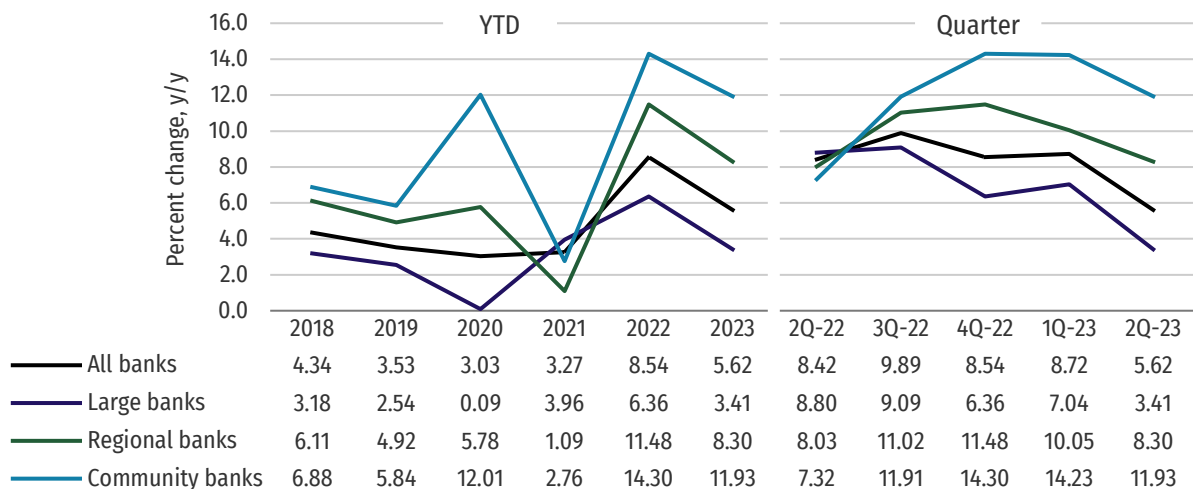


Chart C9. Year-Over-Year Loan Growth, Tenth District Commercial Banks

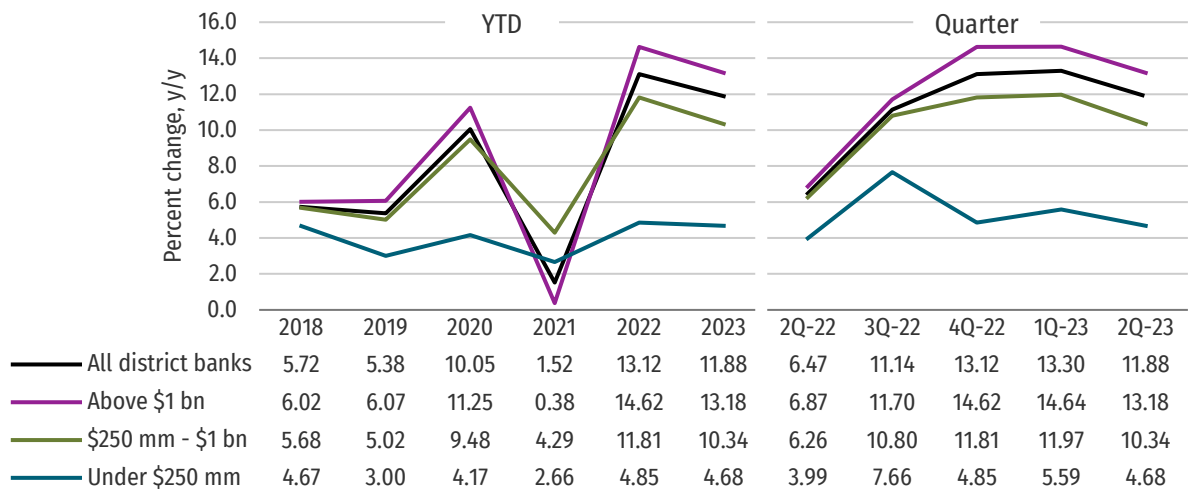


Chart C10. Year-Over-Year Loan Growth by Loan Type, All U.S. Commercial Banks

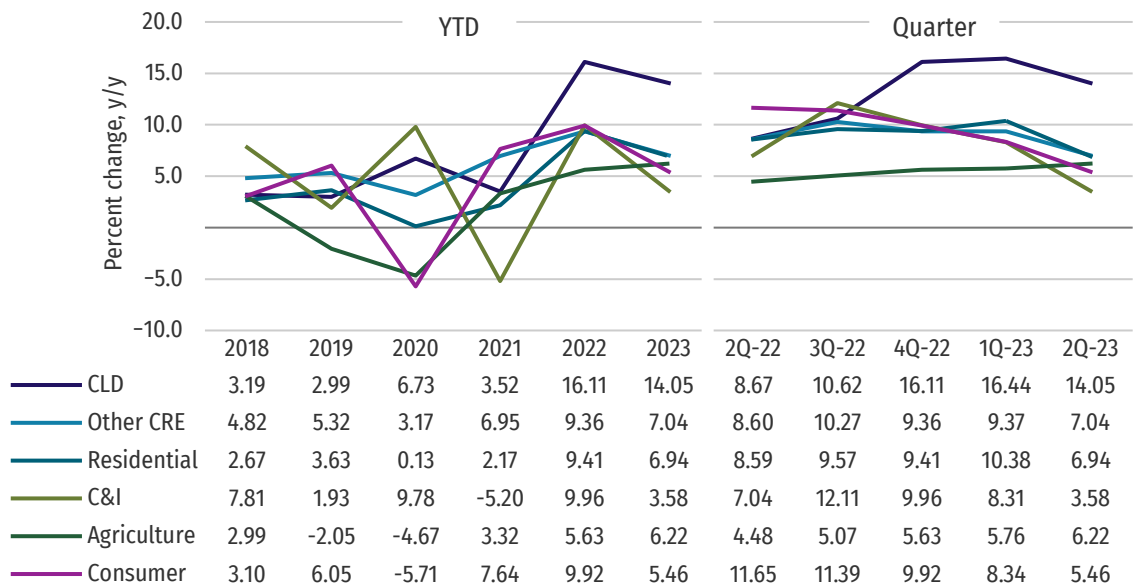


Chart C11. Year-Over-Year Loan Growth by Loan Type, Tenth District Commercial Banks

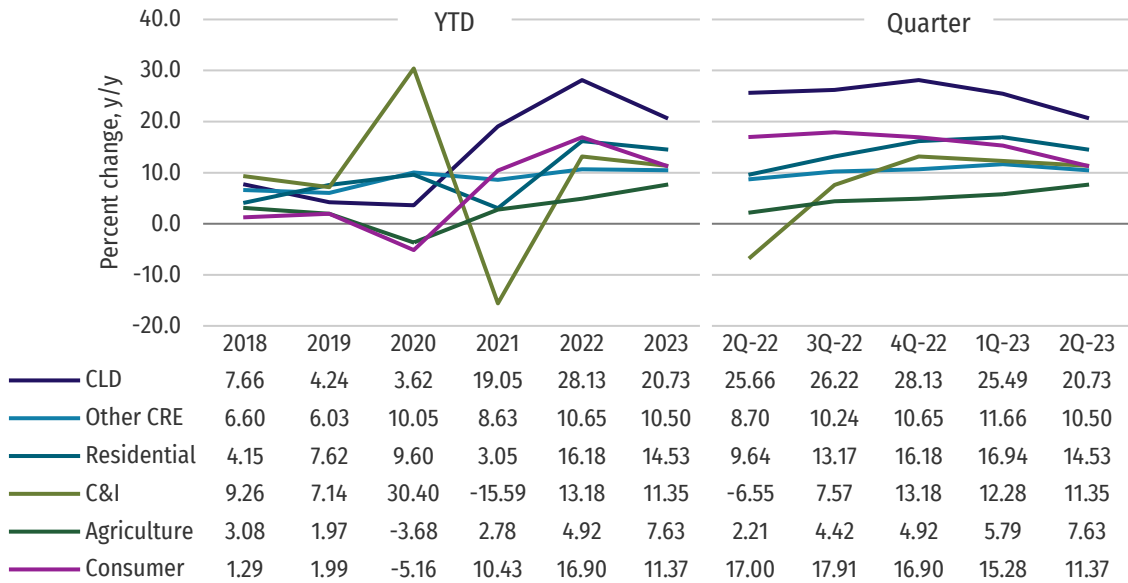


Chart C12. Quarterly Investment Securities Trends

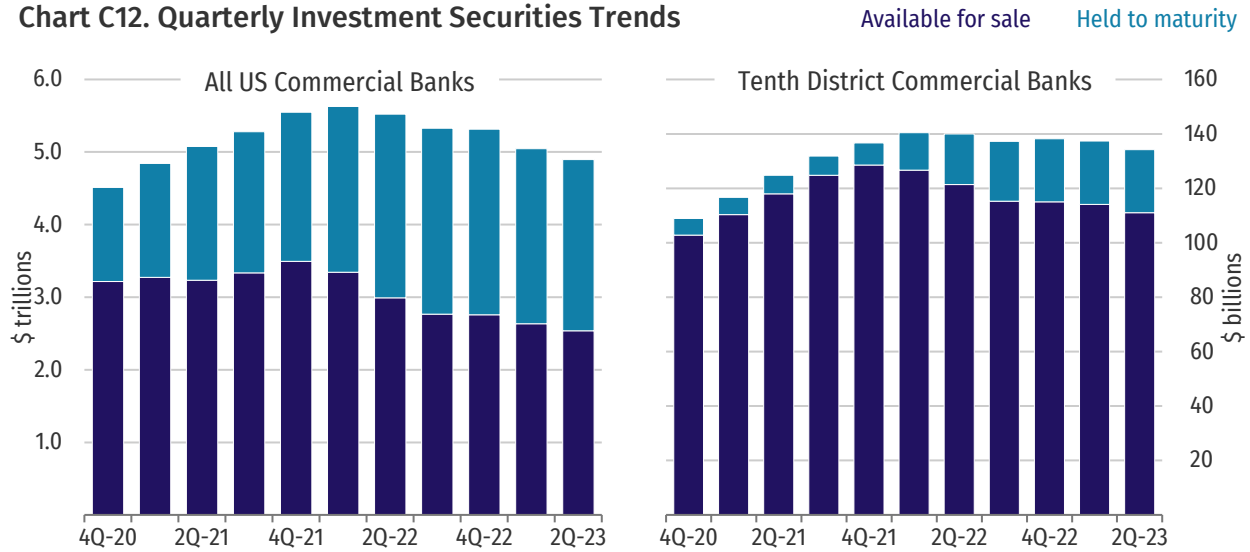


Chart C13. Investment Securities, All U.S. Commercial Banks

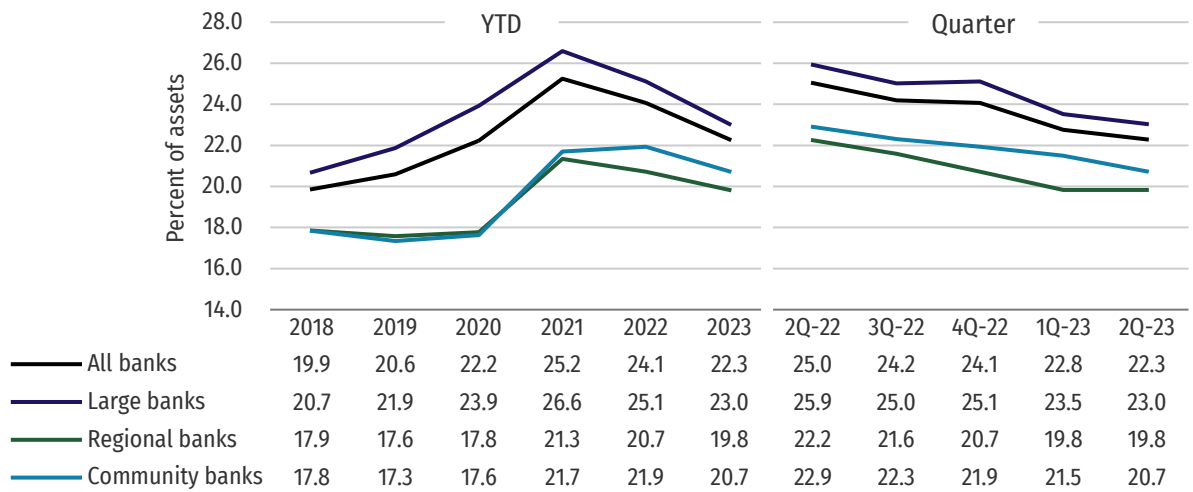


Chart C14. Investment Securities, Tenth District Commercial Banks

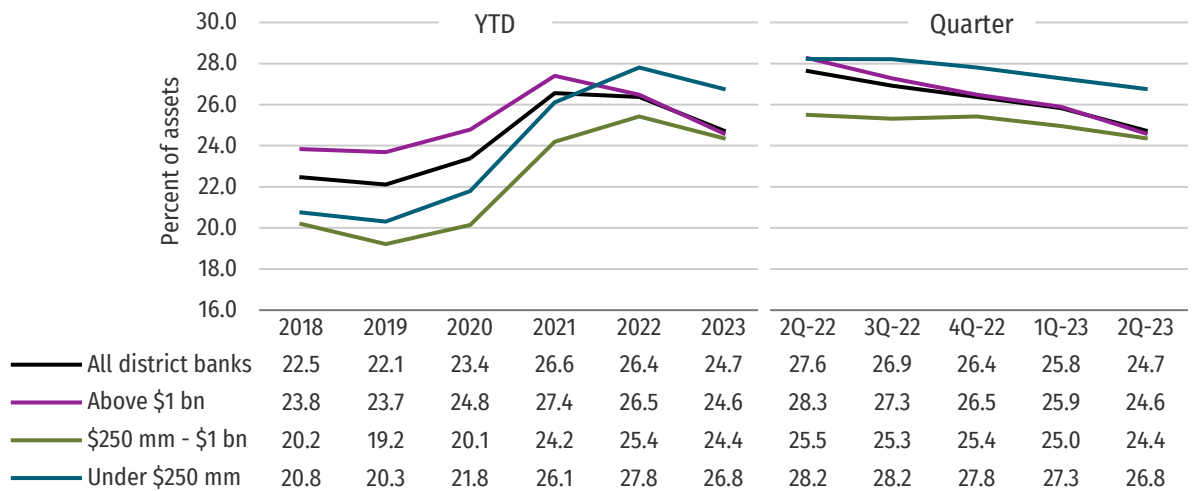


Chart C15. Cash and Reserve Holdings, All U.S. Commercial Banks

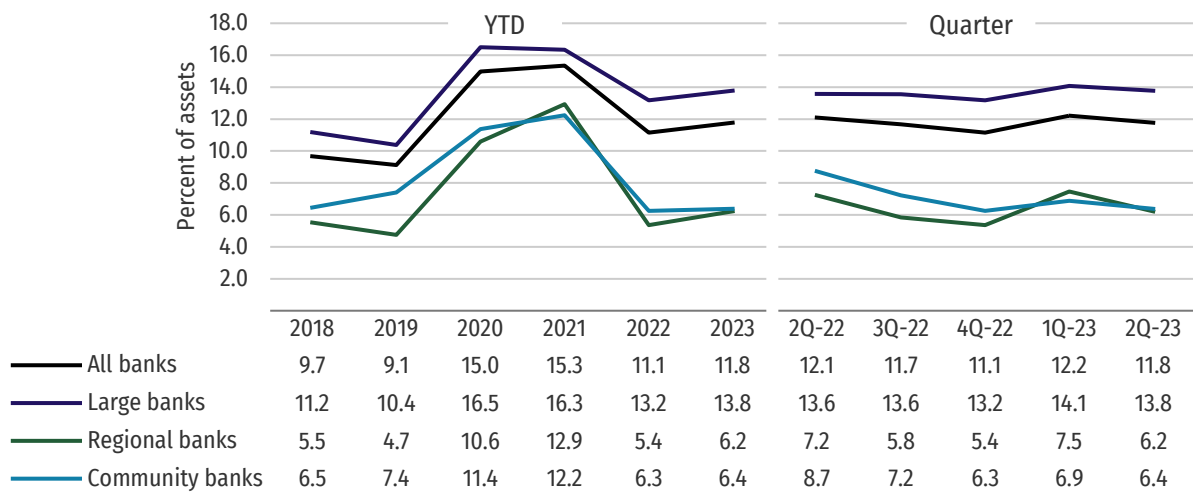
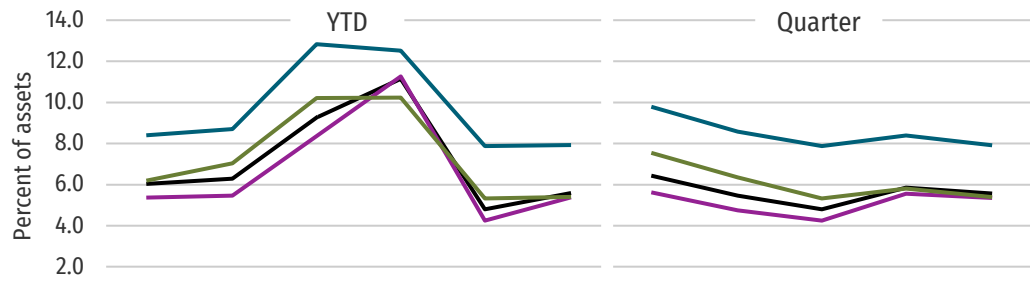


Chart C16. Cash and Reserve Holdings, Tenth District Commercial Banks



	2018	2019	2020	2021	2022	2023	2Q-22	3Q-22	4Q-22	1Q-23	2Q-23
— All district banks	6.0	6.3	9.3	11.1	4.8	5.6	6.4	5.5	4.8	5.8	5.6
— Above \$1 bn	5.4	5.5	8.4	11.3	4.2	5.4	5.6	4.8	4.2	5.6	5.4
— \$250 mm - \$1 bn	6.2	7.0	10.2	10.2	5.3	5.4	7.5	6.4	5.3	5.8	5.4
— Under \$250 mm	8.4	8.7	12.8	12.5	7.9	7.9	9.8	8.6	7.9	8.4	7.9

D. Maturity and Funding

- The use of noncore funding has increased, and deposit composition continues to shift from non-maturity to time deposits.
- The liquid asset ratio has decreased across District banks, impacted by increased pledging of securities to secure contingent funding options.

Chart D1. Loan Portfolio Maturity & Repricing Distribution, All U.S. Commercial Banks

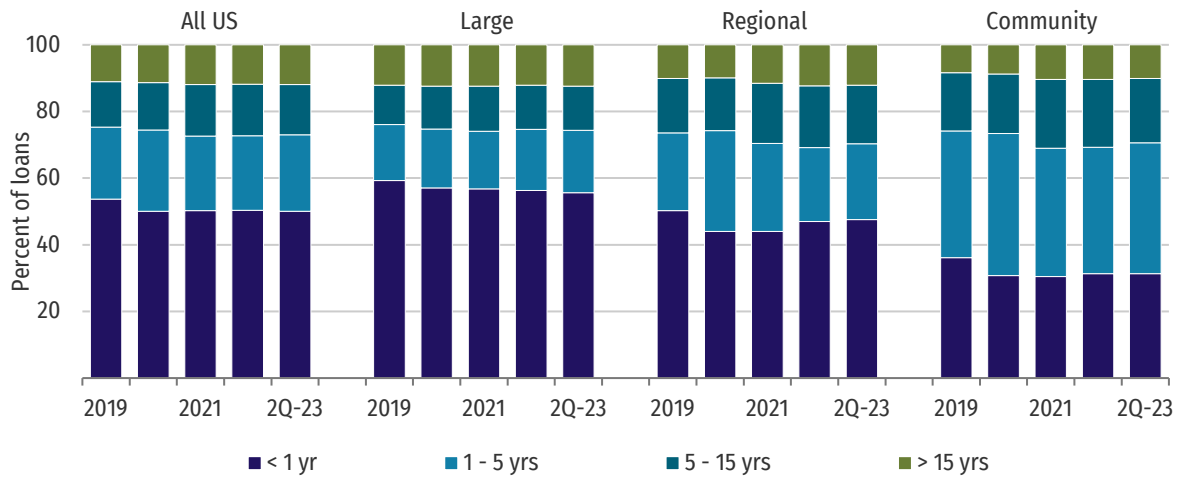


Chart D2. Loan Portfolio Maturity & Repricing Distribution, Tenth District Commercial Banks

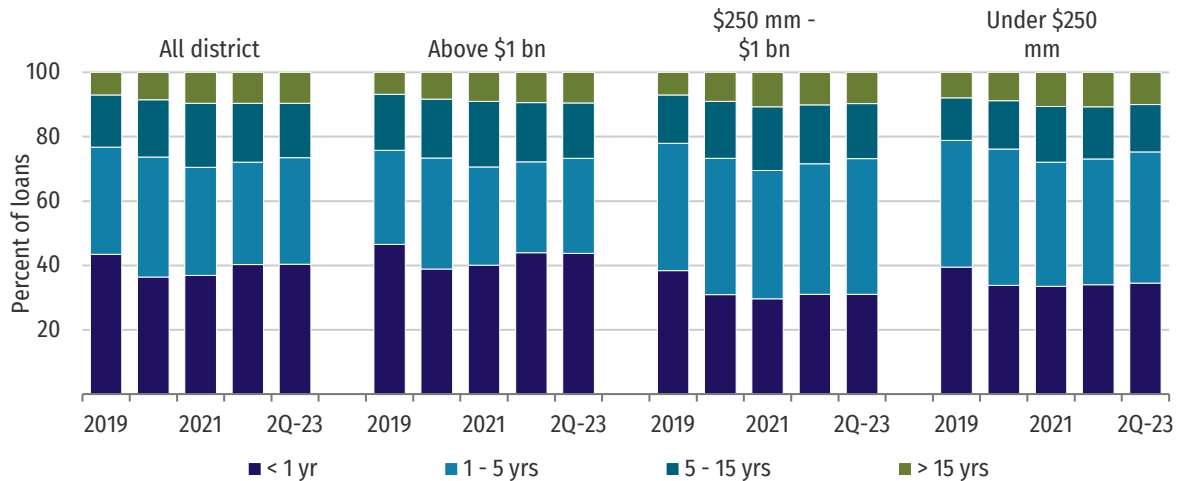


Chart D3. Securities Maturity & Repricing Distribution, All U.S. Commercial Banks

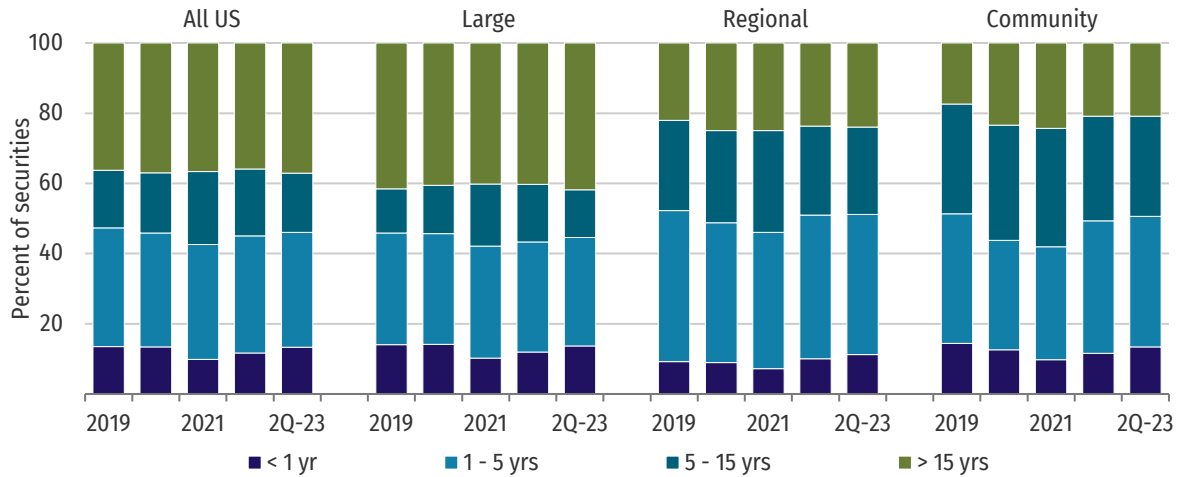


Chart D4. Securities Maturity & Repricing Distribution, Tenth District Commercial Banks

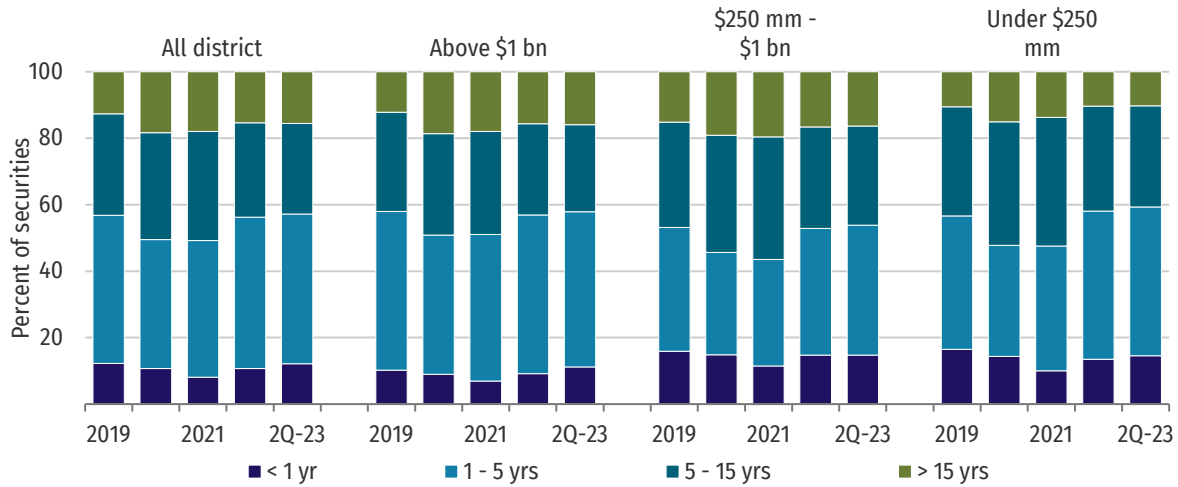


Chart D5. Loan-to-Deposit Ratios, All U.S. Commercial Banks

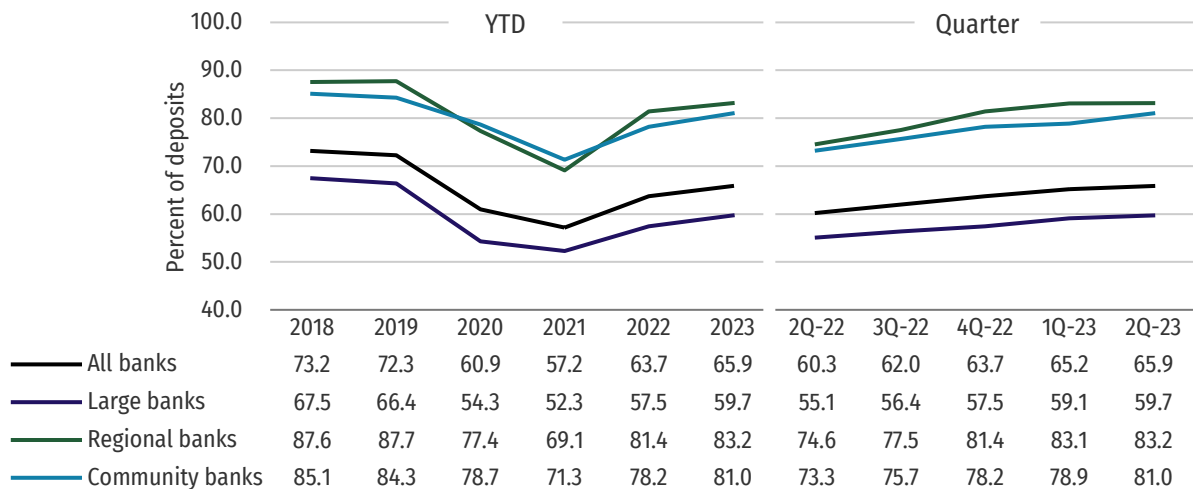


Chart D6. Loan-to-Deposit Ratios, Tenth District Commercial Banks

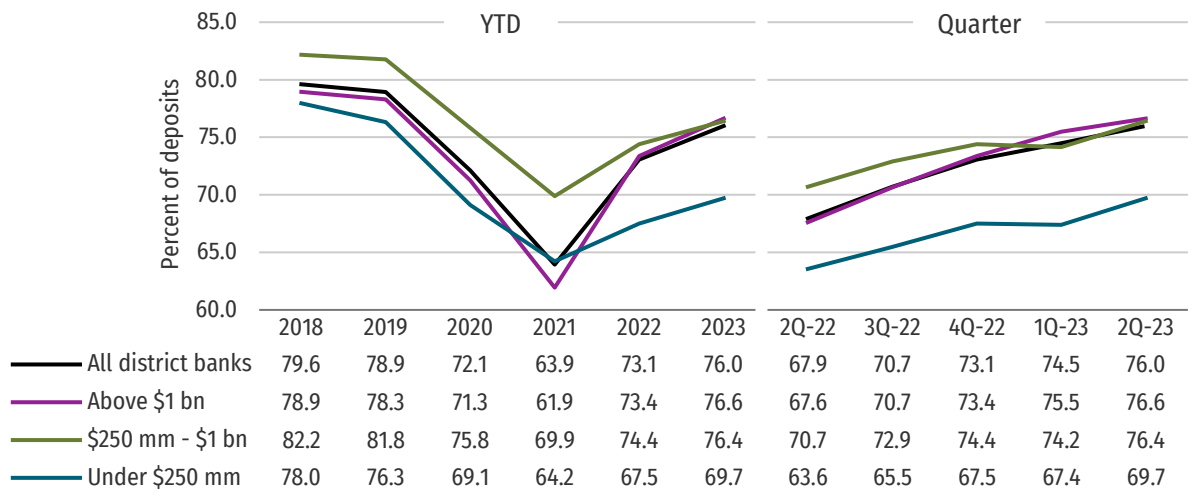


Chart D7. Quarterly Liquid Asset Trends

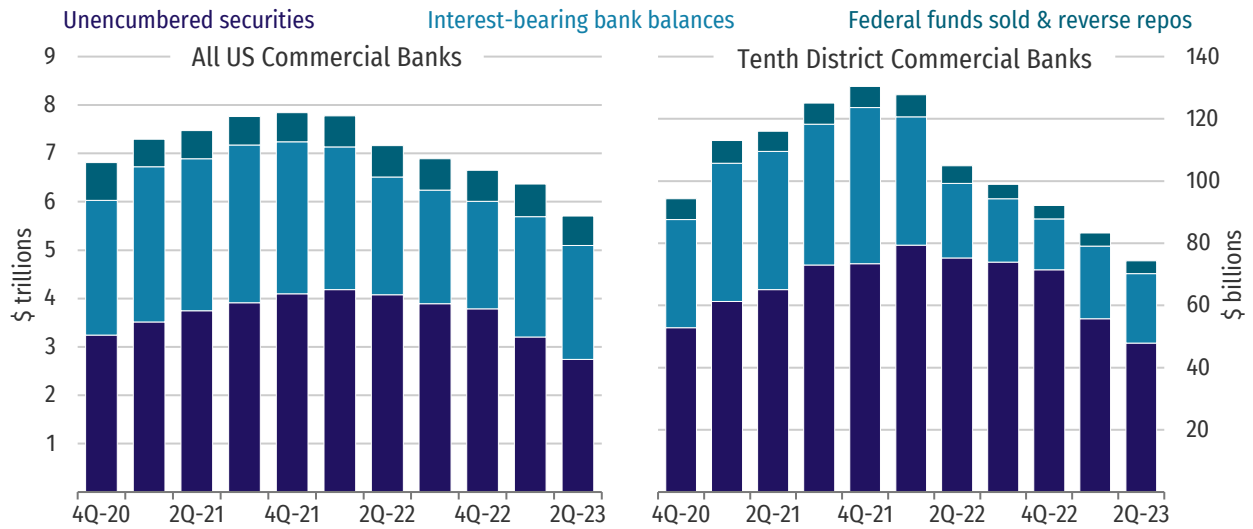


Chart D8. Liquid Asset Ratios, All U.S. Commercial Banks

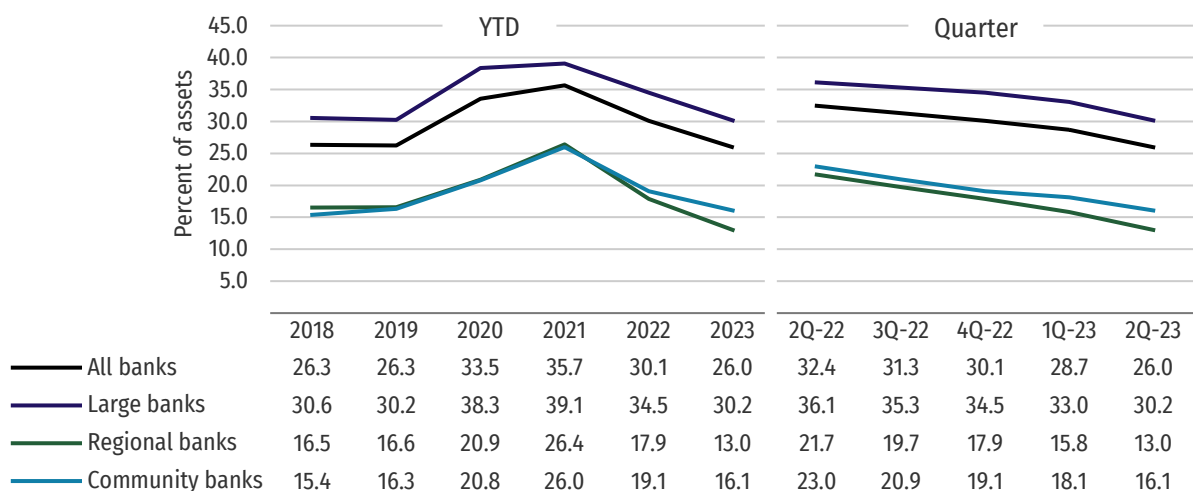


Chart D9. Liquid Asset Ratios, Tenth District Commercial Banks

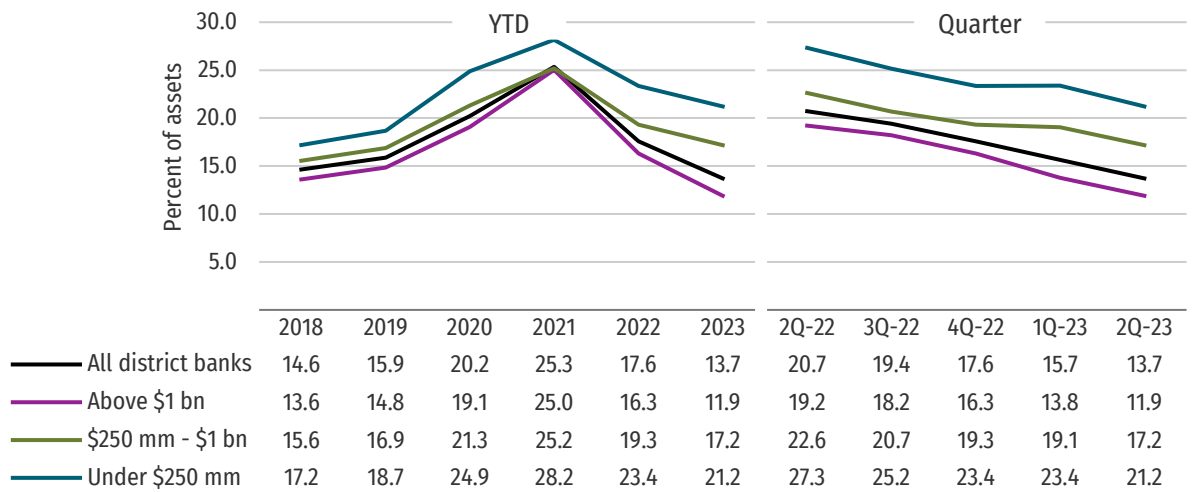


Chart D10. Quarterly Wholesale Funding Trends

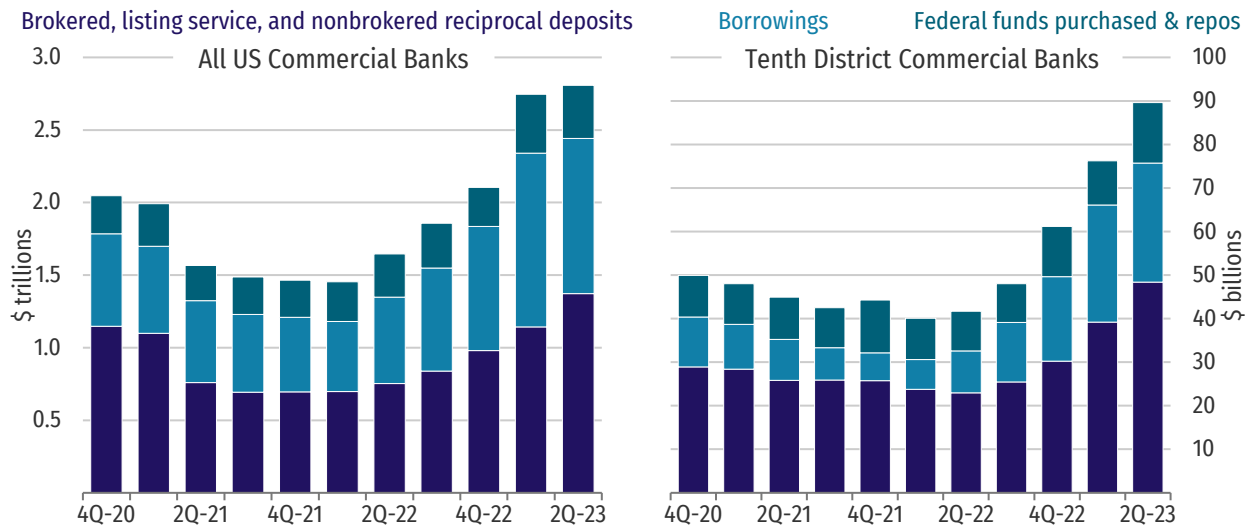


Chart D11. Wholesale Funding Ratios, All U.S. Commercial Banks

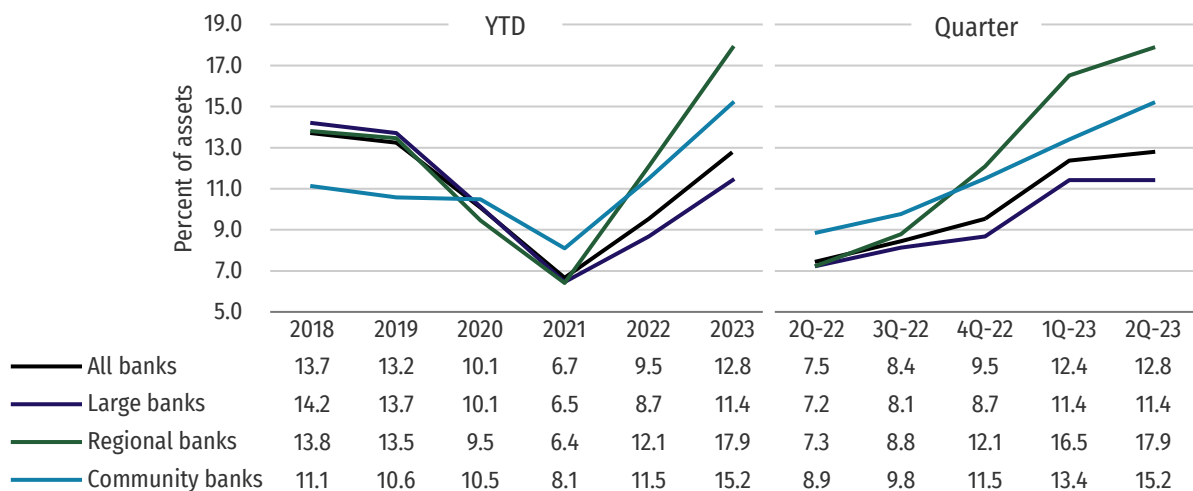
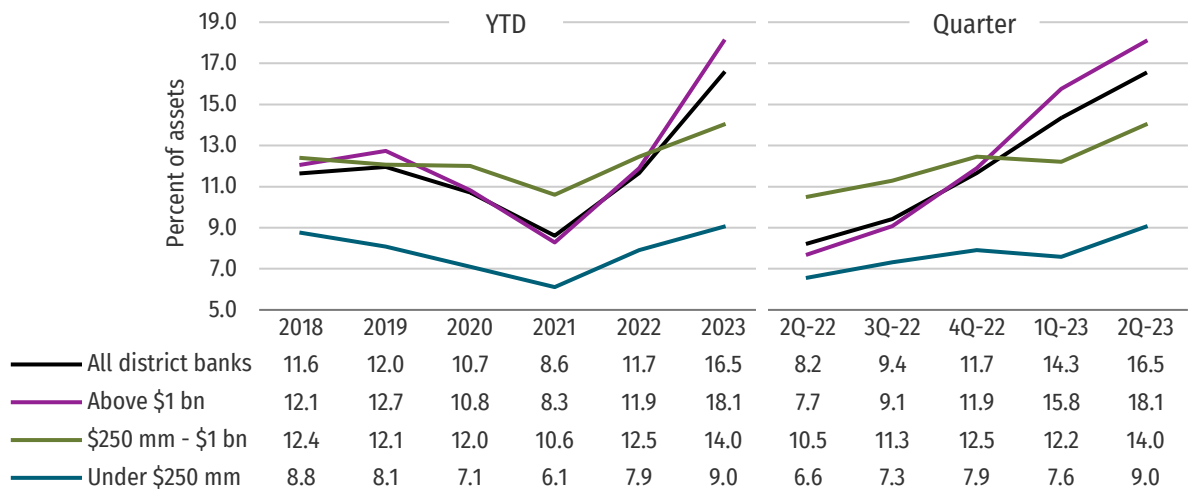


Chart D12. Wholesale Funding Ratios, Tenth District Commercial Banks



Select Ratios by Tenth District State

	Colorado		Kansas		Missouri		Nebraska		New Mexico		Oklahoma		Wyoming	
	2Q-23	2Q-22	2Q-23	2Q-22	2Q-23	2Q-22	2Q-23	2Q-22	2Q-23	2Q-22	2Q-23	2Q-22	2Q-23	2Q-22
Overview¹														
Number of Commercial Banks ²	64	65	198	203	204	211	145	147	29	31	176	178	24	26
Total Assets	\$98,482	\$81,534	\$81,179	\$79,233	\$238,589	\$228,713	\$100,524	\$92,345	\$16,646	\$16,675	\$149,135	\$140,820	\$8,996	\$10,630
Total Loans	\$63,747	\$48,956	\$51,586	\$46,792	\$155,575	\$139,798	\$70,539	\$62,455	\$8,865	\$8,323	\$91,607	\$82,515	\$4,683	\$5,390
Total Deposits	\$83,924	\$73,602	\$68,724	\$68,271	\$201,337	\$198,589	\$82,903	\$78,866	\$14,480	\$15,052	\$119,102	\$121,812	\$7,964	\$9,783
Equity Capital	\$7,864	\$5,881	\$7,025	\$6,924	\$20,056	\$18,788	\$9,007	\$8,763	\$1,204	\$1,186	\$13,776	\$13,017	\$645	\$741
Problem Assets	\$254	\$142	\$236	\$284	\$454	\$492	\$304	\$303	\$59	\$60	\$875	\$999	\$23	\$20
Earnings³														
Banks With Losses	3.13%	6.15%	2.02%	2.46%	1.96%	2.84%	1.38%	3.40%	0.00%	0.00%	4.55%	2.25%	4.17%	7.69%
Return on Average Assets	1.17%	1.12%	1.16%	1.20%	1.37%	1.20%	1.12%	1.27%	1.72%	1.37%	1.34%	1.11%	1.09%	1.11%
Net Interest Income to Average Assets	3.13%	2.88%	3.12%	2.94%	3.20%	2.77%	3.89%	3.50%	3.72%	3.08%	3.29%	2.85%	2.95%	2.74%
Provisions to Average Assets	0.08%	0.06%	0.07%	0.03%	0.10%	0.04%	0.59%	0.27%	0.11%	0.02%	0.10%	0.05%	0.04%	0.03%
Loan Losses to Average Loans	0.04%	0.01%	0.04%	0.06%	0.05%	0.09%	0.63%	0.26%	0.05%	0.02%	0.02%	0.08%	0.11%	0.01%
Asset Quality⁴														
Problem Assets to Total Loans + OREO	0.40%	0.29%	0.46%	0.61%	0.29%	0.35%	0.43%	0.48%	0.66%	0.72%	0.95%	1.21%	0.50%	0.37%
Noncurrent CLD	0.21%	0.10%	0.07%	0.04%	0.24%	0.42%	0.12%	0.11%	0.00%	0.06%	0.27%	0.12%	0.00%	0.08%
Noncurrent Other CRE	0.20%	0.23%	0.23%	0.36%	0.22%	0.26%	0.17%	0.24%	0.41%	0.49%	0.64%	0.69%	0.44%	0.24%
Noncurrent Residential	0.27%	0.17%	0.39%	0.51%	0.23%	0.25%	0.30%	0.33%	0.32%	1.02%	1.97%	3.25%	0.42%	0.15%
Noncurrent C&I	0.75%	0.44%	0.71%	0.89%	0.24%	0.32%	0.53%	0.63%	1.37%	0.76%	0.78%	0.58%	1.31%	0.98%
Noncurrent Farm	2.16%	0.33%	0.44%	0.54%	0.10%	0.27%	0.32%	0.48%	0.00%	0.00%	0.67%	1.15%	0.62%	0.69%
Noncurrent RE Farm	0.45%	0.61%	0.67%	0.94%	0.31%	0.41%	0.54%	0.87%	1.46%	0.43%	1.24%	1.58%	0.11%	0.51%
Other Financial Ratios														
Coverage Ratio	307.55%	455.69%	337.15%	274.89%	450.73%	387.89%	533.02%	332.33%	248.34%	252.92%	140.45%	114.77%	297.92%	423.75%
Leverage Ratio	9.09%	8.49%	10.60%	10.40%	9.36%	8.89%	10.09%	10.21%	9.65%	9.04%	9.82%	9.31%	10.36%	9.50%
Tangible Equity Capital to Total Assets	6.25%	6.07%	7.58%	7.71%	7.36%	7.26%	8.00%	8.71%	6.63%	6.53%	8.01%	8.03%	6.76%	6.61%
Noncore Funding to Total Assets	15.24%	4.18%	16.53%	9.86%	13.11%	6.97%	17.03%	8.58%	10.14%	5.68%	16.94%	7.75%	13.11%	8.19%

¹ Balance sheet items shown in millions.

² Includes all commercial banks located within each state.

³ Income statement items shown as year-to-date. Average assets are calculated by using the average of YTD average assets.

⁴ Problem assets consist of loans 90+ days past due, in nonaccrual status, and other real estate owned (OREO). Noncurrent loans consist of loans 90+ days past due or in nonaccrual status.

Appendix

- The appendix provides technical notes and definitions of the financial ratios presented in this report. Questions or comments relating to this report may be directed to KC.SRM.SRA.DistrictBankingConditions@kc.frb.org.

Technical Notes:

The population of banks included in this report is limited to commercially chartered state member, nonmember, and national banks. The Tenth District encompasses organizations headquartered in western Missouri, Kansas, Nebraska, Oklahoma, Colorado, Wyoming, and northern New Mexico.

All financial metrics presented in this report are weighted averages. Banks are grouped into asset categories based on total assets reported as of each financial date. For purposes of this report, large banks include banks with total assets greater than \$100 billion, regional banks include banks with assets between \$10 billion and \$100 billion, and community banks include banks with assets of less than \$10 billion. Assets are measured as of each financial date. Charts that present growth rates and changes in balance sheet levels are merger-adjusted consistent with the process that FDIC analysts use to account for mergers.¹

Items from the Reports of Income are reported on a calendar year-to-date (YTD) basis by financial institutions. Ratios utilizing these items are calculated differently when presented as YTD versus quarterly. For YTD calculations, items are annualized based on values reported calendar YTD and divided by an average of the balance sheet item(s) reported for each quarter YTD. For quarterly calculations, items are annualized based on values reported for the quarter and divided by the balance sheet item(s) for that quarter.

¹ Merger-adjusted calculations add the assets and liabilities of acquired institutions to the acquiring institutions in previous periods. The analysis treats acquired and acquiring institutions as if the merger had already occurred by the beginning of the period being analyzed (Breitenstein and Thieme 2019).

References

Breitenstein, Eric C., and Derek K. Thieme. 2019. "Merger-Adjusting Bank Data: A Primer." *FDIC Quarterly*, vol. 13, no. 1, pp. 31–49.

Glossary of Terms:

Agriculture Loans

The sum of loans secured by farmland (including farm residential and other improvements) and loans to finance agricultural production and other loans to farmers.

Allowance for Loan & Lease Losses (ALLL)

The purpose of the ALLL is to reflect estimated credit losses within a bank's portfolio of loans and leases. Estimated credit losses are estimates of the current amount of loans that are probable that the bank will be unable to collect given the facts and circumstances since the evaluation date (generally the balance sheet date).

Assets

The sum of cash and balances due from depository institutions, securities, federal funds sold and securities purchased under agreements to resell, loans and leases (net of unearned income and the

allowance for loan and lease losses), trading assets, premises and fixed assets (including capitalized leases), other real estate owned, investments in unconsolidated subsidiaries and associated companies, direct and indirect investments in real estate ventures, intangible assets, and other assets.

Cash and Reserve Holdings

The sum of interest-bearing balances (including time certificates of deposit not held for trading) and noninterest-bearing balances, currency and coin (includes cash items in process of collection and unposted debits).

Commercial and Industrial (C&I) Loans

Loans for commercial and industrial purposes to sole proprietorships, partnerships, corporations, and other business enterprises, which are secured (other than by real estate) or unsecured, single-payment or installment.

Commercial Real Estate (CRE)

The sum of CLD and other CRE.²

Construction and Land Development Loans (CLD)

Construction, land development, and other land loans. Includes 1–4 family residential construction loans and other construction loans and all land development and other land loans.

Consumer Loans

Loans to individuals for household, family, and other personal expenditures. Includes credit cards, other revolving credit plans, automobile loans, and other consumer loans (includes single payment and installment loans other than automobile loans, and all student loans).

Coverage Ratio

The ALLL divided by noncurrent loans.

Earning Assets

The sum of interest-bearing balances due from depository institutions, investment securities, federal funds sold and securities purchased under agreements to resell, loans and leases (net of unearned income and the allowance for loan and lease losses), and trading assets.

Equity Capital

The sum of perpetual preferred stock (including surplus), common stock and surplus, retained earnings, accumulated other comprehensive income, and other equity capital components, less treasury stock.

Interest Income

The sum of interest and fee income on loans, income from lease financing receivables, interest income on balances due from depository institutions (including interest income on time certificates of deposit not held for trading), interest and dividend income on securities, interest income from trading assets, federal funds sold and securities purchased under agreements to resell, and other interest income.

Investment Securities

The sum of the amortized cost of held-to-maturity securities and fair value of available-for-sale debt securities.

Leverage Ratio

Tier 1 capital divided by total assets for the leverage ratio. Total assets for the leverage ratio include quarterly average assets less deductions from common equity tier 1 capital and other deductions to total assets for leverage capital purposes.

Liquid Asset Ratio

The sum of interest-bearing balances, federal funds sold, securities purchased under agreements to resell, and unencumbered securities divided by total assets. Unencumbered securities include total securities net of pledged securities.

Loan Loss Provisions

Adjustments (charges or credits) to the ALLL level to reflect management's current estimate of expected credit losses.

Loans to Assets

Total loans and leases held for investment and held for sale (less unearned income) divided by total assets.

Loan-to-Deposit Ratio

Total loans and leases held for investment and held for sale (less unearned income) divided by total interest-bearing and noninterest-bearing deposits.

Net Interest Margin (NIM)

Interest income net of interest expense divided by average earning assets.

Nonaccrual Loans

Loans and lease financing receivables that are required to be reported on a nonaccrual basis because (a) they are maintained on a cash basis due to a deterioration in the financial position of the borrower, (b) payment in full of interest or principal is not expected, or (c) principal or interest has been in default for 90 days or longer, unless the obligation is both well secured and in the process of collection.

Noncurrent Loans

Loans past due 90 days or more and still accruing and nonaccrual loans.

Noninterest Expense

Salaries and employee benefits, expenses of premises and fixed assets (net of rental income), goodwill impairment losses, amortization expense and impairment losses for other intangible assets, and other noninterest expense.

Noninterest Income

The sum of income from fiduciary activities, service charges on deposit accounts, trading revenue, income from securities-related and insurance activities, venture capital revenue, net servicing fees, net securitization income, net gains (losses) on sales of loans and leases, other real estate owned, and sales of other assets, and other noninterest income.

Other Commercial Real Estate (CRE)

Loans secured by multifamily (5 or more) residential properties, owner-occupied nonfarm nonresidential properties, and other nonfarm nonresidential properties, and loans to finance commercial real estate, construction, and land development activities (not secured by real estate).

Other Loans

The sum of loans to foreign governments and official institutions (including foreign central banks), obligations (other than securities and leases) of states and political subdivisions in the U.S., loans to nondepository financial institutions, loans for purchasing or carrying securities (secured and unsecured), all other loans and lease financing receivables.

Other Real Estate Owned (OREO)

Other real estate owned.

Problem Assets

Loans past due 90 days or more and still accruing, nonaccrual loans, and OREO divided by total loans plus OREO.

Residential Loans

Loans secured by 1–4 family residential properties. Includes revolving, open-end loans secured by 1–4 family residential properties and extended under

lines of credit, closed-end loans secured by 1–4 family residential properties secured by first or second liens.

Restructured Loans

Loans and lease financing receivables that have been restructured or renegotiated because of a deterioration in the financial position of the obligor but remain in compliance with the modified terms of the restructuring.

Return on Average Assets (ROAA)

Net income (loss) attributable to bank divided by average assets. See technical notes for year-to-date and quarter calculations.

Revenue

Net interest income and noninterest income.

Texas Ratio

Restructured loans, nonaccrual loans, and OREO divided by equity capital plus the ALLL.

Wholesale Funding Ratio

Federal funds purchased and securities sold under agreements to repurchase, brokered deposits, deposits obtained using deposit listing services that are not brokered deposits, nonbrokered reciprocal deposits, Federal Home Loan Bank advances, and other borrowings divided by total assets.

² Loans to finance commercial real estate, construction, and land development activities (not secured by real estate) is a memorandum item on the call report and are reported C&I or other loans of Schedule RC-C, Part I. This item is excluded as part of Other CRE when presented on charts with the C&I or other loan categories to avoid double counting of this item in the loan type groupings.