

Organization



Chart

Federal Reserve Bank of Kansas City

Denver • Oklahoma City • Omaha

Directors

HEAD OFFICE BOARD

Lu Cordova
Chair and Federal Reserve Agent
CEO
Corlund Industries, LLC;
President and General Manager
Almacen Storage Group
Boulder, Colorado

DENVER BOARD

Barbara Mowry
Chair of Branch Board
President and CEO
Silver Creek Systems
Westminster, Colorado

OKLAHOMA CITY BOARD

Steven C. Agee
Chair of Branch Board
President
Agee Energy, LLC.
Oklahoma City, Oklahoma

OMAHA BOARD

Lyn Wallin Ziegenbein
Chair of Branch Board
Executive Director
Peter Kiewit Foundation
Omaha, Nebraska

Paul DeBruce
Deputy Chairman
CEO and Chairman/
Founder
DeBruce Grain, Inc.
Kansas City, Missouri

David Brownback
President and CEO
Citizens State Bank and
Trust Co.
Ellsworth, Kansas

Robert C. Fricke
President and CEO
Farmers & Merchants
Bank of Ashland
Ashland, Nebraska

Mark Gordon
Owner
Merlin Ranch
Buffalo, Wyoming

John A. Ikard
President and CEO
FirstBank Holding
Company
Lakewood, Colorado

Terry L. Moore
President
Omaha Federation of
Labor, AFL-CIO
Omaha, Nebraska

Richard K. Ratcliffe
Chairman
Ratcliffe's Inc.
Weatherford, Oklahoma

John T. Stout, Jr.
CEO
Plaza Belmont
Management Group, LLC
Shawnee Mission, Kansas

Bruce K. Alexander
President and CEO
Vectra Bank Colorado
Denver, Colorado

Charles H. Brown III
President
C.H. Brown Company
Wheatland, Wyoming

Anne Haines Yatskowitz
President and CEO
ACCION New Mexico-
Arizona-Colorado
Albuquerque, New Mexico

Larissa L. Herda
Chair, CEO and
President
tw telecom, inc.
Littleton, Colorado

Margaret Kelly
CEO
RE/MAX International, Inc.
Denver, Colorado

Mark A. Zaback
President, CEO and
Board Member
Jonah Bank of Wyoming
Casper, Wyoming

Bill Anoatubby
Governor
Chickasaw Nation
Ada, Oklahoma

James D. Dunn
Chairman
Mill Creek Lumber &
Supply Company
Tulsa, Oklahoma

Jacqueline R. Fiegel
Senior Executive
Vice President and COO
Coppermark Bank
Oklahoma City, Oklahoma

Rose Washington Rentie
Executive Director
TEDC CreativeCapital
Tulsa, Oklahoma

Douglas E. Tippens
President and CEO
Bank of Commerce
Yukon, Oklahoma

K. Vasudevan
Chairman and Founder
Service and Technology
Corporation
Bartlesville, Oklahoma

Todd S. Adams
CEO
Adams Bank and Trust
Ogallala, Nebraska

James C. Farrell
President and CEO
Farmers National
Company
Omaha, Nebraska

G. Richard Russell
President and CEO
Millard Lumber, Inc.
Omaha, Nebraska

JoAnn M. Martin
Chair, President and CEO
Ameritas Life Insurance
Corp.;
President and CEO
UNIFI Companies
Lincoln, Nebraska

Mark A. Sutko
President and CEO
Platte Valley State Bank
Kearney, Nebraska

James Thom
Vice President
T-L Irrigation Company
Hastings, Nebraska

COMMITTEE ROSTER FOR 2010

AUDIT COMMITTEE

Richard K. Ratcliffe, *Chair*
Paul DeBruce
John Ikard

BUILDINGS COMMITTEE

Terry Moore, *Chair*
David W. Brownback
Robert C. Fricke
Thomas M. Hoenig, *ex officio*

COMPENSATION COMMITTEE

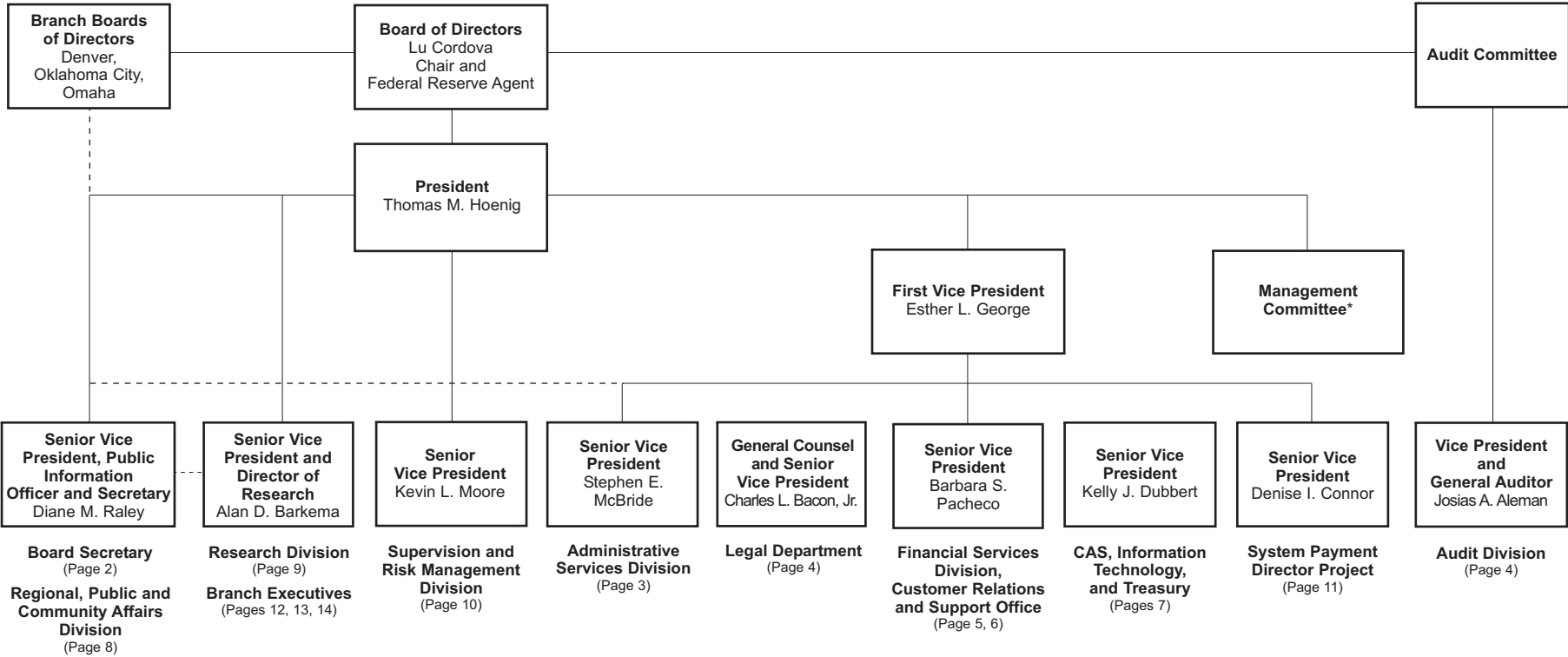
Lu Cordova, *Chair*
Mark Gordon
John Stout

Note: Chair Cordova is an *ex officio* member of each standing committee.

FEDERAL ADVISORY COUNCIL MEMBER

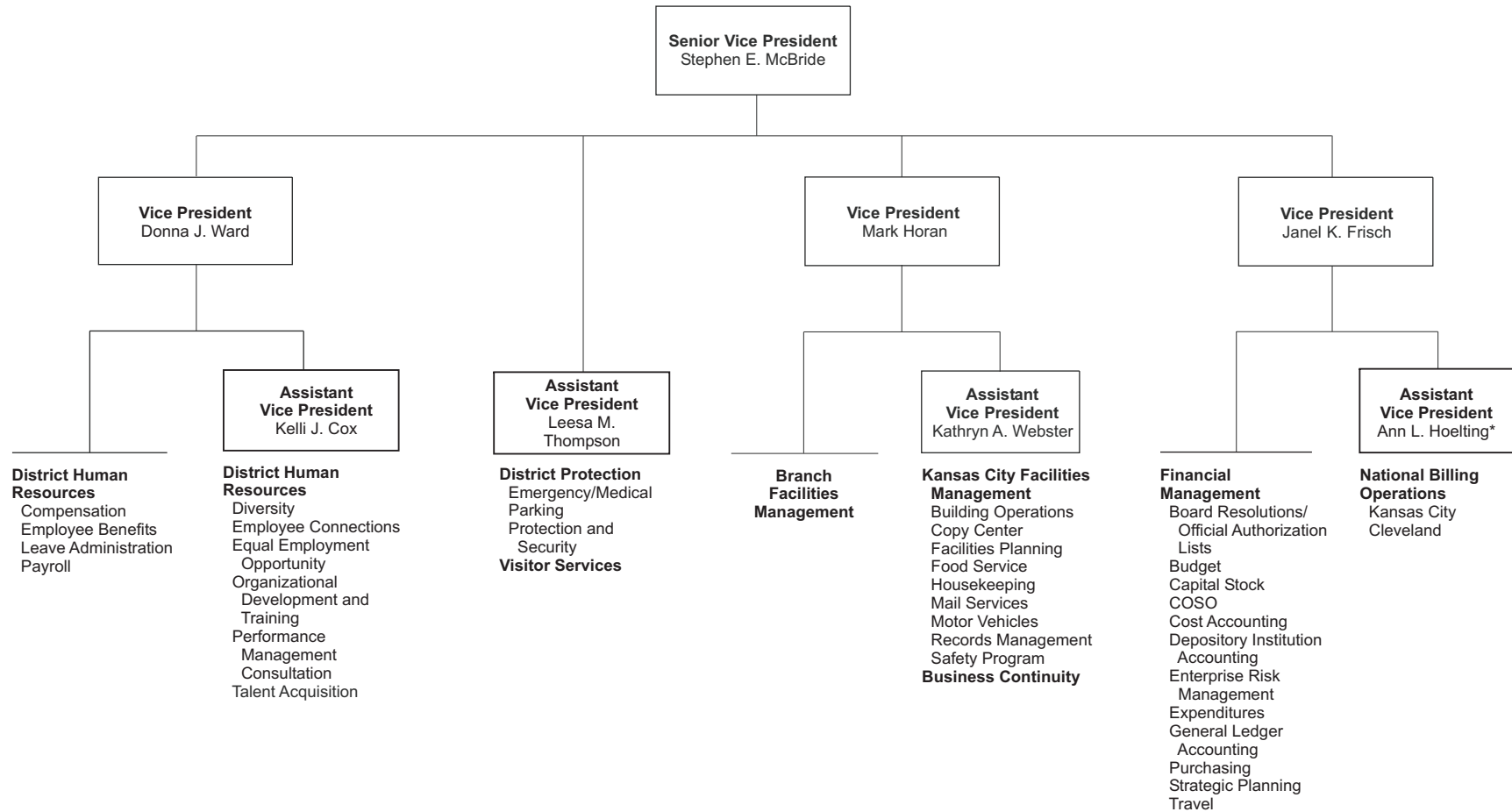
Bruce Lauritzen
Chairman
First National Bank
Omaha, Nebraska

Organization



* Management Committee members include: Thomas M. Hoenig, Esther L. George, Alan D. Barkema, Denise I. Connor, Kelly J. Dubbert, Stephen E. McBride, Kevin L. Moore, Barbara S. Pacheco, Diane M. Raley and Charles L. Bacon, Jr. (Advisor).

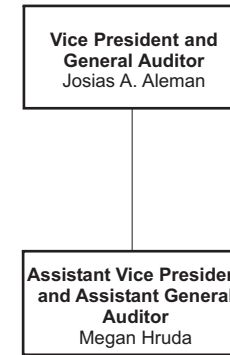
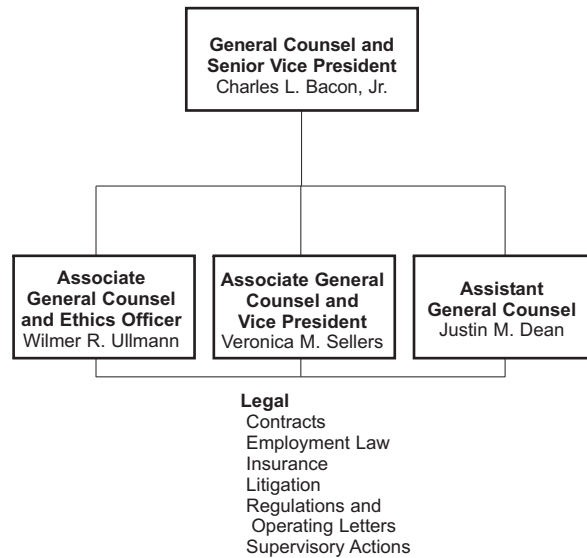
Administrative Services Division



* Also reports to Alan Bloom, Federal Reserve Bank of Boston

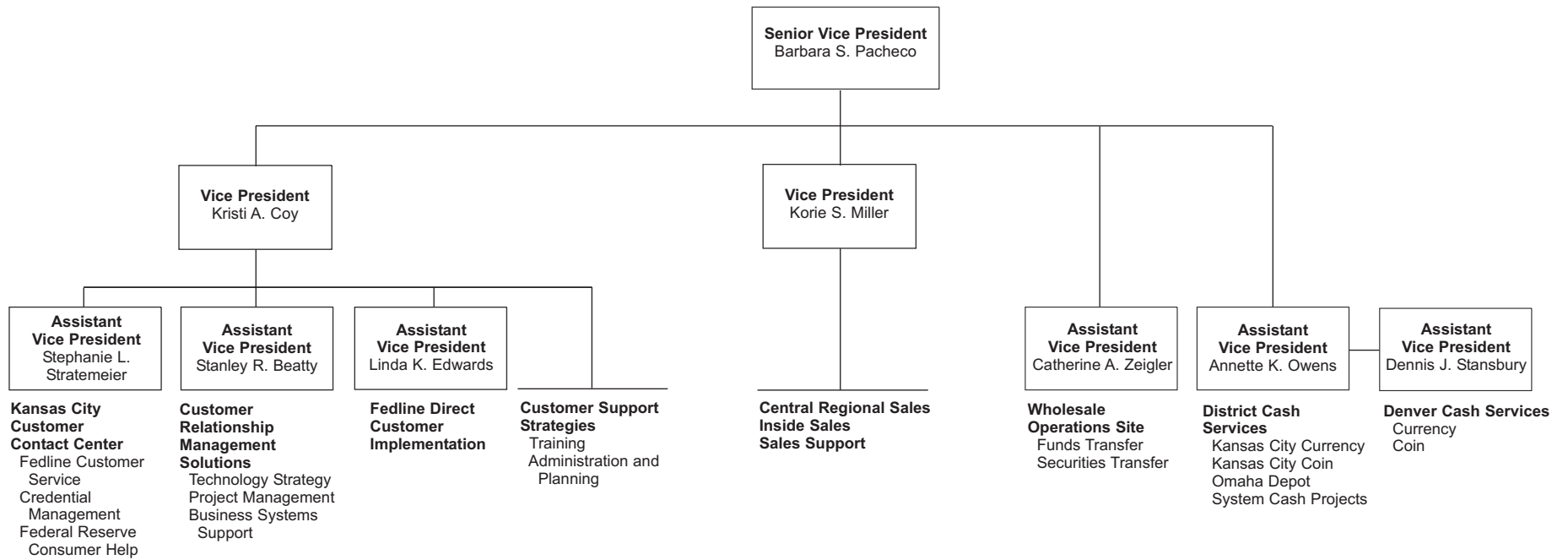
Legal Department

Audit

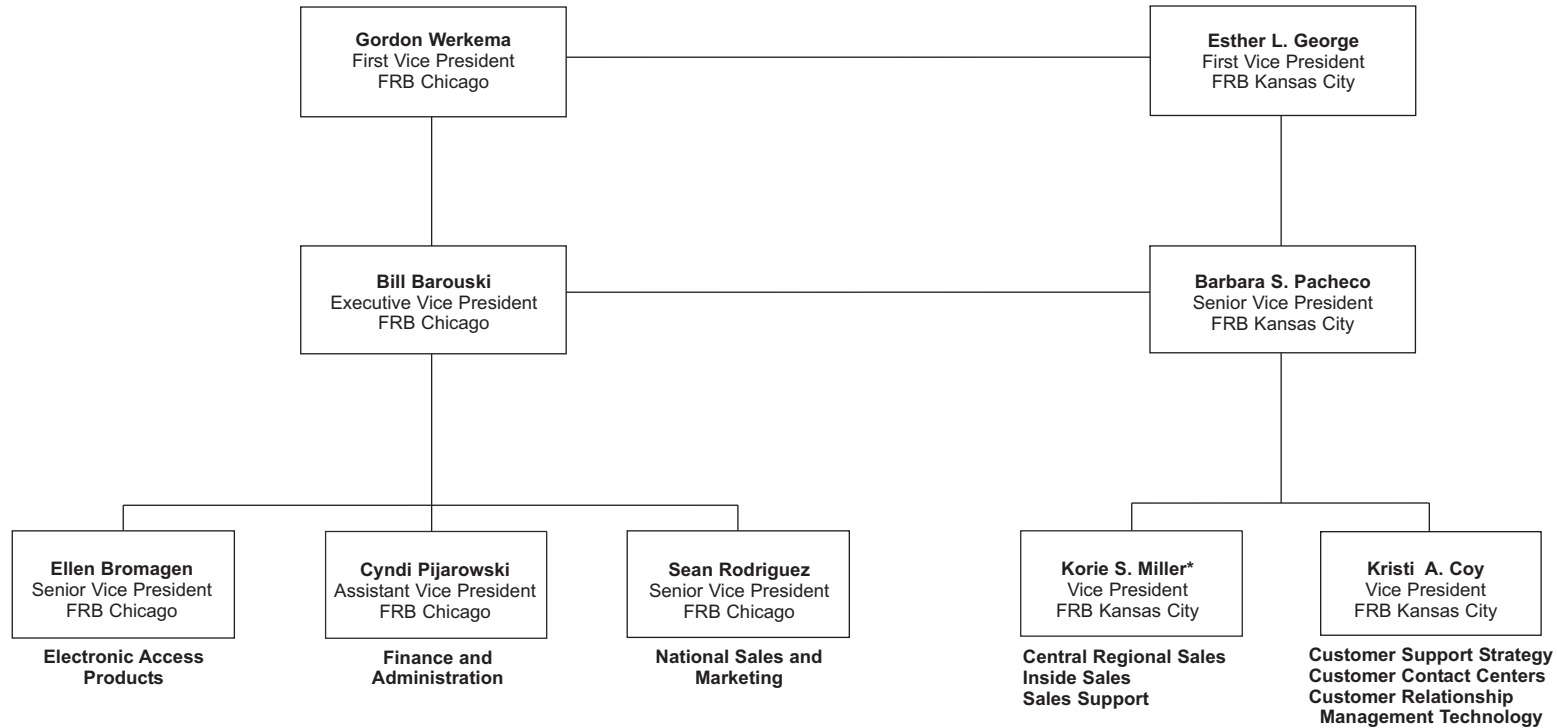


Audit
Operational and IT Audits

Financial Services Division

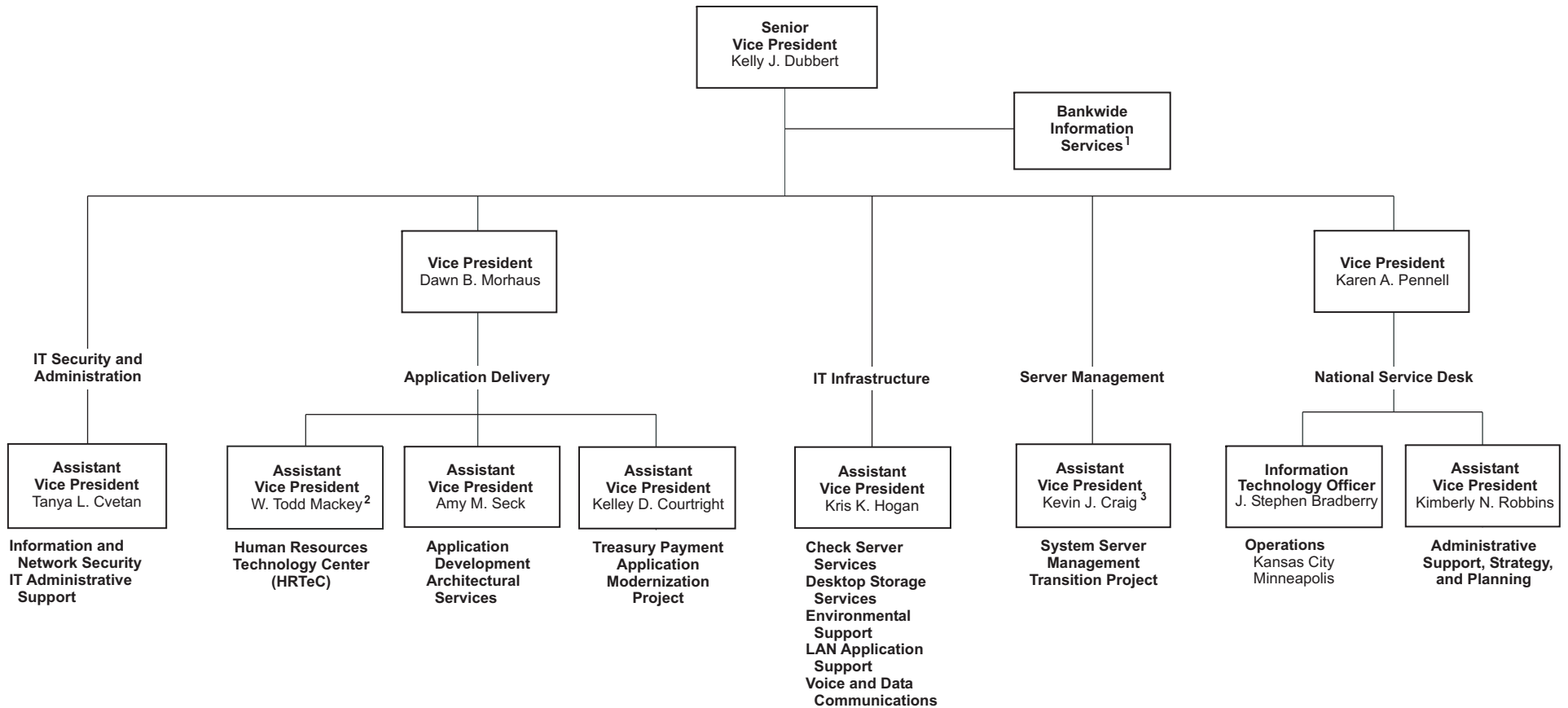


Customer Relations and Support Office (CRSO)



* Also reports to Shonda Clay, Vice President-Regional Sales, Federal Reserve Bank of Chicago.

Information Technology Division

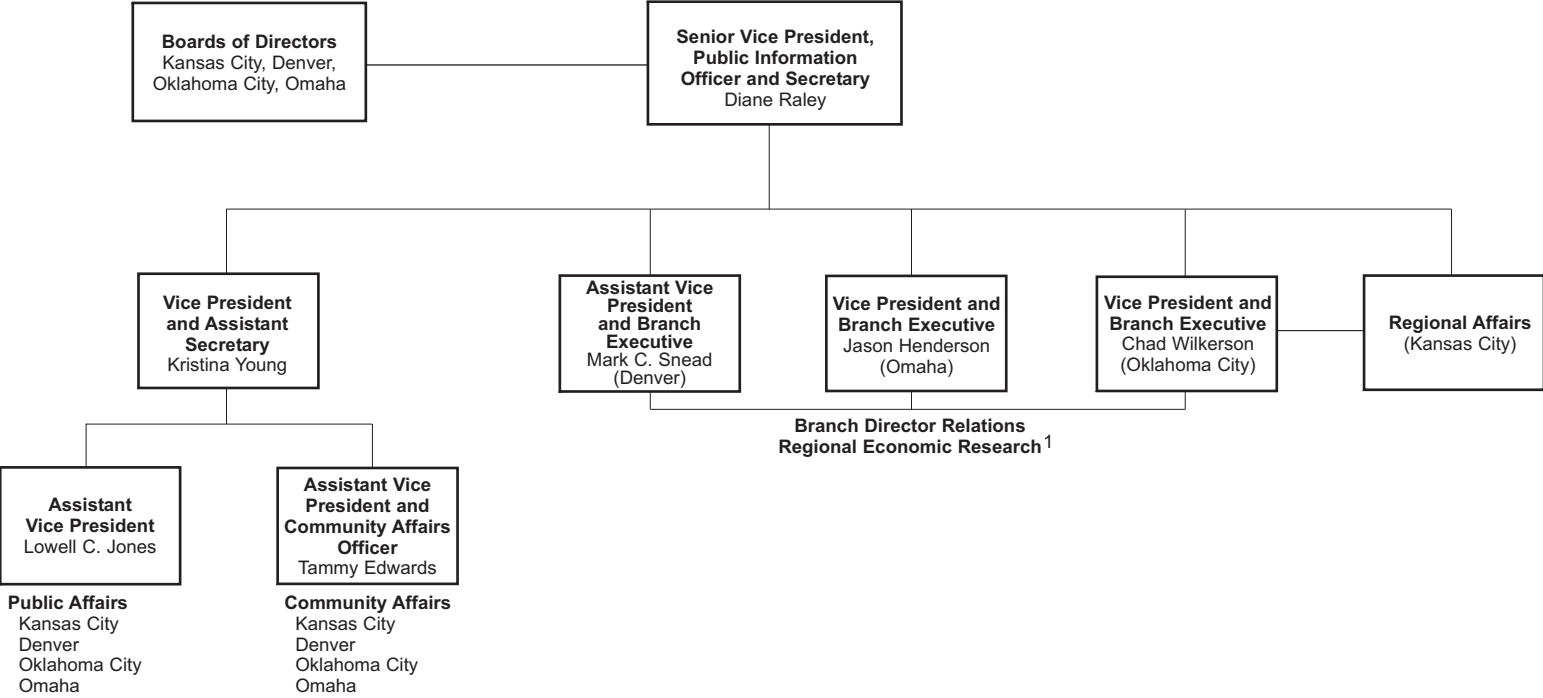


1 CIO Coordination of Technology needs.

2 Also serves as Assistant Secretary to the Conference of First Vice Presidents.

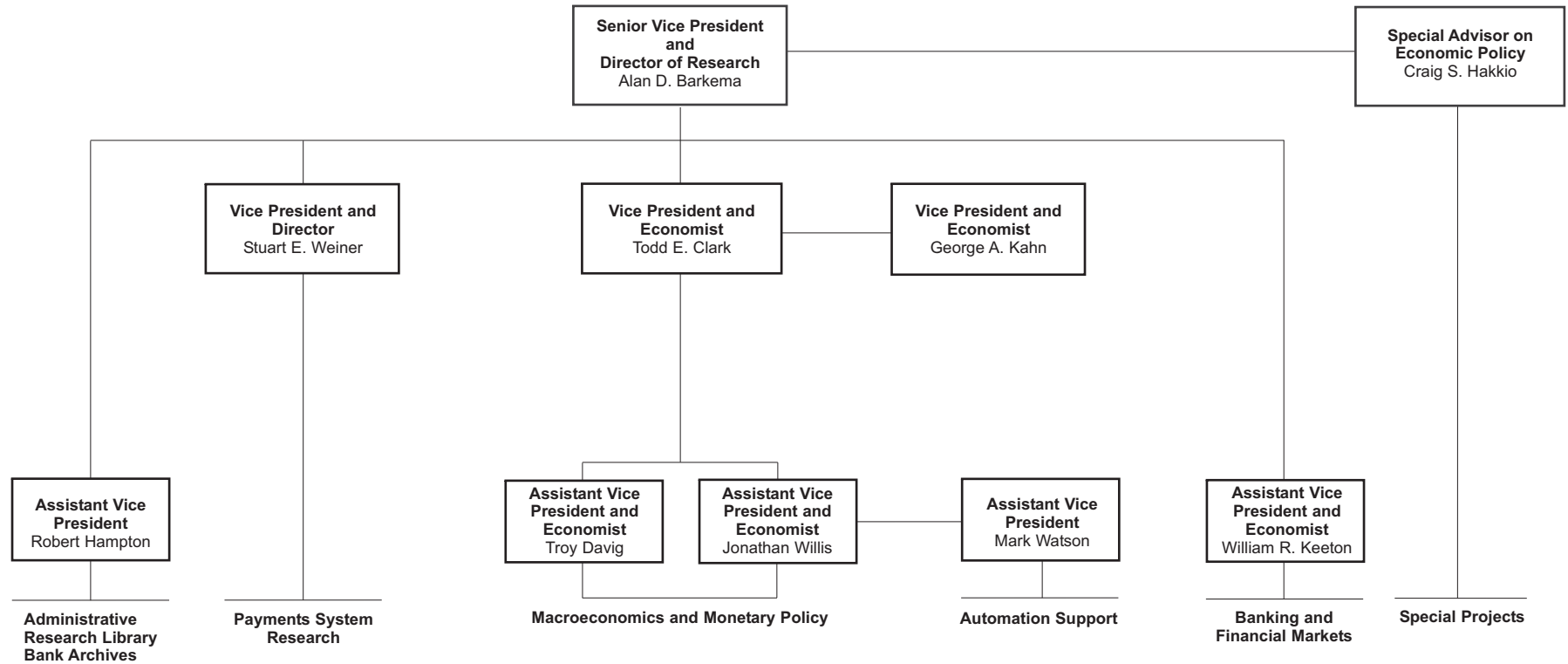
3 Also reports to Jon Jeswald, Federal Reserve IT, Federal Reserve Bank of Richmond.

Regional, Public, and Community Affairs Division

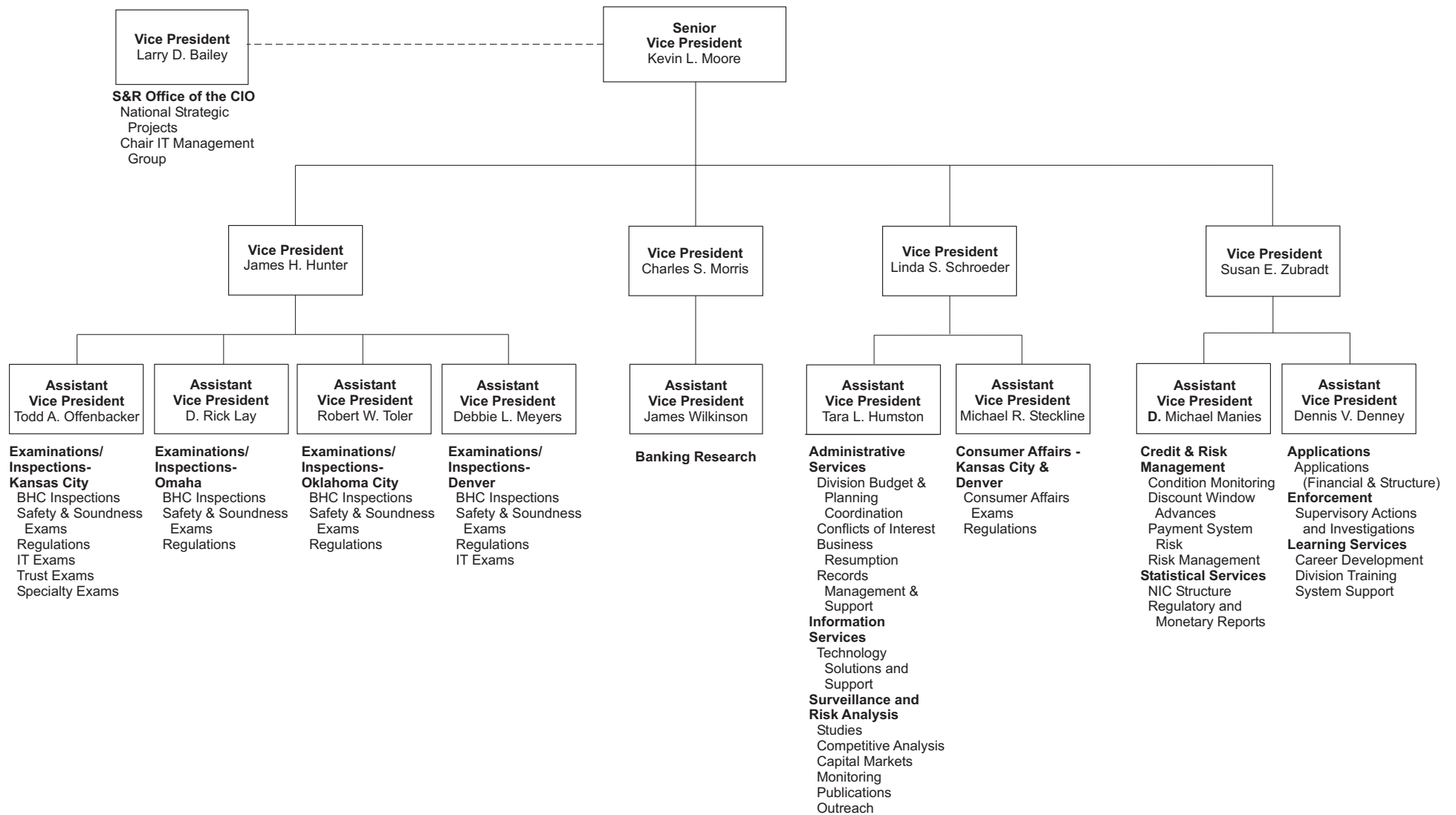


¹ Reports to Alan D. Barkema, Senior Vice President and Director of Research.

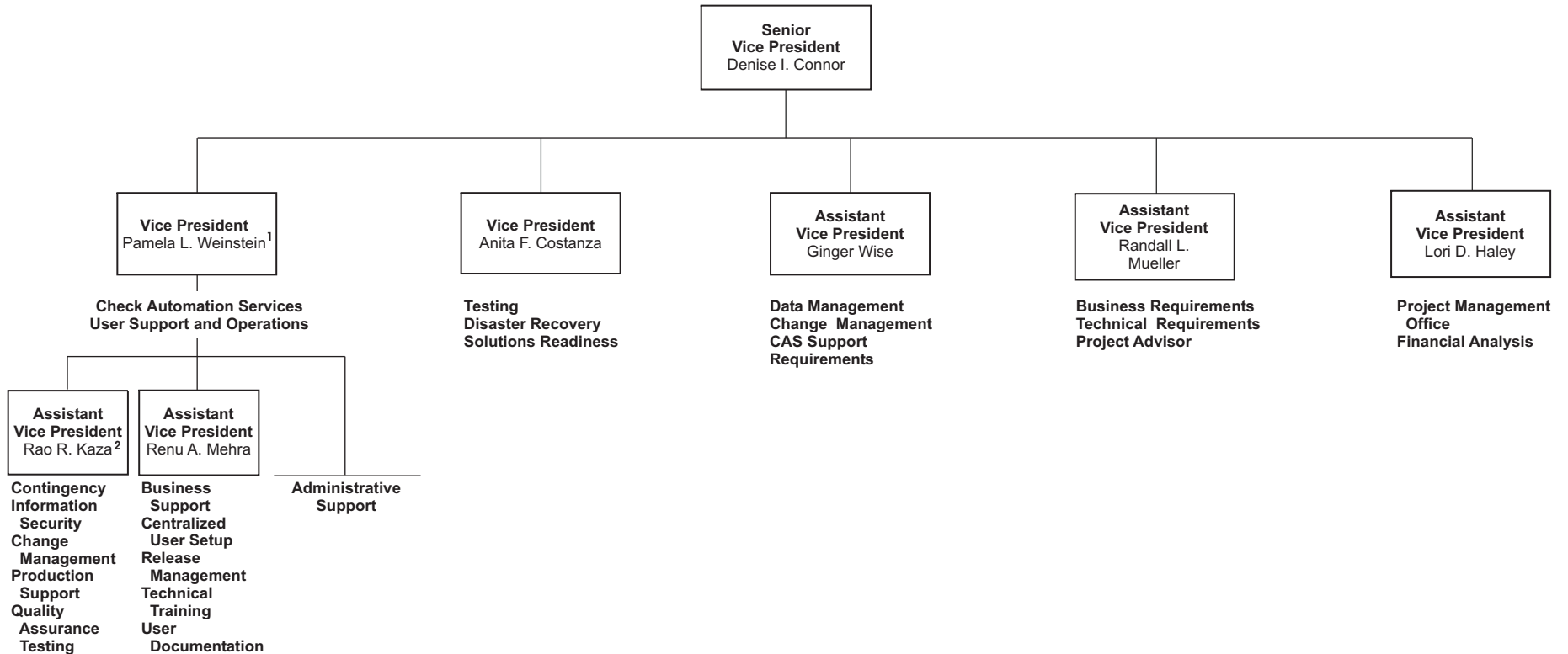
Economic Research Division



Supervision and Risk Management Division

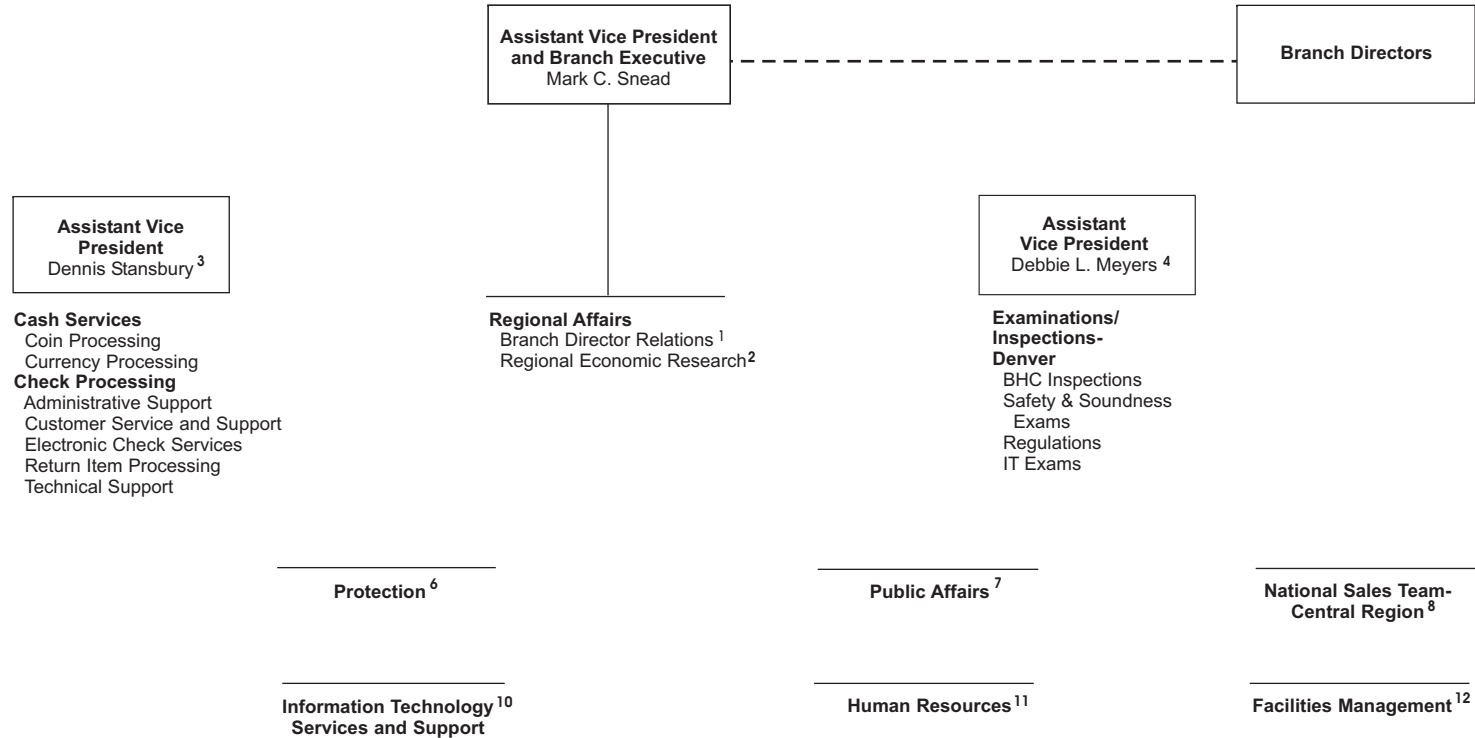


System Payments Director Project and Check Automation Services (CAS)



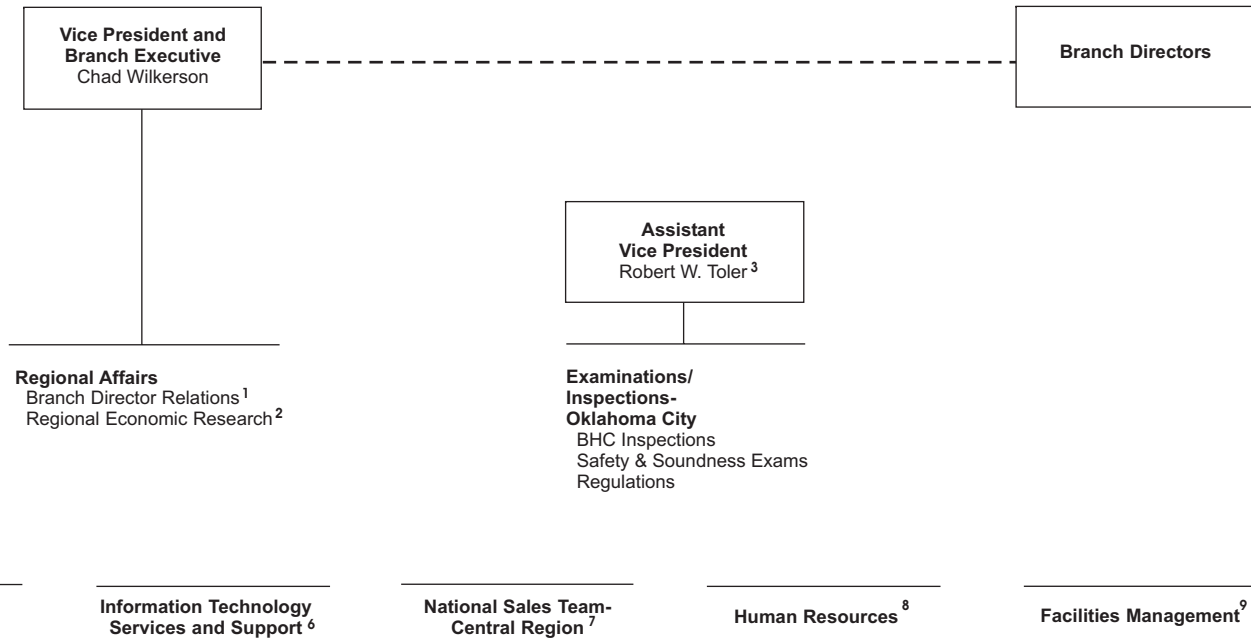
¹ Also reports to Scott Dake, Senior Vice President, Federal Reserve Bank of Atlanta, based at the Federal Reserve Bank of Minneapolis.
² Based at the Federal Reserve Bank of St. Louis.

Denver Branch



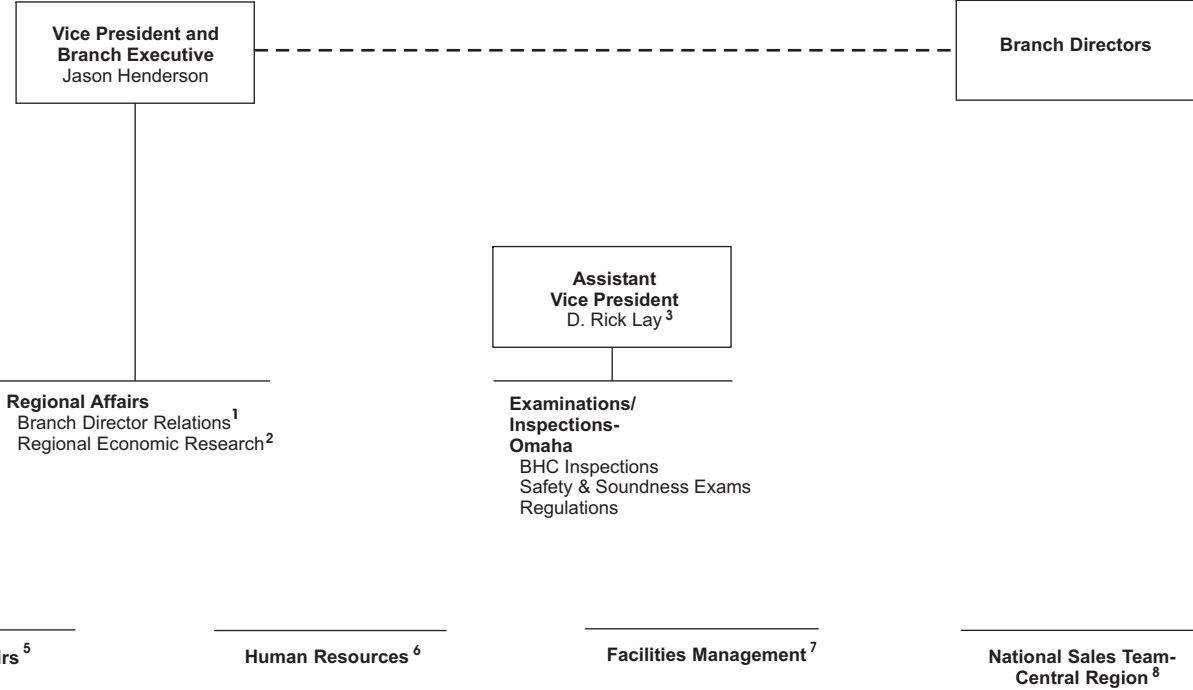
1 Reports to Diane Raley, Senior Vice President, Public Information Officer and Secretary.
 2 Reports to Alan D. Barkema, Senior Vice President and Director of Research.
 3 Reports to Annette Owens, Assistant Vice President.
 4 Reports to James H. Hunter, Vice President.
 5 Reports to Tammy Edwards, Assistant Vice President.
 6 Reports to Leesa M. Thompson, Assistant Vice President.
 7 Reports to Lowell C. Jones, Assistant Vice President.
 8 Reports to Korie Miller, Vice President.
 9 Reports to Michael Steckline, Assistant Vice President.
 10 Reports to Kris Hogan, Assistant Vice President.
 11 Reports to Donna J. Ward, Vice President.
 12 Reports to Mark Horan, Vice President.

Oklahoma City Branch



1 Reports to Diane Raley, Senior Vice President, Public Information Officer and Secretary.
 2 Reports to Alan D. Barkema, Senior Vice President and Director of Research.
 3 Reports to James H. Hunter, Vice President.
 4 Reports to Lowell C. Jones, Assistant Vice President.
 5 Reports to Tammy Edwards, Assistant Vice President.
 6 Reports to Kris Hogan, Assistant Vice President.
 7 Reports to Korie Miller, Vice President.
 8 Reports to Donna J. Ward, Vice President.
 9 Reports to Mark Horan, Vice President.

Omaha Branch



1 Reports to Diane Raley, Senior Vice President, Public Information Officer and Secretary.
 2 Reports to Alan D. Barkema, Senior Vice President and Director of Research.
 3 Reports to James H. Hunter, Vice President.
 4 Reports to Tammy Edwards, Assistant Vice President.
 5 Reports to Lowell C. Jones, Assistant Vice President.
 6 Reports to Donna J. Ward, Vice President.
 7 Reports to Mark Horan, Vice President.
 8 Reports to Korie Miller, Vice President.